

Maps of crop areas in 2000 and 2010 across England

Overview

This report provides maps of key agricultural activity across England, comparing spatial distributions in 2000 to 2010. Results are aggregated to 5km² level to give a good degree of resolution, whilst preserving the confidentiality of survey respondents.

Data limitations

The data are collected through the annual Defra June Survey of Agriculture of key agricultural activities (land areas, livestock numbers, labour force). In Census years (2000 and 2010), all farms in England were surveyed and responses were received from around 70% of farms. Estimates were made for the non-respondents and these maps are based on the combined dataset of actual responses and estimates.

Estimates are also made of the precise location of the land areas and livestock numbers so the values presented in these maps will not accurately reflect the actual activity in the 5km² grid square. They should be treated as a general picture for illustrative purposes only.

More detailed methodology of the June survey is available at

<http://www.defra.gov.uk/statistics/foodfarm/landuselivestock/junesurvey/junesurveyresults/>

Contents

	Years available	Page number	England areas ('000 ha)		% change 2010/2000
			2000	2010	
Wheat	2000 and 2010	2 - 3	1 957	1 792	-8%
Barley	2000 and 2010	4 - 5	752	586	-22%
Winter oilseed rape	2000 and 2010	6 - 7	265	582	+120%
Maize	2000 and 2010	8 - 9	98	146	+50%
Regional map of England		10			

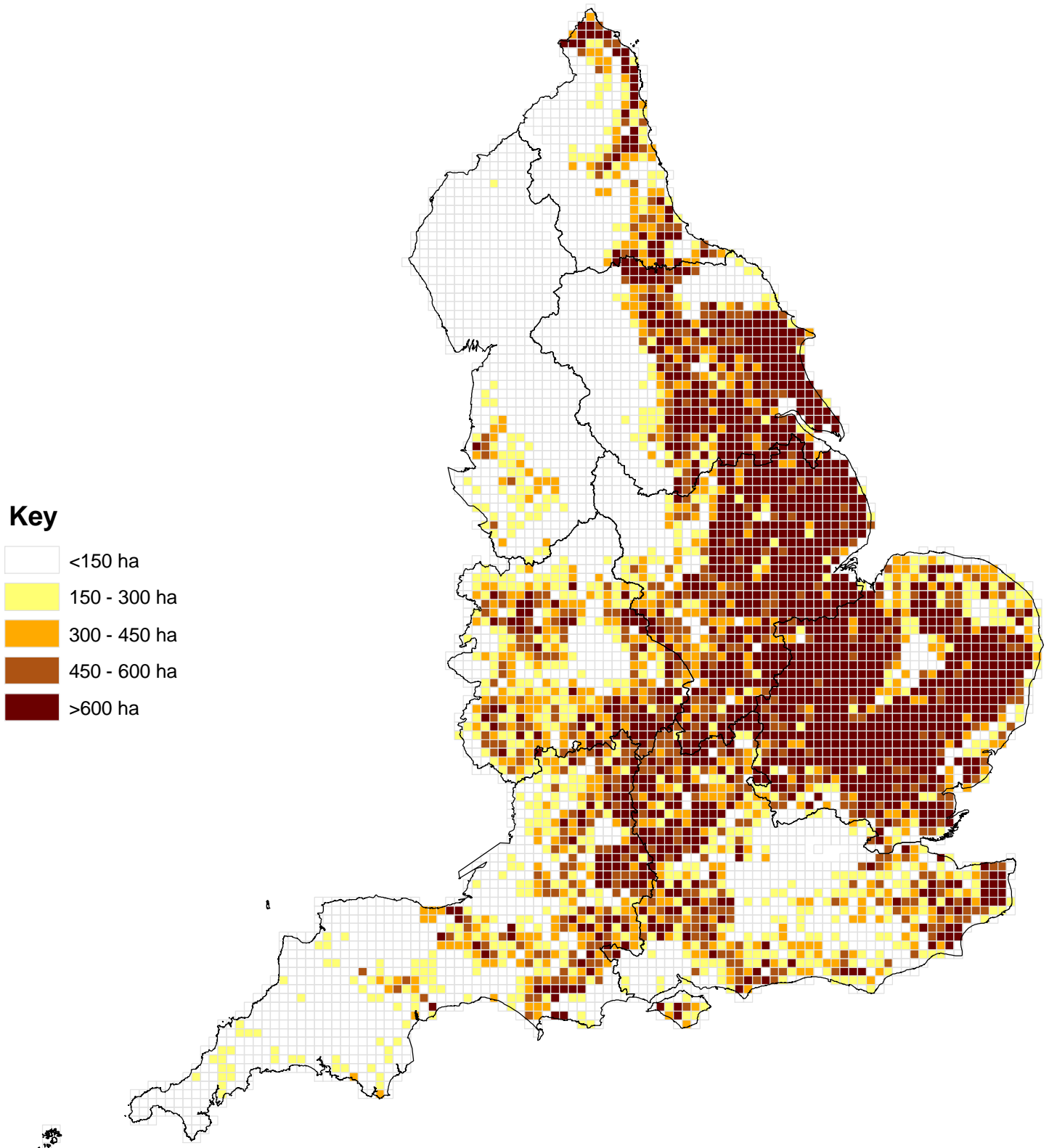
Further detailed statistics

Many other breakdowns of data from the June Survey of Agriculture can be found at

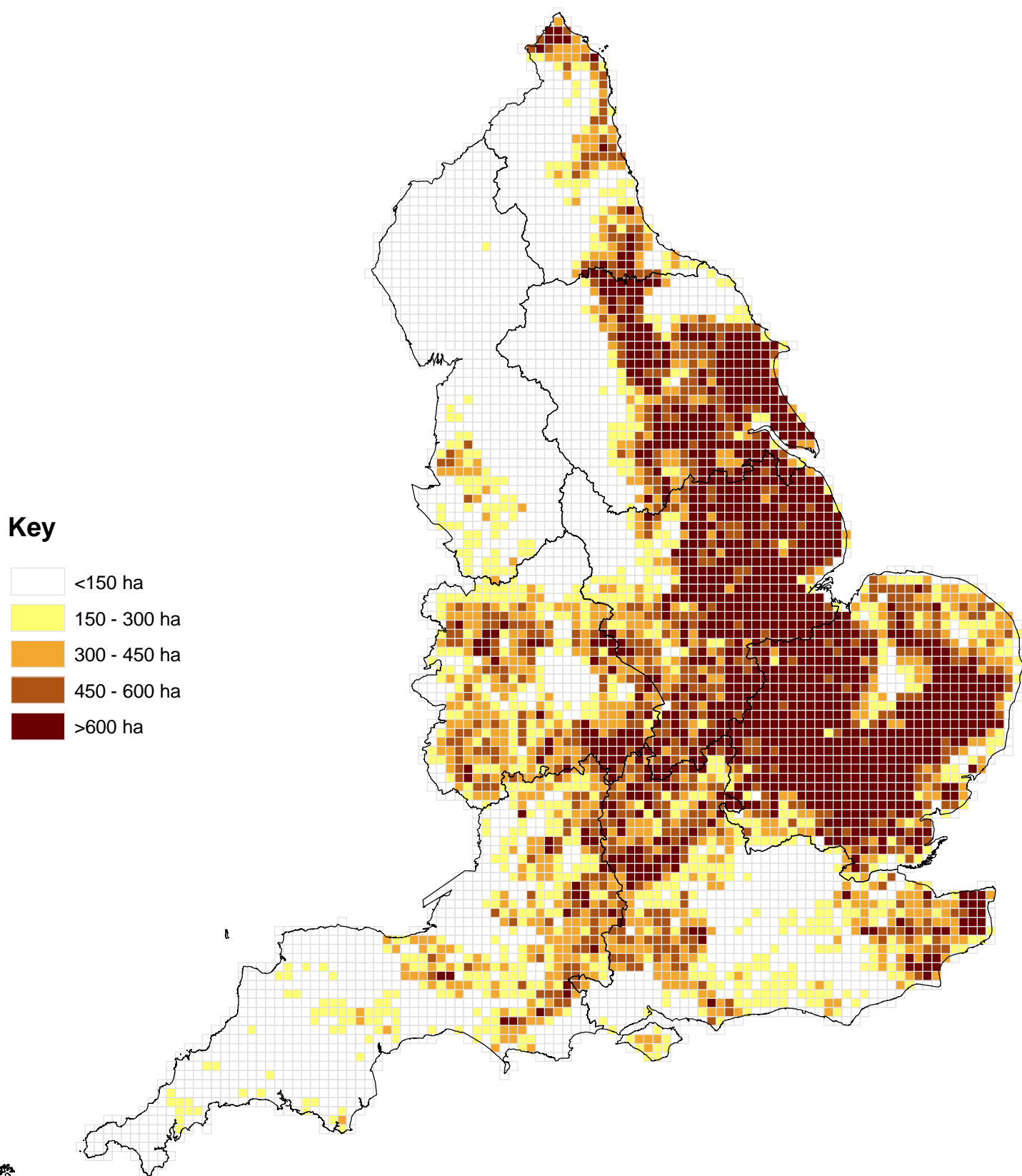
<http://www.defra.gov.uk/statistics/foodfarm/landuselivestock/junesurvey/junesurveyresults/>

Alternatively, for more information please e-mail: farming-statistics@defra.gsi.gov.uk or telephone: ++44 (0)1904 455332

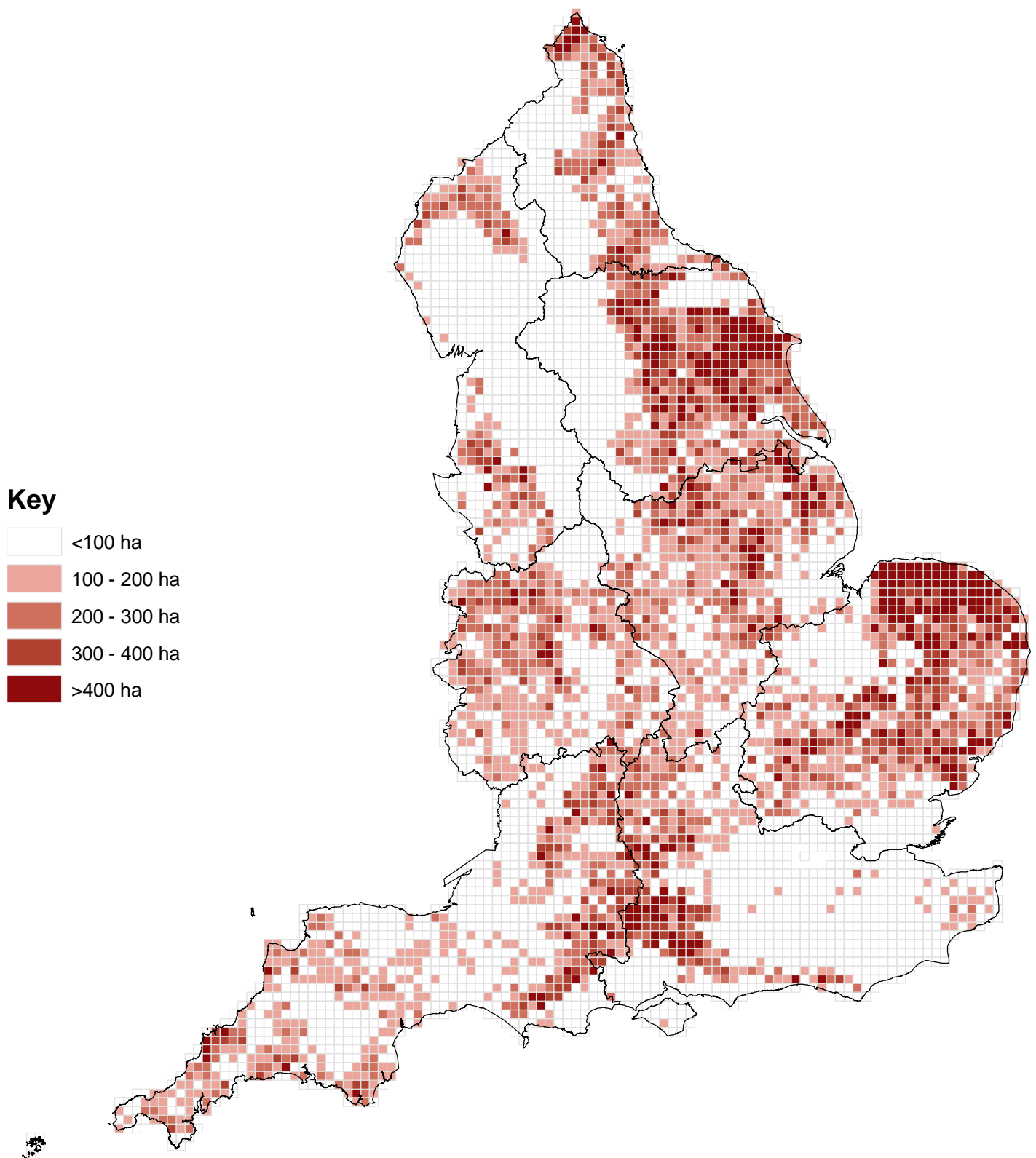
Area of wheat (hectares) by 5km² grid squares: England 2000



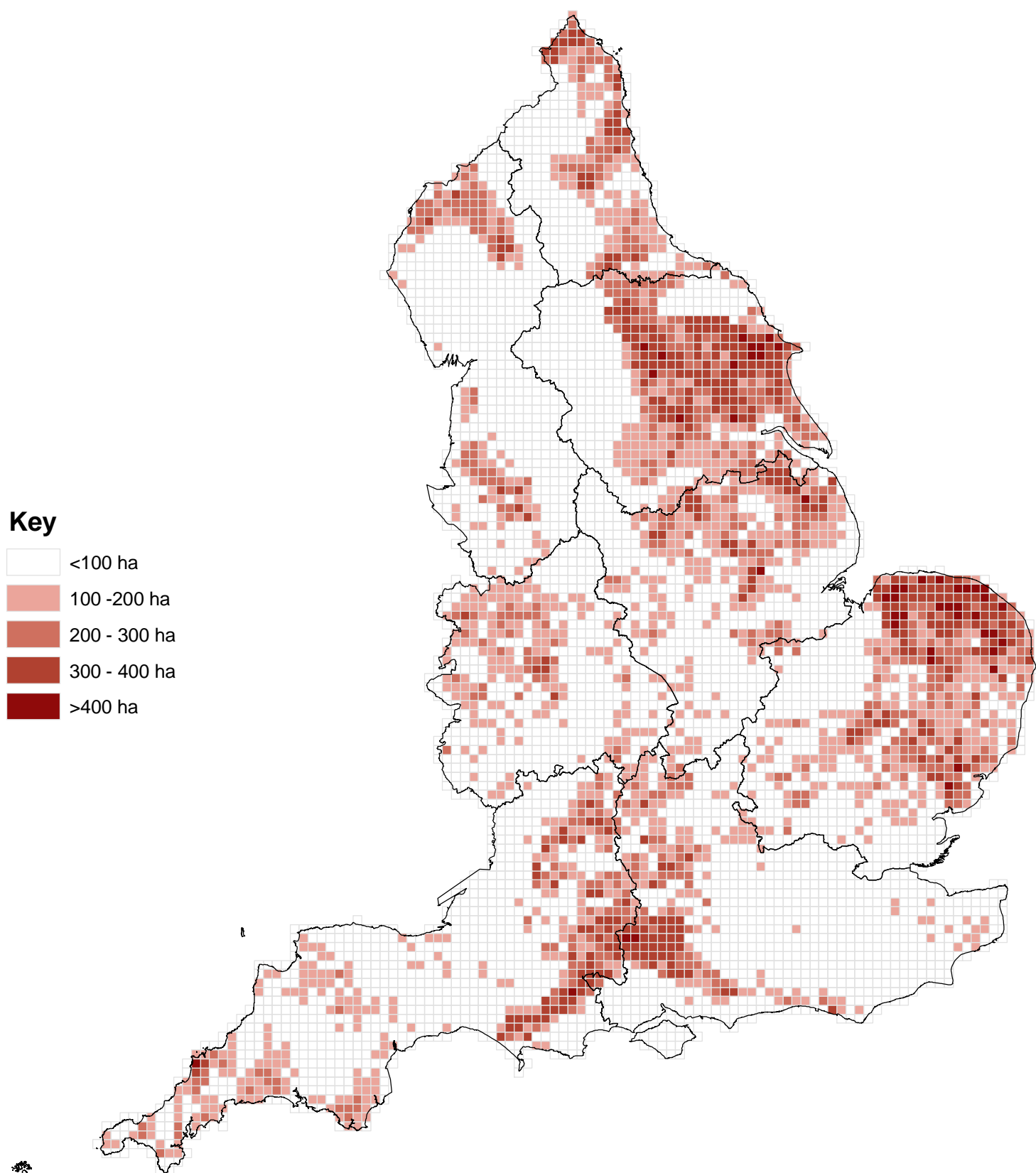
Area of wheat (hectares) by 5km² grid squares: England 2010



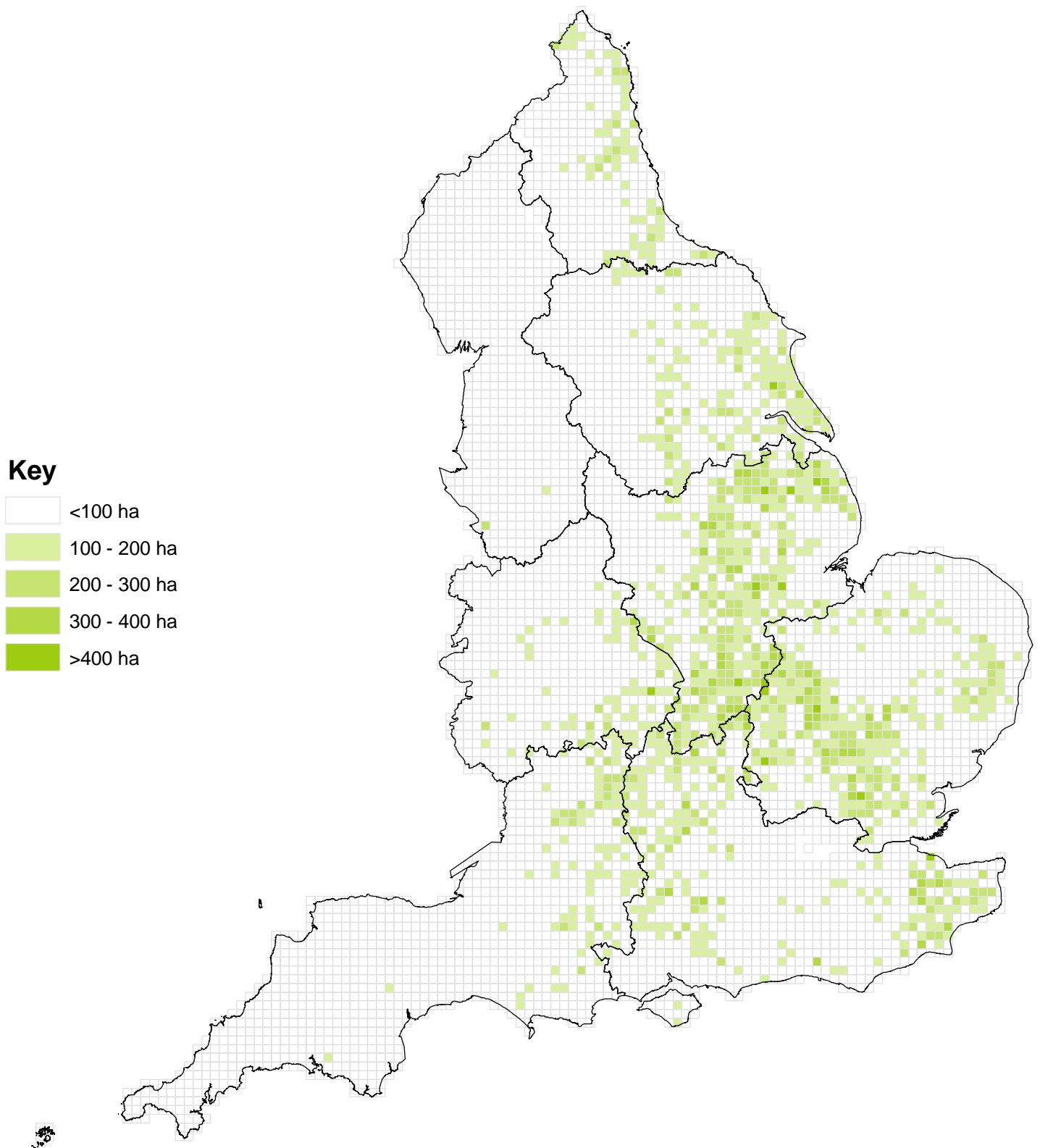
Area of barley (hectares) by 5km² grid squares: England 2000



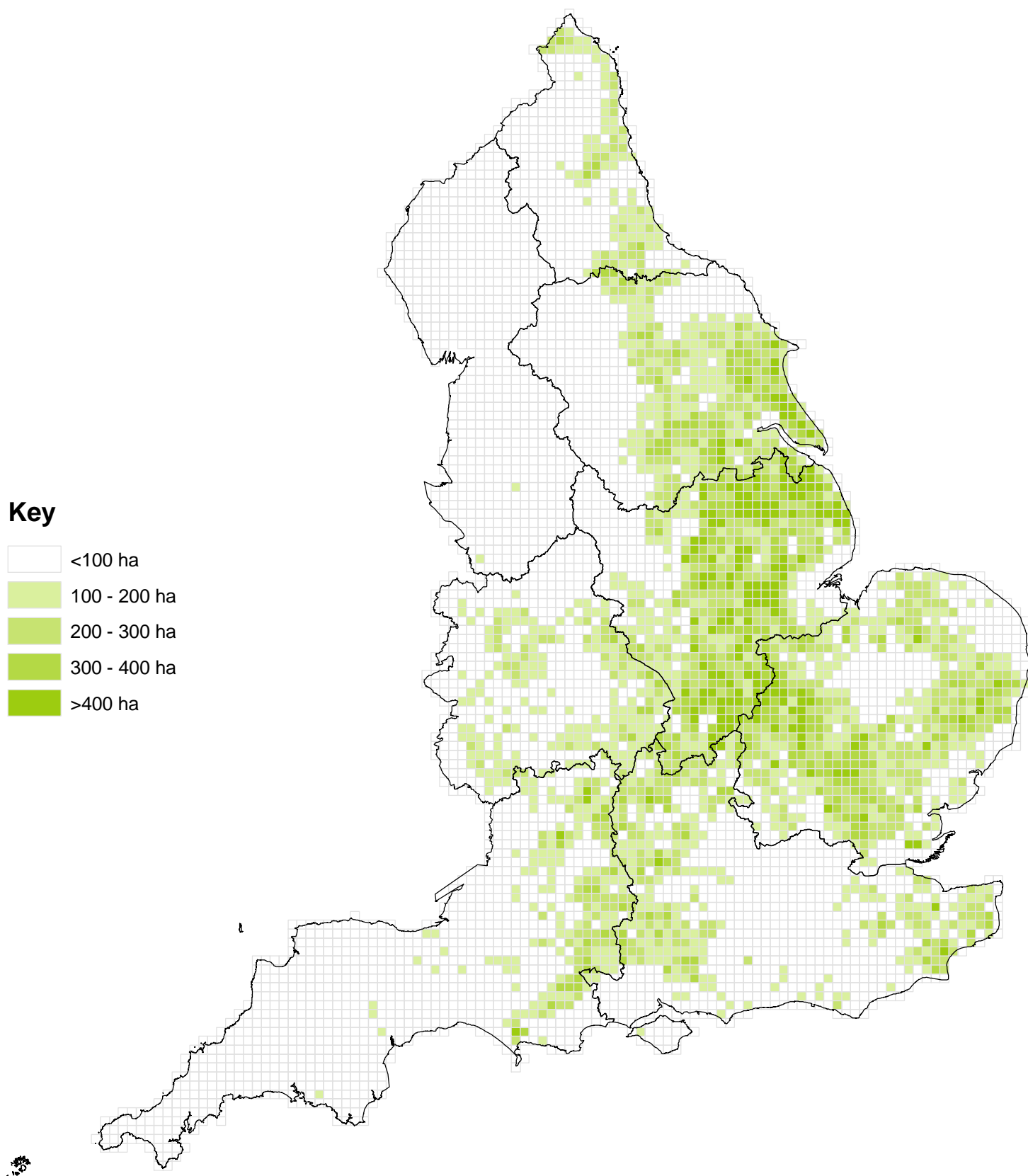
Area of barley (hectares) by 5km² grid squares: England 2010



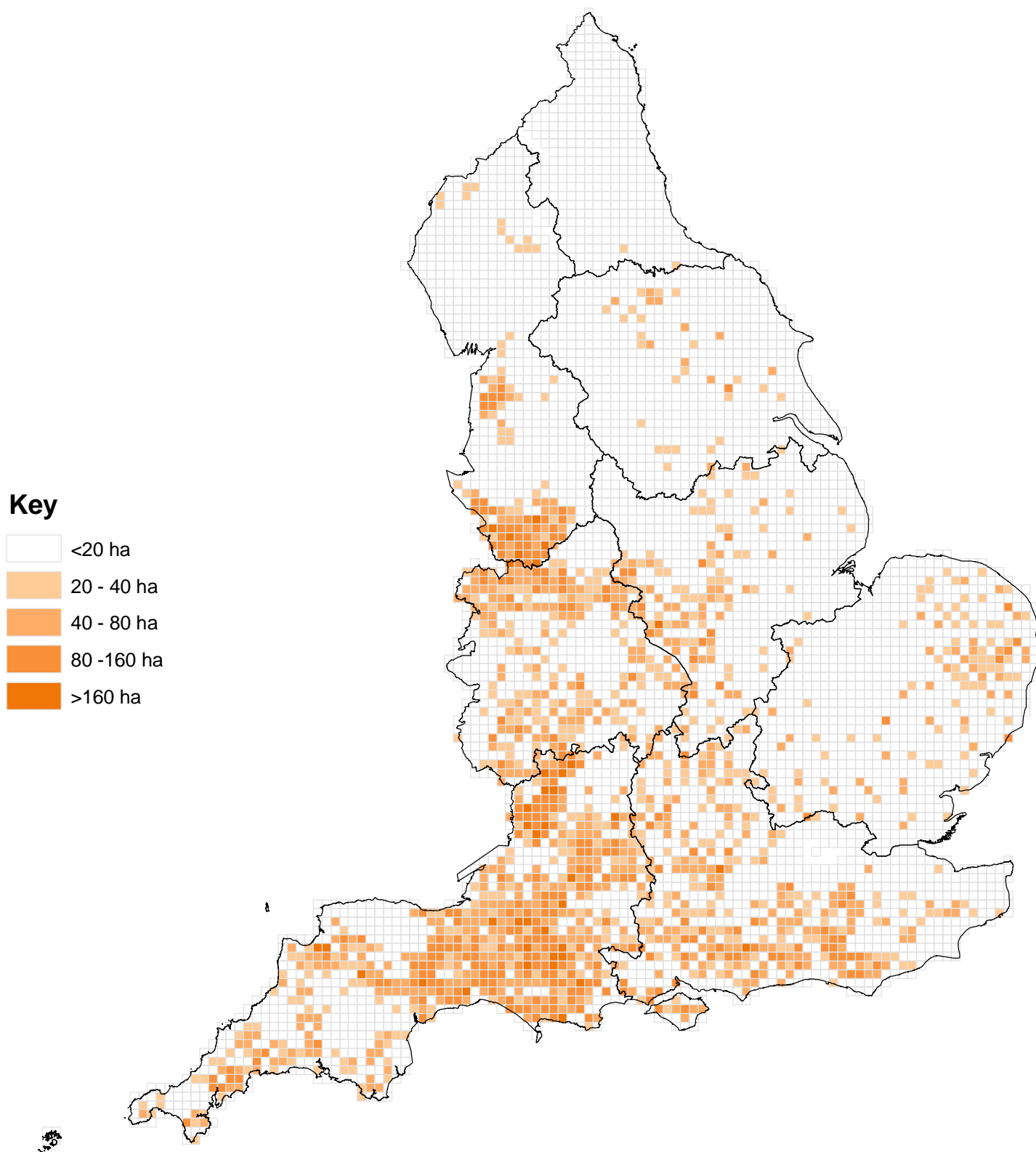
Area of winter oilseed rape (hectares) by 5km² grid squares: England 2000



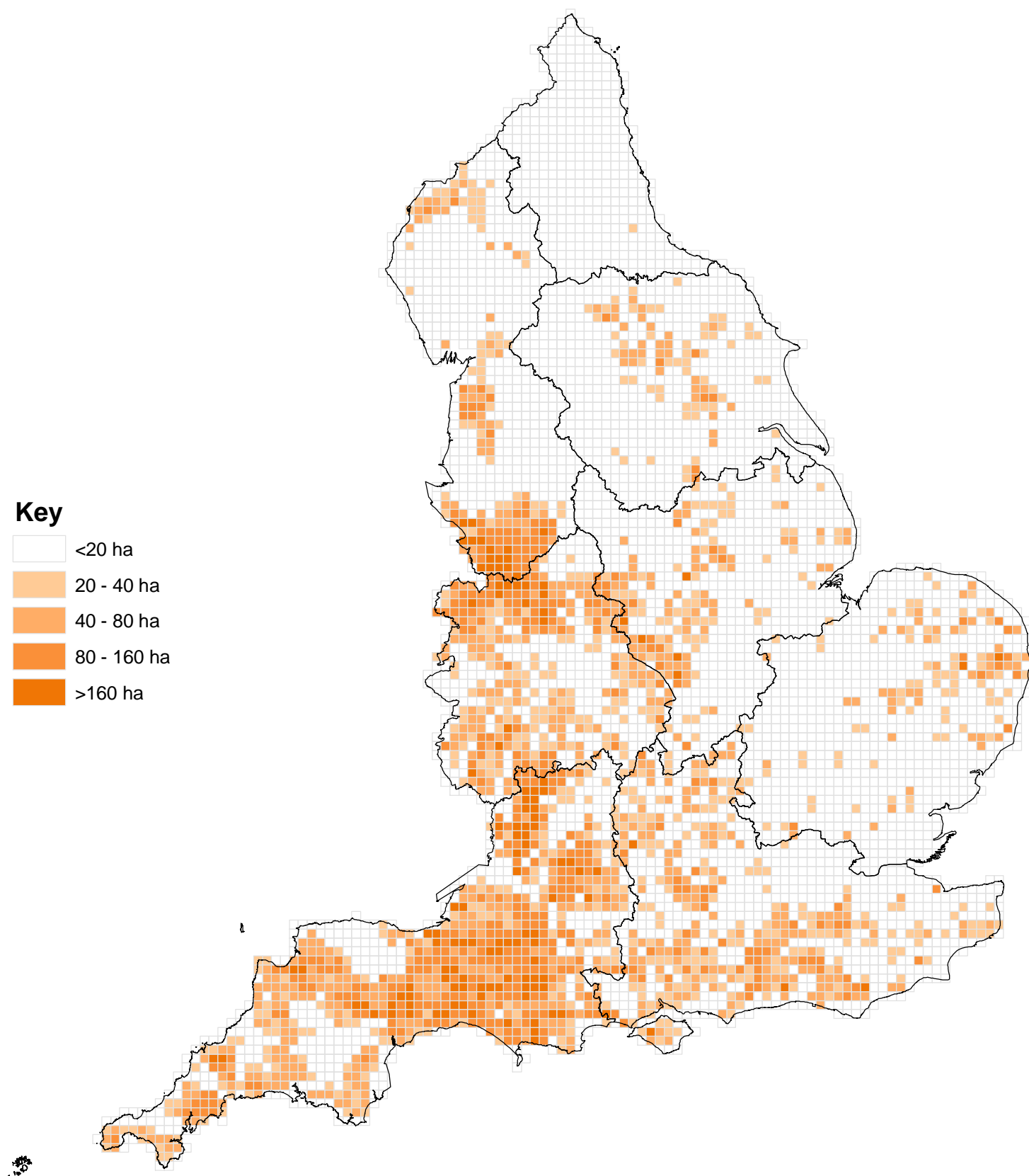
Area of winter oilseed rape (hectares) by 5km² grid squares: England 2010



Area of maize (hectares) by 5km² grid squares: England 2000



Area of maize (hectares) by 5km² grid squares: England 2010



Government Office Regions: England

