

26 July 2012

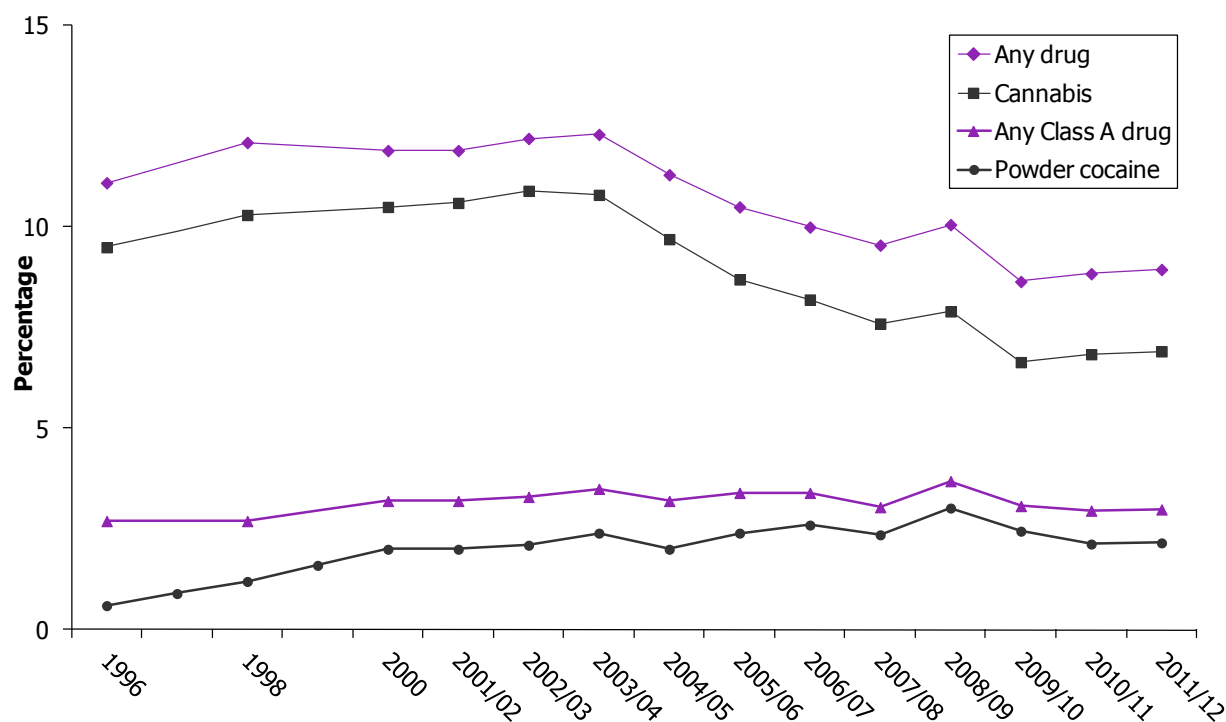
Statistical News Release: Drug Misuse Declared: Findings from the 2011/12 Crime Survey for England and Wales

The latest National Statistics on drug use in England and Wales are released today based on self reported data from the 2011/12 Crime Survey for England and Wales (CSEW).

Extent and trends in illicit drug use among adults aged 16 to 59

- In the 2011/12 CSEW, an estimated 8.9 per cent of adults (around three million) had used **an illicit drug** in the last year, similar to the 8.8 per cent from the 2010/11 survey.
- Around 3.0 per cent of 16 to 59 year olds (around one million people) had used a **Class A drug** in the last year, the same level as the 2010/11 survey.
- As in previous years, **cannabis** was the most commonly used type of drug in the last year (6.9% of adults, around 2.3 million people) followed by **powder cocaine** (2.2%, around 0.7 million).

Proportion of 16–59 year olds taking drugs in the last year (1996 to 2011/12 CSEW)



- From the 2011/12 CSEW, around 1.1 per cent of adults used **mephedrone** in the last year, down from 1.4 per cent in the 2010/11 survey.
- Drug use remains more prevalent among 16 to 24 year olds than older adults (see 'Extent and trends in illicit drug use among young people aged 16 to 24' section).

Other findings

- Frequency of use:
 - 3.3 per cent of adults aged 16 to 59 were defined as frequent drug users (having taken any illicit drug more than once a month on average in the last year). This is similar to the level recorded in the 2009/10 survey, the last time the question was asked.
 - Frequent drug use among young people aged 16 to 24 is more than twice as high (7.0%) as for adults overall.
- Use by age and lifestyle factors:
 - Any drug use was highest among 16 to 24 year olds (19.6% of 16 to 19 year olds and 19.0% of 20 to 24 year olds) with cannabis being the most commonly taken drug.
 - Class A drug use was highest among 20 to 29 year olds (7.2% of 20 to 24 year olds and 5.9% of 25 to 29 year olds).
 - Men continue to report higher levels of drug use than women; this has been the case since the 1996 survey.
 - Levels of drug use increased with increasing frequency of alcohol consumption or visits to nightclubs or pubs.

The full release contains sections:

- Extent and trends among adults aged 16 to 59
- Extent and trends among young people aged 16 to 24
- New CSEW measures of drug use
- Frequency of use
- Personal, household, area and lifestyle factors
- Onset and desistance among adults aged 16 to 59
- Accessibility of drugs

Notes to editors

1. 'Drug Misuse Declared: Findings from the 2011/12 Crime Survey for England and Wales' is available online via the UK National Statistics Publication Hub and the Home Office website.

<http://www.homeoffice.gov.uk/publications/science-research-statistics/research-statistics/crime-research/drugs-misuse-dec-1112/>

This annual release is being published in HTML format for the first time; during this transition a pdf document is provided which will enable users to print out all HTML pages from one source document (all tables are solely available online).

2. 'Smoking, drinking and drug use among young people in England 2011' is also being released on 26 July 2012, by the Health and Social Care Information Centre and is available via on their website as well as the UK National Statistics Publication Hub.

<http://www.ic.nhs.uk/pubs/sdd11fullreport>

3. A 'User Guide to Drug Misuse Declared' is also available, providing further information about the drug use measures.

<http://www.homeoffice.gov.uk/publications/science-research-statistics/research-statistics/crime-research/user-guide-drugs-misuse-dec>

4. The Crime Survey for England and Wales was formerly the British Crime Survey. The name of the survey was changed to better reflect the coverage of the survey.

5. While responsibility for the Crime Survey for England and Wales transferred to the Office for National Statistics on 1 April 2012, the Home Office has retained responsibility for analysis and publication of this Drugs Misuse Declared publication.

For all press enquiries, please contact the Home Office Press Office who will liaise with Home Office Statistics Unit:

Newsdesk - **020 7035 3535**

Monday - Thursday: 07:00 – 21:00

Friday: 07:00 – 20:00

Emergency media calls, out-of-hours: **07659 174 240**

Please note: the press office deals with enquiries from the media only. Members of the public should phone **020 7035 4848**.