

# Arts Council of Wales Lottery Distribution Account 2013-14

HC 411

£10.00



# Arts Council of Wales Lottery Distribution Account 2013-14

Presented to Parliament pursuant to Section 35(5) of the National Lottery etc. Act 1993  
(as amended by the National Lottery Act 1998)

Ordered by the House of Commons to be printed on 22 July 2014

HC 411

22 July 2014  
£10.00

# Contents

## Annual Report:

Trustees' Annual Report	2
Strategic Report	12
Environmental Report	30
Remuneration Report	34
Statement of Council's and the Accounting Officer's responsibilities	39
Annual Governance Statement	40
The Certificate and Report of the Comptroller and Auditor General to the Houses of Parliament and the Members of the National Assembly for Wales	47

## Financial Statements:

Statement of Comprehensive Net Expenditure	49
Statement of Financial Position	50
Statement of Cash Flows	51
Statement of Changes in Equity	51
Notes forming part of the Financial Statements	52

## Annexes to the Annual Report (not forming part of the financial statements):

National Lottery Policy Directions	64
Grants Offered	66

he National Audit Office scrutinises public spending for Parliament  
and is independent of government.

The Comptroller and Auditor General, (C&AG), Sir Amyas Morse  
is an Officer of the House of Commons and leads the NAO, which employs some 820 employees.

The C&AG certifies the accounts of all government departments  
and many other public sector bodies.

He has statutory authority to examine and report to Parliament  
on whether departments and the bodies they fund  
have used their resources efficiently, effectively and with economy.

Our studies evaluate the value for money of public spending, nationally and locally.  
Our recommendations and reports on good practice help government improve public services,  
and our work led to audited savings of almost £1.1 billion in 2013.

© Crown copyright 2014

You may re-use this information (excluding logos)  
free of charge in any format or medium,  
under the terms of the Open Government Licence v.2.

To view this licence, visit  
<http://www.nationalarchives.gov.uk/doc/open-government-licence/>  
or email [psi@nationalarchives.gsi.gov.uk](mailto:psi@nationalarchives.gsi.gov.uk).

This publication is available at [www.gov.uk/government/publications](http://www.gov.uk/government/publications)

ISBN: 9781910305126

Printed on paper containing recycled fibre content minimum

# Annual Report for the year ended 31 March 2014

## Trustees' Annual Report

### Reference and administrative details

#### Trustees

Council Members who served since 1 April 2013 were:

		Attendance at meetings during 2013-14			
		Council	Audit Committee	Capital Committee	Remuneration Committee <sup>1</sup>
		Number of meetings held:			
		6	5	5	0
Professor Dai Smith, Chairman	c	6			Committee Chair n/a
Dr Kate Woodward, Vice-chairman	d	3			
Emma Evans (to 31 March 2014)	a	5	Committee Chair (to March 2014) 5		
Dr John Geraint	a c	4.5	Committee Chair (from April 2014) 1/1		n/a
Michael Griffiths OBE	a	4.5	3.5		
Melanie Hawthorne		5			
Dr Lesley Hodgson	a	3.5	0/1		
Margaret Jervis MBE DL	c v	4.5			n/a
Marian Wyn Jones	i iii	4			
Andrew Miller		6			
Osi Rhys Osmond	d	5			
Richard Turner	ii iv	5			
Alan Watkin	a	6	(to December 2013) 3/4	5	
Professor Gerwyn Williams	b	3		Committee Chair 5	

<b>Attendance at meetings during 2013-14</b>					
		<b>Council</b>	<b>Audit Committee</b>	<b>Capital Committee</b>	<b>Remuneration Committee<sup>1</sup></b>
<b>Number of meetings held:</b>					
		6	5	5	0
John C Williams	a b	6	(to December 2013) 4/4	2	
<b>Attendance of independent Committee members:</b>					
Gareth Jones	a		5		
Phillip Westwood	a		4		
Jonathan Adams (to October 2013)	b			2/3	
Mark Davies	b			4	
Roland Wyn Evans	b			4	
Alan Hewson (appointed March 2014)	b			1/1	
Janet Roberts (to October 2013)	b			1/3	

1 In the absence of guidance from the Welsh Government in respect of the Chair's remuneration and Chief Executive's salary, the Remuneration Committee did not meet during 2013-14.

- a Member of Audit Committee
- b Member of Capital Committee
- c Member of Remuneration Committee
- d Member of Wales at the Venice Biennale of Art Committee

For at least part of the period covered by this report Council members (identified by the number in brackets after their name in the above list) also served as Members or senior employees of the following public bodies:

- i Betsi Cadwaladr Health Board
- ii Monmouthshire County Council
- iii S4C
- iv University of Wales
- v Wales Council for Voluntary Action

*Chief Executive*

Nicholas Capaldi

## Offices

Mid and West Wales region:  
The Mount  
18 Queen Street  
Carmarthen  
SA31 1JT

North Wales region:  
Princes Park II  
Princes Drive  
Colwyn Bay  
LL29 8PL

South Wales region  
and national office:  
Bute Place  
Cardiff  
CF10 5AL

### *Auditor*

Comptroller and Auditor General  
157-197 Buckingham Palace Road  
London  
SW1W 9SP

### *Solicitors*

Geldards LLP  
Dumfries House  
Dumfries Place  
Cardiff  
CF10 3ZF

### *Internal auditors*

Deloitte LLP  
5 Callaghan Square  
Cardiff  
CF10 5BT

### *Bankers*

The Co-operative Bank  
16-17 High Street  
Cardiff  
CF10 1AX

## Structure, governance and management

The Council is a Welsh Government sponsored body. The Council's lottery distribution activities are not a devolved function so these financial statements are, therefore, laid before both Parliament and the National Assembly for Wales, and are audited by the Comptroller and Auditor General under section 35 of the National Lottery etc. Act 1993 (as amended).

The Welsh Ministers appoint the Members of the Arts Council who normally serve for a period of three years and may be re-appointed for a further three year period. During the period under review the Council met six times.

### **Members' induction and training**

New Members undergo an induction programme to brief them on their legal obligations under the Royal Charter and charity law, the Code of Best Practice, the Committee and decision making processes, strategic plans and funding issues. During the induction day they receive presentations from the Chairman, Chief Executive and Director of Finance and Resources. Members also have the opportunity to meet key employees. As well as the Royal Charter and Code of Best Practice, Members are provided with copies of the most recent Annual Report and Accounts, the current Working Budget, and the Charity Commission's publications 'The Essential Trustee' and 'The Independence of Charities from the State'. Seminars and additional training are arranged as necessary to inform the formulation of strategies and policies.

Council Members reserve to themselves matters such as decisions of policy, the Corporate and Operational Plans, the setting of the annual budget, the annual allocation of grants to revenue-funded organisations, and major alterations to the terms and conditions of service for staff.

Details of the Council's structure, accountability, internal control framework and risk management arrangements are set out in the Annual Governance Statement, later in this Report.

The Council is required to account separately for its general and lottery distribution activities. Under separate Accounts Directions the accounting treatment of general and lottery grants differs significantly so, with due regard to paragraph 359 of the Charity Commission's Statement of Recommended Practice (revised 2005), in the judgment of the Trustees the production of a consolidated account is inappropriate as it would not provide a true and fair view of the application of the Council's resources.



## Lottery distribution

The National Lottery etc. Act 1993 (as amended) set up the National Lottery ('Lottery') in order to raise funds to support good causes in the 'arts, sport, national heritage projects, charitable projects, and projects to mark the millennium'. The Council is one of the bodies responsible for the distribution of these funds.

Under the National Lottery etc. Act 1993 (as amended) the Council is required to prepare a statement of account for its lottery distribution activities in the form and on the basis determined by the Secretary of State for Culture, Media and Sport. The National Lottery Accounts Direction requires that all costs properly attributable to National Lottery activities should be funded from Lottery income. The Council is required to account separately for its general activities.

The Capital Committee advises Council in the development of policy on capital development and makes recommendations about individual capital grant applications. Independent external assessors were employed to advise on all Lottery capital applications for £100,000 or more. Council takes the final decisions concerning the award of Capital grants over £250,000.

The Council has delegated Lottery funding to a number of organisations:

- to Ffilm Cymru Wales (formerly known as the Film Agency for Wales) – for film;
- to Nesta – for digital research and development projects;
- to BBC Cymru Wales (from October 2013) – for the Horizons/Gorwelion scheme, to support emerging contemporary music artists (no funding was advanced during 2013-14); and
- to Literature Wales (from April 2014) – for writers' bursaries.

The terms of the external delegations are set out in formal agreements and satisfy the conditions of the Council's Statement of Financial Requirements.

## Human resources

### Equal opportunities

The Council is committed to a policy of equality of opportunity in its employment practices. In particular, the Council aims to ensure that no potential or actual employee receives more or less favourable treatment on the grounds of age, disability, ethnic or national origin, gender, marital or parental status, nationality, political belief, race, religion, or sexual orientation.

The Council is on the National Register of Disability Symbol Users, reflecting its commitment to ensure that appropriate facilities are available for disabled employees.

### Sickness absence

During 2013-14 staff sickness absence totalled 587 days (2012-13: 364 days). This represented 2.98 per cent (2012-13: 1.97 per cent) based on 260 working days, including 1.67 per cent (2012-13: 0.16 per cent) as a result of long term absence (over 28 days).

### Employee communication

The Council recognises the trade union Unite, with which it has established a procedural agreement; representatives of management and union meet regularly to discuss matters of current concern. Additionally, regular departmental meetings are held and Directors are required to report to their staff on matters discussed at Council and at the Senior Management Team meetings.

## Pension scheme

Most employees are members of the Arts Council Retirement Plan 1994. The fund is a defined benefit scheme. It is also a multi-employer scheme so the Council is unable to identify its share of the underlying assets and liabilities. In accordance with the Council's accounting policies, the scheme has therefore been accounted for as if it were a defined contribution scheme, in accordance with IAS 19.

The Council also introduced a defined contribution scheme, The People's Pension, as an alternative option to meet the needs of Auto Enrolment legislation. The small number of eligible employees that were not members of the ACRP were auto-enrolled into the defined contribution scheme as of 1 May 2014, the Council's official staging date. The scheme is accounted for in accordance with IAS 19.

## Payment of trade and other payables

Under the Late Payment of Commercial Debts (Interest) Act 1998, and the UK Government's Better Payment Practice Code, the Council is required to pay suppliers' invoices not in dispute within 30 days of receipt of goods or services or valid invoice, whichever is the later.

The Council aims to pay 100 per cent of invoices, including disputed invoices once the dispute has been settled, in line with these terms. During the year ended 31 March 2014, the Council paid 95 per cent (2012-13: 94 per cent) of all invoices within the terms of its payment policy. Since November 2008 the Council, in line with Welsh Government policy, aims to pay invoices within 10 days. For 2013-14 85 per cent (2012-13: 72 per cent) of invoices have been paid within 10 days. It is not anticipated that our policy will alter in future years.

## Financial risk and capital management

The Council mainly holds financial instruments to finance its operations, for example trade and other receivables and trade and other payables, and cash and cash equivalents arising directly from its operations. The financial risk management of exposures arising from trading financial instruments, primarily trade and other receivables and trade and other payables, is through a series of policies and procedures. These risks are managed as follows:

**Liquidity risk** – The Council does not consider that its Lottery Distribution function is exposed to any significant liquidity risks, and is satisfied that the balance within the National Lottery Distribution Fund and projected future Lottery proceeds are sufficient to meet its hard commitments.

**Interest rate risk** – Cash and cash equivalents balances, which are drawn down from the National Lottery to pay grant commitments and operating costs, are held in instant access variable rate bank accounts which on average carried an interest rate of 0.38 per cent (2012-13: 0.56 per cent) in the year. Surplus daily funds invested in the Public Sector Deposit Fund on average carried an investment return of 0.34 per cent in the year (2012-13: n/a). The year-end cash and cash equivalents balance held by the Council was £1,308,000 (2013: £1,739,000). The Council does not consider that its Lottery Distribution function is exposed to significant interest rate risks.

**Foreign currency risk** – The Council is not exposed to any significant foreign exchange risks.

**Cash and cash equivalents flow risk** – The Council is not exposed to any significant cash and cash equivalents flow risks.

## Personal data related incidents

The Council has controls and policies in place to ensure data integrity. IT systems ensure that the physical security of data is tightly controlled. As far as we are aware, no loss of data occurred during the period under review.

## Audit

So far as the Accounting Officer is aware, there is no relevant audit information of which the Council's auditor is unaware, and he has taken all the steps that he ought to have taken as Accounting Officer in order to make himself aware of any relevant audit information and to establish that the Council's auditor is aware of that information.

## Plans for future periods

Our priorities for 2014-15 are set out in the following table:

Goals for 2018	Targets for 2014-15
<p><b>Creating the environment for the arts to flourish</b></p>	
<p><b>What are we trying to achieve?</b></p>	
<p>We want to see our best artists and organisations able to create their best work and to sustain themselves through the quality of their activities. Priorities will be our investment in our revenue funded (RFO) portfolio, support for the individual artist and festivals and major events that significantly raise the profile of the arts.</p>	
<ul style="list-style-type: none"> <li>■ Arts Council revenue funding for RFO portfolio has decreased as a percentage of total income by 10 percentage points</li> <li>■ 75 per cent of the RFO portfolio is designated as 'low risk'</li> <li>■ 25 per cent increase in average annual earnings of individual artists</li> <li>■ completion of Council's five year Capital strategy</li> </ul>	<ul style="list-style-type: none"> <li>■ Delivery of 5 modules in RFO Development Programme (Pension auto-enrolment; Access; Governance; Finance; Apprenticeships and Internships)</li> <li>■ Introduction of Sustainability and Resilience scheme</li> <li>■ Action plan for implementation Support for Individual Artists report</li> <li>■ Completion of Pontio capital project</li> <li>■ At least 4 Artist Residencies established</li> <li>■ Delivery of Dylan Thomas 100 Festival</li> <li>■ Terms of Reference for next Investment Review agreed</li> </ul>

Goals for 2018	Targets for 2014-15
<p><b>Increasing the value of international cultural exchange to the arts in Wales</b></p>	
<p><b>What are we trying to achieve?</b></p> <p>We want to enable leading artists and arts organisations in Wales to realise their international ambitions by expanding horizons, encouraging potential and connecting with inspiring partners and markets. In an increasingly globalised world we want the arts in Wales to be able to operate effectively in the global market place.</p>	
<ul style="list-style-type: none"> <li>■ International Opportunities Fund (IOF) leverages a 3:1 return on investment</li> <li>■ 10 artists from Wales showcased in at least 5 international events under the "Wales in..." brand</li> <li>■ 2 major international arts events secured and hosted in Wales</li> <li>■ Participation in at least 2 European funded transnational projects</li> <li>■ Increased audience numbers for Cymru yn Fenis/ Wales in Venice 2015 and 2017</li> <li>■ Artists featuring in/leading on 2 Welsh Government international delegations a year</li> </ul>	<ul style="list-style-type: none"> <li>■ Delivery of International Opportunities Fund</li> <li>■ New partnership agreement with British Council</li> <li>■ Engagement agreed with Wales' Creative Europe Desk</li> <li>■ Publication of WOMEX 2013 evaluation</li> <li>■ Strategy agreed for Patagonia 2015</li> <li>■ Wales artists represented at 1 major showcase/ network event</li> <li>■ At least 1 project delivered in partnership with Welsh Government</li> </ul>
<p><b>Finding new opportunities, ways and places for people to enjoy and take part in the arts</b></p>	
<p><b>What are we trying to achieve?</b></p> <p>We want to encourage as many people as possible in Wales to enjoy and take part in the arts. It's not just about defending and protecting what already exists. We want to see the arts activities that we support reaching out to a wider cross section of the population of Wales – in new ways and in new places – to people who've previously experienced barriers to attending and taking part in the arts.</p>	
<ul style="list-style-type: none"> <li>■ A 5 percentage point increase in attendance and participation amongst C2, D and E social group categories</li> <li>■ A 5 per cent increase in funding to the 10 local authorities currently receiving the lowest level of per capita Lottery funding</li> <li>■ 10 per cent increase in audiences for Arts Council funded National Touring projects</li> </ul>	<ul style="list-style-type: none"> <li>■ Delivery of at least 3 Creative Steps, 3 Our Space and 3 Ideas: People: Places exemplar projects</li> <li>■ At least 2 Welsh commissions for The Space</li> <li>■ Implementation of Disability Ticketing Scheme</li> <li>■ Delivery of 2nd year of Family Arts Programme</li> <li>■ 580 Night Out events, of which at least 130 are in Communities First areas</li> <li>■ Partnership projects established with Diverse Cymru and Voluntary Arts Wales</li> </ul>

Goals for 2018	Targets for 2014-15
<p><b>Developing the creativity of children and young people</b></p> <p><b>What are we trying to achieve?</b></p> <p>We want to see more children and young people across Wales actively involved in high quality creative activity. Whatever the circumstances that they face, we want all young people to have the opportunity to develop their talents (including to an advanced level of attainment).</p> <p>A key priority will be working with the Welsh Government on the implementation of the Arts &amp; Education Review.</p>	
<ul style="list-style-type: none"> <li>■ 5 per cent increase in the number of children and young people in our most deprived communities who are attending or participating in the arts</li> <li>■ Publication of evidence demonstrating involvement in creative activity and a rise in levels of educational attainment</li> </ul>	<ul style="list-style-type: none"> <li>■ Establishment of Momentum programme</li> <li>■ Agreement with Welsh Government on action plan for implementation of Arts &amp; Education Review</li> </ul>
<p><b>Encouraging innovation, resilience and sustainability</b></p> <p><b>What are we trying to achieve?</b></p> <p>We want to deliver a strategy for the Arts Council, and the arts in Wales, that encourages innovation and entrepreneurship and that enables the work of our artists and arts organisations to become more resilient and sustainable.</p> <p>Financially resilient will be key for the future. However, our definition of sustainability is wide ranging and extends to environmental, social and economic well being.</p>	
<ul style="list-style-type: none"> <li>■ Becoming a signatory to the Sustainable Development Charter</li> <li>■ Arts Council revenue funding for RFO portfolio has decreased as a percentage of total income by 10 percentage points</li> <li>■ RFO portfolio has achieved a 10 percentage point reduction in the level of its carbon emissions</li> <li>■ Media partnerships with BBC and S4C have been renewed</li> </ul>	<ul style="list-style-type: none"> <li>■ Completion of mapping audit of Sustainability projects in Wales</li> <li>■ Processes for measuring and monitoring environmental targets agreed with the RFO portfolio</li> <li>■ Implementation of BREEAM 'excellent' standards for all new capital projects and BREEAM 'very good' for refurbishments</li> <li>■ Action plans agreed for BBC and S4C partnerships, with at least 4 projects supported</li> <li>■ Evaluation of Nesta Research &amp; Development fund</li> </ul>

Goals for 2018	Targets for 2014-15
<p><b>Protecting and growing the economic base for the arts in Wales</b></p> <p><b>What are we trying to achieve?</b></p> <p>The arts in Wales are sustained by a range of different organisations contributing money, resources and expertise. However, funding (especially in the public sector) is being squeezed, with our local authorities in particular facing increasing difficulties in maintaining current levels of funding. Our priority during 2014-15 will be an advocacy campaign designed to protect local authority investment in the arts.</p>	
<ul style="list-style-type: none"> <li>■ Local authority income is maintained at a level comparable to 2013-14</li> <li>■ Value of Collectorplan loans increases by 15 per cent</li> <li>■ Value of private sector income to the Arts in Wales increases by 20 per cent</li> <li>■ Achieve 3:1 return on Arts Council investment</li> <li>■ Secure level of European funding equivalent to 3 per cent of Government grant-in-aid</li> </ul>	<ul style="list-style-type: none"> <li>■ Commission audit of local authority investment in the arts</li> <li>■ Develop advocacy campaign for local authorities</li> <li>■ Value of Collectorplan loans increases by 5 per cent</li> </ul>
<p><b>Demonstrating the value of the arts</b></p> <p><b>What are we trying to achieve?</b></p> <p>We want to promote a positive and engaging view of the arts in Wales, making sure that the arts sector and the wider public in Wales understands what we, the Arts Council, are trying to achieve.</p>	
<ul style="list-style-type: none"> <li>■ 5 per cent increase in media coverage of the Arts in Wales</li> <li>■ 10 per cent increase in public recognition of the Arts Council</li> <li>■ 25 per cent increase in the number of 'hits' on our website</li> <li>■ 5 per cent increase in attendances at our Annual Conference</li> <li>■ 15 per cent increase in attendances at our Sgwrs events</li> </ul>	<ul style="list-style-type: none"> <li>■ At least 5 major press/media campaigns</li> <li>■ Publication of Advocacy toolkit</li> <li>■ 15 per cent increase in attendances at our Sgwrs events</li> <li>■ Develop new Arts Council media and web platforms</li> </ul>

Goals for 2018	Targets for 2014-15
<p><b>Making the Arts Council and effective and efficient public body</b></p> <p><b>What are we trying to achieve?</b></p> <p>As a public body we have a responsibility to create a strong, confident organisation providing services that are relevant and useful. We provide professional services across a range of disciplines. As well as aiming for quality in the delivery of these services, we're committed to doing so in ways which reduce cost and recognise our responsibility to become a more environmentally sustainable organisation.</p>	
<ul style="list-style-type: none"> <li>■ Grant in aid running costs increase by no more than 5 per cent of 2013-14 levels</li> <li>■ Transaction processing (grant payments and payments to service providers) consistently meet targets</li> <li>■ Maintain Investors in People rating</li> <li>■ Levels of staff absence in top quartile of peer group WGSBs</li> <li>■ Achieve 14001 standard for Environmental Management of Events</li> <li>■ 90 per cent of internal audit assurance reports achieving a rating of at least "substantial assurance"</li> <li>■ 100 per cent of Complaints and Freedom of Information requests handled within time limits</li> <li>■ 70 per cent satisfaction rating by Stakeholders and Clients</li> </ul>	<ul style="list-style-type: none"> <li>■ £50,000 reduction in grant in aid running costs</li> <li>■ 75 per cent of internal audit assurance reports achieving a rating of at least "substantial assurance"</li> <li>■ 100 per cent of Complaints and Freedom of Information requests handled within time limits</li> <li>■ Review of the management of our brand</li> </ul>

*Nicholas Capaldi*  
Accounting Officer

11 July 2014

*Professor Dai Smith*  
Chairman

11 July 2014

## Strategic Report

### Objectives, activities, achievements and performance for the public benefit

The Council's chartered objects are:

- a to develop and improve the knowledge, understanding and practice of the arts;
- b to increase the accessibility of the arts to the public;
- c to advise and co-operate with Our National Assembly for Wales, Departments of Our Government, local authorities, The Arts Councils for England, Scotland and Northern Ireland, and other bodies on any matters concerned, whether directly or indirectly, with the foregoing objects; and
- d to carry out the objects through the medium of both the Welsh and English languages.

The Council's main purpose is to support and develop the arts in Wales for the benefit of people throughout Wales. The principal way in which Council seeks to fulfil this purpose is by the formulation of arts strategies, research, and providing recurrent and one-off grants to organisations and individuals within a strategic and developmental context. Such grant making is backed up by a process of monitoring and assessment to ensure that public money is used effectively for the intended purposes. The Council also manages a range of non-grant activities and services, often in partnership with local authorities and others.

### Main objectives for the year

The Council's strategic priorities for 2013-14 are set out in the table below according to our Corporate Plan themes, alongside key achievements made in relation to each operational target during the year:

Action	Target	Achievements and performance
<p><b>Supporting the best in the creation of great art –</b>  <b>What will success look like?</b></p> <p>We are passionate about the arts. We are ambitious for their success. At their best – and it's the best we're interested in – the arts have the power to excite, inspire, move and challenge. We want to shape an environment for our artists and organisations in which they can create their best work. We want the people of Wales to be able to enjoy and take part in the best that our nation has to offer. And we believe that the best experience of art only happens when this chord is struck, when art connects. That's our definition of great art. Making art, sharing art, being a part of it, in the community, in performance, off the page, in a space, in lives – this is when art works, inspirationally, individually, collectively.</p> <p>Of course, we can't guarantee that every artist or arts organisation that we support will always be producing work at the top of their game. However, we can help to create an environment in which ambitious, exciting and compelling work becomes a more likely outcome.</p>		
1 Produce a new corporate strategy for arts development (Creativity and the Arts)	<ul style="list-style-type: none"> <li>■ Consultation on draft proposals during Q1</li> <li>■ Publication of new Strategy during Q2</li> <li>■ First phase of implementation during Q3-4</li> </ul>	<p>Council approved the latest draft for consultation in December.</p> <p>Consultation ran until 30 April 2014.</p>



Action	Target	Achievements and performance
2 Deliver successful Cymru yn Fenis/Wales in Venice project with featured artist Bedwyr Williams	<ul style="list-style-type: none"> <li>■ Number of visitors by end of Q3 exceeds figure for 2011</li> <li>■ Extent of media coverage exceeds previous years</li> <li>■ Specific identifiable development opportunities for the visual arts sector in Wales</li> </ul>	<p>The Exhibition closed on 23 November 2013 with final attendance figures of approximately 23,000. The Wales pavilion attracted almost 30,000 visitors in 2011.</p> <p>A full evaluation report on the project was taken to Council in February together with the proposed strategic approach to Cymru yn Fenis/Wales in Venice in 2015. These were approved by Council and a budget allocated.</p>
3 Contribute to the planning, development and delivery of a successful Dylan Thomas 100 Festival during 2014	<ul style="list-style-type: none"> <li>■ Attendance at Steering Group meetings</li> <li>■ Published programme of events by Q2</li> </ul>	<p>A prospectus has been prepared and the programme of activity has been launched and is underway.</p> <p>We will take the lead in co-ordinating PR opportunities for arts events throughout 2014 and will continue to monitor the funded projects and their staged contribution to the Festival throughout the year.</p>
4 Support the development of our National Advisers (NAs) and their engagement with our work	<ul style="list-style-type: none"> <li>■ Development of an online community for National Advisers including six monthly Newsletter</li> <li>■ Two workshop/briefing events held during 2013-14</li> </ul>	<p>Discussion groups were held, informing the drafting of the Strategy: Inspire: Our strategy for Creativity and the Arts.</p> <p>During 2013-14 we have not been able to progress Hwb (intranet) access for NAs. This consideration will be factored into a subsequent work programme as Hwb develops as a resource.</p>
5 Ensure nationwide monitoring of the quality of our revenue-funded organisations (RFOs)	<ul style="list-style-type: none"> <li>■ Two quality monitoring reports by National Advisers for each RFO</li> <li>■ A minimum of two quality monitoring reports by Arts Council staff for each RFO</li> <li>■ Officer overview report for each RFO</li> <li>■ Increased participation in Quick Review initiative</li> </ul>	<p>Work is underway in consideration of the recommendations contained in the Advisory report by our internal auditors, presented at the end of 2013-14.</p> <p>Appraisals have been commissioned from National Advisers.</p> <p>At the end of the year we completed 152 Quality Appraisals which equated to 53 per cent of our annual quality monitoring target. Officer reports were significantly behind target. A radical overhaul of Quality Appraisal will be necessary to correct this position in 2014-15.</p>
6 Deliver a full year programme of grant awards to individuals and organisations	<ul style="list-style-type: none"> <li>■ Administration of grants management processes</li> <li>■ Delivery of Creative Steps programme</li> <li>■ Delivery of Creative Wales awards and Creative Wales conversations</li> </ul>	<p>We commissioned an external evaluation of the effectiveness of the Guidelines and will be considering a review of the whole grant process and Guidelines to ensure that they reflect Creativity in the Arts and possible incorporate a reduction in the number of funding programmes.</p> <p>We are still progressing work on the next stage of Creative Steps and have continued to make awards with two major projects reaching a significant stage of development in the last quarter.</p> <p>Creative Conversations, rounded off with an award ceremony for the Creative Wales Awards took place in February. The event was well received by attendees..</p>

Action	Target	Achievements and performance
7 Deliver programme of projects and services that assist artists and arts organisations to exploit the international potential of their work	<ul style="list-style-type: none"> <li>■ Develop successor programme to Creating 2013</li> <li>■ Year 3 of Wales Arts International/British Council partnership and negotiate next phase of collaboration</li> <li>■ Lead on WOMEX 2013</li> <li>■ Deliver digi-music tourism project</li> <li>■ Participate in European networks and future project developments</li> <li>■ Engage with the development of Creative Europe and other future strands of European Funding</li> <li>■ Use Wales European Arts Forum provide intelligence and guidance for arts organisations seeking European funding</li> <li>■ Work on showcasing (e.g. Edinburgh, SxSW)</li> <li>■ Strategic work with Welsh Government in priority countries</li> <li>■ Deliver funding through the International Opportunities</li> </ul>	<p>We are continuing to deliver across a broad range of international activity and PR opportunities are discussed continuously with the WAI team to ensure maximum exposure is achieved.</p> <p>The next WAI 5 year strategy is being drafted in line with Creativity and the arts. The new partnership agreement with British Council is still in progress and will be agreed in 2014-15.</p> <p>We will be working with Welsh Government's Department for Economy Science &amp; Transport to establish the best solution for delivering the Creative Europe Funding programme in Wales. We have agreed to look at a secondment in 2014-15.</p> <p>85 artists have been supported to date through the International Opportunities Fund.</p> <p>WOMEX 13 took place in October and was a resounding success as an event. The headline achievements were reported to Council in December. The targets for the event have been met or exceeded. As the event was entered into largely for its potential to have legacy, the team is now engaged in evaluation and the wrap up of the project which will extend into the new financial year.</p>
8 Use our media contacts to promote the arts in Wales	<ul style="list-style-type: none"> <li>■ Level of coverage and air time received for the arts increases</li> </ul>	<p>The Communications Strategy has been approved by SMT. Media opportunities are continuously explored. Monthly meetings with media contacts remain valuable.</p>
9 Deliver effective presence at external events, promoting and supporting the arts in Wales	<ul style="list-style-type: none"> <li>■ Successful presence at National Eisteddfod, Urdd Eisteddfod and Hay</li> </ul>	<p>The National Eisteddfod presence was deemed a success. More visitors attended Y Lle Celf than in previous years.</p> <p>WOMEX 13 took place in October and was a resounding success. A full evaluation report will be presented to May 2014 Council.</p>
<p><b>Encouraging more people to enjoy and take part in the arts –</b></p> <p><b>What will success look like?</b></p> <p>Levels of arts attendance and participation are currently high in Wales. But as average household income reduces, attendance and participation figures will come under pressure. However, it's not just about defending and protecting what already exists. We want to see the arts activities that we support reaching out to a wider cross section of the population of Wales – to people who've previously experienced barriers to attending and taking part in the arts.</p>		

Action	Target	Achievements and performance
10 Work with the Welsh Government to support the implementation of the findings of the Arts and Education Review	<ul style="list-style-type: none"> <li>■ Action Plan agreed</li> <li>■ Findings of RFO mapping exercise published by Q2</li> <li>■ Design and produce final report for Welsh Government</li> </ul>	Welsh Government's response has been received. The Government has accepted all of the report's recommendations and identified funds for their implementation. Arts Council is working with Welsh Government on plans for implementation.
11 Address the recommendations on Participation in the Arts from National Assembly Communities, Equalities and Local Government Committee	<ul style="list-style-type: none"> <li>■ Prepare strategic response to Committee report by Q1, reporting on progress</li> <li>■ Publish information, and provide training, on alternative sources of funding</li> <li>■ Develop a strategy to increase levels of funding from business</li> <li>■ Design an action research programme for increasing participatory activity in partnership with a Communities First Hub</li> <li>■ Pilot new business models for promoting community arts</li> </ul>	<p>Action Plan agreed. Ideas People Places is a pilot programme that will include looking at new models for community focused work.</p> <p>Work is progressing around new business models for the arts sector broadly, but we do not anticipate test driving new models this year.</p> <p>We are working closely with ArtsWorks Cymru and supported a very successful 'all Wales' dissemination and networking event. Paul Hamblyn Foundation has agreed further funding and we are now in discussion about developing our partnership.</p> <p>The proposed action research programme did not go ahead.</p> <p>Following discussions with Communities First the agreed focus for the work in this year is arts and young people.</p>
12 Implement our strategies for Young Creators and Child Poverty	<ul style="list-style-type: none"> <li>■ Implement Action Plans</li> <li>■ Report progress on quarterly basis</li> </ul>	Family Arts campaign has progressed in line with the programme. The next phase of the Festival work has commenced.
13 Implement our Strategic Equality Plan	<ul style="list-style-type: none"> <li>■ Publish Action Plan for 2013-14 by Q1</li> <li>■ Report progress on quarterly basis</li> <li>■ Equality Impact Assessments completed/ updated as appropriate</li> </ul>	<p>We achieved 4 of the 6 key areas of our Strategic Equality Plan 2013-14.</p> <p>Whilst we made some progress against the objectives under Internal Training and Partnerships we did not fully achieve all actions in these areas. Work on these will continue into 2014-15.</p> <p>Diverse Cymru are close to completing their work on developing the Equalities guidelines/toolkit and we have agreed a programme of training and development for Arts Council staff.</p>
14 Promote our Welsh Language Scheme through the implementation of the 15 key targets in our Welsh Language Action Plan for 2013-14	<ul style="list-style-type: none"> <li>■ Publish Action Plan for 2013-14 by Q1</li> <li>■ Report progress on quarterly basis</li> </ul>	<p>The 2013-14 Action Plan was published in April 2013 and arrangements in place throughout the year for its quarterly monitoring and reporting of progress to the Welsh Language Monitoring Group and Council.</p> <p>We achieved our actions against all 3 strategic areas of the plan.</p> <p>The Welsh Language Commissioner has approved our Welsh Language Annual Report 2012-13.</p>

Action	Target	Achievements and performance
15 Work with our portfolio of presenting organisations (venues and galleries) to increase and diversify their audiences	<ul style="list-style-type: none"> <li>■ Minimum of 4 action research projects during 2013-14</li> <li>■ Development by Q4 of a ticketing scheme for disabled people in all our RFO presenting venues</li> <li>■ Trial of new framework, during 2013-14, for evaluating impact on wellbeing of attending the arts</li> <li>■ Increase in levels of engagement and participation across our RFO portfolio</li> </ul>	<p>We approved a second stage proposal from the Red House for the Merthyr based project in Q3 and, in Q4, a second stage proposal for Llantarnam Grange.</p> <p>We appointed Creu Cymru to undertake the second stage of the Disability Ticketing scheme and work commenced in Q4.</p> <p>The Wellbeing research with venues was concluded and a draft report shared with ACW. A final report is expected in May 2014.</p> <p>Figures for the first 6 months of the year show RFO's delivered a total of 9,090 arts events during the six month period which generated attendances of 1.82 million. 38,429 participatory art sessions were delivered, with 554,612 attendances made to these workshops. Figures for the final 6 months will be collected in May 2014 and an annual summary published in July.</p>
16 Support methods of engaging 'hard to reach' young people through the delivery of the Splash Arts and Reach the Heights programmes	<ul style="list-style-type: none"> <li>■ Development of new successor funding scheme</li> <li>■ 500 young people supported</li> <li>■ 20 projects supported across Wales</li> <li>■ Develop child poverty project in partnership with another cultural body</li> <li>■ Number of young people progressing on to further education, training and employment</li> <li>■ Identifying opportunities for further European funding</li> </ul>	<p>Significant progress was made during Q3 with a successful application to Communities First for partnership funding for an interim pilot project.</p> <p>We received 27 project proposals and offered funding to 14, all of which were up and running before the end of Q4.</p> <p>We have not progressed work around developing a partnership project with another cultural body.</p> <p>We are in discussion with potential partners regarding a European bid to build on the work developed through Momentum.</p>
17 Expand the Developing Talent programme of activity	<ul style="list-style-type: none"> <li>■ Criw Celf visual arts initiative rolled out by Q2 across local authorities in South East and South Central regions</li> <li>■ National Youth Arts Wales' targets achieved by Q4</li> </ul>	<p>Criw Celf has been successfully rolled out in South east and South Central.</p> <p>An evaluation will be commissioned in the new financial year.</p>

Action	Target	Achievements and performance
18 Promoting high quality touring activity in local communities across Wales, especially through the work of the Arts Council's Night Out service	<ul style="list-style-type: none"> <li>■ Through our Night Out service deliver 550 events, of which 150 will be in Communities First areas and 12 will be Young Promoters events</li> <li>■ Develop initiatives to increase the availability of "family friendly" activity</li> </ul>	<p>During 2013-14 we delivered a total of 532 Night Out events, 114 (21.4 per cent) of which were in Community First areas and 141 (26.5 per cent) were delivered through the medium of Welsh.</p> <p>There have been 28 Young Promoter events, 6 of which were delivered in partnership with Gwent Police.</p> <p>Total demand for the scheme is down slightly mostly due to a drop of working with community first teams due to its re-organisation.</p> <p>Web site ongoing development but delays due to programming issues – launch early April 2014.</p> <p>9 tours achieved of which 6 were family shows.</p>
19 Work with specialist agencies (Voluntary Arts Wales, Disability Arts Cymru, Diverse Cymru, Stonewall Cymru) to provide support that helps us to deliver our strategic objectives	<ul style="list-style-type: none"> <li>■ Service level or funding agreements in place by Q1</li> </ul>	<p>We are working with Diverse Cymru on two major projects and we have commissioned Voluntary Arts Wales to undertake a programme of work in 2014-15.</p>
<p><b>Growing the Arts Economy –</b></p> <p><b>What will success look like?</b></p> <p>We want to see a financially resilient arts sector that is not wholly dependent on public subsidy. With the value of public subsidy for the arts decreasing in real terms, such dependency can only prove an impediment to innovation, development and sustainability.</p> <p>The Arts Council will use all its powers of advocacy to encourage the widest possible range of public and private sector agencies to invest in the arts. However, we believe that success will largely depend on the extent to which artists and arts organisations are able to build their own business capability and exploit the full value of their artistic worth.</p> <p>As we encourage growth, we must also encourage sustainability. Ways of working that squander resources rather than enhance and protect them run counter to the spirit of the time. We need to address the demands of the present without compromising future generations' economic, social and cultural well being.</p>		
20 Agree a new three year strategy for the Arts Council investment in the arts	<ul style="list-style-type: none"> <li>■ Review of RFO portfolio</li> <li>■ New funding allocations to RFO</li> <li>■ appropriate strategic funding streams and budgets in place</li> </ul>	<p>A two year strategy was agreed by Council in December 2013. The shorter timeframe reflects the funding timetable of Welsh Government and the date of the next Assembly elections in Wales.</p>

Action	Target	Achievements and performance
21 Encourage our portfolio of RFOs to become more resilient and sustainable (culturally, organisationally and financially), and provide information on the portfolio's performance	<ul style="list-style-type: none"> <li>■ Number of performances/ exhibitions/ events and audience/ participant numbers</li> <li>■ Geographical distribution of activity</li> <li>■ Publish 2011-12 RFO Annual Review Meeting reports by Q2</li> <li>■ Hold 2013-14 Annual Review Meetings during Q4</li> <li>■ Publish an annual RFO performance report during Q2</li> <li>■ Provide programme of RFO Development initiatives</li> </ul>	<p>We are continuing to deliver against all our targets in relation to the RFO survey and publish our key findings.</p> <p>Last year's ARM was completed although we note that some meetings were not undertaken. Changes have been made to the 2014-15 procedure to help ensure that this does not recur.</p> <p>ARM meetings for 2013-14 took place throughout February and March and the deadline for reports is 4 April.</p> <p>The Annual RFO Performance report has been delayed due to the very fluid situation regarding local authority funding. However, data has been released to our client portfolio regarding audience and participation figures and financial performance.</p>
22 Develop Ideas, People, Places, a challenge fund investing in arts-led regeneration projects that promote art in the public realm	<ul style="list-style-type: none"> <li>■ Policy document published during Q1</li> <li>■ Small scale challenge fund established for individual artists wanting to work in the public realm during Q1</li> <li>■ Minimum of 4 public art residencies underway during 2013-14</li> <li>■ 4 projects commissioned and underway by Q4</li> </ul>	<p>Memorandum of Understanding complete.</p> <p>We have tendered and procured a short term contract to compile the web resources.</p> <p>29 applications were received for consideration for the research and development phase. A sub-group of the Capital committee has been set up to assess the applications. 12 projects were selected to progress to the second stage of assessment. The deadline for this second phase is July 2014.</p> <p>We have appointed a Programme Manager to coordinate the programme including the assessment process. The PM has also attended inception meetings with the successful projects and will offer specialist advice and support to them in the interim.</p> <p>4 specialists (including architects and practitioners) in this area of work have been approached to join the list of National Advisers to assist the decision making group select the best projects. This is still ongoing in order to find suitably qualified assessors and monitors but the sub-group from Capital Committee was the decision making group for the first stage and will make recommendations to Council for the second.</p>
23 Deliver our Lottery capital priorities	<ul style="list-style-type: none"> <li>■ Monitor the progress of our two major capital projects – Pontio (Bangor) and Glynn Vivian (Swansea)</li> <li>■ Monthly reports (which are shared with Welsh Government)</li> <li>■ All appropriate legal agreements are in place and followed</li> </ul>	<p>A Deed of Covenant with Bangor University has been finalised and signed by all parties.</p> <p>Regular steering group meetings have been attended by officers. Officers are also invited to attend specific project steering groups, such as Myrddin and Mission Gallery.</p>



Action	Target	Achievements and performance
24 Initiate a programme of activity that encourages the development of digital capacity in the arts	<ul style="list-style-type: none"> <li>■ Advocacy/best practice showcase events</li> <li>■ Digital R&amp;D Fund established in association with Nesta, with first cohort of projects supported by Q1</li> <li>■ Digital Producers Development fund established</li> </ul>	<p>12 digital producers have completed the course.</p> <p>Second round of the digital R&amp;D fund closed in January. Two further projects were supported in addition to the four supported through the initial round.</p>
25 Re-launch the Collectorplan scheme	<ul style="list-style-type: none"> <li>■ An Action Plan is published</li> <li>■ New website developed</li> <li>■ Media campaign supporting relaunch during 30th anniversary year</li> <li>■ Increase in second half of year in value and number of loans</li> </ul>	<p>We are awaiting the new financial credit regulations. New website is currently under development.</p> <p>A successful press campaign was delivered around the Collectorplan 30th birthday in December.</p> <p>Increases in usage have been recorded during the campaign which targeted Christmas sales.</p> <p>An action plan is now in place to take forward the recommendations from the Bond Report. A 5 per cent increase in sales is in our targets for 2014.</p>
26 Deliver WOMEX 2013 as a world class event to realise its potential as a catalyst for the music sector in Wales	<ul style="list-style-type: none"> <li>■ Number of trade fair exhibitors</li> <li>■ Number of delegates</li> <li>■ Number of attendees at evening concerts and events</li> <li>■ Delivery of digi-tourism music project</li> <li>■ Delivery of legacy programme that has catalytic effect on development of sector in Wales</li> <li>■ Delivery of Horizons programme</li> <li>■ Value to local economy</li> <li>■ Delivery of the project within the agreed budget</li> </ul>	<p>WOMEX 13 took place in October and was a resounding success as an event. The headline achievements were reported to Council in December.</p> <p>The targets for the event have been met or exceeded.</p> <p>As the event was entered into largely for its potential to have legacy, the team is now engaged in evaluation and the wrap up of the project which will extend into the new financial year.</p>
27 Deliver successful Arts Council corporate events (Annual Conference, Marketing Symposium and Sgwrs Gelfyddydol)	<ul style="list-style-type: none"> <li>■ Attendance numbers</li> <li>■ Delegate satisfaction</li> </ul>	<p>The Spring Sgwrs Gelf series was successfully delivered.</p> <p>Creative Futures, our annual conference was deemed a success with 183 attendees noting this was one of the best to date. 83 per cent of respondents to the subsequent survey rated the event as good to excellent.</p> <p>An evaluation will take place on all our events and a strategy will be produced with a clear focus on all future events.</p>

Action	Target	Achievements and performance
28 Develop the entrepreneurial leadership skills that help artists and arts organisations to develop forward-looking, sustainable and resilient business practice	<ul style="list-style-type: none"> <li>■ Development, with Arts and Business Cymru, of the MENTORA project</li> <li>■ Piloting of Mission, Models Money projects</li> <li>■ Short course initiatives</li> <li>■ 3 modules of the Arts Council's RFO Development Programme delivered in 2013-14 (Governance, Business Planning and Access)</li> </ul>	<p>The financial situation of Arts and Business has been clarified now for 2014-15 and we will be working with them to progress their new business plan.</p> <p>Mission Models Money programme is up and running although take-up has not been as high as we would have liked. An action learning set has emerged from the projects worked and is meeting regularly.</p> <p>We have signed up to the Wales Clore Fellowship for 2014-15.</p>
29 Embed our new three stranded (national, regional and individual) partnership with local government across Wales	<ul style="list-style-type: none"> <li>■ Membership of the Chief Culture and Leisure Officers of Wales (CCLOW) group</li> <li>■ Production of national arts and cultural policy based on RBA scorecard approach</li> <li>■ 'Pairing' of Arts Council Director with LA region</li> <li>■ Lead officer designated for every local authority in Wales</li> <li>■ Programme of AD:UK regional arts development officer meetings</li> <li>■ Agreement to a set of Performance Indicators for the local authority arts and cultural sector</li> <li>■ Integrated national data collection mechanism established on Ffynnon</li> <li>■ Delivery of a Sgwrs Gelfyddydol twice a year in each of the 4 local authority regions</li> </ul>	<p>All the Authorities have signed up to collecting data this year according to the standard negotiated KPI's.</p> <p>This has been agreed by our research officers, CCLOW, WLGA, Welsh Government Data Unit and AD:UK.</p> <p>Directors have held regional internal meetings. This has been particularly important in relation to the current Local Authorities' budgetary situation.</p> <p>We have had officers at the AD:UK meetings.</p> <p>We organised 4 regional Sgwrs events in January/February including sessions on crowd funding, philanthropy and cultural tourism.</p>
30 Develop Public Value Partnerships with BBC Cymru Wales and S4C	<ul style="list-style-type: none"> <li>■ Partnership documents agreed and published</li> <li>■ Delivery of partnership projects (eg: TV scriptwriting in Welsh, WOMEX)</li> </ul>	<p>Public Value Partnership with BBC Wales/Cymru has been signed and launched.</p> <p>Memorandum of Understanding (MoU) with S4C has been agreed and will be launched officially at the media launch for 'Hinterland/Y Gwyll'</p> <p>We have been meeting regularly with BBC and S4C and have started to develop a creative partnership with them.</p>



Action	Target	Achievements and performance
31 Nurture partnerships that support the delivery of our arts priorities, developing new opportunities for artists to commission, develop and present work	<ul style="list-style-type: none"> <li>■ Memoranda of agreement (where appropriate)</li> <li>■ Site Specific initiative with national companies</li> </ul>	<p>MoUs with Cadw, CAT, Canal and River Trust have been signed.</p> <p>MoU with the National Trust has been agreed.</p> <p>Work is progressing to plan with the national companies. Research phase near to completion.</p>
32 Maximise benefits to the arts from European Programme 2014-2020 including structural funds	<ul style="list-style-type: none"> <li>■ Agreement with Welsh Government on areas of possible co-investment 2014-2020 through Structural Funds and Creative Europe eg digital skills</li> </ul>	<p>Continued input to the WEFO Delivery &amp; Compliance Work Stream. Attended launch of new 2014 – 2020 programme by Finance Minister in November.</p>
<p><b>Making the Arts Council as an effective and efficient public organisation –</b></p> <p><b>What will success look like?</b></p> <p>During 2012-13 we implemented the outcomes of our Organisational Review. A new staffing structure is in place. Now our challenge is to create to create a strong, confident organisation providing services that are relevant and useful.</p> <p>We'll be providing professional services across a range of disciplines. And we'll be doing so in ways which reduces cost and recognises our responsibility to become a more environmentally sustainable organisation.</p>		
33 Developing the professional capability, skill and well-being of our staff	<ul style="list-style-type: none"> <li>■ HR policies updated and published in respective Handbooks by Q1</li> <li>■ Team and Individual Work Plans completed for Q1</li> <li>■ New Learning and Development policy and plan by Q1</li> <li>■ Implementation of new Performance Management/360 degree appraisal process by Q3/4</li> <li>■ Introduction of Employee Assistance programme</li> </ul>	<p>Policies review largely completed, a small number of which are awaiting Union sign off.</p> <p>Workplans have been agreed and 1:1 sessions are on-going.</p> <p>We have embarked on a Learning and Development programme.</p> <p>New Performance Management system re-scheduled by SMT for 2014-15 implementation.</p>

Action	Target	Achievements and performance
34 Implement our ICT Strategy	<ul style="list-style-type: none"> <li>■ ICT policies finalized</li> <li>■ Implementation of Windows 7/Office 2010 upgrade by Q1</li> <li>■ Implementation of Night Out website by Q1</li> <li>■ Introduce expense@work</li> <li>■ New Contacts database in place</li> <li>■ Next phases of development of RFO survey completed</li> <li>■ Next phases of development of Hwb completed</li> <li>■ Incorporation of social media capacity into enhanced website</li> </ul>	<p>Finalisation of policies delayed pending completion of revised HR policies.</p> <p>Windows 7/Office 2010 upgrades completed.</p> <p>Core development of the Night Out web application is completed and the project has entered first phase user acceptance testing (UAT). A complete list of issues and bugs has been outlined and work schedule to complete has been published. Completion to live testing due September 2014.</p> <p>Expense@work implemented.</p> <p>Head of Communications leading on the Contacts Database project with ICT supporting. Work on this is progressing and will continue into 2014-15.</p> <p>RFO survey database changes to include protected characteristics have been completed and all associated tools and templates are ready for use.</p> <p>All intranet team pages are live with the exception of two that are currently under development. Developments to improve user adoption continue to be discussed at ICT User Group to inform SMT discussion and decision.</p> <p>Local Authority pages framework on Hwb are almost complete.</p> <p>Social Media on website now implemented.</p> <p>Microsoft Lync roll-out is complete and integration and testing with the video conferencing estate is in place to enable all laptop workers to fully utilise VC both point to point and multipoint. A pilot is also taking place to investigate integrating Lync with the existing telephone system.</p>
35 Develop a suite of Corporate publications and video, promoting the Arts Council brand and the work that we do	<ul style="list-style-type: none"> <li>■ Suite of publications and video produced</li> <li>■ Supporting media campaign</li> </ul>	<p>The film promoting Creativity and the arts has been completed and will run in conjunction with the consultation. Human interest stories are being collated continuously and used when appropriate.</p> <p>Further training for the Communications Team in the production of video has been identified and this will be progressed via the Corporate Learning and Development Plan.</p>
36 Manage our office estate efficiently, safely and at best value	<ul style="list-style-type: none"> <li>■ Complete rationalisation of Cardiff office</li> <li>■ Agree new approach to Carmarthen</li> <li>■ Undertake Emergency Planning rehearsal</li> </ul>	<p>Alternative options for use of 1st floor Cardiff being explored and have opened discussions regarding our current lease with our landlord.</p> <p>New premises in Carmarthen secured; and the Carmarthen Office will relocate in May 2014.</p> <p>Rehearsals undertaken successfully for reinstalling network and software systems in the event of an emergency.</p>

Action	Target	Achievements and performance
37 Develop our Information Service	<ul style="list-style-type: none"> <li>■ Enhanced print and online information</li> <li>■ More extensive programme of funding surgeries</li> </ul>	<p>The programme of Funding Advice Sessions has been re-organised and a particular focus placed on areas of traditionally low take up.</p> <p>Some changes have been implemented as a result of the individual artist working group. We will consider the findings of the Stakeholder survey.</p>
38 Implement cost cutting measures to help us to achieve our Organisational Review financial targets	<ul style="list-style-type: none"> <li>■ Reduction in grant in aid running costs</li> </ul>	<p>Regular reports provided to SMT and Council.</p> <p>Financial targets have been achieved.</p>
39 Retain liP accreditation	<ul style="list-style-type: none"> <li>■ Action plan prepared Q1</li> <li>■ Quarterly monitoring</li> <li>■ liP accreditation confirmed Q4</li> </ul>	<p>This year has seen the three yearly review of our Investors in People (liP) accreditation. Organisational Development Group set up to monitor progress against our liP action plan throughout the year.</p> <p>The assessor's overall conclusion was that whilst good progress was evident in some areas, more work, and time was needed to demonstrate impact. We will focus on this aspect in 2014-15.</p>
40 Assess independently the effectiveness of our organisation	<ul style="list-style-type: none"> <li>■ Internal staff satisfaction survey Q2</li> <li>■ External customer satisfaction survey Q2</li> </ul>	<p>Stakeholder, Client and Staff Survey completed and received. The final report has been reviewed by the Steering Group, and will be shared with the relevant audiences.</p>
41 Achieve published targets for processing: a) of grants applicants; b) financial payments.	<ul style="list-style-type: none"> <li>■ Grants management targets</li> <li>■ Targets for payments to suppliers</li> </ul>	<p>All grant applications processed within timescales.</p> <p>As at the end of 2013-14 we paid 95 per cent of suppliers within the terms of our agreed payment policies, and 85 per cent within 10 days. Last year we achieved 94 per cent and 72 per cent respectively. Performance is reported in financial reports to Council (quarterly) and SMT (monthly).</p>
42 Review and simplify our grant making processes	<ul style="list-style-type: none"> <li>■ Grant Processing Group established Q1</li> <li>■ Complete review of current processes Q2</li> <li>■ Review and simplify all Guidelines Q2</li> </ul>	<p>We commissioned an external evaluation of the effectiveness of the Guidelines and will be considering a review of the whole grant process and Guidelines to ensure that they reflect Creativity in the Arts and possible incorporate a reduction in the number of funding programmes.</p>
43 Manage our financial resources to the highest standards of accountability	<ul style="list-style-type: none"> <li>■ Annual statutory accounts; interim and final audits</li> <li>■ Whole of Government Accounts</li> <li>■ Budget setting</li> <li>■ Monthly management accounts</li> <li>■ Statutory returns</li> </ul>	<p>All deadlines to date in respect of both sets of Statutory Accounts and WGA, achieved.</p> <p>Management accounts submitted to SMT and financial reports to Council</p>

Action	Target	Achievements and performance
<p>44 Develop a constructive relationship with Welsh Government through:</p> <p>a) Delivery and reporting on requirements of the Remit Letter 2013-14;</p> <p>b) Biannual meetings with the Minister;</p> <p>c) Culture Forum;</p> <p>d) Quarterly Monitoring Meetings with officials</p>	<ul style="list-style-type: none"> <li>■ Papers produced and circulated within timescales for meetings</li> <li>■ Reports produced as appropriate</li> </ul>	<p>Arrangements are in place to ensure meeting papers are produced and circulated within designated timescales.</p> <p>Reports are circulated, as required, to the Minister and as part of our Quarterly Monitoring meetings.</p> <p>All Assembly questions (AQs) are responded to within timescales. During 2013-14 we had received and responded to 231 AQs.</p>
<p>45 Annual Report for 2012-13 published</p>	<ul style="list-style-type: none"> <li>■ Report produced and published including information about: <ul style="list-style-type: none"> <li>a Operational Plan</li> <li>b Welsh Language Action Plan</li> <li>c Strategic Equality Plan</li> <li>d Equalities</li> <li>e Equality Impact Assessments</li> <li>f Environmental responsibilities</li> </ul> </li> </ul>	<p>The annual report has been designed and published on our website.</p>
<p>46 Support the corporate management of the Arts Council's business through:</p> <p>a) The management and organisation of Council and its Committees;</p> <p>b) The management and organisation of the Senior Management Team;</p> <p>c) The management and organisation of Management Board</p>	<ul style="list-style-type: none"> <li>■ Timely preparation of agendas, papers and minutes of meetings</li> <li>■ Organisation of: <ul style="list-style-type: none"> <li>a 6 Council meetings</li> <li>b weekly senior management meetings</li> </ul> </li> <li>■ Quarterly Management Board meetings</li> </ul>	<p>Meetings scheduled in diaries for the current year.</p> <p>Arrangements are in place to ensure meeting papers are produced and circulated within designated timescales.</p>

Action	Target	Achievements and performance
47 Ensure the diversity of the Arts Council of Wales Council members and its staff	<ul style="list-style-type: none"> <li>■ 50 per cent of Council members and staff are Welsh language speakers</li> <li>■ Diversity represented within Council</li> </ul>	<p>Currently we have 60.4 per cent of staff and 53 per cent of Council Members who are Welsh speakers.</p> <p>The diversity of the Council members improved following recruitment of new members during 2012-13. Findings detailed in Annual Equality Report 2012-13 presented to Council during the year suggest further work is required with regards to increasing diversity amongst staff and this will form part of our Strategic Equality Action Plan for 2014-15.</p> <p>However, any action in respect of this would need to be managed in accordance with recruitment opportunities as they arise.</p>
48 Deal effectively with Welsh Government enquiries, complaints and Freedom of Information (Fol) requests	<ul style="list-style-type: none"> <li>■ 100 per cent of Welsh Government enquiries, Complaints and Fol requests dealt with in the specified timescales</li> </ul>	<p>Procedures are in place to ensure all complaints and Fol requests are responded to within designated timescales. During the year we received one formal complaint relating to a tendering exercise which was partially upheld. We also received 25 Fol requests, all of which were responded to within the statutory deadlines.</p>
49 Meet our environmental responsibilities in accordance with the Welsh Government's Sustainable Duty	<ul style="list-style-type: none"> <li>■ Produce environmental statement Q4</li> </ul>	<p>We have achieved level 5 rating in the recent Green Dragon Environmental audit scheme. This was achieved ahead of the planned schedule of 2015.</p> <p>New quarterly reporting format has been agreed in Environmental Communications plan – annual report by April 2014 with quarterly updates to begin in 2014-15 financial year.</p> <p>A Task and Finish Group has been set up and meetings are underway.</p>
50 Implement new payroll systems	<ul style="list-style-type: none"> <li>■ Real Time Information provided on monthly basis to HMRC Q1</li> <li>■ Pensions auto-enrolment</li> </ul>	<p>RTI completed.</p> <p>Auto-enrolment to be introduced in 2014-15 in line with our staging date.</p>

Detailed monitoring of performance against these performance indicators is carried out and reported on quarterly to the Senior Management Team, Council and the Welsh Government.

### Grant making policies

The Council invites applications for recurrent and one-off grants from organisations and individuals and monitors the proper and effective use of those grants. As well as meeting the Council's strategic aims, applications must demonstrate benefit to the people of Wales across all regional, cultural and economic sectors. Recurrent grants are funded from grant-in-aid only but one-off grants may be funded from grant-in-aid or lottery income. Under the terms of its Lottery Policy Directions the Council makes grants in support of capital and other projects under revenue schemes relating to the arts in Wales.

Capital grants, to organisations only, support the purchase, improvement, restoration, building or creation of an asset that will be used continuously.

Council has delegated its grant making in a number of strategic areas to Ffilm Cymru Wales, Nesta, BBC Cymru Wales, and Literature Wales. The terms of the external delegation are set out in formal agreements and satisfy the conditions of the Council's Statement of Financial Requirements. The obligations of the Council's Accounting Officer are unchanged by the delegation but he has satisfied himself that the organisations and their systems are suitable to undertake the delegated functions, including: the assessment of applications for funding; holding, accounting for and distributing Lottery money allocated to them by the Council for that purpose; and monitoring funded projects. The delegation agreements allows for appropriate access to the Agency by the Council's internal auditors and by the Comptroller and Auditor General for the review of the operation of the delegated functions.

Revenue scheme grants are available to help fund time-limited artistic projects of high quality which best meet the Council's funding priorities.

On-going monitoring of our grant aid programmes alerts us to any specific risk issues. Identified risks lead to an escalation of the level of monitoring and, if necessary, can result in the payment of funding being with-held and/or deferred.

The Council publishes general guides to funding for organisations and individuals which include full details of funding priorities and eligibility criteria. These are available from any of the Council's offices and from the website: [www.artscouncilofwales.org.uk](http://www.artscouncilofwales.org.uk).

### Principal Lottery distribution activities

	2013-14	2012-13
<b>Number of applications received:</b>		
Capital schemes	36	21
Revenue schemes	1,258	789
	<u>1,294</u>	<u>810</u>
<b>Number of grant offers made:</b>	<u>906</u>	<u>471</u>
<b>Value of grant offers made:</b>	£000	£000
Capital schemes	2,371	3,928
Revenue schemes	15,707	8,030
	<u>18,078</u>	<u>11,968</u>
<b>Hard commitments (grants accepted but not yet paid over) at 31 March:</b>		
Capital schemes	6,615	6,461
Revenue schemes	6,534	5,410
	<u>13,149</u>	<u>11,871</u>

### Financial review

The Council has two principal funding sources: grant-in-aid from the Welsh Government; and, as one of the bodies responsible for the distribution of funds for good causes, a share of the proceeds raised by the National Lottery. The Council is required to account separately for its general activities.

## Investment

Investment powers are governed by the Trustee Act 2000 and the Framework Document issued by the Welsh Ministers and the Financial Directions issued by the Secretary of State for Culture, Media and Sport. The Council's policy is to achieve the maximum return within these terms. Interest at a negotiated rate linked to bank base rate is received on all credit balances in the Council's current accounts. From time to time, higher rates may be available for restricted funds on long term deposit.

Since October 2013, to minimise risk to our charitable and public funds whilst retaining the control and flexibility needed for day-to-day operations, the Council opened accounts with CCLA Investment Management Limited which allows us to make daily transfers of surplus funds between their Public Sector Deposit Fund and our bank current accounts. The Fund is AAmmf rated by Fitch Ratings.

Balances held in the National Lottery Distribution Fund remain under the stewardship of the Secretary of State for Culture, Media and Sport so, although the Council receives investment income on its share of such balances, the Council has no investment powers over the Fund.

## Financial results

	<b>2013-14</b>	2012-13
	<b>£000</b>	£000
Share of proceeds from the National Lottery	<b>16,892</b>	19,355
Increase/(decrease) in funds for the year	<b>(2,269)</b>	3,396
Grant expenditure (offers made in this year and previous years which are formally accepted during the year)	<b>15,359</b>	12,101
Soft commitments (grants offered but not formally accepted) at 31 March, not recorded as expenditure in the Statement of Comprehensive Net Expenditure	<b>2,830</b>	339
Balance held in the National Lottery Distribution Fund at 31 March	<b>20,264</b>	20,601
<b>Reserves at 31 March</b>	<b>7,926</b>	10,195

In February 2008 a statutory instrument was passed which allowed for the transfer of up to £1,085,000,000 from the National Lottery Distribution Fund to the Olympic Lottery Distribution Fund in order to meet some of the costs of hosting the 2012 London games. The Council was committed to contribute up to £3,552,000 in the original bid and this order allows for the transfer of up to a further £4,509,000. Similar amounts were transferred every three months until August 2012. During 2013-14 there were no further transfers (2012-13 £1,010,000).

The level of grant offers made during the year increased compared to the previous year, as did the level of hard commitments. These include significant sums relating to major capital projects, payments for which will be released on a prompt and timely basis at key points during the life of each project. A number of the more complex projects have taken longer to progress than originally envisaged. Income was also higher than projected. The combination of these factors affected the level of balances.

## Social and community issues

We are committed to ensuring that the Council's funding is accessible and of benefit to all the citizens of Wales. Ensuring greater access to the arts is a natural priority for a body, such as us, that is in receipt of public funds. We are fully committed to removing the barriers that prevent and impede people from enjoying and taking part in the arts.



We continue to have strategies targeted at young people, community and voluntary arts and broadening public engagement in the arts. We have moved forward this year on a number of key programmes. We have commissioned work to establish a disability ticketing scheme for disabled theatre goers and their carers, commissioned a diversity and equalities toolkit for the arts and a bespoke training and CPD programme for our staff.

We launched a pilot participatory project, in partnership with Communities First, targeting our most disadvantaged young people and began discussions with the Baring Foundation and Age Cymru about supporting a project focusing on our older people living in care homes.

The Our Space programme has provided opportunities for venues and other arts providers to explore innovative approaches to audience development, targeting in this young people and people from our black and minority ethnic (BME) communities.

Our grant schemes have over-arching funding priorities directed at projects promoting the work of artists from under-represented groups such as disabled people and people from black and minority ethnic backgrounds. Recognising the bilingual culture of Wales, we also prioritise applications that will be delivered in Welsh or bilingually.

As we move forward into 2014-15 our focus will be to complete and build on the projects we have initiated this year. The diversity toolkit will be launched through a series of training events and our in-house equalities training programme will begin. We will progress our disability ticketing scheme and our partnership project for older people will begin.

Children and young people will be a primary focus for our work as we implement our work around child poverty and arts and education.

We plan to re-launch Our Space with a view to focusing this scheme on families living in our most deprived communities.

## Sustainability

The Welsh Government's White Paper "A Sustainable Wales – Better Choices for a Better Future" sets out its vision and proposals for embedding sustainability as the central organising principle for the wider public services in Wales when the Sustainable Development Bill becomes legislation. The Arts Council of Wales is amongst the first wave of organisations subject to the Sustainability Duty when it becomes law.

We have therefore reflected this into the development of our new arts development strategy Inspire: Creativity and the Arts which puts sustainable development at the heart of our activities moving forward and explores in a holistic way how the arts sector can contribute to social and economic – as well as environmental – sustainability.

At its October 2013 meeting, Council considered and approved a Project Initiation Document and an Equality Impact Assessment for the establishment of a Sustainable Development Task and Finish Group. The main aims of this group were:

- 1 To plan, organise and deliver a sustainable development strategy for the Arts Council of Wales.
- 2 To develop an operational plan to deliver the above and be compliant with any relevant legislation and guidelines from Welsh Government (for implementation from April 2014 onwards).

The Task and Finish Group has met twice, once in November 2013, once in March 2014 and has made excellent progress. We have commissioned research and a mapping exercise to identify and share best practice models both within Wales and beyond. We have also commissioned a piece of digital filmmaking that makes the case for Sustainable Development to assist in the training of staff and arts organisations and in our leadership role within the arts sector.



We have now got a draft Sustainable Development Policy that will take a three pronged approach – firstly, what we can deliver ourselves through our own procedures, policies and services; secondly, what we can encourage and support the individuals and organisations we work with to achieve and thirdly, how we can use our position of leadership to promote sustainable development more widely. We also end the year with an action plan to take forward the various objectives and monitor progress throughout the next financial year.

During the next year we will be developing our plans further to meet our duties under the Sustainable Development Bill in order to ensure that we fully play our part in delivering the Welsh Government's vision. We are totally committed to doing so.

## Environmental report

We are committed to operating our business in a sustainable manner, and to applying good environmental practice in order to reduce our environmental impact and continually improve our performance.

Although we are below the Welsh Government's de minimis level, we decided we would continue to voluntarily report more fully on our environmental performance. We believe this to be in line with the spirit of the Welsh Government's aspirations for, and our commitment to drive forward with the Sustainable Development agenda.

### **Review of progress:**

Since introducing an environmental policy some years ago, we have focussed on improving our environmental performance. We have made good progress, through a combination of financial investment, the introduction of systems, changing our operating practices, and through the commitment of our staff.

We continue to operate from three locations across Wales and will, in the early part of the new financial year, have achieved our target to reduce the size of our estate by 25 per cent. Our North Wales based staff now work out of smaller premises, we moved our Cardiff based staff into a smaller area, and recently relocated to smaller premises in West Wales. Our offices are fitted with a range of energy saving devices and equipment.

Our offices are accessible through public transport networks. In recent years we have seen an increase in the number of visitors using public transport to reach us, as well as an increase in the number of staff using trains and buses for their journeys to and from work.

We use energy-saving devices and equipment to reduce electricity consumption and encourage staff to reduce consumption whenever possible. We recently replaced our photocopying and printing multi-functional devices with new Energy star rated equipment which reduces power consumption by 35 per cent from replaced models. We also replaced all of our monitors. These too have an Energy star rating and reduce power consumption by 25 per cent in comparison to similar LED screens.

The focus of our ICT strategy in recent years has been on extending the use of our information technology infrastructure to provide business and environmental benefits.

Two of our key systems – finance and on-line grant application systems – are fully electronic from initial order or application through to final payment. All supporting documents are accessible electronically. We also scan all incoming mail and invoices etc. This enables staff to access documents remotely, as well as reducing the volume of paper we receive, handle, store and re-cycle, with consequential reductions in our storage requirements.

We have virtualised our IT servers resulting in reduced energy for power and cooling.

More than half of our members of staff are equipped with laptops and smartphones, enabling them to operate on a mobile basis, so reducing their dependency on having to work from our offices. This has helped reduce travel to work journeys and, in turn, their carbon dioxide (CO<sub>2</sub>) emissions. We have not yet been able to report accurately on the impact of this but will be examining the feasibility of doing so in future.

We have upgraded and extended our video conferencing capacity in all three offices and actively promote its use as an alternative to travel. We are currently implementing a programme to enable our mobile workers to participate in video conferencing meetings with colleagues and clients whilst away from our premises. We expect to fully implement this initiative during 2014-15.

In addition to improving the environmental performance of our offices, we have also made progress in changing organisational behaviours.

The introduction of a new staffing structure in 2011 and flexible, mobile working arrangements has resulted in some staff needing to travel more between offices, and to increase the level of visits made to funded organisations. However, we have introduced a number of initiatives to off-set the impact of this.

We promote the use of environmentally friendly means of transport, restrict travel to necessary journeys only, and encourage staff to make journeys by the most efficient means possible, taking account of both environmental and financial considerations. Car sharing is encouraged, and we provided cycle racks in our Cardiff office. We are considering introducing further incentives.

Our staff induction programme includes Environmental Awareness, and members of staff are given periodic training and updates as appropriate.

We promote the minimisation of waste amongst our staff by encouraging reduction, reuse and recycling. Recycling and waste separation, which reduces the amount sent to landfill, is actively promoted internally, and we use licensed and appropriate organisations to dispose of our waste. We recycle our surplus and redundant IT and office equipment.

All our major suppliers of office equipment and supplies have environmental policies and reporting mechanisms in place, and we consider environmental performance and awareness when selecting contractors and suppliers.

We have standardised our stationery, and use recycled FCS paper supplies for at least 90 per cent of our copying and other internal needs. Managers and staff are provided with monthly reports analysing printing and copying activity, to encourage lower overall usage.

Our cleaning contractors have environmental policies in place that ensure they use eco-friendly products and equipment; any change to cleaning products has to be agreed with us.

We have significantly reduced, in recent years, the number of printed paper copies of our corporate publications, and now use electronic means as our default position. This has helped reduce paper consumption, the quantities delivered, and our storage requirements.

Allied to this, our website provides a wide range of information to grant applicants, artists and arts organisations, and to the general public. This helps us deliver our level of service without the need to print and send paper copies. Our main website has now been in operation for over four years, so we will be reviewing our suite of websites and their content during the year with a view to making them more accessible, increasing the level of information and content, and improving our standards of service.

We were pleased that our efforts have been recognised and helped us secure level 5 Green Dragon accreditation during the year. We see this as a testament to the progress we have made in recent years.

## Our performance

Our internal reporting systems enable us to capture and measure details of our use of consumables, waste, energy, water and staff travel, and thus our CO<sub>2</sub> emissions. Following guidance from Green Dragon, we have enhanced our waste reporting matrix and intend to continue to broaden and refine our reporting.

All three offices are now on a shared occupancy basis, with certain costs included within our service charge, particularly relating to waste costs and water usage. This restricts our ability to accurately assess our water and, to an extent, electricity usage. We will be exploring with our landlords the practicalities of introducing systems to improve our data capture.

	2013-14	2012-13
Waste:		
Non-financial (tonnes)		
Landfill – <i>estimate</i>	<b>1.65</b>	2.2
Reused/recycled – <i>estimate</i>	<b>6.44</b>	7.45
Greenhouse gas emissions (CO <sub>2</sub> )		
Gross emissions, scope 2&3 (indirect)	<b>61</b>	61
Energy consumption (Kwh)		
Electricity (non-renewable)	<b>125,644</b>	126,708
Electricity (renewable)		
Gas	<b>N/A</b>	N/A
Financial indicators (£)		
Expenditure – energy	<b>21,709</b>	18,900
Water supply costs (office estate) – currently unable to assess, included in service charge	<b>N/A</b>	N/A
Travel emissions (CO <sub>2</sub> )		
Rail	<b>8</b>	12
Air <sup>1</sup>	<b>64</b>	64
Car/vans	<b>25</b>	35
Travel cost (£)		
Rail	<b>24,085</b>	33,194
Air	<b>22,646</b>	19,981
Car/vans	<b>47,956</b>	39,440
Travel (miles)		
Rail	<b>102,761</b>	154,806
Air	<b>224,369</b>	221,803
Car/vans	<b>65,695</b>	86,789

1 Includes the influence of radiative forcing in air travel emissions to capture the maximum climate impact. Radiative forcing is a measure of the environmental impact of emissions of NO<sub>x</sub> (nitrous oxides) and water vapour when emitted at high altitude.

## Our ability to influence

As well as seeking to improve our own environmental performance, as the largest grant distributor in the arts sector in Wales, we are uniquely placed to influence changes in behaviour and performance amongst the individuals and organisations we fund.

In previous years we funded the Emergence – Eginiaid programme which focused on the development of a low-carbon arts infrastructure and developing the role of the arts as a crucible of ideas and visions for a low-carbon One Planet Wales. Our work helped fund the Emergence summit, a major arts and sustainability event presented in Machynlleth in late 2012. We funded artists' commissions and film work connected to the event which in turn featured on the BBC/Arts Council England initiative The Space. And we subsequently inaugurated an artist in residence project at the Centre for Alternative Technology and offered further support for Emergence to scope a web-based documentation project.

We actively encourage high environmental standards in the capital projects we grant fund. Two current examples include the major new build project in Bangor, Pontio, which will achieve BREEAM Excellent standard, and the Glynn Vivian project in Swansea will reach BREEAM Very Good, due to its status as an historic building. Future capital projects we fund will also require the recipient to meet appropriate BREEAM standards.

## Looking ahead

As well as continuing to improve our own environmental performance and thus minimise our own impact on the environment, we are keen to influence the organisations and artists we fund to do the same.

Our Sustainable Development Policy will specifically target our Revenue Funded Organisations through a combination of help and support, funding programmes and facilitated training and information sharing.

We also intend to raise awareness through a combination of: partnerships and collaborations; involvement in relevant networks; creating and facilitating opportunities to engage with the issues; and advocating for the role of the arts in social change.

Whilst going beyond purely environmental issues, we see our Sustainable Development Policy as an agent for change in improving environmental awareness and performance amongst those we fund. And in so doing enabling us to fully play our part in helping deliver the Welsh Government's vision contained in the Future Generations Bill.

*Nicholas Capaldi*  
Accounting Officer

11 July 2014

*Professor Dai Smith*  
Chairman

11- July 2014

## Remuneration Report

The Council remunerates its entire staff, with the exception of the Chairman and Chief Executive, in accordance with an agreed pay and grading system maintained by the Human Resources Department. A Job Evaluation Policy is in place, in accordance with which staff may appeal the grading of posts. The terms of appointment of the Chairman and Chief Executive are agreed with the Welsh Government.

Each year, in consultation with the recognised trade union, a pay remit is produced and submitted to the Welsh Government for approval. The resultant pay and conditions package is binding on the whole of the Council until the next round of negotiation. Increases under the pay remit are dependent upon performance established by the Council's system of personal development reviews.

With the approval of the Charity Commission the Chairman is remunerated at a rate determined by the Welsh Government which reflects a minimum time commitment to Council business. Annual increases of the Chairman's salary are also advised by the Welsh Government but he receives no bonus payments and is not a member of the pension scheme.

The Chief Executive's remuneration consists of a basic salary plus an annual bonus. Annual bonuses are recommended to Council by the Remuneration Committee in consideration of the performance of the Chief Executive against a set of predetermined objectives. A percentage of the bonus, as advised by the Welsh Government, is consolidated into the Chief Executive's salary and the remainder is paid as a non-consolidated award. In the absence of guidance from the Welsh Government in respect of changes to the Chief Executive's salary, the Remuneration Committee was unable to determine whether an increase could be paid during the year. As a result the Chief Executive did not receive an increase or a non-consolidated bonus in respect of 2013-14.

Council members are appointed by the Welsh Ministers for a period of three years and may be re-appointed for a further three year period. The current Chairman, Professor Dai Smith, was appointed as a Council member on 1 April 2004 but took over the chairmanship on 1 April 2006. The Minister for Culture, Sport and the Welsh Language subsequently appointed Professor Smith for a term of three years from 1 April 2007 until 31 March 2010, the Heritage Minister renewed his appointment for a further three years to 31 March 2013 and the Housing, Regeneration and Heritage Minister has announced that Professor Smith will continue to serve as chairman until 31 March 2016. The Chief Executive and Directors are all employed on permanent contracts on the Council's standard terms and conditions.

Having successfully completed a probationary period of six months, the Chief Executive and Directors are entitled to thirteen weeks' notice of termination of employment.

The dates of commencement of employment are: Professor Dai Smith (Chairman) 1 April 2006; Nicholas Capaldi (Chief Executive) 15 September 2008; David Alston (Director of Arts) 1 July 2005; Katherine Davies (Director of Investment and Funding Services from 1 February 2012) 24 August 1998; Diane Hebb (Director of Engagement and Participation from 1 February 2012) 13 January 1992; Siân Tomos (Director of Enterprise and Regeneration from 1 February 2012) 3 May 1994; and Hywel Tudor (Director of Finance and Resources) 21 January 2002.

The Chief Executive and Directors are responsible for directing the Council's activities. Their actual emoluments and pension benefits were as shown in the following tables.

The figures within this Remuneration Report have been audited.

This year, for the first time, the Remuneration Report must include a single total figure of remuneration. Prior year comparatives have been provided for 2012-13. This is a different way of presenting the remuneration for each individual for the year. The table used is similar to that used previously, and the salary element is unchanged. The amount of pension benefits for the year which contributes to the single total figure is calculated in a new way, similar to the method used to derive pension values for tax purposes, and is based on information received from the actuary of the Arts Council Retirement Plan 1994.

The value of pension benefits is calculated as follows:

(real increase in pension\* x 20) + (real increase in any lump sum) – (contributions made by member)

\*excluding increases due to inflation or any increase or decrease due to a transfer of pension rights

This is not an amount which has been paid to an individual by the Council during the year, it is a calculation which uses information from the pension benefit table. These figures can be influenced by many factors, e.g. changes in a person's salary, whether or not they choose to make additional contributions to the pension scheme from their pay, and other valuation factors affecting the pension scheme as a whole.

The single total remuneration figures were:

Name and Position	Emoluments <sup>1</sup> band	2014		2013		
		Pension benefits £000	Single total remuneration £000	Emoluments <sup>1</sup> band	Pension benefits £000	Single total remuneration £000
Nicholas Capaldi <i>Chief Executive</i>	90-95	22	115-120	90-95	21	110-115
David Alston <i>Director of Arts</i>	65-70	22	90-95	65-70	15	80-85
Katherine Davies <i>Director of Investment and Funding Services</i>	55-60	37	95-100	50-55	51	100-105
Diane Hebb <i>Director of Engagement and Participation</i>	55-60	27	80-85	50-55	31	80-85
Siân Tomos <i>Director of Enterprise and Regeneration</i>	55-60	32	85-90	50-55	20	70-75
Hywel Tudor <i>Director of Finance and Resources</i>	65-70	24	90-95	65-70	12	75-80

<sup>1</sup> Emoluments – Guidance has not yet been issued by the Welsh Government in respect of Chief Executives' entitlement to a performance-related non-consolidated award for 2013/14. The other Directors have no entitlement to performance-related awards.

Name and Position	2014	2014	2014	2013	2014
	Real increase in pension and related lump sum at age 65 £000	Total accrued pension at age 65 as at 31/03/14 and related lump sum £000	Cash Equivalent <sup>2</sup> Transfer Value at 31/03/14 £000	Cash Equivalent Transfer Value at 31/03/13 £000	Real increase <sup>3</sup> in Cash Equivalent Transfer Value £000
Nicholas Capaldi <i>Chief Executive</i>	Pension 0-2.5 Lump sum 2.5-5	Pension 5-10 Lump sum 15-20	91	77	12
David Alston <i>Director of Arts</i>	Pension 0-2.5 Lump sum 0-2.5	Pension 5-10 Lump sum 15-20	124	104	18
Katherine Davies <i>Director of Investment and Funding Services</i>	Pension 0-2.5 Lump sum 5-7.5	Pension 15-20 Lump sum 55-60	263	243	16
Diane Hebb <i>Director of Engagement and Participation</i>	Pension 0-2.5 Lump sum 2.5-5	Pension 5-10 Lump sum 25-30	145	129	14
Siân Tomos <i>Director of Enterprise and Regeneration</i>	Pension 0-2.5 Lump sum 2.5-5	Pension 10-15 Lump sum 40-45	209	190	16
Hywel Tudor <i>Director of Finance and Resources</i>	Pension 0-2.5 Lump sum 0-2.5	Pension 10-15 Lump sum 30-35	185	168	15

**2 Cash Equivalent Transfer Values** - A Cash Equivalent Transfer Value (CETV) is the actuarially assessed capitalised value of the pension scheme benefits accrued by a member at a particular point in time. The benefits valued are the member's accrued benefits and any contingent spouse's pension payable from the scheme. A CETV is a payment made by a pension scheme or arrangement to secure pension benefits in another pension scheme or arrangement when the member leaves a scheme and chooses to transfer the benefits accrued in their former scheme. The pension figures shown relate to the benefits that the individual has accrued as a consequence of their total membership of the pension scheme, not just their service in a senior capacity to which disclosure applies. The figures include the value of any pension benefit in another scheme or arrangement which the individual has transferred to the Arts Council Retirement Plan 1994. They also include any additional pension benefit accrued to the member as a result of their purchasing additional pension benefits at their own cost. CETVs are calculated within the guidelines and framework prescribed by the Institute and Faculty of Actuaries and do not take account of any actual or potential reduction to benefits resulting from Lifetime Allowance Tax which may be due when pension benefits are drawn.

**3 Real increase in CETV** - This reflects the increase in CETV effectively funded by the employer. It does not include the increase in accrued pension due to inflation, contributions paid by the employee (including the value of any benefits transferred from another pension scheme or arrangement) and uses common market valuation factors for the start and end of the period.

Following an amendment to the Council's Royal Charter, and with the approval of the Charity Commission, since 1 April 2004 the Chairman has been paid for his services. Other Council and Committee members are not paid for their services. An aggregate amount of £15,477 (2012-13: £9,801) was reimbursed to 14 (2012-13: 12) Council members for travel and subsistence costs incurred on Council business. The aggregate amount allocated to Lottery Distribution activities was £6,183 (2012-13: £4,066).



The total actual emoluments of the Chairman and Chief Executive were made up of:

	<b>2014</b>	2013
	<b>£</b>	£
<b>Chairman</b>		
Salary	<b>43,810</b>	43,810
<b>Chief Executive</b>		
Salary	<b>93,380</b>	93,380
Employer's pension contribution	<b>16,155</b>	16,155
	<b>109,535</b>	109,535

Reimbursed travel and subsistence expenses incurred and defrayed whilst on Council business:

Chairman	<b>3,129</b>	2,882
Chief Executive	<b>8,744</b>	8,283

33.96 per cent (2012-13: 33.96 per cent) of the Chairman's and Chief Executive's emoluments are charged in these financial statements and the remainder to general activities.

The median annual remuneration (full time equivalents) at 31 March was (whole Council):

	30,000	30,000
--	--------	--------

The ratio between the median annual remuneration and the annual remuneration of the highest paid member of staff was (whole Council):

	1:3.12	1:3.12
--	--------	--------

Compensation schemes – exit packages (whole Council):

Exit package cost band	Number of compulsory redundancies		Number of other departures agreed		Total number of exit packages by cost band	
	2013-14	2012-13	2013-14	2012-13	2013-14	2012-13
<£9,999	-	-	-	-	-	-
£10,000 to £24,999	-	1	-	-	-	1
£25,000 to £49,999	-	-	-	-	-	-
£50,000 to £99,999	-	-	-	-	-	-
Total number of exit packages	-	1	-	-	-	1
Total cost (£000)	-	16	-	-	-	16

Redundancy costs were paid in accordance with the provisions of the Council's redundancy policy. The Council usually pays exit costs when employment ends but provides for the exit costs in full at the point when there is sufficiently detailed information to do so.

All 'other departures agreed' related to requests for redundancy where, in accordance with the Council's redundancy policy, the employees' posts either disappeared in the new structure or were filled by other employees who would otherwise have been compulsorily redundant. There is no difference in the payment entitlements of volunteers and those who are compulsorily redundant.

The Remuneration Committee members who served since 1 April 2013 were:

Professor Dai Smith (Council member); Margaret Jervis MBE DL (Council member); and Dr John Geraint (Council member).

*Nicholas Capaldi*  
Accounting Officer

11 July 2014

*Professor Dai Smith*  
Chairman

11 July 2014

## Statement of Council's and the Accounting Officer's responsibilities

Under Section 35 of the National Lottery etc. Act 1993 (as amended) the Council is required to prepare for each financial year a statement of accounts for its Lottery distribution activities in the form and on the basis determined by the Secretary of State for Culture, Media and Sport. The accounts are prepared on an accruals basis and must give a true and fair view of the state of affairs of the Council and of its income and expenditure, changes in equity and cash flows for the financial year.

In preparing the accounts, the Accounting Officer is required to comply with the requirements of the Government Financial Reporting Manual and in particular to:

- observe the Accounts Direction issued by the Secretary of State for Culture, Media and Sport, including the relevant accounting and disclosure requirements, and apply suitable accounting policies on a consistent basis;
- make judgements and estimates on a reasonable basis;
- state whether applicable accounting standards as set out in the Government Financial Reporting Manual have been followed, and disclose and explain any material departures in the financial statements; and
- prepare the financial statements on a going concern basis.

The Principal Accounting Officer for the Welsh Government has designated the Chief Executive as the Accounting Officer of the Council. The responsibilities of an Accounting Officer, including responsibility for the propriety and regularity of the public finances for which the Accounting Officer is answerable, for keeping proper records and for safeguarding the Council's assets, are set out in the Welsh Government's Accounting Officers' Memorandum issued by HM Treasury.

*Nicholas Capaldi*  
Accounting Officer

11 July 2014

*Professor Dai Smith*  
Chairman

11 July 2014

## Annual Governance Statement

This governance statement is the personal responsibility of me, Nicholas Capaldi, the Arts Council of Wales' Accounting Officer and Chief Executive. It sets out the governance arrangements of the Arts Council of Wales. It also describes how I have discharged my responsibilities for ensuring that we conduct our business, in respect of both exchequer and lottery activity, in accordance with the law. This includes providing the necessary assurances that we are adhering to proper standards and establishing the necessary safeguards to protect the use of public money. I explain how these funds are properly accounted for, and used economically, efficiently and effectively to support the delivery of our plans and priorities.

### About the Arts Council of Wales

The Arts Council of Wales – Cyngor Celfyddydau Cymru – was established by Royal Charter on 30 March 1994, and exists to support and develop the arts in Wales. It does so for the benefit of people throughout Wales, and to support Welsh art internationally.

We are also a Welsh Government Sponsored Body, a National Lottery Distributor, and a registered charity (number 1034245).

Our Royal Charter sets out our objectives. They are to:

- develop and improve the knowledge, understanding and practice of the arts;
- increase the accessibility of the arts to the public; and,
- work through the Welsh and English languages.

We also work with other public bodies in Wales, and with the other Arts Councils in the UK, to achieve these aims. You can find a copy of our Royal Charter on our website.

We operate within a carefully prescribed and regulated environment. The Arts Council of Wales is accountable to the Welsh Government's Minister for Culture and Sport. We have to operate within a framework that sets out the terms and conditions under which Welsh Ministers provide our grant-in-aid funding, and how we are able to use this funding.

Along with other public bodies in Wales, we also have to operate within the guidance contained in Managing Welsh Public Money. The activities we carry out in connection with our Collectorplan scheme and Artists Loans scheme are subject to the Consumer Credit Act and guidance issued by the Financial Conduct Authority.

We are a distributor of Lottery funds which, under the National Lottery etc. Act 1993 (as amended), means we are accountable to the UK's Secretary of State for Culture, Media and Sport. Our financial directions are issued by the Secretary of State, and our policy directions by the Welsh Ministers. These set out how we must operate in respect of Lottery distribution activities.

We have to account for lottery distribution activities separately from the rest of our activities, and have appropriate arrangements in place to ensure we produce two sets of published financial statements. Our Lottery Distribution accounts are audited on behalf of the Comptroller and Auditor General by the Wales Audit Office. The Wales Audit Office also audits our General Activities account on behalf of the Auditor General for Wales.

As a charity we have to ensure that we comply with the requirements of the Charities Acts 1960, 2006 and 2011, and follow guidance issued by the Charity Commission.

We have designed our systems and processes to take account of these various responsibilities. Within these frameworks we make independent decisions regarding the strategic direction of the organisation, grant funding, and other financial decisions.

Should the need arise, the Public Services Ombudsman for Wales, the Parliamentary Commissioner for Administration, the Charity Commission, the National Audit Office, and the Wales Audit Office are all able to investigate the Council's affairs.

## Our Governance arrangements

We are governed by a Board of Trustees – Council – which currently consists of a Chair and thirteen members (fourteen up to 31 March 2014), one of whom is appointed as Vice-Chair. Since March 2013 the Welsh Government's Minister for Culture and Sport has been responsible for appointing our Trustees, each of whom brings specific expertise and knowledge to the oversight and development of our activities.

Appointments are usually for a three year term, renewable a maximum of twice. The Chair of Council is a remunerated position; rates are set annually by the Welsh Government. All other members provide their time and expertise on a voluntary basis, but are reimbursed for out-of-pocket expenses incurred on Council business. A summary is contained in the Remuneration Report.

Council is responsible for the strategic direction and management of our organisation. It is responsible for ensuring, through me as the Chief Executive, that we operate within the policy framework set by the Welsh Government, and that we satisfy the various other accountabilities required of us. The Chair maintains regular contact with the Minister, and the Chief Executive meets officials quarterly to provide updates.

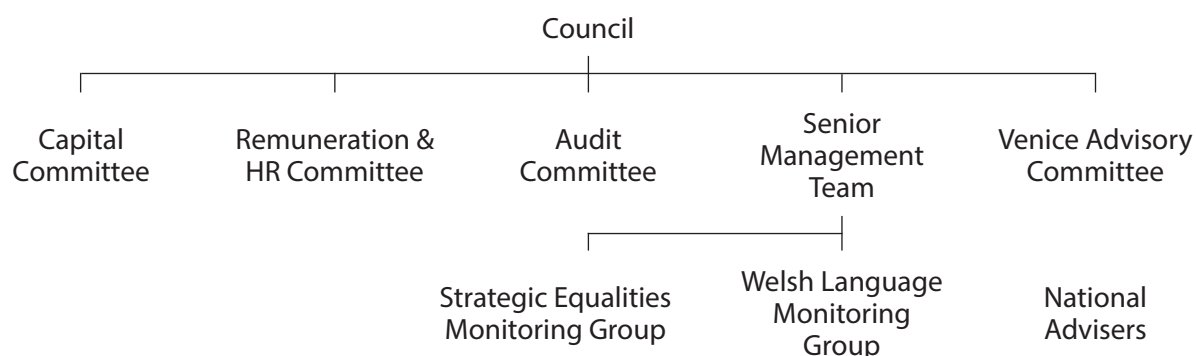
As the ultimate decision making body for the organisation, Council members have retained key decisions on corporate policy, the formulation of our Corporate and Operational Plans, and any major alterations to the terms and conditions of service for staff. They also set the annual budget, decide on the annual allocation of grants to revenue-funded organisations, and approve all grants of over £50,000, or in the case of Lottery funded capital projects over £250,000. Decisions on grants below these thresholds have been delegated to authorised staff, and to the Capital Committee respectively.

To help support its work, Council has appointed three committees to provide specialist advice. These are: Audit; Capital; and Remuneration & Human Resources Committees. It also has an ad hoc advisory committee, to advise on Wales in Venice, and internal monitoring groups who, via the Senior Management Team, assist Council in meeting its responsibilities.

Each committee includes Council members, one of whom acts as chair, and co-opted individuals, and is required to operate under specific terms of reference. Independent committee members are appointed for their specialist skills and experience, through an open selection process. Minutes of each committee meeting are provided to the next available full meeting of Council and each committee is also required to submit an annual report to Council, summarising its work.

All new members of Council and of each Committee undergo an induction process appropriate to their role, and are encouraged to continue their development during their period of appointment.

During the year, Council reviewed and updated the terms of reference of each of the Committees, and in some cases changed membership. In order to provide further assurance, Council expanded the role of the Remuneration and Appointments Committee to include oversight of Human Resources.



The Audit Committee is responsible for providing assurance to Council on the effectiveness of our governance, risk management and internal control arrangements. It reported to Council on the main focus of its work, including our internal governance arrangements, and the development of a Corporate Assurance Framework; the monitoring regime of our portfolio of revenue-funded organisation (RFOs); and the internal audit programme, the majority of reviews of which resulted in substantial assurance or higher.

The Capital Committee is responsible for advising Council on the development of policy on all aspects of capital development, including funding priorities and schemes. It has delegated authority to make funding decisions on lottery capital grants from £50,001 to £250,000. The Committee makes recommendations on larger capital grants to Council.

The Remuneration & HR Committee is responsible for reviewing the performance of the Chief Executive against agreed objectives, and for setting targets for the forthcoming year. It also agrees the level of remuneration for the Chair within the limits determined by the Welsh Ministers. In future, it will have responsibility for monitoring HR matters on behalf of Council.

Neither the Capital nor Remuneration & HR Committees made formal annual reports to Council.

Details of membership of Council and these three committees, together with details of members' attendance at meetings, can be found in the Reference and administrative details section at the beginning of the Trustees' Annual Report.

The Venice Advisory Committee was responsible for developing and overseeing the organisation of our presence at the 2013 Venice Biennale of Art.

The Senior Management Team (SMT) is led by me, supported by five Directors each responsible for particular aspects of our work. The Directors of Arts; Engagement & Participation; and Enterprise & Regeneration make up the Arts Development team, whilst the Directors of Finance & Resources; and Investment & Funding Services make up the Corporate Services Team. I also have a Chief Executive Team. Further details are contained in the Remuneration Report.

We also had two internal monitoring groups, the Strategic Equalities Monitoring Group, and the Welsh Language Monitoring Group, to help drive forward Council's agenda in these areas. The Strategic Equalities Monitoring Group produced a comprehensive Annual Equity Report for 2012-13 which examined our RFO portfolio and our people – staff, Committees and advisers – in detail. The report also cited relevant examples of other work we funded. A copy can be found at <http://www.artscouncilofwales.org.uk/arts-in-wales/engagement-and-participation/equality-and-diversity>. Quarterly updates from both groups were provided to Council.

Our National Advisers are appointed through an open recruitment process and bring specialist knowledge to help support policy development, the assessment of grant applications, and to provide advice to officers.

### We promote values of good governance:

We support Lord Nolan's seven Principles for Public Life and strive to ensure that all of our employees, Trustees, Committee members and National Advisers apply and adhere to these Principles.

To help support this, we have a Code of Best Practice which helps ensure the roles and responsibilities of members and officers are clearly defined. It also contains the expected standards of propriety that members and staff should adhere to. The Code was reviewed and updated during the year. You can find a copy on our website.

We require each member of Council, of each Committee, and all National Advisers and staff to complete an annual declaration of interest statement, and to ensure that changes in circumstances are promptly notified. The register of interests of Members of the Council, Committees and National Advisers is available for public inspection, by appointment, at each of the Council's offices during normal working hours.

Written reports are circulated in advance of each Council and Committee meeting, for consideration by members, with tabled items and verbal reports only accepted in exceptional circumstances. You can find copies of the agenda and minutes of our Council meetings on our website.

As part of our commitment to improving our performance, we are keen to learn from other comparable public bodies. Working with Higher Education Funding Council for Wales, we were the first Welsh Government Sponsored Bodies to hold reciprocal visits for the Chairs of Audit to attend each other's Audit Committee as observers.

Although the Corporate Governance code issued by HM Treasury does not directly apply to Arts Council of Wales, as Accounting Officer I am satisfied that the arrangements we have in place reflect good practice. I also believe that the Arts Council has complied with the principles of accountability, effectiveness, and leadership expressed within the Treasury's Code, in so far as they are relevant to Welsh Government Sponsored Bodies and Lottery Distributors. Council endorses this view.

### We take informed decisions

The decisions taken by our Council and Committees are informed by advice provided by staff of the Arts Council. Papers and reports produced by officers are expected to show clearly all the relevant information that is needed to inform decisions. In the rare instances where the information provided does not meet the required standards, the paper is rejected, and a replacement commissioned. Where appropriate, advice from officers is supplemented with specialist advice from our National Advisers, and where relevant with specialist expert advice and legal opinions. Council will continue to ensure that it has sufficient time to properly consider and debate policy and the future direction of the organisation.

Council was content with the timeliness and quality of data and information provided for its use, and that the information provided in respect of grant funding was reliable. The systems used to provide the information on grants are reviewed annually as part of the internal audit programme.

Key policy proposals are put out to public consultation. Responses and feedback further inform discussions at Council before policies are finalised.

### Matters considered by Council during the year

Council met six times during 2013-14 to discharge its responsibilities. In total the fifteen members attended on 69 out of a possible 90 occasions. Satisfactory explanations of absence were received in all cases. Details of individual attendance can be found at the beginning of the Trustees' Annual Report.

Creativity and the Arts, our arts development strategy, sets out the key arts challenges in the next few years, and forms the basis of the 2013-2018 Corporate Plan. The development of the strategy was informed by a series of open meetings – Sgwrs Gelfyddydol – with stakeholders and other interested parties. Members of Council were actively involved in driving forward this key piece of work.

As part of its governance responsibilities, Council received regular financial monitoring reports; updates on key areas of performance including the Operational, Strategic Equalities and Welsh Language Plans; and monitoring reports on our portfolio of RFOs. Satisfactory progress was made on most areas, but regrettably we were unable to retain our Investors in People accreditation. We intend to re-apply in the next year.

Regular updates were provided on strategically important projects, including the high profile, and very successful, WOMEX13 and Venice 2013 projects. There were also presentations from our Portfolio Managers, from some of the National Companies in the RFO portfolio, and from Coreo Cymru, the creative producer for dance in Wales.

Three RFOs experienced serious difficulties during the year. Council considered reports and recommendations from officers and specialist advisers in connection with these organisations. In certain cases, Council insisted on significant changes in the organisations, as a condition of continued funding, in order to try and safeguard their futures. These organisations will all continue to be the subject of detailed monitoring until such time as we feel confident that they have stabilised and are operationally sustainable.

Following the introduction of our new organisational structure in May 2012, we commissioned surveys of our external customers and stakeholders, and of our staff to help inform an initial review of the effectiveness of the new arrangements. During 2014-15 we will be considering where further work is needed, and responding accordingly.

Council's annual self-assessment review concluded it was satisfied that the vast majority of its indicators of effectiveness had once again been met, and that it was content with progress made during the year, and with the overall effectiveness of the organisation. Allied to this, and as part of its commitment to excellence and continual improvement, Council intends to prioritise, over the coming year, policy and its enactment by deepening its relationship with SMT and other key staff, and further improving the alignment of strategy and budget setting.

## We provide funding to third parties

A key activity of the organisation is the distribution of funding to the arts sector in Wales. We are a major distributor of funding – from the Welsh Government, the National Lottery and other sources, including European funds – and take such responsibility very seriously.

We have developed appropriate systems and procedures to support this key activity. Our grant making and monitoring processes are reviewed annually by our internal auditors to ensure they remain fit for purpose. The Wales Audit Office also examines our grant making activities each year. All recommendations made by our both internal and external auditors are monitored by our Audit Committee to ensure they are implemented on a timely basis.

Decisions to award an organisation Revenue Funded Organisation (RFO) status are taken by Council based on the advice of, and supported by, rigorous assessments carried out by officers.

Regular reports showing the risk assessment of each of our annually funded RFOs are produced for Council. These are supported by a report setting out the key themes that emerged from the series of annual review meetings held with each RFO.

As indicated above, when necessary we take a pro-active approach with organisations that run into difficulties, and invest time and energy to help them resolve matters of concern.

We publish annual guidelines for each of our Lottery funded grant programmes. You can find details on our website.

We have open and transparent application processes for all of our grant funding programmes, and rigorous assessment, decision making, and monitoring processes for all of the funding we award to artists and arts organisations.

We take a risk-based approach to our assessment of applications and monitoring of grants awarded. We use information collected from grant recipients as part of our monitoring procedures to ensure that the stated outcomes for which we provided funding were, in the end, actually achieved.

Council takes fraud, corruption and maladministration very seriously and has policies to prevent, and deal with, such occurrences, including Whistle-blowing and Anti-fraud policies.

A full list of grants offered during the financial year can be found in the annex to this Report and Financial Statements.



## Our approach to risk management

Council takes a considered view of risk in line with its responsibilities both as a publicly-funded body and the nature of the sector it serves.

It recognises that any ambitious developmental strategy has to accept the potential of some risk of failure to achieve policies, aims and objectives. Our aim is to promote a more innovative, less risk-averse culture in order that we can support artists, organisations and projects to deliver our objectives.

We need to balance our duty to innovate with the ever-increasing need to maximise the benefits of our investment for the sector and for the public. We need to take appropriate but considered risks on occasions, and to acknowledge that there might be occasional failures. However, we would not behave recklessly, nor would we wilfully squander public money nor endanger our reputation for prudence.

We have a system of internal control which has been designed to identify and prioritise the risks that could prevent us achieving Council's policies, aims and objectives. It evaluates the likelihood of the risks being realised, considers the impact should they occur, and seeks to manage them efficiently, effectively and economically. However, we recognise our system of internal control can only manage risk to a reasonable and appropriate level, and can therefore only provide reasonable and not an absolute assurance of effectiveness.

We are always looking to improve our internal control systems, to ensure they help us achieve our funding and strategic goals. A key initiative which came to fruition during the year was the development and implementation of a Corporate Assurance Framework, overseen by our Audit Committee. The framework is used to identify the robustness of the underlying controls and assurance processes used to identify and manage key strategic risks. Any aspects that need strengthening are highlighted so that appropriate action can be taken.

## Key risks facing the Arts Council

Looking ahead, there are, however, a number of key risks facing us in the next year or so.

The most significant strategic risk in the immediate future is the impact of cuts to public expenditure and the potential impact this may have on the wider arts sector. Our own budgets are under pressure. We have had to reduce the level of annual revenue funding to our RFO portfolio, as well as finding further savings in our own running costs. Local Authorities also have to take difficult decisions and there is growing evidence that the level of support they have previously provided to the arts sector will suffer. This could have serious consequences for the arts infrastructure across Wales. We are closely monitoring the situation and, where we are able to, will address issues where we are a key funder, or where we can have direct influence.

We have two large Lottery funded capital projects in progress. Both, for differing reasons, have experienced difficulties during the year, and are being closely monitored with the help of independent specialists using our rigorous monitoring procedures. Each of the other capital projects we are involved in is also being closely monitored.

The sharp increase in our Lottery income in recent years presented challenges in terms of increasing the level of commitments, with a resultant increase in the level of our balances held within the National Lottery Distribution Fund. We have begun to address this, but we are now beginning to see a reduction in income levels. Although manageable currently, if this proves to be a sustained downward trend we will need to re-assess our strategic priorities for grant awards for the next few years. We are closely monitoring the situation.

Earlier in the year our Chair was invited to lead a review into the state of arts education in Welsh schools. The Welsh Government accepted the main recommendations in the Arts & Education in the Schools of Wales report in March 2014, and we look forward to playing a significant role in its implementation. The scale of the changes proposed is ambitious and it is likely that the scale and complexity of the programme needed will involve us in a number of major developments. We welcome the opportunity, but also recognise the need to manage carefully the many risks such an initiative will bring.

Later this year the Welsh Government is expected to introduce its Future Generations Bill and its commitment to sustainability duty. We have preparatory work underway to ensure we are able to fully discharge our duties when they take effect in April 2015.

## Security of data

We hold large amounts of data, and treat our obligations under the Data Protection Act seriously. Our ICT systems and controls ensure that the security of data is tightly controlled. We regularly assess our security arrangements and have taken steps to make them more robust. We will continue to monitor them closely.

Neither the high level review over ICT controls carried out by our external auditors, nor our programme of internal audit reviews carried out during the year, highlighted any matters of concern in this area. To the best of my knowledge and belief, no loss of data occurred during the year.

## Ministerial directions

As a Welsh Government Sponsored Body we are subject to non-statutory instruments, containing appropriate directions. No Directions were issued to us during the year, nor were we issued with any Ministerial Directions in respect of our Lottery activities.

## Control issues identified during the year

Our internal audit service is provided by Deloitte LLP under the guidance of a nominated Head of Internal Audit, working to the Public Sector Internal Audit Standards.

Audit Committee agrees a programme of reviews covering the period of appointment of our internal auditors. Priorities for each year are reviewed annually, and contain audits of key business activities, as well as examining key areas of potential risk to the organisation. The reviews are designed to provide assurance and to assist management by identifying improvements where they are considered necessary.

Ten internal audit reviews were carried out during the year. Of these one was the annual follow up review of previous recommendations and three were advisory reviews. The remaining six reviews resulted in either substantial or full levels of assurance. All recommendations raised by internal audit are reported to Audit Committee which monitors them to ensure appropriate action is taken on a timely basis.

The internal auditors concluded that their overall assessment of the review of Corporate Governance provided full assurance and in respect of risk management, substantial assurance.

The internal auditors provided the following opinion on the adequacy and effectiveness of the Council's arrangements in their Annual Report:

"Based on the work we have undertaken during the year, we are able to conclude that the Arts Council of Wales (the Arts Council) has a basically sound system of internal control, which should provide substantial assurance regarding the achievement of the Arts Council's objectives."

The findings of the National Audit Office and Wales Audit Office's annual audits are reported in an Additional Assurance Report and Management Letter addressed to Council. A copy is provided to the Permanent Secretary of the Welsh Government. The Audit Committee considers the findings and monitors them to ensure appropriate action is taken on a timely basis.

## Overall assessment of governance and internal control

In my opinion, the Arts Council of Wales' systems of governance and internal control are sufficient to enable me to discharge my responsibilities as Accounting Officer.

*Nicholas Capaldi*  
Accounting Officer

11 July 2014

*Professor Dai Smith*  
Chairman

11 July 2014

# The Certificate and Report of the Comptroller and Auditor General to the Houses of Parliament and the Members of the National Assembly for Wales

I certify that I have audited the financial statements of the Arts Council of Wales Lottery Distribution Account for the year ended 31 March 2014 under the National Lottery etc. Act 1993. The financial statements comprise: the Statements of Comprehensive Net Expenditure, Financial Position, Cash Flows, Changes in Equity; and the related notes. These financial statements have been prepared under the accounting policies set out within them. I have also audited the information in the Remuneration Report that is described in that report as having been audited.

## Respective responsibilities of the Council, Accounting Officer and auditor

As explained more fully in the Statement of Council's and the Accounting Officer's Responsibilities, the Arts Council of Wales and the Accounting Officer are responsible for the preparation of the financial statements and for being satisfied that they give a true and fair view. My responsibility is to audit, certify and report on the financial statements in accordance with the National Lottery etc. Act 1993. I conducted my audit in accordance with International Standards on Auditing (UK and Ireland). Those standards require me and my staff to comply with the Auditing Practices Board's Ethical Standards for Auditors.

## Scope of the audit of the financial statements

An audit involves obtaining evidence about the amounts and disclosures in the financial statements sufficient to give reasonable assurance that the financial statements are free from material misstatement, whether caused by fraud or error. This includes an assessment of: whether the accounting policies are appropriate to the Arts Council of Wales Lottery Distribution Account's circumstances and have been consistently applied and adequately disclosed; the reasonableness of significant accounting estimates made by the Arts Council of Wales; and the overall presentation of the financial statements. In addition I read all the financial and non-financial information in the Trustees' Annual Report and Strategic Report to identify material inconsistencies with the audited financial statements and to identify any information that is apparently materially incorrect based on, or materially inconsistent with, the knowledge acquired by me in the course of performing the audit. If I become aware of any apparent material misstatements or inconsistencies I consider the implications for my certificate.

I am required to obtain evidence sufficient to give reasonable assurance that the expenditure and income recorded in the financial statements have been applied to the purposes intended by Parliament and the financial transactions recorded in the financial statements conform to the authorities which govern them.

### Opinion on regularity

In my opinion, in all material respects the expenditure and income recorded in the financial statements have been applied to the purposes intended by Parliament and the financial transactions recorded in the financial statements conform to the authorities which govern them.

### Opinion on financial statements

In my opinion:

- the financial statements give a true and fair view of the state of the Arts Council of Wales Lottery Distribution Account's affairs as at 31 March 2014 and of the net expenditure for the year then ended; and
- the financial statements have been properly prepared in accordance with the National Lottery etc. Act 1993 and Secretary of State directions issued thereunder with the approval of HM Treasury.

### Opinion on other matters

In my opinion:

- the part of the Remuneration Report to be audited has been properly prepared in accordance with Secretary of State directions made with HM Treasury approval under the National Lottery etc. Act 1993; and
- the information given in the Trustees' Annual Report and Strategic Report for the financial year for which the financial statements are prepared is consistent with the financial statements.

### Matters on which I report by exception

I have nothing to report in respect of the following matters which I report to you if, in my opinion:

- adequate accounting records have not been kept or returns adequate for my audit have not been received from branches not visited by my staff; or
- the financial statements and the part of the Remuneration Report to be audited are not in agreement with the accounting records and returns; or
- I have not received all of the information and explanations I require for my audit; or
- the Governance Statement does not reflect compliance with HM Treasury's guidance.

### Report

I have no observations to make on these financial statements.

*Sir Amyas C E Morse KCB*  
Comptroller and Auditor General

15 July 2014

National Audit Office  
157-197 Buckingham Palace Road  
Victoria  
London SW1W 9SP

## Statement of Comprehensive Net expenditure for the year ended 31 March 2014

	Notes	£000	2014 £000	£000	2013 £000
<b>Expenditure</b>					
Management and administration:					
Staff costs	2	1,039		952	
Other operating costs	4a	612		607	
			<b>1,651</b>		<b>1,559</b>
Irrecoverable grants:					
Increase/(Decrease) in provision for doubtful debts			<b>3</b>		<b>2</b>
Expenditure on the arts:					
Grant commitments made (hard) <sup>1</sup>		15,562		12,480	
Less: Lapsed and revoked commitments (hard) <sup>1</sup>		(203)		(379)	
Net grant commitments made (hard) <sup>1</sup>	9b		<b>15,359</b>		12,101
Delegated distributors	8, 11		<b>1,835</b>		1,200
Other arts awards	5		<b>150</b>		208
Direct costs of grant making	4b		<b>25</b>		11
			<b>17,369</b>		<b>13,520</b>
Statutory transfer to Olympic Lottery Distribution Fund	6		<b>-</b>		<b>1,010</b>
<b>Total expenditure</b>			<b>19,023</b>		<b>16,091</b>
<b>Income</b>					
Share of proceeds from the National Lottery	6		<b>16,892</b>		19,355
Investment income on balances in the National Lottery Distribution Fund	6		<b>78</b>		103
Interest receivable			<b>7</b>		6
Grants recoverable			<b>67</b>		21
<b>Total income</b>			<b>17,044</b>		<b>19,485</b>
Net (expenditure)/income			<b>(1,979)</b>		<b>3,394</b>
<b>Other Comprehensive Income</b>					
Net unrealised gain/(loss) on the revaluation of investment in the National Lottery Distribution Fund	6		<b>(290)</b>		<b>2</b>
<b>Total Comprehensive (Expenditure)/Income for the year</b>			<b>(2,269)</b>		<b>3,396</b>

1 See note 1d for details of the different categories of grant commitments.

There are no discontinued activities and there have been no acquisitions during the year.

There are no gains or losses other than those shown above.

The notes on pages 52 to 63 form part of these financial statements.

## Statement of Financial Position as at 31 March 2014

	Notes	31 March 2014 £000	31 March 2013 £000
<b>Non-current assets:</b>			
Trade and other receivables	7a	150	150
<b>Current assets:</b>			
Financial assets:			
Investments – balance held in the National Lottery Distribution Fund	6	20,264	20,601
Trade and other receivables	7b	77	71
Cash and cash equivalents	10c	1,308	1,739
<b>Total current assets</b>		<b>21,649</b>	<b>22,411</b>
<b>Total assets</b>		<b>21,799</b>	<b>22,561</b>
<b>Trade payables and other current liabilities – amounts falling due within one year:</b>			
Trade and other payables	8	(262)	(79)
Other liabilities:			
Delegated distributors	8	(462)	(416)
Provision for grant commitments (hard) <sup>1</sup>	8, 9b	(11,713)	(8,361)
<b>Total payables and other current liabilities</b>		<b>(12,437)</b>	<b>(8,856)</b>
<b>Non-current assets plus net current assets</b>		<b>9,362</b>	<b>13,705</b>
<b>Trade payables and other liabilities – amounts due after more than one year:</b>			
Provision for grant commitments falling due after more than one year (hard) <sup>1</sup>	9b	(1,436)	(3,510)
<b>Assets less liabilities</b>		<b>7,926</b>	<b>10,195</b>
<b>Equity/Reserves:</b>			
Net Expenditure account		<b>7,926</b>	<b>10,195</b>

<sup>1</sup> See note 1d for details of the different categories of grant commitments

The notes on pages 52 to 63 form part of these financial statements.

The financial statements were approved by the Arts Council of Wales and signed on its behalf by

Nicholas Capaldi  
Accounting Officer

11 July 2014

Professor Dai Smith  
Chairman

11 July 2014

## Statement of Cash Flows for the year ended 31 March 2014

	Notes	2014 £000	2013 £000
<b>Cash flows from operating activities</b>			
Funds drawn down from the National Lottery Distribution Fund	6	17,017	13,415
Other cash receipts		31	9
Grants paid	9b	(14,081)	(8,306)
Cash paid to and on behalf of employees		(988)	(958)
Other cash payments		(628)	(1,230)
Payments to delegated distributors	8a	(1,789)	(1,225)
<b>Net cash inflow/(outflow) from operating activities</b>	10a	<u>(438)</u>	<u>1,705</u>
<b>Cash flows from investing activities</b>			
Interest received		<u>7</u>	<u>6</u>
<b>Net cash inflow from investing activities</b>		<u>7</u>	<u>6</u>
<b>Net increase/(decrease) in cash and cash equivalents in the period</b>	10b	<u>(431)</u>	<u>1,711</u>

## Statement of Changes in Equity for the year ended 31 March 2014

	2014 £000	2013 £000
Balance at beginning of year	10,195	6,799
Net income/(expenditure) for the year	(2,269)	3,396
<b>Balance at end of year</b>	<u>7,926</u>	<u>10,195</u>

*The notes on pages 52 to 63 form part of these financial statements.*

## Notes forming part of the Financial Statements

### 1 Accounting policies

#### *a Basis of preparation*

These financial statements are prepared under the historical cost convention. They have been prepared in accordance with Section 35 of the National Lottery etc. Act 1993 (as amended by the National Lottery Act 1998) in the form and on the basis determined by the Secretary of State for Culture, Media and Sport.

These financial statements have been prepared in compliance with International Financial Reporting Standards (IFRS).

Under separate Accounts Directions the accounting treatment of general and lottery grants differs significantly so, with due regard to paragraph 359 of the Charity Commission's Statement of Recommended Practice (revised 2005), in the judgment of the Trustees the production of a consolidated account is inappropriate as it would not provide a true and fair view of the application of the Council's resources.

#### *b Recognition of income and expenditure*

All income is accounted for on an accruals basis. All expenditure is accounted for on an accruals basis and has been classified under headings that aggregate all costs related to the category. Where costs cannot be directly attributed to particular headings they have been allocated to activities on a basis consistent with use of the resources.

#### *c General activities*

These financial statements do not cover the Council's general activities, funded mainly by grant-in-aid, for which separate financial statements have been prepared.

#### *d Grant commitments*

A distinction is made in respect of grants made by the Lottery distributors between 'hard commitments' and 'soft commitments'. Hard commitments, which are charged as expenditure in the financial statements, arise when the Council has made a formal offer of grant which (together with appropriate conditions) has been accepted by the recipient. Soft commitments, which are recorded in a note to the financial statements, arise when the Council has agreed in principle to fund a project and made an offer but, at the year end, the offer has not been accepted formally by the recipient.

Hard commitments payable within one year of the year end are recognised in the Statement of Financial Position as current liabilities. Those payable more than one year after the Statement of Financial Position date are shown as such.

#### *e National Lottery Distribution Fund*

Balances held in the National Lottery Distribution Fund remain under the stewardship of the Secretary of State for Culture, Media and Sport. However, the share of such balances attributable to the Council is shown in the accounts at market value and, at the Statement of Financial Position date, has been notified by the Secretary of State for Culture, Media and Sport as being available for distribution by the Council in respect of current and future commitments.

It is appropriate to classify the National Lottery Distribution Fund investments as 'available for sale', being in line with the Department for Culture, Media and Sport accounting policy, and this accounting treatment is appropriate to the Council. The policy is that investments are held at fair value with any unrealised profit or loss recognised through reserves.



*f Pensions*

The Council is an admitted employer of the Arts Council Retirement Plan 1994. The pension scheme provides defined benefits to Council employees. The costs of the Council's contributions are charged to the Statement of Comprehensive Net Expenditure so as to spread the cost of pensions over employees' working lives.

The fund is a defined benefit, multi-employer scheme so the Council is unable to identify its share of the underlying assets and liabilities. The scheme has therefore been accounted for as if it were a defined contribution scheme, in accordance with IAS 19.

The Council also introduced a defined contribution scheme, The People's Pension, effective 1 May 2014, as an alternative option to meet the needs of Auto Enrolment legislation. The scheme is accounted for in accordance with IAS 19.

*g Taxation*

Non-recoverable Value Added Tax arising from expenditure is charged to the Statement of Comprehensive Net Expenditure or capitalised as a fixed asset where applicable.

*h Apportionment of management and administration costs from the General Activities Account*

The Council incurs costs which support both its general activities and lottery distribution functions. In accordance with its Financial Directions the Council apportions indirect costs properly between these two areas of activity with reference to the time spent on, or the consumption of, the relevant resources by the respective activities.

*i Financial Instruments*

Financial assets: Trade receivables and other current assets do not carry any interest and are stated at their nominal value as reduced by appropriate allowances for estimated irrecoverable amounts. Cash and cash equivalents comprises cash in hand and cash at bank and on short term deposit on instant access terms.

Financial liabilities: Trade payables and other current liabilities are not interest bearing and are stated at their nominal value.

**2 Staff costs**

	<b>2014</b>	2013
	<b>£000</b>	£000
Wages and salaries charged to Lottery distribution activity	<b>814</b>	739
Social security costs	<b>73</b>	62
Other pension costs	<b>146</b>	148
Agency costs	<b>6</b>	2
Redundancy payments	<b>-</b>	1
	<b><u>1,039</u></b>	<u>952</u>

The average number of staff (full time equivalents) employed across the whole Council during the year was:

	<b>No</b>	No
Direct delivery of our activities	<b>11</b>	14
Recharged to direct delivery and in support of our operations	<b>65</b>	67
Agency staff	<b>1</b>	-
	<b><u>77</u></b>	<u>81</u>

Based on time apportionments, the average number of staff (full time equivalents) employed on Lottery distribution during the year was:

In support of our operations	<b><u>22</u></b>	<u>23</u>
------------------------------	------------------	-----------

The balance of 55 (2012-13: 58) staff were employed on general activities.

### 3 Pension costs

Most employees are members of the Arts Council Retirement Plan 1994 (ACRP). The fund is a defined benefit scheme. It is also a multi-employer scheme so the Council is unable to identify its share of the underlying assets and liabilities. The scheme has therefore been accounted for as if it were a defined contribution scheme, in accordance with IAS 19.

An independent actuarial valuation of the ACRP normally takes place every three years. The most recent valuation, as at 31 March 2013, came into effect on 1 April 2014. The valuation introduced new contribution rates for the Council in respect of accruing benefits, and also requires a minimum level of payment to be made each year towards the past service deficit, at a rate advised by the scheme actuary. In order to eliminate the deficit, the actuary recommended increased employer contributions over the next 9 years, compared to the 13 years used previously.

On the assumption that the recommended amounts would be paid to the Plan, the actuary's opinion was that the resources of the scheme are likely in the normal course of events to meet in full the liabilities of the scheme as they fall due. The main actuarial assumptions used were: that price inflation would be 2.75 per cent per annum; pay increases would be 1.5 per cent per annum for the first 5 years and 3.5 per cent thereafter; pension increases would be 2.75 per cent per annum on pensions in excess of Guaranteed Minimum Pensions (GMPs); pension increases of deferred pensions would be 2.75 per cent per annum on pensions accrued before April 2009 and 2.5 per cent on pensions accrued after that date, both subject to statutory revaluations; the past service discount rate would be 4.8 per cent per annum and the future service discount rate would be 4.8 per cent per annum.

Contributions by the Council and its employees were:

For staff joining the Plan:	Council		Employees	
	2014	2013	2014	2013
on or before 31 August 2006	<b>19.3 per cent</b>	19.3 per cent	<b>1.5 per cent</b>	1.5 per cent
from 1 September 2006 to 31 March 2010	<b>17.3 per cent</b>	17.3 per cent	<b>3.5 per cent</b>	3.5 per cent
on or after 1 April 2010	<b>14.8 per cent</b>	14.8 per cent	<b>6.0 per cent</b>	6.0 per cent

The Council was also required to contribute a minimum payment of £48,000 towards the deficit during 2013-14.

From April 2014 the Council's contributions on behalf of its employees increased to 22.0 per cent (for those who joined up to 31 August 2006), 20.0 per cent (for those who joined between September 2006 and March 2010), and 17.5 per cent (for those joining from April 2010). The minimum contribution to the deficit increased to £48,700 per annum from April 2014.

The Council also pays 0.2 per cent of pensionable salary in respect of each life assurance only member.

Under Auto Enrolment legislation all eligible employees are required to join a qualifying pension scheme, unless they formally opt out. We introduced a defined contribution scheme, The People's Pension, as an alternative option for employees that were not members of the ACRP.

We auto-enrolled all eligible employees into The People's Pension on 1 May 2014, our official staging date. The Council contributes 4 per cent and the employee 1 per cent. These rates will change in the future, in line with the requirements of the legislation.

#### 4 Costs in support of our operations

##### a Management and administration: Other operating costs

	<b>2014</b>	2013
	<b>£000</b>	£000
Staff related costs	75	62
Organisational review	–	27
Infrastructure	236	249
Lottery promotion	11	13
Office running costs	29	25
Professional fees	88	72
Irrecoverable VAT	79	78
Charge for use of fixed assets	48	41
Auditor's remuneration – Audit <sup>1</sup>	19	17
Auditor's remuneration – Under accrual in previous year	1	–
Internal audit	8	8
Council meetings, including Members' travel and subsistence	18	15
	<b>612</b>	<b>607</b>

1 The audit fee is for audit services and no non-audit services were provided.

Management and administration costs are apportioned between the Council's general activities and Lottery distribution accounts with reference to the time spent on, or the consumption of, the relevant resources by the respective functions. The rates applied differ according to the expenditure heading and geographical region but the average charge to Lottery activities was 39.95 per cent (2012-13: 41.5 per cent).

##### b Expenditure on the arts: Direct costs of grant making

	<b>2014</b>	2013
	<b>£000</b>	£000
Assessors' fees	20	11
Creative Wales Awards – scheme expenses	5	–
	<b>25</b>	<b>11</b>

#### 5 Other arts awards

	<b>2014</b>	2013
	<b>£000</b>	£000
Cross Border Touring	150	150
Beyond Borders awards in association with the PRS Foundation	–	40
<i>Unlimited</i> awards for the London 2012 Cultural Olympiad in association with Arts Council England	–	18
	<b>150</b>	<b>208</b>

**6 National Lottery Distribution Fund**

	<b>2014</b>	2013
	<b>£000</b>	£000
Balance held in the National Lottery Distribution Fund (NLDF) at 1 April	<b>20,601</b>	15,566
Allocation of Lottery proceeds	<b>16,892</b>	19,355
Investment income receivable	<b>78</b>	103
Payments to the Olympic Lottery Distribution Fund	–	(1,010)
Adjustment to previous year's unrealised gain/(loss) on investment in NLDF	–	2
Unrealised loss on investment in NLDF during the year	<b>(290)</b>	–
Drawn down in the year	<b>(17,017)</b>	(13,415)
Balance held in the National Lottery Distribution Fund at 31 March	<b>20,264</b>	20,601

The balance held at 31 March 2014 at the National Lottery Distribution Fund may be subject to change as the audit of the Fund is incomplete. Any adjustments arising from that audit will be reflected in the Council's 2014-15 accounts.

In February 2008 a statutory instrument (SI 2008 No. 255 The Payments into the Olympic Lottery Distribution Fund etc. Order 2008) was passed which allowed for the transfer of up to £1,085,000,000 from the National Lottery Distribution Fund to the Olympic Lottery Distribution Fund in order to meet some of the costs of hosting the 2012 games. This comprises £410,000,000 as originally envisaged when the Government decided to support London's Olympic bid in 2003, and a proposed further £675,000,000 arising from the subsequent budget review.

The Council was committed to contribute up to £3,552,000 in the original bid and this order allowed for the transfer of up to a further £4,509,000.

During 2013-14 there were no further transfers (2012-13: £1,010,000).

**7 Trade and other receivables**

	<b>2014</b>	2013
	<b>£000</b>	£000
<i>a Non-current assets</i>		
<b>Analysis by type</b>		
Other receivables	<b>150</b>	150
<b>Intra-government balances</b>		
Balances with bodies external to government	<b>150</b>	150
<i>b Current assets</i>		
<b>Analysis by type</b>		
Due from the Arts Council of Wales General Activities account	<b>38</b>	64
Grants recoverable	<b>63</b>	28
Less: Specific provision for doubtful debts	<b>(24)</b>	(21)
	<b>77</b>	71
<b>Intra-government balances</b>		
Balances with other central government bodies	<b>38</b>	64
Balances with local authorities	–	3
Balances with bodies external to government	<b>39</b>	4
	<b>77</b>	71

**8 Trade payables and other current liabilities – amounts falling due within one year**

	<b>2014</b>	2013	
	<b>£000</b>	£000	
<i>a Analysis by type</i>			
Trade and other payables:			
Trade payables	–	1	
Due to the Arts Council of Wales General Activities account <sup>1</sup>	<b>243</b>	41	
Accruals and deferred income	<b>19</b>	37	
Sub-total: Trade and other payables	<b>262</b>	79	
Other liabilities:			
Delegated distributors <sup>2</sup>	<b>462</b>	416	
Provision for grant commitments (hard) (note 9b)	<b>11,713</b>	8,361	
Sub-total: Other liabilities	<b>12,175</b>	8,777	
 Total current liabilities	 <b>12,437</b>	 8,856	
 1 The amount due to the Arts Council of Wales General Activities account is made up of:			
Recharges of apportioned costs			
– Staff	<b>136</b>	–	
– Overheads	<b>59</b>	–	
– Charge for use of assets	<b>48</b>	41	
Temporary transfer to cover urgent payments	–	–	
	<b>243</b>	41	
 2 The Council has delegated Lottery funds to Ffilm Cymru Wales (for film) and to Nesta (for Digital Research & Development projects):			
	<b>Ffilm Cymru</b>	<b>Nesta</b>	
	<b>Wales</b>	<b>£000</b>	
	<b>£000</b>	<b>£000</b>	
Undrawn funds at 1 April	<b>416</b>	–	441
Allocation of funds during the year	<b>1,400</b>	<b>435</b>	1,200
	<b>1,816</b>	<b>435</b>	1,641
Drawn down in the year	<b>(1,354)</b>	<b>(435)</b>	(1,225)
Undrawn funds at 31 March	<b>462</b>	–	416
 <i>b Intra-government balances</i>			
Balances with central government bodies	<b>266</b>	101	
Balances with local authorities	<b>3,031</b>	2,200	
Balances with NHS bodies	<b>55</b>	90	
Sub-total: Intra-government balances	<b>3,352</b>	2,391	
Balances with bodies external to government	<b>9,085</b>	6,465	
Total creditors	<b>12,437</b>	8,856	

**9 Grant commitments***a Soft commitments*

	£000	£000	2014 £000	2013 £000
	Capital	Revenue schemes	Total	Total
Soft commitments at 1 April	88	251	339	864
Soft commitments made in the year	2,371	15,707	18,078	11,958
Total grant offers made	2,459	15,958	18,417	12,822
Offers not accepted	-	(25)	(25)	(3)
Soft commitments transferred to hard commitments	(2,420)	(13,142)	(15,562)	(12,480)
Soft commitments at 31 March	39	2,791	2,830	339
<i>b Hard commitments</i>				
Hard commitments at 1 April	6,461	5,410	11,871	8,076
Hard commitments in the year	2,420	13,142	15,562	12,480
Amounts not taken up	(27)	(176)	(203)	(379)
Charged to Statement of Comprehensive Net Expenditure <sup>1</sup>	2,393	12,966	15,359	12,101
Grants paid in the year	(2,239)	(11,842)	(14,081)	(8,306)
Hard commitments at 31 March <sup>2</sup>	6,615	6,534	13,149	11,871
Falling due within one year to:				
Other central government bodies	-	23	23	60
Local authorities	2,424	607	3,031	2,200
NHS bodies	-	55	55	90
Bodies external to government	3,555	5,049	8,604	6,011
	5,979	5,734	11,713	8,361
Falling due after more than one year to:				
Other central government bodies	-	-	-	7
Local authorities	636	164	800	833
NHS bodies	-	-	-	10
Bodies external to government	-	636	636	2,660
	636	800	1,436	3,510
Total	6,615	6,534	13,149	11,871
1 Grants to public bodies			2,141	1,582
Grants to private bodies			13,218	10,519
			15,359	12,101
2 Ageing of hard commitments:				
2013-14	-	-	-	8,361
2014-15	5,979	5,734	11,713	3,423
2015-16	636	673	1,309	87
2016-17	-	127	127	-
	6,615	6,534	13,149	11,871

**10 Cash flow reconciliation**

	<b>2014</b>	2013
	<b>£000</b>	£000
<i>a Reconciliation of net income to net cash flow from operating activities</i>		
Net income/(expenditure)	<b>(2,269)</b>	3,396
Bank interest	<b>(7)</b>	(6)
(Increase)/Decrease in the balance held in the National Lottery Distribution Fund	<b>337</b>	(5,035)
(Increase)/Decrease in trade and other receivables	<b>(6)</b>	(68)
Increase/(Decrease) in trade and other payables and other liabilities	<b>229</b>	(377)
Increase/(Decrease) in provision for grant commitments	<b>1,278</b>	3,795
Net cash inflow/(outflow) from operating activities	<b>(438)</b>	1,705
<i>b Reconciliation of net cash flow to movements in net funds</i>		
Increase/(Decrease) in cash and cash equivalents	<b>(431)</b>	1,711
Increase/(Decrease) in the balance held in the National Lottery Distribution Fund	<b>(337)</b>	5,035
	<b>(768)</b>	6,746
Net funds at 1 April	<b>22,340</b>	15,594
<b>Net Funds at 31 March</b>	<b>21,572</b>	22,340
<i>c Cash and cash equivalents</i>		
Balance at 1 April	<b>1,739</b>	28
Net change in cash and cash equivalent balances	<b>(431)</b>	1,711
Balance at 31 March	<b>1,308</b>	1,739
The following balances at 31 March were held at:		
Commercial banks, instant access deposit and cash in hand	<b>1,308</b>	1,739

**11 Delegated Lottery distributors**

## Ffilm Cymru Wales

A delegation agreement with Ffilm Cymru Wales is in place, and fully operational, for the purpose of the distribution of Lottery funds. The following Lottery distribution information is extracted from the unaudited draft financial statements<sup>1</sup> of Ffilm Cymru Wales for the year ended 31 March 2014:

	£000
Reserves at 1 April 2013	507
Incoming funds: Arts Council of Wales	1,400
Incoming funds: Other	187
Grants and direct expenditure	(1,643)
Operating costs	(363)
Reserves at 31 March 2014	<u>88</u>
Details of grant commitments at 31 March 2014:	
Hard commitments	1,438
Soft commitments	-
	<u>1,438</u>

1 The draft financial statements will be audited in July 2014 and are expected to be approved by the Board in September 2014.

**Other delegated distributors**

Delegation agreements are also in place with Nesta, BBC Cymru Wales, and Literature Wales for the distribution of Lottery funds in support of specific strategic initiatives. There were no transactions with BBC Cymru Wales or Literature Wales during 2013-14. The transactions with Nesta were not material in the context of Nesta's financial statements for the year.

Full lists of the grants administered by Ffilm Cymru Wales and Nesta are included in the annexes to this Annual Report.

**12 Events after the reporting period****Authorisation of these financial statements for issue**

The financial statements were authorised for issue by the Accounting Officer on the same date as the Comptroller and Auditor General certified them.

**13 Financial instruments**

International Financial Reporting Standard 7, *Financial Instruments: Disclosures*, requires disclosure of the role which financial instruments have had during the period in creating or changing the risks the Council's function faces in undertaking its role.

*Liquidity risks* – In 2013-14 £16,892,000 or 99.1 per cent of the Council's Lottery distribution income was derived from the National Lottery (2012-13: £19,355,000 or 99.3 per cent). Of the remaining income £78,000 or 0.5 per cent was derived from investment returns from the balance held with the National Lottery Distribution Fund (2012-13: £103,000 or 0.6 per cent) and £74,000 or 0.4 per cent from other investment income and sundry income (2012-13: £27,000 or 0.1 per cent). The Council does not consider that its Lottery Distribution function is exposed to any significant liquidity risk, and is satisfied that the balance within the National Lottery Distribution Fund and projected future Lottery proceeds are sufficient to meet its hard commitments.



*Interest rate risks* – The financial assets of the Lottery are invested in the National Lottery Distribution Fund, which invests in a narrow band of low risk assets such as government bonds and cash. The Council has no control over the investment of funds in the National Lottery Distribution Fund. Cash and cash equivalents which are drawn down from the Fund to pay grant commitments and operating costs are held in an instant access, variable rate bank account which on average carried an interest rate of 0.38 per cent in the year (2012-13: 0.56 per cent). Surplus daily funds invested in the Public Sector Deposit Fund on average carried an investment return of 0.34 per cent in the year (2012-13: n/a). The cash and cash equivalents balance at the year end was £1,308,000 (2013: £1,739,000). The Council does not consider that its Lottery Distribution function is exposed to significant interest rate risks.

*Foreign currency risk* – The lottery distribution function of the Council is not exposed to any significant foreign exchange risks.

*Cash flow risk* – The Council is not exposed to any significant cash flow risks.

## **14 Related party transactions**

### *Public bodies*

The Council is a Welsh Government sponsored body.

The National Assembly for Wales/Welsh Government is regarded as a related party and details of transactions with the National Assembly for Wales/Welsh Government are given in the separate accounts covering the Council's general activities.

The National Lottery Distribution Fund is administered by the Department for Culture, Media and Sport which is regarded as a related party. During the year the Council had no material transactions with the Department for Culture, Media and Sport other than those shown in the Statement of Comprehensive Net Expenditure.

### *Delegated Lottery distributors*

As disclosed in note 11, Ffilm Cymru Wales, Nesta, BBC Cymru Wales and Literature Wales are delegated distributors of the Council's Lottery funding. During the year the Council had no material transactions with them other than those shown in the Statement of Comprehensive Net Expenditure.

### *Individuals*

Members of Council, staff or other related parties (being close family members) undertook financial transactions (listed below) with the Council in its role as Lottery distributor. Financial transactions with the Council in respect of its general activities are recorded in the separate accounts covering those activities.

### *Council members*

A number of Council members and/or their close family were members of the Boards of Management (or equivalent) or were senior employees of organisations offered Lottery grants or other payments by the Council in 2013-14. In all such cases, in accordance with the Council's Code of Best Practice, the member concerned withdrew from any meeting during discussion of the application.

<b>Member Role</b>	<b>Organisation</b>	<b>Transaction (number)</b>	<b>Total value £</b>	<b>Balance outstanding at 31 March 2014 £</b>
Emma Evans Trustee/Director	Creu Cymru	Grant (3)	364,704	316,687
Dr John Geraint Bursary recipient (family member)	Literature Wales	Grant (2)	105,000	10,000
Margaret Jervis Director of Operations	Valleys Kids	Grant (1)	20,000	Nil
Richard Turner Chairman	South Wales Intercultural Community Arts	Grant (2)	28,893	14,545
Business Consultant	Tanja Râman+dbini industries (TaikaBox)	Grant (3)	44,640	28,500
Business Consultant	Jukebox	Grant (1)	336,683	316,141
Business Consultant	Butetown History & Arts Centre	Grant (1)	240,000	195,000
Alan Watkins Board Member	Clwyd Theatr Cymru	Grant (4)	135,826	114,451
John C Williams Employee	Theatr Iolo	Grant (3)	87,000	6,089
Employee	Cardiff Metropolitan University	Grant (1)	10,800	1,080
Chair	Tanja Râman+dbini industries (TaikaBox)	Grant (3)	44,640	28,500
Board Member	Run Ragged Productions	Grant (1)	28,705	2,870
Prof Gerwyn Williams Employee	Bangor University	Grant (6)	197,612	84,501
Osi Rhys Osmond Trustee	Oriel Q, Narberth	Grant (1)	30,000	16,500
Trustee	Josef Herman Foundation	Grant (1)	21,850	2,188
Employment	Swansea Metropolitan University	Grant (2)	41,375	Nil
Dr Lesley Hodgson Trustee	Merthyr Tydfil Global Village	Grant (1)	5,000	Nil
Dr Kate Woodward Committee member	Aberystwyth University/Aberystwyth Arts Centre	Grant (3)	42,000	37,000
Board member (family member)	Audiences Wales	Grant (1)	10,800	1,080
Employment (family member)	Theatr Genedlaethol Cymru	Grant (2)	106,700	95,000
Marian Wyn Jones Board Member	Canolfan Gerdd William Mathias	Grant (2)	35,000	3,000
Member	Bangor University	Grant (6)	197,612	84,501
Melanie Hawthorne Employment	University of South Wales	Grant (2)	10,130	890

**Staff**

A number of members of staff and/or their family were members of the Boards of Management (or equivalent) or senior employees of organisations who were offered grants or other payments from the Council in 2013-14. In all such cases, in accordance with the Council's Code of Best Practice, the member of staff took no part in any discussion of the application or decision-making meeting.

<b>Staff member Role</b>	<b>Organisation</b>	<b>Transaction (number)</b>	<b>Total value £</b>	<b>Balance outstanding at 31 March 2014 £</b>
Nathalie Camus Board Member (family member)	Mostyn Gallery	Grant (3)	109,666	79,666
Kath Davies Employment (family member)	St David's Hall	Grant (4)	206,263	174,263
Scholarship (family member)	Ballet Cymru	Grant (3)	93,140	62,306
Michael Goode Advisory Panel member Secretary	It's My Shout Cardiff Arts Collective	Grant (2) Grant (1)	57,172 16,485	28,985 1,648
Eluned Hâf Director (family member)	Canolfan Gerdd William Mathias	Grant (2)	35,000	3,000
Olivia Harris Unpaid Producer	Kitsch & Sync Collective	Grant (1)	6,500	650
Nia Wynn Jones Volunteer – Press/ Marketing	Taking Flight Theatre	Grant (6)	125,164	85,141
Duncan Lackie Board Member (family member)	Congress Theatre Cwmbran	Grant (1)	50,000	50,000
Betsan Moses Councillor (family member)	Carmarthenshire County Council	Grant (1)	618	Nil
Board Member (family member)	Oriel Myrddin	Grant (1)	7,500	7,500
Antony Owen-Hicks Band Member (staff and family member)	Carreg Lafar	Grant (1)	4,750	Nil
Hywel Tudor Short Term Freelance (family member)	Orchard Media	Grant (2)	125,802	125,802

## Annexes to the Annual Report (not forming part of the financial statements)

### National Lottery Policy Directions

The Welsh Ministers, in exercise of the powers conferred by section 26(1) of the National Lottery etc. Act 1993, and having consulted with the Arts Council of Wales pursuant to Section 26(5) of that Act, have issued the following Directions:

- 1 In these Directions any reference to a section is a reference to a section of the National Lottery etc. Act 1993 as amended by the National Lottery Act 1998.
- 2 The Arts Council of Wales shall take into account the following matters in determining the persons to whom, the purposes for which and the conditions subject to which it distributes money under section 25(1):

#### Generic

- A the need to ensure that money is distributed under section 25(1) for projects which promote the public good or charitable purposes and which are not intended primarily for public gain;
- B the need to ensure that it considers applications which relate to the complete range of activities falling within section 22(3)(b) and in respect of which it has the power to distribute money, taking into account:
  - i its assessment of the needs of the arts and arts activities and its priorities for the time being for addressing them;
  - ii the need to ensure that all regions of Wales have access to funding;
  - iii the scope for reducing economic and social deprivation at the same time as creating benefits for the arts;
- C the need to further the objectives of sustainable development;
- D the need for money distributed under section 25(1) to be distributed only to projects where they are for a specific, time-limited purpose;
- E the need:
  - i in all cases, for applicants to demonstrate the financial viability of the project for the period of the grant;
  - ii where capital funding or setting up costs are sought, for a clear business plan beyond the period of the grant, incorporating provision for associated running and maintenance costs;
  - iii in other cases, for consideration to be given to likely availability of other funding to meet any continuing costs for a reasonable period after completion of the period of the Lottery award, taking into account the size and nature of the project, and for Lottery funding to be used to assist progress towards viability beyond the period of the grant wherever possible;
- F the desirability of supporting the development of long term financial and managerial viability of organisations in the arts. In taking this into account the Arts Council shall have regard to Direction D;
- G the need to require an element of partnership funding and/or contributions in kind, from other sources, commensurate with the reasonable ability of different kinds of application, or applicants in particular areas to obtain such support;
- H the desirability of working with other organisations, including other distributors, where this is an effective means of delivering elements of its strategy;

- I the need to ensure that its powers to solicit applications under section 25(2)(A) are used in connection with the pursuit of strategic objectives;
- J the need to obtain such information as it considers necessary to make decisions on each application, including independent advice when required;
- K the need to operate within the distinctive policy context in Wales, adding value where appropriate to Welsh Government strategies, to enable the development of opportunities for everyone to flourish within a more successful and sustainable Wales;
- L the need to promote access to the arts for people from all sections of society;
- M the need to promote knowledge of, and interest in, the arts by children and young people;
- N the need to encourage new talent, innovation, and excellence, and to help develop new skills;
- O the need to support volunteering and encourage volunteering in the arts;
- P the need to involve the public and local communities in making policies and setting priorities;

**Specific**

- Q the need to promote and support throughout Wales the cultural significance of the Welsh language and the bilingual nature of Wales, including giving effect to the principle of equality between the English and Welsh languages. This should include the addition of specific conditions on the Welsh language in grant offers, an effective monitoring and overseeing of the performance of grant recipients with regard to those conditions;
- R the need to ensure coherent monitoring, evaluation and reporting systems that support quality service delivery, and to maintain accountability by providing an annual report on the Arts Council of Wales' lottery funding activity to the Welsh Government. This report should include an analysis of grants made, and the distribution of these by size, type, geographical area, and art form.

Dated: 1 October 2012

## Lottery Distribution – Grants Offered 2013-14

net of offers not taken up or withdrawn

### Grants to organisations

#### Capital grants

Amgueddfa ac Oriol Gwynedd	£100,000
Arad Goch	£50,000
Borough Theatre Abergavenny	£23,325
Celf O Gwmpas	£4,532
Chapter (Cardiff) Ltd. (2 awards)	£88,990
City and County of Swansea	£500,000
Community Music Wales	£11,864
Congress Theatre Company	£50,000
Conwy County Borough Council	£50,000
Cwmni'r Fran Wen	£11,171
Galeri Caernarfon Cyf (2 awards)	£69,700
Hafren	£52,125
Hay Festival of Literature and the Arts Ltd	£9,515
Montgomery Movie Club	£2,786
Neuadd Dwyfor	£35,780
Pontardawe Arts Centre	£95,000
Presteigne Festival of Music and the Arts Ltd	£7,606
Rhondda Community Development Association	£48,763
Rubicon Dance	£9,521
Sherman Cymru	£7,344
Span Arts Ltd	£5,642
St. David's Hall	£46,963
Taliesin Arts Centre	£75,727
The Riverfront	£25,832
Theatr Bara Caws	£23,856
Theatr Iolo	£29,000
Vale of Glamorgan Council	£50,000
Valley & Vale Community Arts Ltd.	£840,000
Volcano Theatre Company Ltd	£19,685
Wrexham County Borough Council	£26,750
	<b>£2,371,477</b>

#### Large grants (over £5,000)

4 Pi Productions	£27,500
9Bach	£29,800
Aberjazz	£10,000
Aberjazz	£12,500
Aberystwyth Arts Centre (2 awards)	£37,000
Aberystwyth Music Fest (2 awards)	£55,556
ABMU Arts in Health Board	£21,000
Access All Areas (2 awards)	£95,628
Addo	£27,600

Afasic Cymru	£24,957
AGE Cymru	£64,140
Andrew Logan Museum of Sculpture	£26,800
Anglesey Arts Forum	£25,500
Arad Goch	£74,879
Arcadecardiff C.I.C.	£30,000
Artes Mundi Prize Limited (2 awards)	£50,100
Arts Alive	£30,000
Arts Connection / Cyswllt Celf	£16,800
Audiences Wales	£10,800
August 012 Limited (2 awards)	£50,700
Axisweb	£25,000
Ballet Cymru (2 awards)	£63,260
Ballet Nimba	£30,000
Bangor University (6 awards)	£197,612
Barnardo's	£18,242
Bespoken Theatre	£30,000
Beyond the Border (2 awards)	£129,710
Blackwood Miners' Institute (2 awards)	£49,725
Blaenau Gwent County Borough Council	£29,995
blinc CIC	£86,500
Bocs	£30,000
Bombastic (2 awards)	£83,780
Borough Theatre Abergavenny	£29,603
Breakin' Out Festival	£30,000
Bridgend County Borough Council	£13,500
Butetown Artists	£29,565
CAAPO	£10,000
Caerphilly County Borough Council	£29,352
Camerata Wales	£30,000
Canolfan a Menter Gymraeg Merthyr Tudful	£29,525
Canolfan Gerdd William Mathias Cyf	£30,000
Canolfan Porthceri Centre	£16,200
Cardiff Arts Collective	£16,485
Cardiff Council	£100,000
Cardiff Multicultural Mela Limited	£13,000
Carlson Dance Company Ltd	£30,000
Celf O Gwmpas (2 awards)	£75,746
Celtic Neighbours	£8,947
Chapter (Cardiff) Ltd. (3 awards)	£63,500
City and County of Swansea	£22,500
Clera	£13,557
Clwyd Theatr Cymru	£22,500
Clwyd Theatr Cymru TYP	£89,576
Cofis Bach	£30,000
Community Music Wales (2 awards)	£40,512
Company of Sirens (2 awards)	£25,001
Conwy Arts Trust	£27,000

Conwy County Borough Council (3 awards)	£46,888
Cowbridge Music Festival (2 awards)	£55,000
Crashmat Collective	£43,050
Create It!	£24,031
Creu Cymru - The Touring Agency for Wales (3 awards)	£364,704
Crwth	£24,000
Cwlwm Celtaidd Wales' Interceltic Festival	£8,000
Cwmni Coll Cyf (2 awards)	£60,000
Cwmni Martyn Geraint (2 awards)	£70,000
Cwmni Mega Cyf/ Ltd (2 awards)	£65,100
Cwmni'r Fran Wen (6 awards)	£156,260
Cyfle	£25,000
Cymdeithas Rhieni ac Athrawon Ysgol Tryfan	£27,400
Cyngor Gwynedd (2 awards)	£219,315
Cyngor Sir Ynys Mon (2 awards)	£55,000
Cynon Valley Museum & Gallery	£15,500
Dafydd James & Company	£12,000
Dance Base, Scotland's National Centre for Dance	£15,000
Dance Blast (2 awards)	£76,625
Dance Collective	£22,688
Dance Touring Partnership (2 awards)	£60,000
Dance4	£29,910
Datrys	£28,798
De Oscuro	£27,000
Denbighshire County Council (2 awards)	£53,650
Difficult Stage	£15,271
Dirty Protest (2 awards)	£42,000
Disability Arts Shropshire	£54,000
Diverse Cymru	£29,955
Drama Association of Wales	£30,000
Earthfall Dance Ltd. (2 awards)	£59,685
Eisteddfod Genedlaethol Cymru (2 awards)	£100,400
Elysium Gallery	£21,771
engage (National Association for Gallery Education)	£40,000
Ensemble Cymru (2 awards)	£100,000
Foundation for Community Dance	£49,750
Fourth Wall	£45,000
Freewheeling Films Ltd	£45,000
g39 (2 awards)	£60,000
Gagglebabble	£17,842
Galeri Caernarfon Cyf	£30,000
GDance	£69,950
Glynn Vivian Art Gallery (2 awards)	£54,000
Grand Slam Theatre Company	£20,000
Grand Theatre Swansea	£73,000
Greenman Festival Limited	£100,000
Gregynog Festival	£30,000
Gritty Realism Productions	£19,350



Gwasanaeth Ysgolion William Mathias	£40,000
Gwledd Conwy Feast CIC (2 awards)	£57,245
Gwyl Beaumaris Festival	£11,500
Gwyl Ifan	£7,000
Gwyn Hall	£28,000
Hafren	£30,000
Harnisch-Lacey Dance Theatre	£29,899
Hay Festival of Literature and the Arts Ltd (2 awards)	£200,000
Helga Gelf Cyfyngedig (2 awards)	£45,318
Hijinx Theatre (2 awards)	£130,000
Invisible Ink	£30,000
Islet	£29,969
It's My Shout Productions Ltd (2 awards)	£57,172
James Tyson Productions	£30,500
Josef Herman Art Foundation Cymru	£21,850
Kindle Theatre	£10,000
Kitsch & Sync Collective	£6,500
Laugharne Literary Festival	£30,000
Laura H Drane Associates Ltd (2 awards)	£38,073
Lighthouse Theatre Ltd	£18,000
Likely Story Theatre	£22,704
Literature Wales	£100,000
Liveartshow (2 awards)	£36,500
Living Pictures Productions	£30,000
Llangollen Fringe Festival	£20,000
Llangollen International Musical Eisteddfod	£100,000
Llanover Hall Arts Centre	£17,582
Llantarnam Grange Arts Centre	£26,885
Locws International	£100,000
Lower Machen Festival	£85,000
Made by Hand	£20,000
Made In Roath (2 awards)	£48,649
Maesteg Town Hall Ltd	£29,910
Mai oh Mai Productions	£19,990
Maindee Festival Association	£7,400
Makers Guild in Wales	£28,000
Making Music Wales	£30,000
Meadow Arts	£30,000
Memorial Hall and Theatre	£28,500
Menter Caerdydd (2 awards)	£38,250
Menter Rhosygilwen	£12,000
Mess up the Mess Theatre Company	£50,000
Mid Wales Opera	£15,000
Migrations (2 awards)	£132,900
Miles Productions	£11,702
Mostyn (3 awards)	£109,666
Mr and Mrs Clark (2 awards)	£27,969
Museum of Modern Art, Wales	£25,300

National Theatre Wales	£50,000
Neath Port Talbot County Borough Council	£28,470
NEW Dance	£30,000
Newport City Council	£25,680
NoFit State Community Circus Ltd	£12,000
North Wales International Music Festival	£50,000
North Wales International Poetry Festival	£19,128
North Wales Jazz Society	£29,993
Omidaze Productions	£24,400
OPRA Cymru Cyf	£74,000
Orchard Media and Events (2 awards)	£125,802
Oriel Davies Gallery	£30,000
Oriel Myrddin Trust	£7,500
Oriel Plas Glyn-y-Weddw Cyfyngedig (2 awards)	£58,373
Oriel Wrecsam	£30,000
Oriel Ynys Mon	£28,528
Pant and Dowlais Boys and Girls Club	£30,000
Papertrail	£16,000
Pavilion Theatre	£15,529
Penpergwm House Ltd.	£11,482
PLANED	£17,346
Plas Derw Trust Ltd	£10,680
Pontardawe Arts Centre (2 awards)	£60,000
Porthcawl Jazz Festival	£15,000
Powys County Council	£30,000
Prince's Trust - Cymru	£19,004
Queens Hall	£30,000
Re Bourne Ltd	£98,909
Rhondda Cynon Taf County Borough Council	£30,000
RLWC2013	£30,000
Run Ragged Productions	£28,705
Sculpture Cymru	£12,800
Sesiwn Fawr Dolgellau	£20,000
Shakespeare Link	£17,325
Shakespeare Schools Festival	£30,000
Sherman Cymru (2 awards)	£59,556
Sinfonia Cymru	£98,000
Small World Theatre Ltd	£20,000
Sound Affairs (2 awards)	£72,124
South Wales Intercultural Community Arts	£26,444
Span Arts Ltd (2 awards)	£60,000
Spectacle Theatre (2 awards)	£41,976
St. David's Hall (2 awards)	£154,300
Stiwt Arts Trust Ltd.	£30,000
Sustrans Cymru	£30,000
Swansea City Opera & The Opera School Wales	£29,500
Swansea Festival of Music and the Arts Ltd	£69,000
Swansea Jazzland	£25,000

Swansea Metropolitan University	£21,375
Swansea YMCA	£22,312
SWN Festival	£50,000
Tai Calon Community Housing	£27,700
Taking Flight Theatre Company (3 awards)	£111,287
Taliesin Arts Centre (2 awards)	£43,280
Tanja Râman+dbini industries (2 awards)	£42,000
The Cholmondeleys Limited (2 awards)	£60,000
The Circuit	£16,000
The Cory Band	£30,000
The Department of Enjoyment	£30,000
The Junket Club	£5,000
The Original Print Place	£12,910
The Riverfront (2 awards)	£66,980
The Roar Ensemble (2 awards)	£58,000
Theatr 1.618 Theatre	£21,347
Theatr Colwyn	£28,352
Theatr Genedlaethol Cymru (2 awards)	£106,700
Theatr Harlech	£100,000
Theatr Iolo (2 awards)	£58,000
Theatr Mwldan (2 awards)	£71,380
Theatr na n'Óg (2 awards)	£130,000
Theatr Pena (3 awards)	£139,787
Theatrau Sir Gar (2 awards)	£43,936
Theatre Versus Oppression	£25,000
THIS Project	£19,587
Tin Shed Theatre Company	£8,892
Tintern Festivals Association	£15,000
Torch Theatre Company Limited	£12,000
Torfaen County Borough Council	£25,987
trac - Music Traditions Wales	£12,000
Tredegar House Folk Festival	£7,000
Truth Department	£24,227
UCAN Productions	£28,237
University of South Wales	£8,893
Urdd Gobaith Cymru (2 awards)	£90,000
Vale of Glamorgan Festival (2 awards)	£187,500
Venue Cymru	£100,000
Vision Thing Communications	£12,382
VODO	£24,990
Volcano Theatre Company Ltd (3 awards)	£47,956
Waking Exploits	£50,800
Wales Millennium Centre (3 awards)	£149,061
Welsh Fargo Stage Company	£30,000
Welsh Music Foundation	£29,568
Welsh Sinfonia	£60,437
West Flintshire Community Enterprises	£18,100
Winding Snake Productions	£22,500

Wisp Dance Club	£11,000
Wrexham County Borough Council (2 awards)	£36,850
Wye Valley Area of Outstanding Natural Beauty (AONB)	£30,000
Wyeside Arts Centre Ltd	£30,000
Yale College	£25,000
yello brick	£30,000
Young Music Makers of Dyfed	£22,000
Youth of Creative Arts	£20,200
Ysgol Theatr Maldwyn Cyf	£20,000
Ystradgynlais Miners' Welfare and Community Hall Trust Ltd	£30,000
	<b>£11,492,046</b>

**Small grants (up to £5,000)**

3ORMORE	£2,041
9Bach	£3,520
Abersoch Jazz Festival	£5,000
Agent 160 Theatre Company	£338
Allan yn y Fan	£4,500
Amgueddfa Cymru - National Museum Wales	£3,500
Amgueddfa Llandudno Museum	£3,800
Artes Mundi Prize Limited	£5,000
Arts Alive	£4,990
Arts Connection / Cyswllt Celf	£3,750
August 012 Limited	£4,680
B10c (2 awards)	£8,900
Baluji Music Foundation	£5,000
Bare Fiction	£4,099
Barry YMCA	£4,620
Beddgelert Music Festival	£1,324
Bethesda Artworks	£3,030
Betws Ymlaen	£2,230
Black Mountain Jazz	£2,000
Bread & Goose	£3,000
Brecon Jazz Club	£4,950
Bridgend Arts Ltd.	£5,000
Bridgend County Borough Council	£3,120
Canolfan Gerdd William Mathias Cyf	£5,000
Cardiff Dance Festival	£4,500
Cardiff Polyphonic Choir	£3,060
Cardiff Small Theatre	£3,000
Carmarthen Arts	£1,200
Carmarthenshire County Council	£618
Carreg Lafar	£4,750
Ceredigion Museum	£4,241
ChainWorks Productions	£5,000
Citrus Arts	£5,000
Clwb Ifor Bach	£5,000
Congress Youth Theatre	£5,000

Connahs Quay High School	£3,192
Cwpan Aur	£2,500
Cymdeithas Dreftadaeth y Bala a Phenllyn Cantref	£3,086
Cymdeithas Rhieni ac Athrawon Ysgol Gymraeg Treganna	£4,800
Cymru Pride Wales	£5,000
Cywaith Gemwaith Gogledd Cymru	£3,671
Dawns i Bawb	£5,000
Deeside Community Arts (2 awards)	£10,000
Difference Exchange	£5,000
Difficult Stage	£4,580
Do Not Go Gentle Festival	£4,650
Drama Association of Wales	£3,750
Drum With Our Hands Ltd.	£2,460
Elfed High School	£4,000
Ensemble Cymru	£5,000
Equinox Theatre	£5,000
Ffotogallery	£4,000
FILMCLUB Cymru	£5,000
Fire in the Mountain Festival LTD	£2,725
Flintshire County Council (3 awards)	£14,800
Focus Wales	£2,423
Four Winds Productions	£5,000
Fragments	£5,000
Friends of Flintshire Youth Music	£5,000
Friends of the Classics	£2,250
Future of the Left Ltd.	£5,000
Gagglebabble	£4,978
Galeri Caernarfon Cyf	£5,000
Garden Village Residents Association (Centenary Youth Team)	£3,792
G-Expressions	£4,995
Ghost Horse Records	£5,000
Glasbury Arts	£4,970
Golwg Cyf	£5,000
Gower College Swansea	£4,780
Gower Folk Festival	£5,000
Greenman Festival Limited	£4,934
Gwent Theatre	£5,000
Gwyl Nol a Mlan	£5,000
Gwyl Ogwen	£852
Halo Leisure Services Ltd	£5,000
Hay Theatre CIC	£5,000
Holy Hiatus	£2,955
Invertigo Theatre Company	£5,000
James	£4,500
Jamie Smith's Mabon	£5,000
JazzCakes (2 awards)	£6,750
Joanna Gruesome	£3,362
Joon Dance	£5,000

Klep Dim Trep	£5,000
Laura H Drane Associates Ltd	£5,000
Learning Disability Wales	£2,200
Lighthouse Theatre Ltd	£2,280
Likely Story Theatre	£4,600
Literature Wales	£5,000
Liveartshow	£5,000
Llandeilo Fawr Festival of Music	£4,138
Llantilio Crossenny Festival of Music and Drama Ltd	£4,645
Maindee Festival Association	£4,400
Mary Bijou Cabaret and Social Club	£4,329
Menter Caerffili	£4,850
Menter Iaith Sir Ddinbych (2 awards)	£6,882
Menter Rhosygilwen	£5,000
Merthyr Tydfil Global Village	£5,000
Mid Border Community Arts Ltd (2 awards)	£8,500
Mid Powys Youth Theatre	£5,000
Mid Wales Chamber Orchestra	£5,000
Mind Out for Music	£5,000
Ministry of Life	£5,000
Mocambo, Capoeira	£4,995
Modern Alchemists	£4,200
Mountain Lane CP School	£2,160
Mr and Mrs Clark	£4,900
Music Theatre Wales	£5,000
Nantgarw China Works Trust	£5,000
Neuadd Dwyfor	£5,000
Newport International Airspace	£4,600
NoFit State Community Circus Ltd	£1,861
North Denbighshire Communities First	£4,454
North Powys Youth Music Trust	£3,090
North Wales Bluegrass Music and Dance Festival	£5,000
North Wales Pilgrims Way	£3,496
NWAMI	£5,000
Olion Byw	£3,000
Omidaze Productions	£5,000
Organised Kaos Youth Circus Ltd	£5,000
Pavilion Theatre	£4,868
Peep Toe Productions Ltd	£5,000
Pembrokeshire People First	£5,000
Penarth Pier Pavilion	£2,235
Powys Dance	£3,750
Prestatyn High School	£3,000
Queensferry CP School	£2,334
Recordiau Cae Gwyn Records	£3,729
Recordiau I KA CHING Records	£4,800
Re-Live	£4,500
Retired and Senior Volunteer Programme - Shotton Knitters Project	£3,960

Rhondda Cynon Tâf County Borough Council (2 awards)	£6,352
Royal Cambrian Academy	£5,000
Run Amok Theatre Company	£4,800
Ruthin Festival Association	£2,000
Sain (Recordiau) Cyf	£5,000
Salsa Amor Cymru	£5,000
Samoans	£4,500
Scriptography Productions	£2,350
South Wales Intercultural Community Arts	£2,449
St. David's Hall	£5,000
Suitcase Theatre	£4,995
Swansea City Opera & The Opera School Wales	£5,000
Taking Flight Theatre Company (2 awards)	£9,017
Tenovus	£1,500
The Kickplate Project	£3,849
The Marches Oboe School	£2,500
The Peter Gould Music Trust	£4,161
The Republic of Imagination	£5,000
The Riverfront	£3,200
The Welsh Group	£5,000
Theatr Monte	£3,550
THIS Project	£4,993
Tin Shed Theatre Company	£4,996
trac - Music Traditions Wales	£5,000
Transition Narberth	£940
University of South Wales	£1,237
University of Wales, Aberystwyth (Ceramic Archive)	£5,000
Vagabondi Theatrical Arts	£5,000
Venue Cymru	£2,014
Wales Arts Review	£2,000
Welsh Music Foundation	£4,984
Winter Villains	£4,500
Wisp Dance Club	£4,980
WJEC CBAC Ltd. (3 awards)	£14,500
WWAMH	£5,000
Wye Valley Area of Outstanding Natural Beauty (AONB)	£4,750
Wyeside Arts Centre Ltd	£3,750
Women's Writing Festival	£5,000
Ymuno Festival	£5,000
Youth of Creative Arts	£5,000
Ysceifiog Village Hall Management Committee	£4,350
Ysgol Cedewain	£1,399
Ysgol Estyn	£2,400
Ysgol Gwynedd	£1,800
Ysgol Pencoch	£2,400
Ysgol Trelawnyd	£2,160
Ysgol Trelogan	£5,000
	<b>£769,648</b>

**Training grants**

Andrew Logan Museum of Sculpture	£825
Artes Mundi Prize Limited	£5,000
Articulture	£60,000
Artis Community Cymuned	£20,414
Ballet Cymru	£29,880
Caerphilly County Borough Council	£7,000
Cardiff Metropolitan University	£10,800
Celf O Gwmpas	£26,737
Clwyd Theatr Cymru TYP (2 awards)	£23,750
Cofis Bach	£5,000
Community Music Wales	£46,000
Dance Collective	£5,911
Dawns i Bawb	£27,500
Dawnsyr Talog	£5,000
Disability Arts Cymru	£20,505
Earthfall Dance Ltd.	£9,000
g39 (2 awards)	£65,000
Galeri Caernarfon Cyf	£4,318
Gregynog Festival	£3,599
Helpa Gelf Cyfyngedig	£10,500
Hijinx Theatre	£30,000
Index on Censorship	£5,000
Kodaly Society of Wales (2 awards)	£18,547
Mess up the Mess Theatre Company	£19,650
Mid Wales Opera	£30,000
MissionModelsMoney	£50,000
National Theatre Wales	£24,000
Re-Live	£27,450
Stephens and George Charitable Trust	£5,000
Taking Flight Theatre Company	£4,860
Tanja Râman+dbini industries	£2,640
The Broadway Drawing School	£5,000
Theatr Fforwm Cymru	£17,475
THIS Project	£4,500
trac - Music Traditions Wales (2 awards)	£59,910
UCAN Productions	£4,900
Venue Cymru	£11,313
Welsh Sinfonia	£15,618
Wyeside Arts Centre Ltd	£2,043
	<b>£724,645</b>

**Strategic grants**

Artis Community Cymuned	£16,580
Centre for Business and Social Action	£16,123
Community Music Wales	£18,576
Cwmbran Centre for Young People	£20,000



Cwmni'r Fran Wen	£19,605
Dynamix	£19,988
engage (National Association for Gallery Education)	£20,000
Head for Arts	£20,000
Menter Mon Cyf	£13,500
Mess up the Mess Theatre Company	£18,586
Neath Port Talbot County Borough Council	£20,000
Span Arts Ltd	£20,000
Swansea Metropolitan University	£20,000
UCAN Productions	£19,910
Valleys Kids	£20,000
	<b>£282,868</b>

**Creative Steps grants**

Butetown History & Arts Centre	£240,000
Jukebox Collective	£336,683
Youth of Creative Arts	£30,000
	<b>£606,683</b>

**Total Grants to Organisations****£16,247,367**

## Grants to individuals

**Small grants (up to £5,000)**

Allison, Justine	£2,200
Appleton, Melissa	£3,000
Ashill, Kathryn	£5,000
Ashton, Kenneth	£5,000
Ashworth, Elizabeth	£3,000
Awst, Manon	£3,000
Barber, Charlie	£4,905
Barratt, Anna	£5,000
Beeby, Beca (2 awards)	£3,437
Bell, Ellen	£944
Berney, Hannah Katie	£5,000
Best, Kelly	£5,000
Bettridge, Dan	£3,100
Bonada, Marja (2 awards)	£6,680
Bonello, Gareth	£5,000
Borthwick, Ben	£5,000
Bowers, Richard	£2,990
Brown, Sian Eleanor	£3,000
Buckingham-Daley, Sophie	£2,450
Bullock, Brenda	£5,000
Button, David	£2,020
Cardwell, Bruce	£2,250
Cartwright, Jason	£2,722

Chambers, Gareth	£921
Cheater, Phillip	£3,000
Chiswell, Corrie	£3,600
Ciaran, Cian	£3,000
Cook, Justine	£2,960
Cooper, Christine	£3,831
Corr, Sue	£1,338
Crossley, Leah	£3,000
Cysewski, Karol	£5,000
Da Silva Oliveira, Hugo Maciel	£2,620
Dalrymple, Neil	£3,000
D'Arcy, Dymphna	£2,950
Davies, Huw	£5,000
Davies, Robert	£5,000
Davies, Sion Glyn	£3,000
Davies, Stephanie	£3,000
Daws, Martin	£4,186
Dell'Armi, Karen	£4,998
Disson, Joseph	£5,000
Downing, Richard	£5,000
Eames, Manon	£2,700
Eden, Juliet	£4,990
Elstob, Tom	£4,498
Emberton, Gwyn	£3,000
Evans, Geraint	£2,700
Evans, Sarah Jayne	£2,700
Featherstone, Shaun	£5,000
Fowler, Dylan (2 awards)	£8,963
Francis, Karl	£2,700
Ghazoul, Rabab	£3,000
Gil Cortés, Neus	£2,755
Godfrey, Heloise	£3,000
Graham, Alison	£5,000
Griggs, Amy	£3,400
Gwilym, Owain	£5,000
Hall, Jessica	£5,000
Hallas, Penny	£3,000
Hanks-Doyle, Catrin	£4,000
Harper, James	£4,532
Harris, Alan	£3,000
Harris, Tracy	£4,886
Harrison, Caroline	£4,500
Harrisson, Eileen	£3,000
Hartwig, Johana	£3,015
Holcroft, Jonathan	£2,472
Hughes, Nicolas William	£4,050
Huws, Sioned	£4,985

Igic, Tatjana	£2,969
Iwanowski, Michal	£5,000
James Jones, Buddug	£2,685
James, Keith	£3,550
James, Mark	£5,000
James, Shaun	£1,728
Jenkins, Delyth	£2,790
Jenkins, Paul	£2,515
Jensen, Denni	£3,000
Johnstone, Amelia	£1,500
Jonathan Powell	£4,050
Jones, Andrew (2 awards)	£5,739
Jones, Ian	£5,000
Jones, Kelly	£2,980
Jones, Madeleine	£4,720
Jones, Sianed	£2,983
Joyner, Siriol	£5,000
Kane, Dominic	£5,000
Kilbride, Danny	£1,529
Kingman, Susan	£2,760
Kingston, Sasha	£4,078
Lalic, Maria	£5,000
Lawlor, Patrick	£3,186
Lawrence, Kate	£3,000
Leadbeatter, Myles	£1,667
Lerner, Jessica (2 awards)	£8,000
Light, Deborah	£5,000
Llewelyn-Williams, Daniel	£5,000
Lucia, Emma	£3,000
Malcolm, Victoria	£1,558
Marsh, Jo	£2,952
McNeill, Andrew	£5,000
Mendum, Shaun	£2,827
Monaghan, Pete	£4,800
Moore, Jeremy	£4,500
Morrison, Craig	£3,000
Muller, Holly	£5,000
Nosratpour, Shwan	£5,000
Nougarède, Magali	£2,400
Oakley, Chris	£2,930
Oben, Tiff	£5,000
O'Higgins, Anna	£1,905
Olsen, Sean	£3,200
Owen, Sarah	£3,000
Parkin, Mark	£4,428
Parry-Jones, Clare	£3,000
Patrick, Kirsty	£4,472

Pavey, Mark	£5,000
Pezzack, Billy	£3,000
Phillips, Gareth	£4,500
Plowman, Lynne	£3,000
Pocklington, Lorraine	£5,000
Price, Rhian Catrin	£3,000
Pryce, Guto	£2,560
Rashbrook, Sophie	£3,000
Rees, Aled	£4,565
Rees, Caroline	£2,370
Reynolds, Anthony	£5,000
Richardson Laurens, Emily	£3,000
Roberts, Angela Barbara	£3,000
Roberts, Stephanie	£4,766
Robinson, Richard	£3,000
Robinson, Stephen	£5,000
Rogers, Sarah (2 awards)	£7,506
Salmon, Michael	£3,000
Scott, Emma	£2,965
Serra Vila, Francesc	£3,265
Smith, Rorik	£5,000
Sonnex, Grant	£3,000
Sopwith, David Mathew	£2,700
Spaull, Lisa (2 awards)	£7,995
Spaull, Robert	£3,000
Stagg, Robert	£2,050
Tann, Lisa-Marie	£3,896
Thomas, Fern (2 awards)	£7,934
Thomas, Julia	£5,000
Thomas, Owen	£5,000
Thomas, Sian Elin	£2,417
Thompson, Amy	£3,000
Tyson, Alana (2 awards)	£7,750
Vann, Alex	£3,000
Waters, Michael	£3,000
Wearing, Paul	£5,000
Webb, Derek	£4,941
Whitlock, Luke	£4,694
Williams, Annie	£1,800
Williams, Christina	£3,549
Withey, Deborah Ann	£5,000
Woods, Sarah	£5,000
Wright, Matt	£3,000
Wyn Shannon, Pamela	£5,000
Young, Joanna	£5,000
	<b>£619,572</b>

**Large grants (over £5,000)**

Awst, Manon	£18,000
Barnes, David	£24,902
Brett, Jessie	£13,560
Bromage, Tim	£18,000
Burrows, Inga	£23,581
Campbell-Moore, Roy	£30,000
Davies, Angela	£10,000
Devlin, Ronan	£25,000
Dewis, Adeola (2 awards)	£33,039
Easterby, Jonathan	£25,000
Emberton, Gwyn	£24,995
Evans, Carwyn	£12,000
Evans, Chris Tally	£25,000
Fong, Joanne	£25,000
Goosey, Iain	£24,600
Gubb, Mark	£16,500
Harrop, Angharad	£8,000
Hasler, Samuel	£8,700
Hembrough, Graham	£11,876
Jackson, Dilys	£8,050
James Jones, Buddug	£17,112
James, Dafydd	£25,000
John, Sean Tuan	£20,000
Lamb, Linda	£19,188
Light, Deborah	£23,160
Lloyd, Ben	£9,000
Loftus, Chloe	£23,969
May, Daniel	£9,637
Miles, Rhodri	£24,992
Morgan, Richard Huw	£25,000
Morison, Ivan	£25,000
Morrison, Craig	£20,000
Orrell, Jeanette	£15,841
Price, Valerie Coffin	£10,000
Raybould, Tom	£14,147
Sainty, Peter	£15,401
Sherratt, Matt	£15,000
Stokes, Anthony	£23,322
Swann, Bill	£20,356
Tyson, Alana	£19,500
Wellan, Sophie	£18,500
Williams, Bedwyr	£30,000
Wright, Matt	£21,900
Yarnell, Anushiye	£22,465
Young, Joanna	£23,550
	<b>£877,843</b>

**Training grants**

Barratt, Anna	£297
Bowers, Richard	£1,950
Cartlidge, Lynne	£750
Cornwell, Kenneth	£2,000
D'Arcy, Dymphna	£900
Davison, Elise	£1,760
Diamond, Karin	£1,800
Drane, Laura	£1,980
Fell, Jenny	£765
Fleck, Fliss	£765
Gibbons, Iain	£2,000
Goddard Tom	£1,075
Hayes, Maria	£1,352
James, Catriona	£517
Jones, Steffan	£1,900
Keehan, Bridget	£1,000
Khan, Sukina	£1,970
Lipman, Joel	£2,000
Lovegrove, Christopher	£351
Miller, Jan	£1,781
Mumford, Sarah	£2,000
Murray, Heather	£765
Norris, Linda	£1,335
Pearce, Sally	£2,000
Powlesland, Beth	£2,000
Roberts, Angela Barbara	£663
Roberts, Hywel Prytherch	£1,000
Rogers, Angela	£972
Smith, Fern	£875
Thompson, Amy	£287
Treays, Jem	£978
Tucker, Louise	£933
Wigdel, Siri	£1,900
Williams, Jeremy Huw	£2,000
	<b>£44,621</b>

**Creative Wales Awards**

Adams, Susan	£20,000
Burns, Brendan	£20,000
Childs, David	£12,000
Clark, Gareth	£24,894
Dias, Natalia	£12,000
Jenkins, Paul	£11,885
Koppel, Gideon	£25,000
Moorhouse, Sara	£20,000

Shapland, Anthony	£20,000
Thomas, Fern	£12,000
Tomos, Cai	£12,000
	<b>£189,779</b>

**Advanced Study in Music awards**

Adams, Reisha Jade	£5,000
Denholm, Anne	£4,000
Griffiths, Trystan Llyr	£5,000
Humphreys, Gareth	£2,000
Mills, Joshua Owen	£1,000
Moorcraft, Gareth	£3,000
Price, Samantha	£5,000
Roberts, Alys	£1,000
Robinson, Jessica	£1,000
Smith, Kevin Thomas	£1,000
Stoneman, Paul	£2,000
Taylor, Rhodri	£5,000
Williams, Matthew	£3,000
	<b>£38,000</b>

**Total grants to individuals****£1,769,815****Total grants offered**

net of offers not taken up or withdrawn

**£18,017,182**

## Grants administered by Ffilm Cymru Wales

**Development**

Acme Films	£15,000
Big Bad Wolf Productions	£7,000
Boom Pictures Productions Ltd	£24,075
Celtic Productions Ltd	£9,000
Dan Films (2 awards)	£21,750
Dogs of Annwn Ltd	£5,000
Claire Fowler	£2,000
Magnified Pictures Ltd	£10,988
Peter Gwynne Morgan	£5,000
Ivan Morrison	£11,745
Red and Black Films Ltd	£15,592
Severn Screen Ltd	£8,000
Severn Studios	£15,240
Sixteen Films	£13,000
Trinity Pass Productions	£15,000
Truth Department (Dewi Gregory)	£24,909
Up Helly Aa Ltd (3 awards)	£14,300
Western Edge Pictures	£20,000
	<b>£237,598</b>

**Production**

Bright Films Ltd	£200,000
Darlow Smithson and worldsend Pictures	£49,999
Fragrant Films Ltd	£10,250
Gritty Realism	£100,000
IE IE Productions Limited	£29,920
Lupus Films	£150,000
Park Films	£2,500
Debotah Perkin Media	£49,950
Piece of Cardboard Productions	£10,000
Red and Black Films Ltd (3 awards)	£144,999
Set Fire to the Stars Productions	£49,999
Severn Screen Ltd (2 awards)	£160,000
Truth Department (Dewi Gregory) (2 awards)	£74,999
	<b>£1,032,616</b>

**Education**

Arts Connection	£3,375
Matt Beere	£358
The Festivals Company Ltd	£7,728
Hijinx Theatre	£6,226
Learnaboutfilm LTD	£990
Lily Pad Films	£4,776
Pontio	£7,650
WJEC	£7,000
Zoom Cymru (3 awards)	£21,368
	<b>£59,471</b>

**Flexible education**

Bigger Picture	£500
Media Education Wales	£250
Zoom Cymru	£200
	<b>£950</b>

**Exhibition core funding**

Aberystwyth Arts Centre (2 awards)	£18,317
Canolfan Ucheldre Centre	£2,000
Chapter Arts Centre	£20,000
Clwyd Theatr Cymru	£10,365
Galeri Caernarfon	£2,192
Theatre Gwaun	£2,000
Memo Arts Centre	£2,000
Neuadd Dwyfor	£2,000
Penarth Pier Pavilion Cinema	£1,250
Pontardawe Arts Centre	£2,602
RCT Cultural Services	£2,667



Riverfront Theatre	£3,375
Scala Cinema and Arts Centre (2 awards)	£3,152
Taliesin Arts Centre	£7,467
Theatr Mwldan	£9,351
Theatre Harlech (2 awards)	£3,567
Torch Theatre	£4,000
The Welfare Ystradgynlais	£1,750
Wyeside Arts Centre ( 2 awards)	£4,446
	<b>£102,500</b>

**Exhibition festivals**

Aberystwyth Arts Centre	£15,000
Bulldozer Films	£2,500
The Festivals Company Ltd	£9,000
Hay Festivals	£6,000
Wales One World Film Festival Ltd	£9,000
Zoom Cymru	£17,500
	<b>£59,000</b>

**Special exhibition events**

Chapter Arts Centre	£2,000
Penarth Pier Pavilion Cinema	£300
Wales African Film Festival	£1,000
WJEC	£2,000
Wales One World Film Festival Ltd	£2,000
Zoom Cymru	£250
	<b>£7,550</b>

Total grants offered by Ffilm Cymru Wales  
net of offers not taken up or withdrawn

**£1,499,685**

Grants administered by Nesta

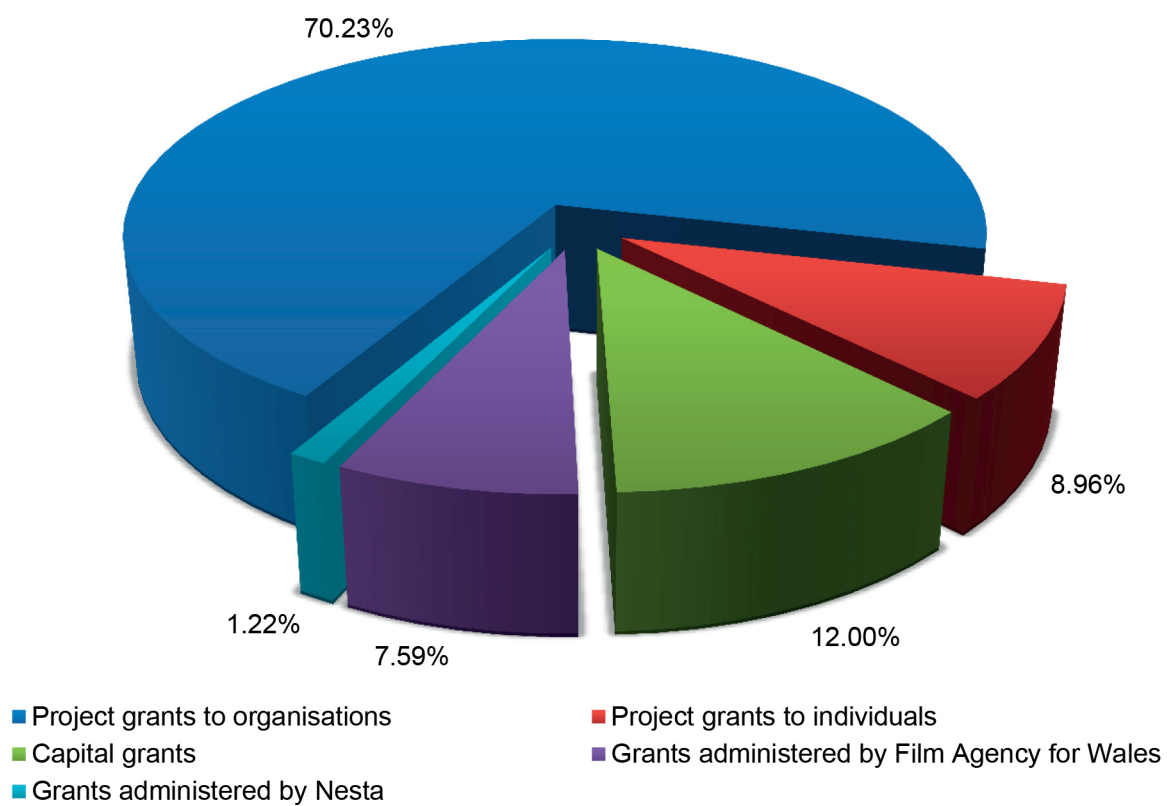
**Digital Research and Development**

NoFit State Circus	£75,141
TaikaBox	£52,155
UCAN Productions	£62,487
Theatr Genedlaethol Cymru	£51,539
	<b>£241,322</b>

Total grants offered by Nesta  
net of offers not taken up or withdrawn

**£241,322**

## GRANTS BY TYPE



For further information about the National Audit Office please contact:

National Audit Office  
Press Office  
157-197 Buckingham Palace Road  
Victoria  
London  
SW1W 9SP  
Tel: 020 7798 7400  
Email: [enquiries@nao.gsi.gov.uk](mailto:enquiries@nao.gsi.gov.uk)

DG Ref: 10457

ISBN 978-1-910305-12-6



9 781910 305126