



MMO Lyme Bay Sole Fishery Workshop

Crowne Plaza Hotel, Plymouth
1030 – 1530; 19th June 2023

Workshop Report

About this report

This report summarises the conversation held during this facilitated workshop¹. This report follows the flow of the conversation from start to finish.

Notes of the discussion were captured on flipchart paper by the facilitation team, 'in the room', in full view of the participants. This summary report is based on those 'raw' notes. A list of participants can be found on page 16.

For completeness, transparency and to assist workshop participant's recollection of the discussions, the flipchart notes were photographed and compiled into a 'photonote' which is included as an annex to this report.

The MMO team from the workshop were asked to review an initial draft of this report to ensure it was technically/factually accurate. This review led to some useful amendments and clarifications.

¹ *3KQ.co.uk – independent facilitators and reporters of the workshop*



Objectives for Workshop: (as circulated)

The objectives for the workshop were to:

1. Develop mutual understanding of the key issues, range of views and common aspirations for the sole fishery in Lyme Bay.
2. Have the opportunity to explore the various issues and options for managing the sole fishery in Lyme Bay.
3. Understand the MMO's decision-making responsibilities, process, next steps and longer-term wish to work more collaboratively.
4. Maximise consensus on the way forward

Draft Agenda for the Workshop (as circulated)

1030 START

- Welcome from MMO, hand over to 3KQ
- Review the agenda for the day, working style and practicalities

- Context - how do we come to be here?
*Short presentation touching on the current situation, the recent consultation and need to consider options for management.
Questions and discussion to follow.*

- Aspirations - what aspirations for the sole fishery do we collectively have?
Discussions at tables and all together

- What are the options for management?
Introducing the management options, referring to the 'Joint Fisheries Statement' requirements and the local issues being faced

LUNCH

- Exploring the issues, options and aspirations
*Working together, discussing 'what does 'best fit' look like?
Agreeing/informing decisions which will impact everyone.*

- Next steps
Offering final advice to MMO, reviewing the day, agreed actions and the way forward.

1530 CLOSE



1030 Start

- Richard Hoskin, Head of Sustainable Fisheries, MMO, welcomed everyone to the workshop and underlined that the workshop was a different way of working and part of a shift toward more collaborative discussion and working together in future. He then handed over management of the meeting to Richard Harris from 3KQ (Independent Lead Facilitator).

After a round of introductions, Richard briefly reviewed the agenda, timings, and other practicalities for the meeting. He went on to emphasise the day as an opportunity to be heard, to hear others views and also to find whatever common ground might be possible in finding a way forward for the sole fishery in Lyme Bay. A simple 'working agreement' for the day was proposed and agreed:

- One person speaks at a time
- Punctuality
- Mobile phones off while we're talking
- Mutual respect for each other

The workshop then got going with the first session.

Session 1 - Context

Richard Hoskin from MMO ran through the context in which the MMO worked, its responsibilities under the Fisheries Act and the Government's 'Joint Fisheries Statement'. Richard explained how they had a duty to balance social, economic and environmental concerns before making fisheries decisions and also stressed that the MMO were working toward more collaborative working with all interested parties toward co-management of fisheries.

Rachel Holtby and Ed Baker from the MMO then presented the group with headlines from the social, environmental and economic aspects of the consultation and wider investigation into the sole fishery in Lyme Bay responses. It was acknowledged by the team that the data presented was not complete, but was the best available.

Slides over page...



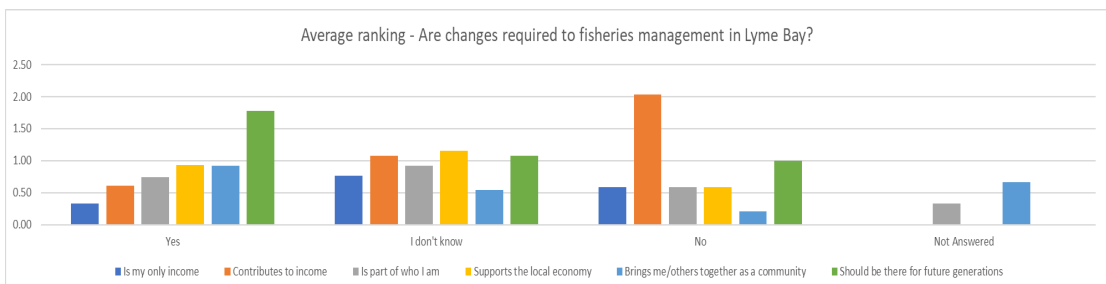
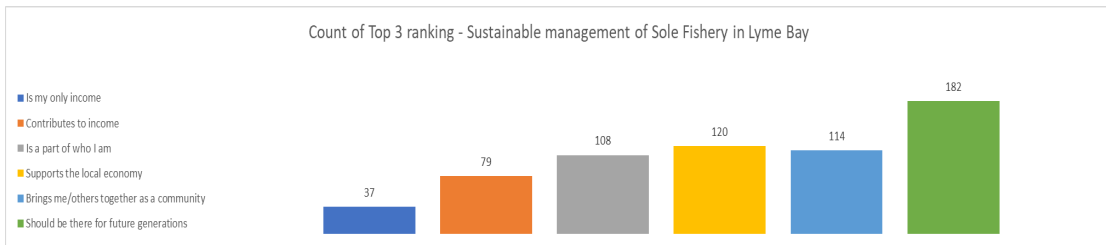
Lyme Bay Potential Management Measures for Sole Fishery

Social, Environmental and Economic Analysis Summary.

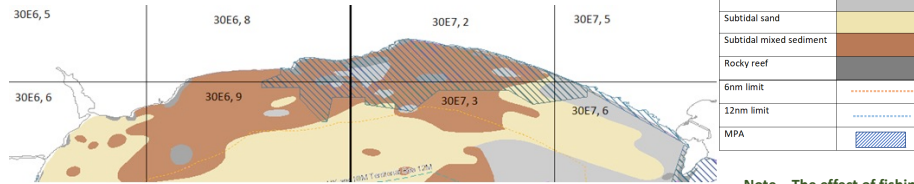
...ambitious for our seas and coasts



Social analysis - why the sustainable management of the Lyme Bay sole fishery is important.



Lyme Bay Sediment Types



Sediment type	Colour
Subtidal coarse sediment	Grey
Subtidal sand	Yellow
Subtidal mixed sediment	Orange
Rocky reef	Dark Grey
6nm limit	Dotted line
12nm limit	Dashed line
MPA	Blue hatched area

Note – The effect of fishing on rocky reef is not considered here because reef features are enclosed within the MPA which has management measures in place.

Fishing pressure by gear type: Under-10m days at sea from Catch App 2022

ICES sub rectangle	30E6			30E7		
	6	8	9	2	3	6
Dredges	24					
Gill nets and entangling nets	63	4	363	84	325	352
Hooks and lines	59	47	127	8	137	322
Miscellaneous gear			95	53	91	48
Seine nets	2					
Traps	446	55	553	147	151	289
Bottom trawls	59		42	4	155	115
Total	659	114	1199	298	862	1132

Key

Subtidal sand	Yellow
Subtidal mixed sediment	Orange
Subtidal coarse sediment	Grey

Note - We are currently analysing VMS data to also include here.

Sediment Sensitivities

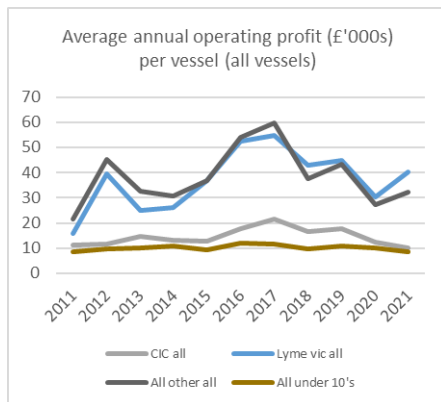
Gear type matrix	Nets and lines	Traps	Otter trawl	Beam trawl	Dredging
Subtidal sand	1	1	4	5	6
Subtidal coarse sediment	2	3	6	7	9
Subtidal mixed	2	3	9	9	9
Rocky reef	4	6	9	9	9

Note- Only the gear and sediment types listed have been considered in this risk matrix. Therefore this risk matrix is for representation of a relative comparison of these gear and sediment types only. The colour rating is NOT related to management actions and is for representation only.

An economic analysis of vessel income and costs was carried out by Seafish for all vessels with recorded landings of Sole from the ICES rectangles 30E7 and 30E6.

The analysis was conducted using data from a national dataset created by Seafish which combines costs and earnings information from vessel accounts with effort, landings and capacity data.

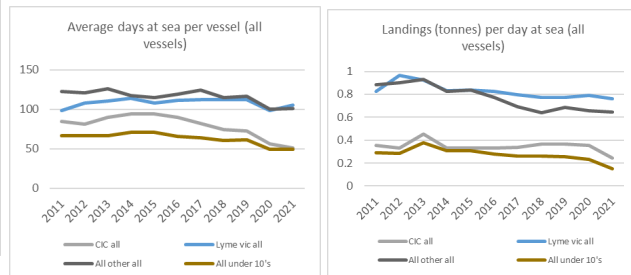
- The data shows a reduction in average annual profit per vessel for all CIC vessels and all netters from any port.



The vessels were grouped based on their home port and gear types used:

Community Interest Company (CIC), 51 vessels: Axmouth, Beer, Lyme Regies and West Bay.
Lyme Bay Vicinity (vic), 52 vessels: Weymouth, Portland, Exmouth, Exeter, Teignmouth and Brixham.
All Other Ports, 123 vessels.

- The reduction in operating profit is driven by a reduction in days at sea and landings and an increase in operating cost.





Key questions and response/discussion:

Q: Which economy is 'local' where it refers to 'Supports the local economy'?
I.e. Consultation was about Lyme Bay – but some respondents may have responded in reference to their own location outside Lyme Bay.

Response/Discussion: All fishers known to be interested were consulted and the responses were interpreted to mean the wider community, not just Lyme Bay.

Q: Is sole caught / targeted using all the methods mentioned?

Response/Discussion: No, sole is not caught in pots/traps. Towing gear goes through several habitats – hard to be precise about what is caught where.

MMO worked to assess the economic status of vessels from three groups defined by their home port and its proximity to Lyme Bay. Data used for 52 vessels over 8 years – profit estimates based on whole catch. Clear that operating costs vary a lot. Looks like profits falling for vessels based in one of the four ports Beer, Axmouth, Lyme Regis and West Bay and that this is partly caused by a reduction in days at sea and landings. Recognition of impact of Covid and noted that things are now starting to recover for some vessels. Noted increase in trawlers in the fishery and the impact on smaller boats effort (some abstain from fishing).

Q: Relationship between sole quota and these charts?

Response/Discussion: charts are 'all catch' not just sole. Sole landings have increased in line with an increase in availability of sole quota but the charts show a reduction in total landings for all species combined.

Session 2 - Aspirations

In the next stage of the discussion participants were asked to work as a small group, around their table (the 3 table groups had been pre-mixed to ensure a good mix of interests at each table – see appended list P.11). Each group included a 3KQ facilitator and an MMO representative. The task for each group was to consider the question ‘How do we want it (the sole fishery) to be?’

Individuals were encouraged to take a little time to think, before the group discussion started and to then focus on where they could all agree, aiming for up to 7 agreed statements expressing how they wanted the fishery and its management to be.

When the groups had completed their task, the conversation continued in plenary, collecting aspirational statements, one from each group in turn, repeated until all group statements had been collected. This single list of statements was captured, on flip-chart in front of the group, with most duplication being avoided as the statements were collected.

Aspirations:

N.B. The list below is ‘raw’, i.e. as collected straight from the sub-groups. In the interests of time management, it was not analysed to increase clarity or remove duplication, instead, it was agreed that the facilitation team would look at the list and suggest how best to use it to help focus and manage the next steps in the conversation.

N.B. the wording in brackets have been added to assist the readers understanding.

- *Better communication across whole fleet*
- *Gear conflict needs more communication*
- *No change in fishing area (i.e. the current area fished, without further restrictions)*
- *Clear flagging and radar reflectors (fixed gear)*
- *Amount and length of gear needs looking at (whelk pots and boxes)*
- *(Resolve ...) variety of efforts clashing – (gear) types and target catches*
- *Bycatch management (concern about using scallop dredgers to catch sole...)*
- *Minimum landing size (desire for increase in minimum landing size)*
- *Better data and evidence to inform decisions*
- *Discard ban (concern about scallop dredgers impact)*
- *Better, broader communication across all aspects of fishing*

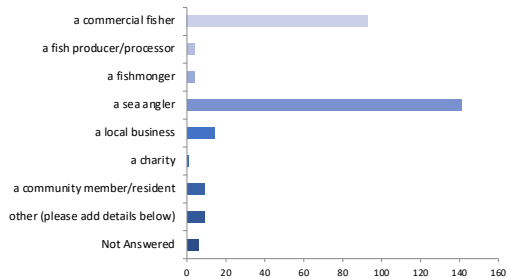
- *Defra/MMO/IFCAs to build more involvement of fishers in future directions (decisions)*
- *Celebrity (Hugh Fearnley Whittingstall) impact on policy (a concern relating to 'Landing Obligation')*
- *Beyond 12 mile fishing and scallop dredging - address impacts on inshore sole fishers*
- *Sustainability and precautionary principles to be fair and proportionate to different types of effort, flexible and adaptable*
- *Consider scale and size of issue - priorities? (need to prioritise time and effort needed to pursue aspirations/address concerns)*

Session 3 - What are the options for management?

Before the lunch break, Ed Baker from MMO gave a short presentation on the potential management options for managing the sole fishery with reference to the consultation responses.

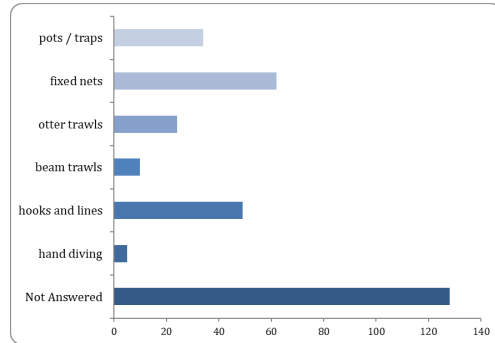


Respondent's occupation / organisation

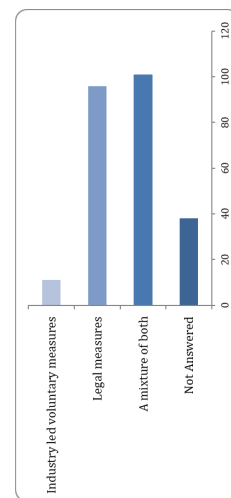
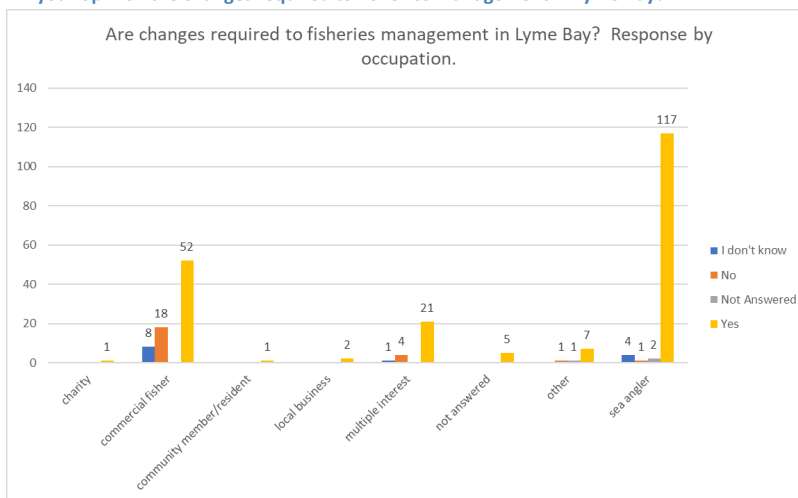


Option	Total	Percent
a commercial fisher	93	37.8%
a fish producer/processor	4	1.6%
a fishmonger	4	1.6%
a sea angler	141	57.3%
a local business	14	5.7%
a public body/council	0	0.0%
a charity	1	0.4%
a community member/resident	9	3.7%
other (please add details below)	9	3.7%
Not Answered	6	2.4%

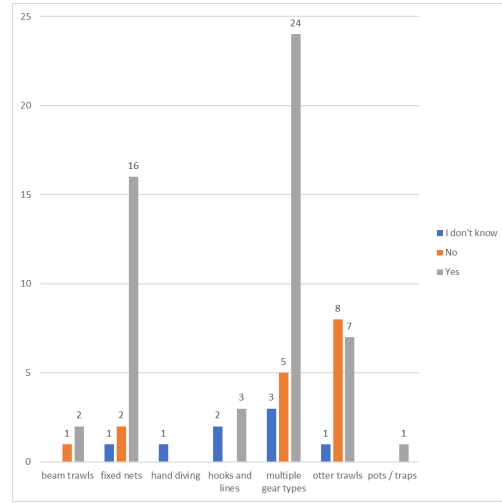
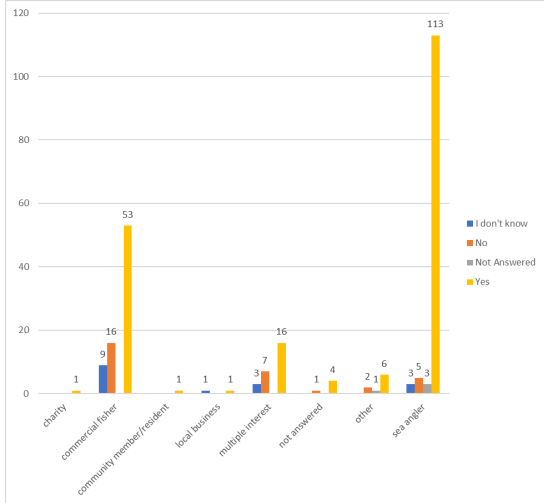
What gear type(s) do you use for fishing in Lyme Bay?



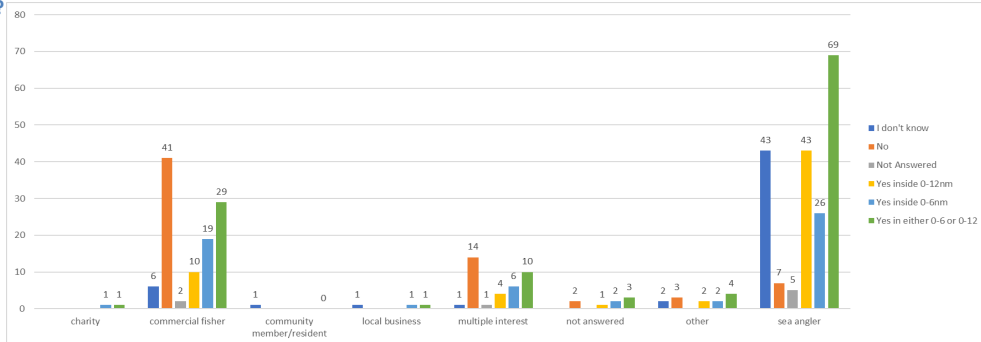
In your opinion are changes required to fisheries management in Lyme Bay?



In your opinion should there be an increase in the minimum landing size to 28cm for sole in 7.e to match the size at which 50% of sole are considered sexually mature.

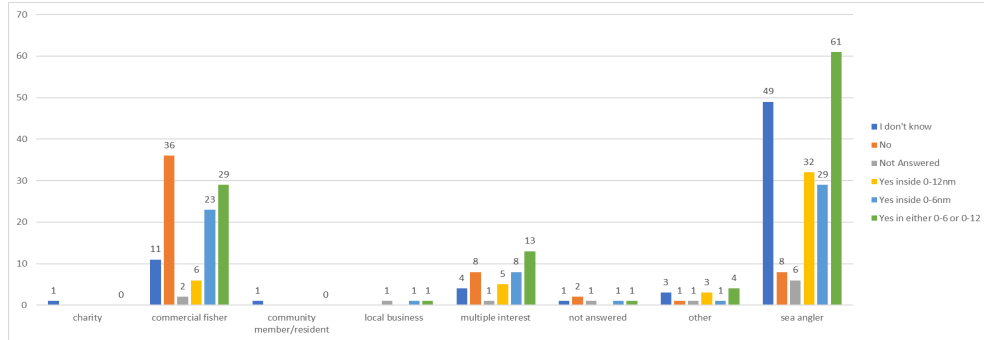


Do you think there should be a separate catch limit for sole when fishing inside 30E6 and 30E7 compared to the rest of Area 7.e?



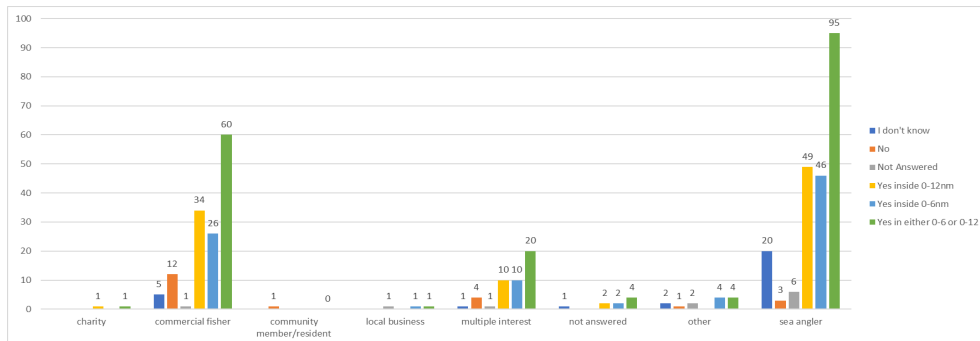
Commercial Fisher Opinion by Gear Type						
Gear type	I don't know	No	Not Answered	Yes inside 0-12nm	Yes inside 0-6nm	Yes in either 0-6nm or 0-12nm
beam trawls		2			1	1
fixed nets	1	14		1	3	4
hand diving	1					0
hooks and lines	2	1		1	1	2
multiple gear types	2	8	2	8	12	20
otter trawls		15			1	1
pots / traps					1	1
Grand Total	6	40	2	10	19	29
Percentage	8%	52%	3%	13%	25%	38%

Do you think that there should be some form of separation between the use of certain gear types in certain areas at certain times inside 30E6 and 30E7?



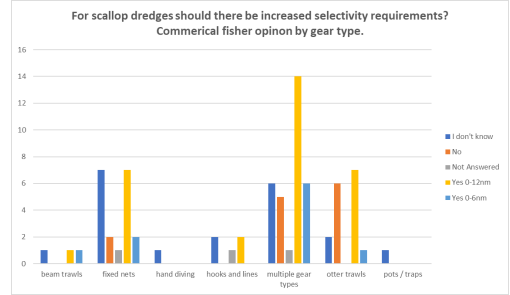
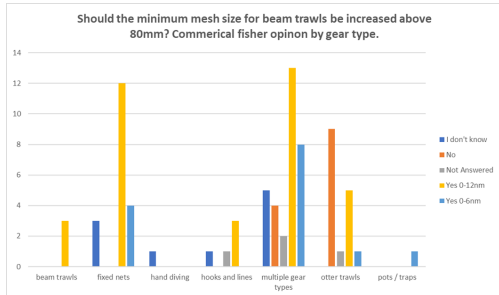
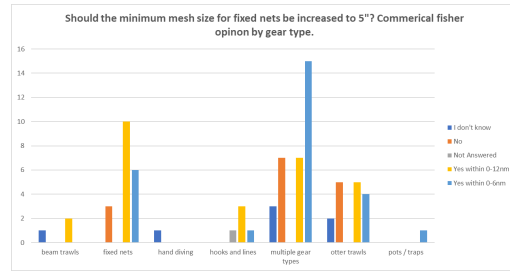
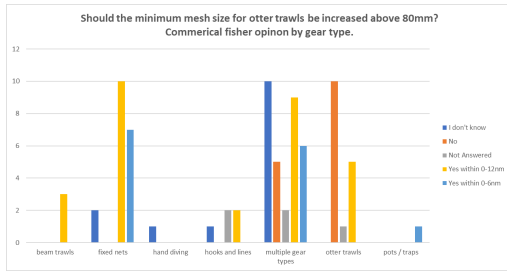
Commercial Fisher Opinion by Gear Type						
Gear type	I don't know	No	Not Answered	Yes inside 0-12nm	Yes inside 0-6nm	Yes in either 0-6nm or 0-12nm
beam trawls		1		1	1	2
fixed nets	2	12			5	5
hand diving	1					0
hooks and lines	3			1	1	2
multiple gear types	5	9	2	2	14	16
otter trawls		12		2	2	4
pots / traps		1				0
Grand Total	11	35	2	6	23	29
Percentage	14%	45%	3%	8%	30%	38%

Do you think there should be enhanced visibility requirements for fixed net markers in Lyme Bay e.g. the use of flags or specifically coloured marker buoys? When fishing for sole inside 30E6 and 30E7?



Commercial Fisher Opinion by Gear Type						
Gear type	I don't know	No	Not Answered	Yes inside 0-12nm	Yes inside 0-6nm	Yes in either 0-6nm or 0-12nm
beam trawls		1		2		2
fixed nets	2	5	1	6	5	11
hand diving	1					0
hooks and lines		1		2	2	4
multiple gear types	1	4		13	14	27
otter trawls		1		11	4	15
pots / traps					1	1
Grand Total	4	12	1	34	26	60
Percentage	5%	16%	1%	44%	34%	78%

Increases in mesh size / gear modifications?





Session 4 - Exploring the issues, options and aspirations

After the lunch break, the next session was introduced as an opportunity to build agreement on how best to work toward the aspirations expressed in the morning.

The facilitation team shared a suggested way of working through the list of aspirations, re-organised under 4 headings:

A: Communication

B: Gear

C: Policy/Rules

D: Overarching and data

It was agreed to go through each cluster in the order above, asking ourselves:

- What needs to change, short term and longer term?
- What management options could be considered?

A: Communication

- *Better communication across whole fleet*
- *Gear conflict needs more communication*
- *Better, broader communication across all aspects of fishing*
- More opportunities to come together and talk – today is a good example
- Improve the fishers WhatsApp group:
 - Increase numbers using it (currently about 40)
 - Keep it to business (no personal stuff)
 - Add numbers for trawlers (any commercial fisher is welcome to join the group)
 - Moderate size of location ‘boxes’
 - MMO to host annual meeting to review
 - Could be used to agree dates for effort on sole / whelks*
 - Need ID on all gear

It was agreed that fishers should continue to manage the WhatsApp group.

- Could do with system for reporting lost/damaged gear

* this point led to a discussion about the potential for agreeing sharing space/time and the action below.

N.B. Useful to learn lessons from the IPA (Inshore Potting Agreement). Ensure fishers are involved in management measures and take care not to go too formal too quickly. Need to look at representation issues.

ACTION:

MMO to set up possible zonation and time-sharing measures discussion group. Aim for this to happen January 2024 (with a view to having something agreed in place by ‘Spring 24’).

B: Gear

- *Amount and length of gear needs looking at (all types of pots and fixed net boxes)*
- *(Resolve ...) variety of efforts clashing – (gear) types and target catches*
- *Bycatch management (concern about using scallop dredgers to catch sole...)*
- Need another discussion about bycatch* and also to look at impact of scallop effort on sole. Noted that MMO will consider catches of sole in scallop dredges and include a response on this in their consultation response at the end of July – could be a graduated approach to introducing measures.

- Need for better marking of fixed nets etc so these are more visible and less likely to be damaged. Suggestion for colour coding system so each end and direction can be distinguished*
- MMO to consider whether or not to increase the minimum landing size of sole
- MMO to consider – potentially moving to a 5” gill net after taking other factors into account (e.g. economic impact)*

ACTION: MMO to include consideration of sole by-catch in the scallop fishery in the consultation response

ACTION: MMO to arrange another meeting to discuss spatial management of the different fisheries in Lyme Bay. Agreed that this meeting would be in January

ACTION: MMO to inform fishers of potential grants and how to access them that are available for purchasing fixed gear markers

ACTION: MMO to consider to increase minimum landing size of sole

ACTION: MMO to consider a potential increase in the minimum mesh size for gill nets after taking other factors into account

C: Policy/Rules

- *No change in fishing area (i.e. the current area fished, without further restrictions)*
- *Clear flagging and radar reflectors (fixed gear)*
- *Bycatch management (concern about using dredgers to catch sole...)*
- *Minimum landing size (desire for increase in minimum size)*
- *Discard ban (scallop dredgers impact on sole)*
- *Celebrity impact on policy (actually a concern relating to ‘Landing Obligation’)*
- *Beyond 12 mile fishing and scallop dredging - address impacts on inshore sole fishers*

It was agreed that discussion on the earlier items had covered these aspirations...

D: Overarching and data

- *Defra/MMO/IFCAs want to build more involvement of fishers in future directions (decisions)*
- *Better data and evidence to inform decisions*
- *Sustainability and precautionary principles to be fair and proportionate to different types of effort, flexible and adaptable*
- *Consider scale and size of issue - priorities? (need to prioritise time and effort needed to pursue aspirations/address concerns)*



- Noted recent issues with satellite vessel monitoring systems. Being resolved by the MMO
- Noted that there is a general issue regarding resources for data collection/management – never enough to do as much as you would like
- Need to re-think current data and future needs, making data more accessible and useful/usable
- Co-ordination between administrations very important
- Challenges noted re: developing a fair, representative system to bring all key stakeholders interests to the table for discussion or more widely in consultation

It was agreed that remaining aspirations expressed under D above had been covered under actions arising under other headings.

Session 5 - Next steps

In the final session of the day the group had the opportunity to offer any final advice to the MMO and also to share any reflections about the workshop before close.

Advice to MMO

- *The group was generally pleased with the relationship with the MMO and the improvements in communication – keep it up.*

About the workshop

Q: What might have improved the workshop today?

- *If we had asked a simple question – what's the problem?*
- *Pre-identify issues then give people a chance to prepare and seek other views*
- *Representatives from other types of fishery and ports – to reflect fuller range of interests*
- *Better data highly desirable*

Q: What went well about the workshop?

- *Feeling that we have been heard and had the chance to speak*
- *Good to hear different opinions*
- *Consultation process leading into today was done well (esp. using fishers to help define questions)*

CLOSE

The workshop was closed by Richard Hoskin from the MMO, who thanked everyone for their positive contributions, in what he felt had been a productive day which pointed the way forward for more positive engagement in future.



Attendees:

(arranged as per sub-groups for session 2).

Aubrey Banfield – local netter
John Hunkin – visiting netter
Chris Wayson – local trawler
Darren Passmore – visiting trawler
Richard Preston - Angler
Kailey Bissel – MSc Student
Sam Fanshaw – Env NGO
Tim Dixon – MMO

Gavin Ziemann – local netter
Steve Parker – local/visitor netter
Mark Cornwell – local trawler
Mike Ballinger – visiting trawler
Kyle Robinson – visiting netter
Mandy Wolfe – Lyme Bay CIC (all vessel)
Richard Hoskin – MMO
Rachel Holtby – MMO

Nigel Birt – local netter
Matt Hunkin – visiting netter
Westley Loveland – visiting trawler
Robert Preston – visitor, net and trawl
Grant Jones – Angler
Chloe North – Beam trawl / dredge – offshore fleet
Emma Sheehan – Science Rep.
Matt Mander – Devon and Severn IFCA
Ed Baker - MMO

3KQ Facilitation Team:

Richard Harris, lead facilitator
Carl Reynolds, support facilitator
Pippa Hyam, support facilitator



Annex:

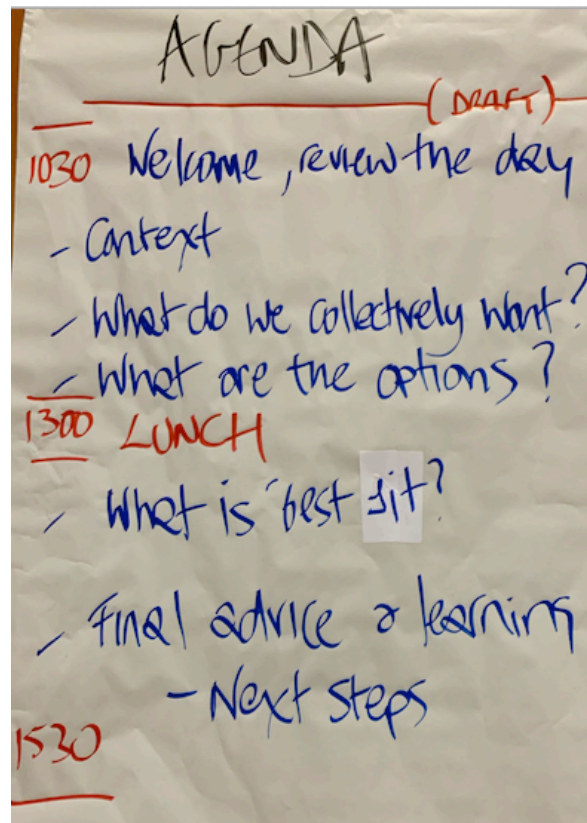
MMO Lyme Bay Sole Fishery Workshop Crowne Plaza Hotel, Plymouth 1030 – 1530; 19th June 2023

Photonote

About this photonote

This photonote is a collation of hand written notes taken by the workshop facilitation team in full view of the participants (any slides used during the workshop have also been included). The notes were written onto flipchart paper and are an attempt to capture the key points in the conversation (rather than every word spoken). At the end of the workshop the flipcharts were photographed and then later collated into this photonote.

The photonote is primarily intended for circulation to participants for completeness, transparency and to assist them in their recollection of the discussions in the workshop. For example, in the event of any sensitivity over interpretation of points in the workshop report it enables participants to check back over the original raw material the report is based on. The photonote is unlikely to be very useful to non-participants, who are more likely to be better served by the workshop report.



Session 1 - Context

MMO presentation of headlines from the social, environmental and economic aspects of the recent consultation and wider investigation into the sole fishery in Lyme Bay.



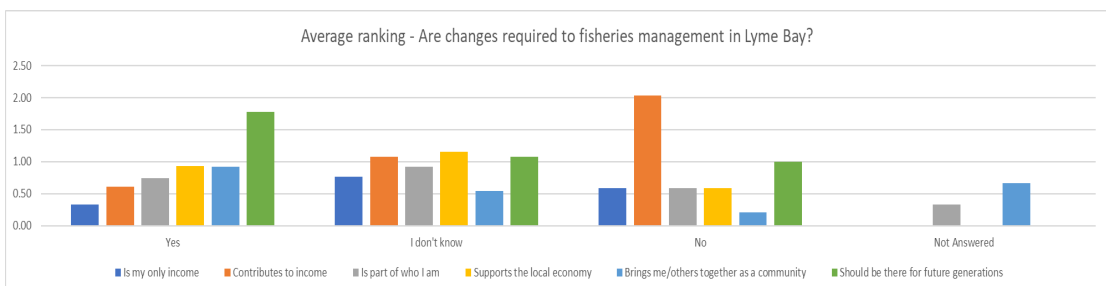
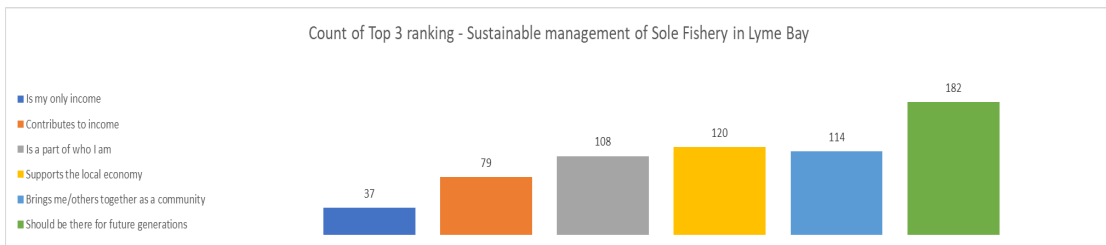
Lyme Bay Potential Management Measures for Sole Fishery

Social, Environmental and Economic Analysis Summary.

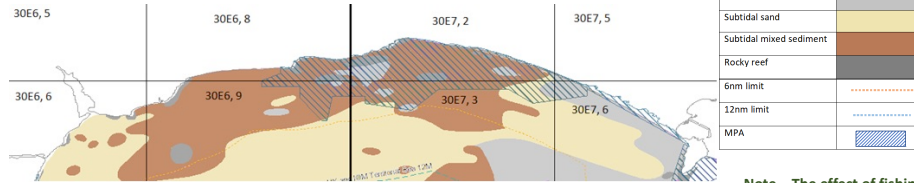
...ambitious for our seas and coasts



Social analysis - why the sustainable management of the Lyme Bay sole fishery is important.



Lyme Bay Sediment Types



Note – The effect of fishing on rocky reef is not considered here because reef features are enclosed within the MPA which has management measures in place.

Fishing pressure by gear type: Under-10m days at sea from Catch App 2022

	30E6			30E7		
ICES sub rectangle	6	8	9	2	3	6
Dredges	24					
Gill nets and entangling nets	63	4	363	84	325	352
Hooks and lines	59	47	127	8	137	322
Miscellaneous gear			95	53	91	48
Seine nets	2					
Traps	446	55	563	147	151	269
Bottom trawls	59		42	4	155	145
Total	659	114	1195	298	862	1132

Key

Subtidal sand	
Subtidal mixed sediment	
Subtidal coarse sediment	

Note - We are currently analysing VMS data to also include here.

Sediment Sensitivities

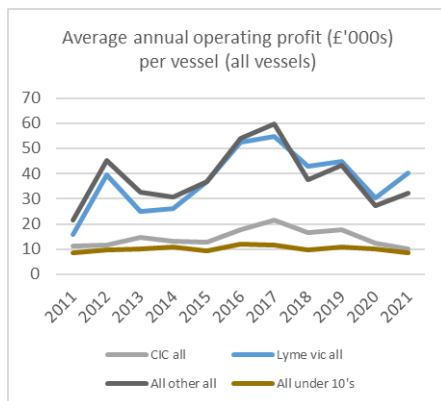
Gear type matrix	Nets and lines	Traps	Otter trawl	Beam trawl	Dredging
Subtidal sand	1	1	4	5	6
Subtidal coarse sediment	2	3	6	7	9
Subtidal mixed	2	3	9	9	9
Rocky reef	4	6	9	9	9

Note- Only the gear and sediment types listed have been considered in this risk matrix. Therefore this risk matrix is for representation of a relative comparison of these gear and sediment types only. The colour rating is NOT related to management actions and is for representation only.

An economic analysis of vessel income and costs was carried out by Seafish for all vessels with recorded landings of Sole from the ICES rectangles 30E7 and 30E6.

➤ The analysis was conducted using data from a national dataset created by Seafish which combines costs and earnings information from vessel accounts with effort, landings and capacity data.

- The data shows a reduction in average annual profit per vessel for all CIC vessels and all netters from any port.



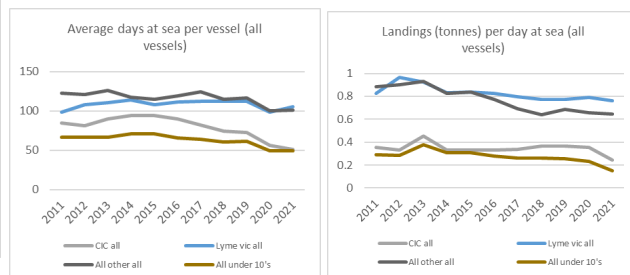
The vessels were grouped based on their home port and gear types used:

Community Interest Company (CIC), 51 vessels: Axmouth, Beer, Lyme Regies and West Bay.

Lyme Bay Vicinity (vic), 52 vessels: Weymouth, Portland, Exmouth, Exeter, Teignmouth and Brixham.

All Other Ports, 123 vessels.

- The reduction in operating profit is driven by a reduction in days at sea and landings and an increase in operating cost.



Questions, points and discussion following the presentation;

1
Clarification
Rachel

Presentations

- Q relationship between fishers from Lyme bay + Those that come from Margarey or further afield.
- Is this just community of Lyme Bay or other coastal communities? Boundary for consultation?
- Sole don't stay in Lyme Bay need to make most of fisheries while they are there!

ED #2

Is Sole caught using all these methods?

- ↳ no. The chart is gross data.
- ↳ an example of how you can plot effort.
- towing gear goes thru several habitats - hard to be precise about what is caught where
- MMO wanted to assess economic impact is 3 parts. 3 groups of vessels all catching sole (centre / periphery & Lyme Bay / elsewhere). Assess all catch.
- operating costs vary a lot

2

- chart showing profits
↳ shows Lyme Bay profits falling, less days at sea
- 52 vessels - based on those catching sole across 8 years
↳ sole move! less fish some years.
↳ profits based on all catch
- impact of Covid ... now starting to recover
- how do we know what's out there?
- CIC vessels smaller - more weather dependent
↳ how does this impact profits?
- increase in trawlers and impact on smaller boats effort - some abstain from fishing

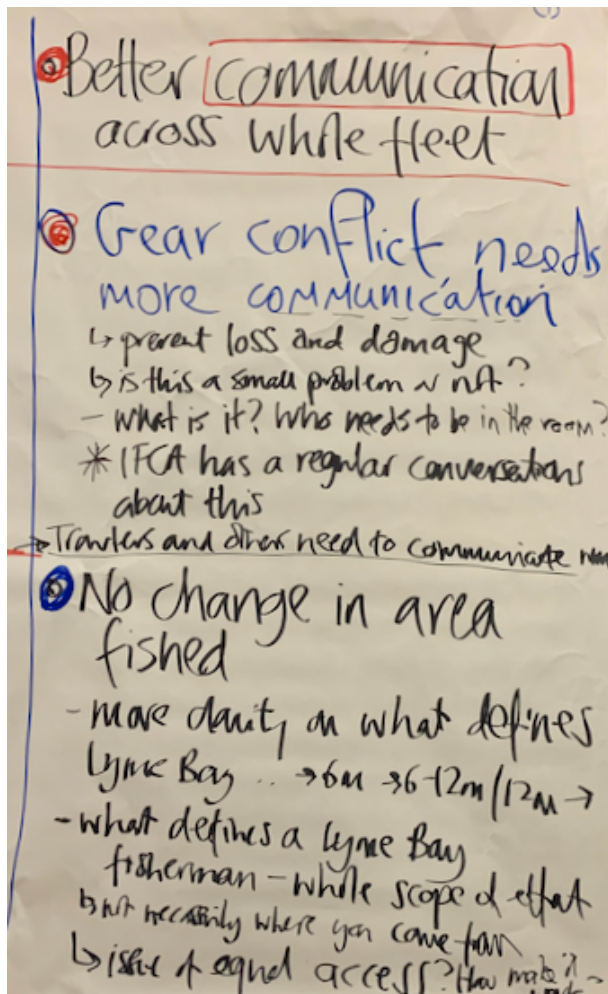
- relation between sole quota and these charts?
↳ charts are all catch
↳ as sole quota went up it had impact

Session 2 - Aspirations

(What do we collectively want?)

N.B. The original list was compiled in 2 stages – (i) in small groups generating agreed aspirations and then, (ii) collected, listed on flipchart and confirmed in plenary. The list was later re-ordered into 4 sub-headings to form an agenda for discussion after lunch.

Proposed and agreed headings:



- ① Clear flagging + radar reflectors
- sheer no. of radars causes problems ... needs clarifying
-
- ② Amount and length of gear needs looking at:
- ~~net~~ pots & boxes
wheel
-
- ③ varieties of efforts dishing?
* types and target catches
-
- ④ By-catch management
using dredgers to collect
sole - limiting what could be
~~as~~ caught with kit

Minimum landing size
 - impact on mesh size
 - how is this managed?
 - need to talk to each type of effort to discuss their particular needs (netter/trawler)
 - size of sole that can be caught
 - economic impact - various factors
 * NOT for this group to discuss

Data and evidence
 ↳ to better inform decisions

Discard ban / scallops / impact on quotas
 ↳ MMO rules
 ↳ 12 mile
 ↳ HFW!
 dredgers
 ↳ impact on sole

General aspiration for more broader communication with all aspects of fishing
 ↳ good thing to work together
 ↳ MMO / all types of effort / others?

DEFRA / IFCA / MMO want to build on more involvement of fishers in future directions
 ↳ white paper...
 ↳ Joint Fisheries Statement refers to working in partnership

celebrities impact on policy

Beyond 12 mile...
 - better vessels ... catch 70-80% of sole
 - legislation - scallop dredgers can catch sole ... impacts in-shore fisheries
 ↳ can amend the rules (MMO)

Review session 1
(4)

① Sustainability, and Precautionary Principles need to be fair and proportionate to different types of effort ... and be flexible to adapt as needed

② Need to consider Scale and Size of issue - what's really critical? Priorities eg impact can it be implemented?

Communication
Gear
Policy / Rules etc
Overarching + data

Session 3 - What are the options for management?

Before the lunch break, Ed Baker from MMO gave a short presentation on the potential management options for managing the sole fishery with reference to the consultation responses.



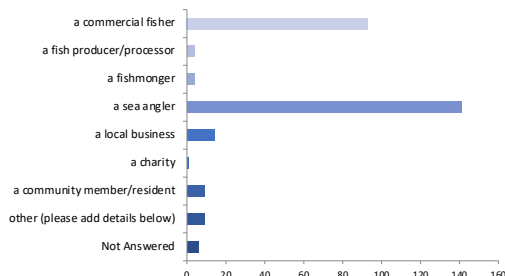
Lyme Bay Potential Management Measures for Sole Fishery

Consultation results summary

...ambitious for our seas and coasts

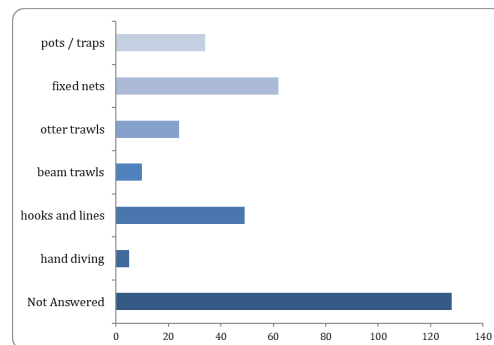


Respondent's occupation / organisation

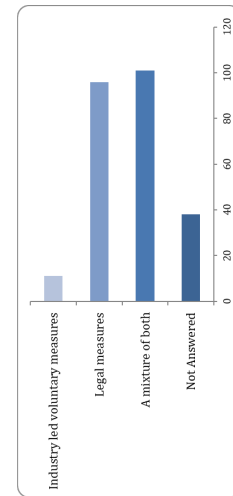
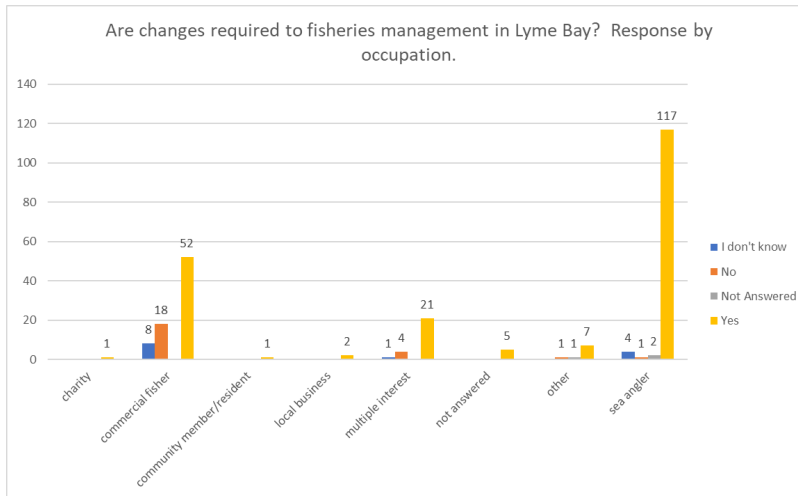


Option	Total	Percent
a commercial fisher	93	37.8%
a fish producer/processor	4	1.6%
a fishmonger	4	1.6%
a sea angler	141	57.3%
a local business	14	5.7%
a public body/council	0	0.0%
a charity	1	0.4%
a community member/resident	9	3.7%
other (please add details below)	9	3.7%
Not Answered	6	2.4%

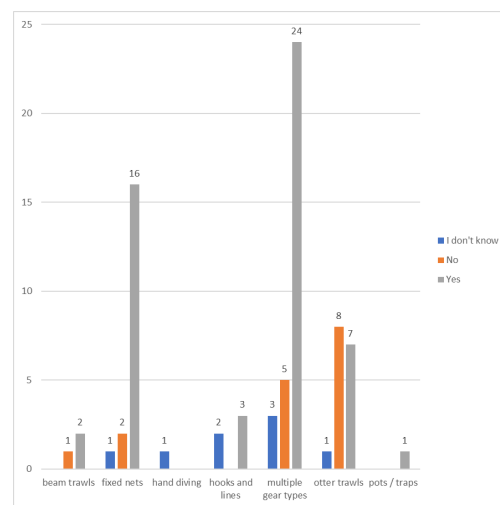
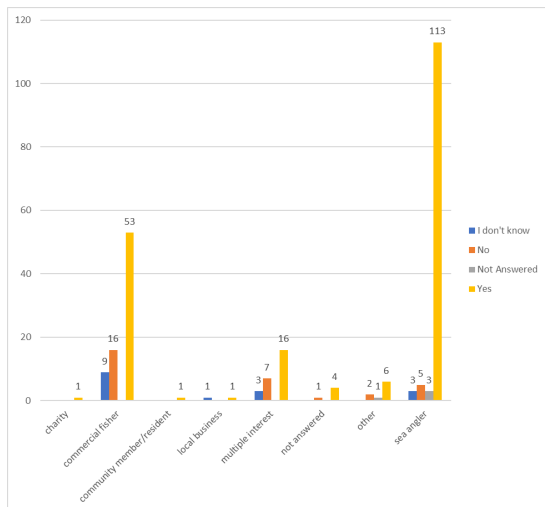
What gear type(s) do you use for fishing in Lyme Bay?



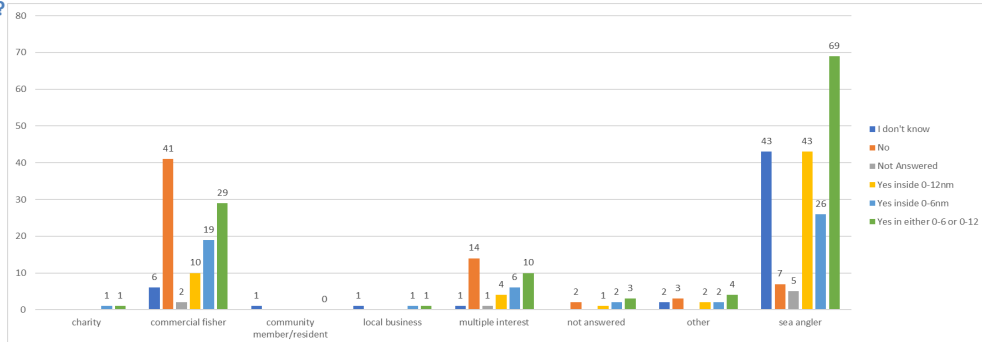
In your opinion are changes required to fisheries management in Lyme Bay?



In your opinion should there be an increase in the minimum landing size to 28cm for sole in 7.e to match the size at which 50% of sole are considered sexually mature.

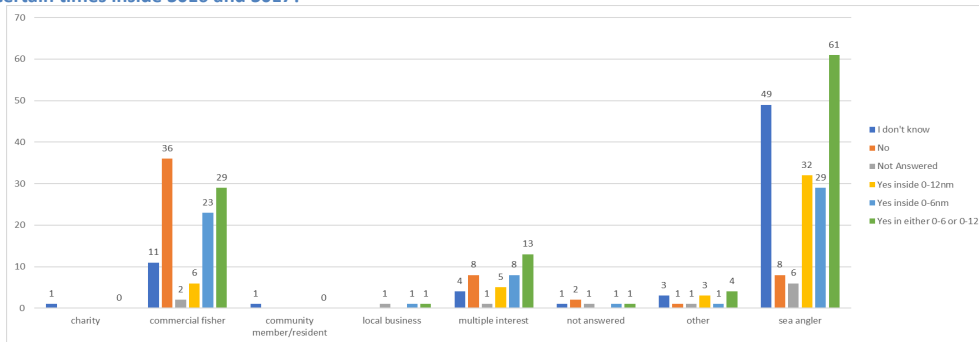


Do you think there should be a separate catch limit for sole when fishing inside 30E6 and 30E7 compared to the rest of Area 7.e?



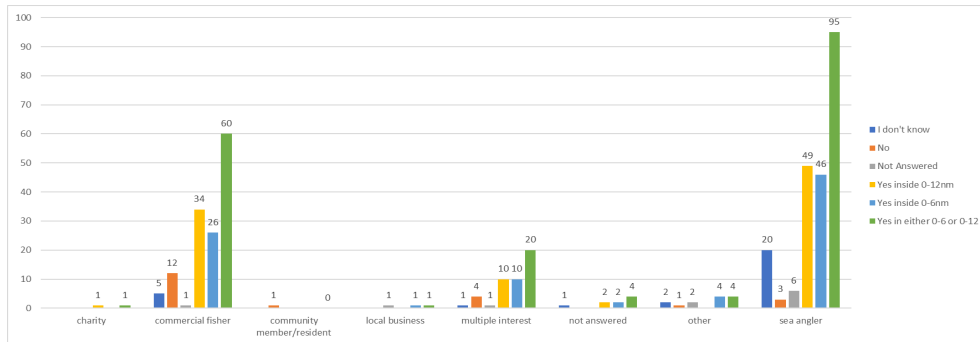
Gear type	I don't know	No	Not Answered	Yes inside 0-12nm	Yes inside 0-6nm	Yes in either 0-6nm or 0-12nm
beam trawls		2			1	1
fixed nets	1	14		1	3	4
hand diving	1					0
hooks and lines	2	1		1	1	2
multiple gear types	2	8	2	8	12	20
otter trawls		15			1	1
pots / traps					1	1
Grand Total	6	40	2	10	19	29
Percentage	8%	52%	3%	13%	25%	38%

Do you think that there should be some form of separation between the use of certain gear types in certain areas at certain times inside 30E6 and 30E7?



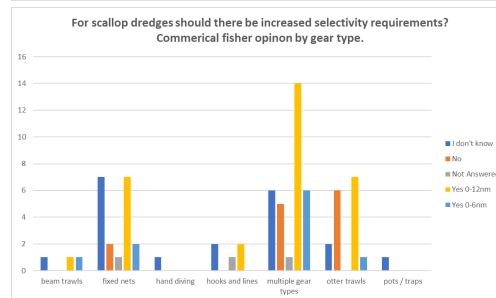
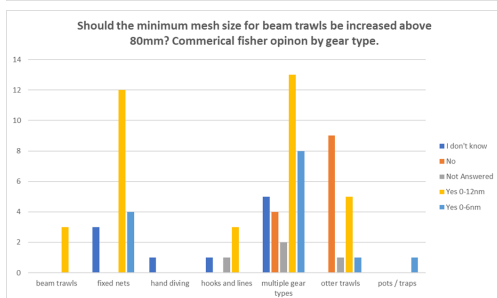
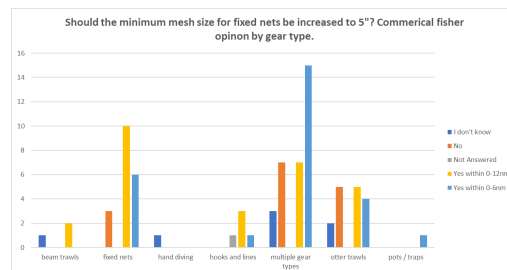
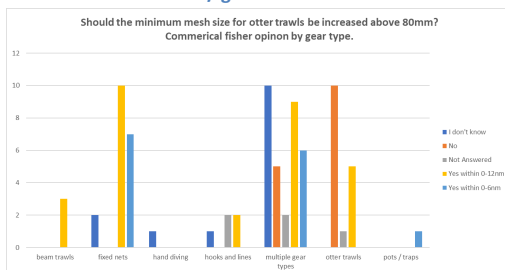
Gear type	I don't know	No	Not Answered	Yes inside 0-12nm	Yes inside 0-6nm	Yes in either 0-6nm or 0-12nm
beam trawls		1		1	1	2
fixed nets	2	12			5	5
hand diving	1					0
hooks and lines	3			1	1	2
multiple gear types	5	9	2	2	14	16
otter trawls		12		2	2	4
pots / traps		1				0
Grand Total	11	35	2	6	23	29
Percentage	14%	45%	3%	8%	30%	38%

Do you think there should be enhanced visibility requirements for fixed net markers in Lyme Bay e.g. the use of flags or specifically coloured marker buoys? When fishing for sole inside 30E6 and 30E7?



Gear type	I don't know	No	Not Answered	Yes inside 0-12nm	Yes inside 0-6nm	Yes in either 0-6nm or 0-12nm
beam trawls	0	1	0	2	0	2
fixed nets	2	5	1	6	5	11
hand diving	1	0	0	0	0	0
hooks and lines	0	1	0	2	2	4
multiple gear types	1	4	0	13	14	27
otter trawls	0	1	0	11	4	15
pots / traps	0	0	0	0	1	1
Grand Total	4	12	1	34	26	60
Percentage	5%	16%	1%	44%	34%	78%

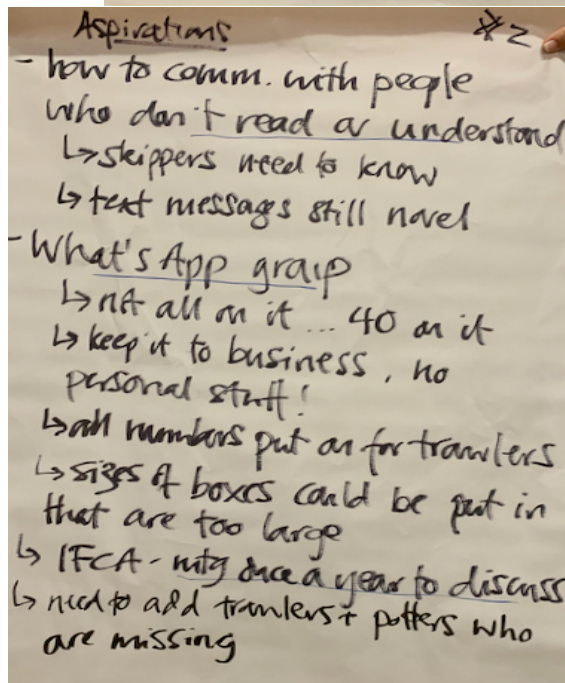
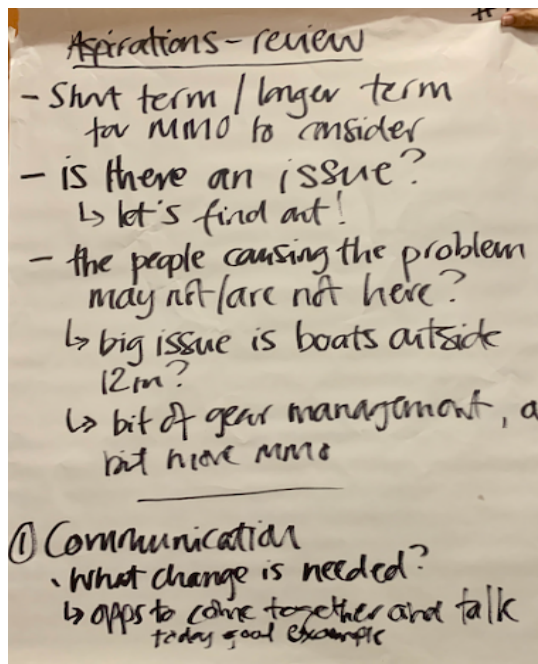
Increases in mesh size / gear modifications?



Management measures	Possible management Options
<ul style="list-style-type: none"> - Increase in min landing size for sole - Separate catch limit for Sole in particular area - Some form of separation between certain gear size + areas - Enhanced visibility requirement for fixed net / fixed gear - Gear Modification, net Mesh size or \leftrightarrow Scallop dredging 	<ul style="list-style-type: none"> - Do nothing - Increase in minimum landing size for Sole - Separate catch limit for Sole in particular areas - Separation \leftrightarrow Certain Gear types + size in diff areas - Enhanced requirement for fixed gear - Gear modification for different types of fishing

Session 4 - What does 'best fit' look like? (options and aspirations)

After the lunch break, the next session was introduced as an opportunity to build agreement on how best to work toward the aspirations expressed in the morning. The group worked in plenary, working through each of the 4 Aspiration clusters in turn. Notes where actions were agreed are boxed in red.



Aspirations #3

- MMO are in it. Best for fishers to manage it.
- MMO to review gear conflicts - convene mtgs.
- There are always people who don't cooperate
- Could agree dates for effort on side / effort on wheels
↳ share space/time
- need id on gear - should be done by law
- law wanting to be signed to address this
↳ but difficult to enforce
- MMO set up gear zonation discussions
↳ also need enforcement in gear marking
↳ temporal measures
↳ mutually agreed with fishermen ^{winter} ^{grass} ^{winter} ^{Oct/Nov}

Aspirations #4

- need last gear reports and analysis of fault... is it notified?
- unlicensed/unmarked gear is ~~not~~ an issue
- IFCA - nervousness about access - fishers have to be involved in management measures (IPA) - don't go formal too quickly
- mostly works... just a small minority need to get on board
- status quo at moment... needs to be in place for next Spring... MMO mtg to sort issues... end of year (Oct → Jan)
- who? IPA works as representation, but issue of who's missing! Need apps for wider industry

Aspirations

- course - process of decision making - who was involved - opps for wider input - conclusions
- ↳ MMO to convene

② Gear

What needs to happen?

- by catch ... need another discussion*
- MMO re-visit discard decision
- ↳ consequence is that beam trawlers together impacts stock.
- need to discuss impact of scallop effort on sole.*
- Scallop Industry Development Corp - is this being discussed? Probably not. MMO to raise issues - eg could have mgmt measures into Lyme Bay

Aspiration

- * MMO decision by end July on Scallop mgmt ... could be a graduated approach
- is this an issue that is widely known - it is a Lyme Bay issue - so not high on scallop industry agenda

③ ?

need for marking on lengths of nets - and the lengths of nets themselves - so crabbers can see

- ↳ colour coding different ends for direction (MMO) ... legislation?
- ↳ flags - southern/western ends
- need to agree colours
- ↳ 2008 Agreement - revisit this?

different regions/IFCAs/zones confuses this

Aspirations

- Size of Sole landed? (20% against in survey)
 - In gill net?
 ↳ fixed net people? Agreed Action
 ↳ MMO to consider / work out implementation taking other factors eg science

* This room isn't making decisions, but is making recommendations
 - need to inform net makers
 - legislation requires lead-in time

③ Policy / rules - * beyond 12 mile issue
 MMO to look at - scallops/sole

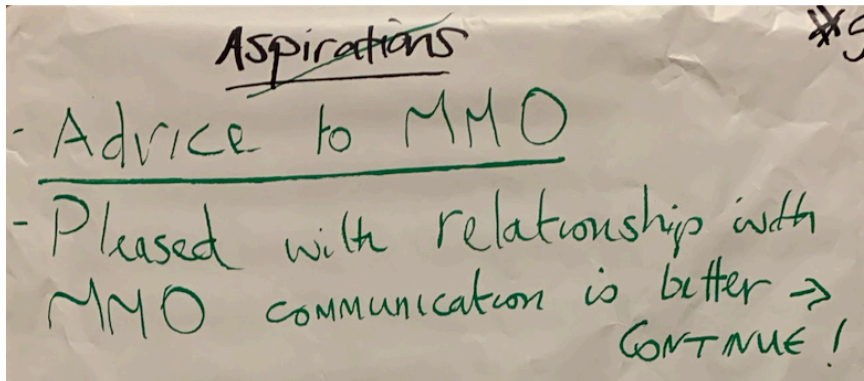
④ Overarching + data
 - update on Satellite systems?
 - need to analyse data and have specific location data needed

Aspirations

- data - resource issue
 - need to re-think / review current data and future needs
 - make more accessible and useable
 - Co-ordinate between administrations
- DEFRA lead policy in frame of ministerial priorities
- What data do anglers put in?
 ↳ trying to get anglers to share data, but hard to get them to do it
- Fisheries Management Plans
- concern that fishing organisations get seen as one respondent - when we are many.
 ↳ how best and fairly get equitable representation?
- Lyme Bay CIC - get all members to put in responses too.

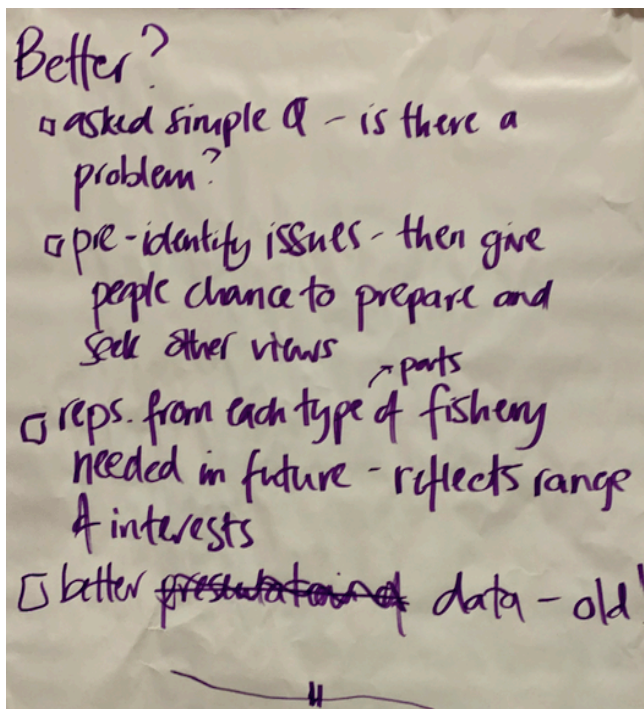
Session 5 - Next steps

In the final session of the day the group had the opportunity to offer any final advice to the MMO and also to share any reflections about the workshop before close.

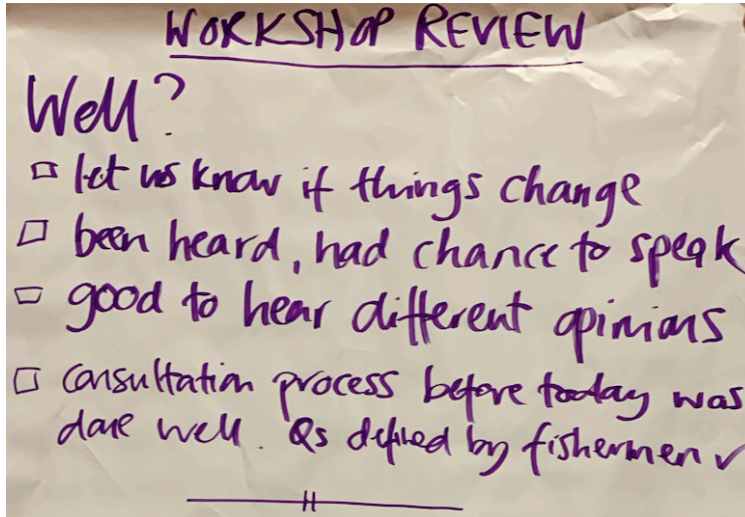


About the workshop

Q: What might have improved the workshop today?



Q: What went well about the workshop?



The workshop was closed by Richard Hoskin from the MMO, who thanked everyone for their positive contributions, in what he felt had been a productive day which pointed the way forward for more positive engagement in future.