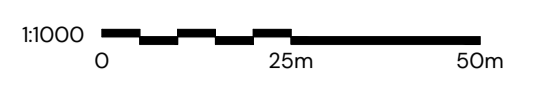
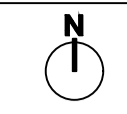
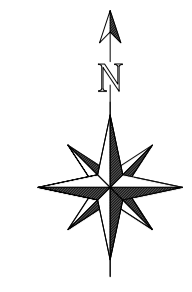
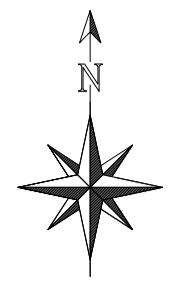
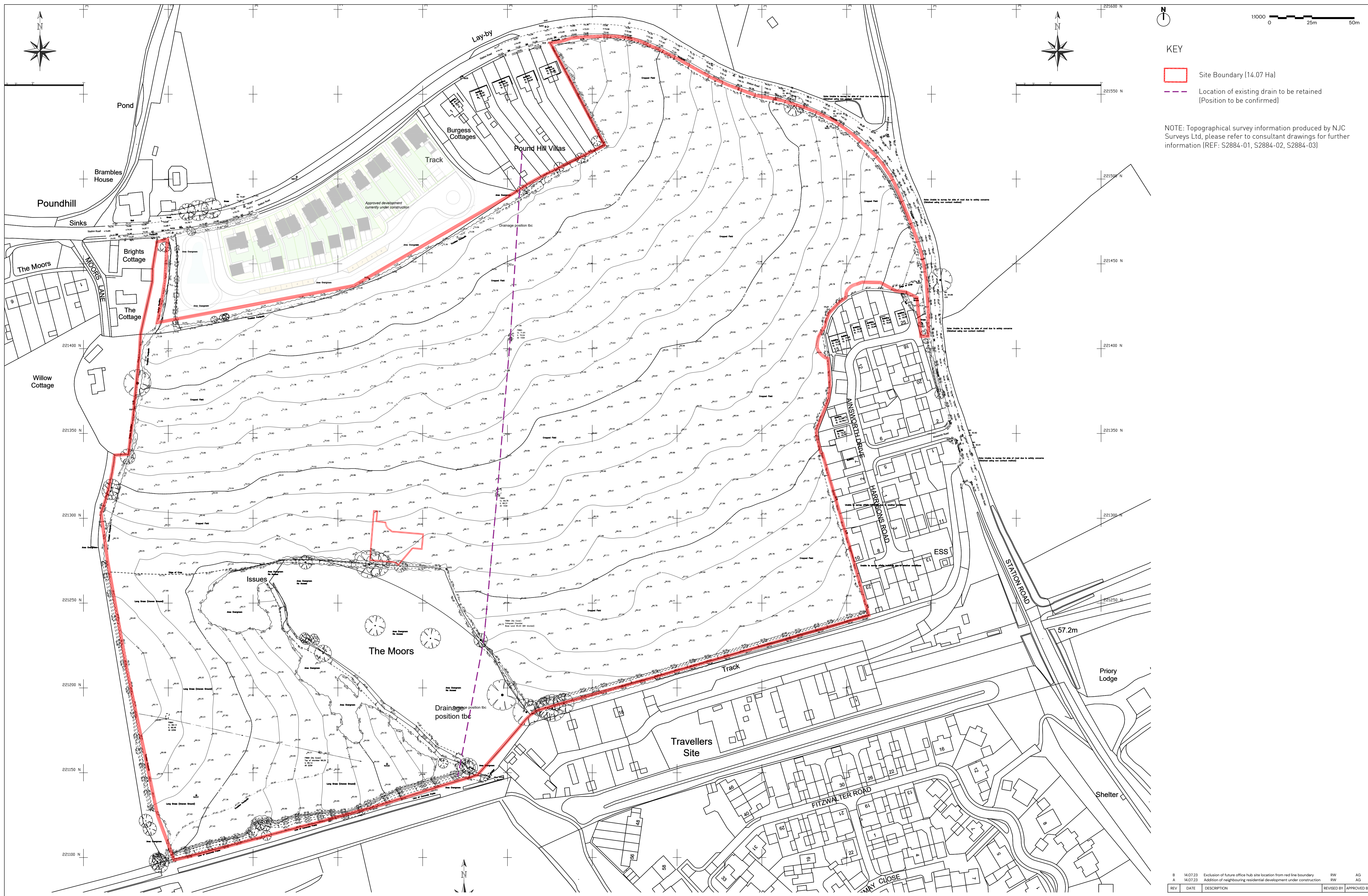


© Pegasus Planning Group Limited. © Crown copyright and database rights OS 100042093. Promap. Licence number 100020449. EmapSite Licence number 0100031673. Terms & Conditions @ pegasusgroup.co.uk



KEY

- Site Boundary (14.07 Ha)
- Location of existing drain to be retained (Position to be confirmed)

NOTE: Topographical survey information produced by NJC Surveys Ltd, please refer to consultant drawings for further information (REF: S2884-01, S2884-02, S2884-03)

REV	DATE	DESCRIPTION	REVISED BY	APPROVED BY
B	14/07/23	Exclusion of future office hub site location from red line boundary	RW	AG
A	14/07/23	Addition of neighbouring residential development under construction	RW	AG

Moors Field, Little Dunmow - Existing Site Layout

