



Cabinet Office



Easy  
Read

# Disability Action Plan

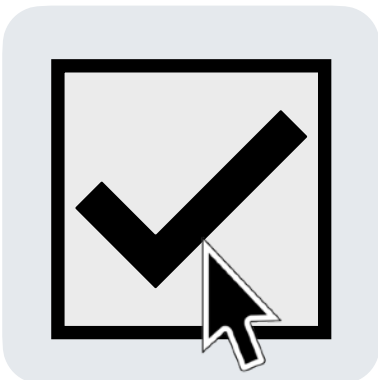
What do you think?



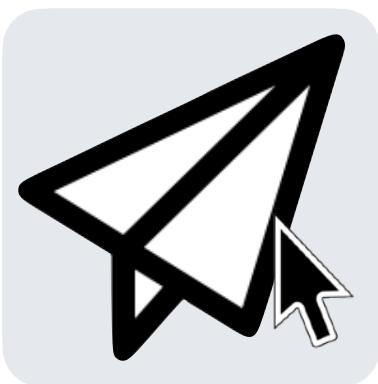
# How to use this survey on a computer



You can complete this survey on your computer. First you will need to download it.



When you open the survey on your computer, you will be able to click on the tick boxes and write in the text boxes.



When you have finished the survey, save it to your computer and email a copy to:

[disabilityactionplan@cabinetoffice.gov.uk](mailto:disabilityactionplan@cabinetoffice.gov.uk)

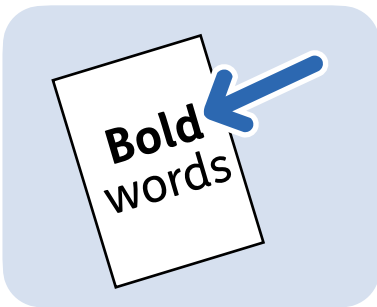
# Easy Read



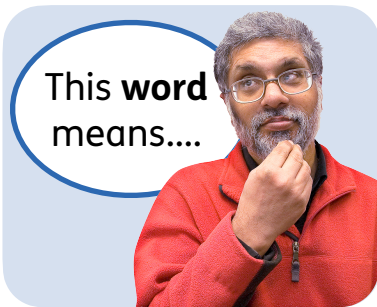
This is an Easy Read version of some information. It may not include all of the information but it will tell you about the important parts.



This Easy Read booklet uses easier words and pictures. You may still want help to read it.



Some words are in **bold** - this means the writing is thicker and darker.



These are words that some people will find hard. When you see a bold word, we will explain it in the next sentence.



Blue and underlined words show links to websites and email addresses. You can click on these links on a computer.

# What is in this booklet

About this booklet .....	4
A message from the Minister.....	6
Why we are asking what you think .....	7
The Government's plans for 2023 to 2024 .....	9
What do you think?.....	30
About you.....	63
Thank you.....	82



# About this booklet



The Government is working to improve the lives of disabled people.



These are our ideas on how we can do this in 2023 and 2024.



We want to know what you think.



Please read the information and answer the questions.

# Sending us your answers



Please send us your answers by 6 October 2023.

You can do this by:



- Post:  
Disability Action Plan team  
Disability Unit  
Cabinet Office  
Ground Floor  
10 Victoria Street  
London  
SW1H 0NB



- Email:  
[disabilityactionplan@cabinetoffice.gov.uk](mailto:disabilityactionplan@cabinetoffice.gov.uk)

# A message from the Minister



Tom Pursglove is the Minister for Disabled People, Health and Work.

He is a member of the Government.

He said:



'I would like to thank you for taking part in this **consultation**.

Together, we can change disabled people's lives for the better'.



A **consultation** means we are asking what you think.

# Why we are asking what you think



We want the UK to be a place where everyone is included.



We have already done a lot of work to improve life for disabled people.



Our Disability Action Plan explains what we will do next.



Our plan is a list of ideas for things that we can do now to improve the lives of disabled people.



Our plan includes ideas for different parts of the Government, called 'departments'.



We want to know what you think about these ideas.



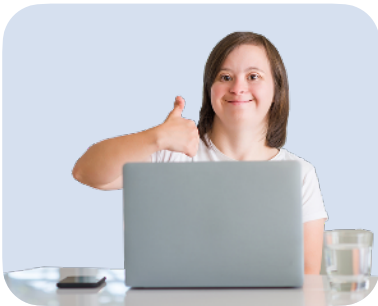
We will listen to what you tell us, and use it to help write our final Action Plan.

# The Government's plans for 2023 to 2024



This part explains what the Government will do in 2023 and 2024 to support disabled people.

## Taking part in government services



We will do more to help disabled people get government services online.

## People who have been in the armed forces



We will work on projects to support people who are disabled after being injured in the armed forces, like the army, navy or air force.



# Companies and jobs

We will:



- Find out what stops disabled people from starting their own companies.



- Support carers to take 1 week of unpaid time off from their jobs each year if they need it.



- Work with groups of disabled people to plan for new rules about working.



These rules will say that anyone can ask to work at times that are good for them - this is called 'flexible working'.

# Culture and sport



**Culture** includes art, theatre, films and museums.

We will:

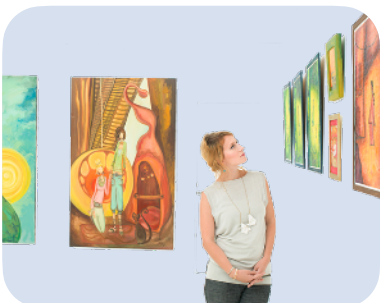
- Work on projects that will make it easier for disabled people to go to:



- The cinema.



- The theatre.



- Art galleries.

We will also:



- Support more cinemas, theatres and art galleries to work in ways that are good for autistic people.



- Make the UK the place in Europe that is easiest for disabled people to get around.



- Write plans to support more disabled people to take part in sport.



- Support social workers to help disabled people to take part in sport.

## The countryside



We will spend money on making parks, the countryside and forests easier for disabled people to get around.

# Schools and learning

We will:



- Build more new special schools - these are schools for children who need extra support to learn.



- Train more teachers and school staff who can work with disabled children.



- Spend more money on supporting disabled children to take part in **mainstream schools**.

**Mainstream schools** are the type of schools that most children go to.



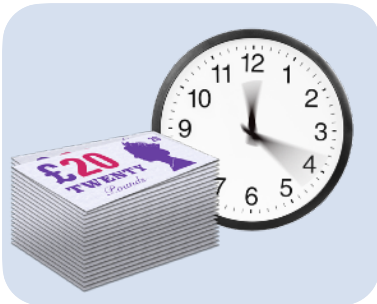
- Write guides about what support children should be getting at school.

We will also:



- Make it quicker and easier for children to get Education, Health and Care Plans.

These are plans that explain what extra support they need.



- Make it quicker for disabled students to get money for extra support.



- Spend money helping young disabled people to get jobs.



- Give money and support to families with disabled children who need extra help.



- Use a new way of finding **neurodiverse children** early, so they can get the support they need.

**Neurodiverse children** think in different ways to other children. Like, they may have autism.



We will also:



- Support more disabled children to learn a musical instrument.



- Make a new GCSE for British Sign Language.

## Heating and electricity



We will spend money making people's homes warmer.



This includes some disabled people's homes.



# Health and care

We will:



- Spend more money to improve **adult social care**.

**Adult social care** is care and support for people to live independently.



- Spend money to help disabled people make their homes easier to get around.



- Write guides to help services support people with Down Syndrome.



- Write new guides to help services support autistic people.

We will also:



- Carry on supporting more people with learning disabilities and autistic people to live at home, not in a hospital.



- Make sure health and care staff get training about learning disability and autism.



- Get better information about people with a learning disability or autism.



- Carry on supporting people's mental health in better ways.



- Carry on working on our plan to help people with rare diseases - these are diseases that not many people have.

We will also:



- Make sure that people can find out information about their health in ways they can understand.



- Make it easier for NHS staff to see if someone needs a **reasonable adjustment**.

**Reasonable adjustments** are changes that places and services can make so that disabled people can take part like everybody else.

# Homes, buildings and including everyone

We will:



- Find out more about what changes should be made to houses so that disabled people can use them.



- Change how house builders write plans for new houses, so it is easier for local people to have their say.



- Find out more about how to make disabled people's homes safer from fire.



- Work with estate agents to get them to talk more about how easy it is to get around houses.

We will also:



- Find out more about how much **supported housing** there is in the UK.

**Supported housing** is where you live somewhere that gives you extra support to live independently.



- Make a law to make local councils write plans about supported housing in their areas.



- Make more buildings safe and easy for disabled people to get around.



- Work to make it easier for disabled people to take part in **elections**.

**Elections** are where people vote to decide who should be in a council or government.



# Science and technology



We will spend money on projects that help disabled people understand what they see and read online.

## Transport



**Transport** is different ways of getting around, like trains, buses, cars and planes.

We will:



- Carry on making transport easier for disabled people to use.



- Check how easy all train stations are for disabled people to use.



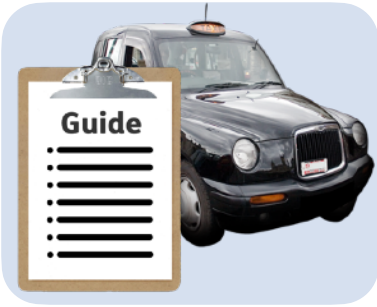
- Look at projects to make train stations easier for disabled people to use.



We will also:



- Find out what more we need to do to make trains easier for disabled people to use.



- Write new guides to help disabled people use taxis.



- Help bus drivers to make space for disabled people on buses.



- Find out more about how to make buses and coaches easier for disabled people to use.



- Write a new law to make taxi drivers get training on what disabled people need.

We will also:



- Change our service to make it faster for people to get a **Blue Badge**.

A **Blue Badge** lets you park your car in a special space if you are disabled or need some extra help.



- Train staff in airports to better help wheelchair users.



- Listen to what is important for disabled people when using transport.



- Make electric cars easier for disabled people to use.

# Work and pensions

We will:



- Work on our plan for a new law that will support disabled people to:
  - Start work.
  - Stay in work.
  - Do well in work.



We will spend money and train staff to do this.



- Test new projects to make it easier for disabled people to get benefits and support.



- Write new plans to support people who have been ill for a long time to go back to work.



We will also support more autistic people to get jobs.

## Around the world

We will:



- Follow our plan for how we will support countries around the world to include disabled people.



- Help disabled people around the world to take part in elections.



- Support other countries to get **assistive technology** that will help disabled people to live well.

**Assistive technology** is items like special computers that can make life easier for disabled people.

We will also:



- Make sure disabled people get the support they need after a disaster, like a flood.



- Include disabled people when we think about how to stop **climate change**.



**Climate change** is all about big changes in the weather. For example, storms getting worse than they used to be. Or having less rain in some places.



These changes will make the lives of people, plants and animals around the world harder.



# Police and border staff



**Border staff** check who is coming in and out of the UK.

**Border Staff** are like police officers but they look after airports and ports.



We will:

- Train some border staff in British Sign Language.



- Protect disabled people from **abuse** in their homes.

**Abuse** is when someone hurts you or treats you badly.



- Spend money supporting organisations that are run by disabled people or others to:

- Support disabled victims of **domestic abuse**.

**Domestic abuse** is when you are hurt or treated badly by someone you are close to.



## Armed forces



We will support our staff who are carers.

## Courts and prisons

We will:



- Make sure the courts and prisons work well for neurodiverse people.



- Look at how people get **reasonable adjustments** in court.

**Reasonable adjustments** are changes that places and services can make so that disabled people can take part like everybody else.

# Civil servants



**Civil servants** are staff who work for the Government.

We will:



- Support disabled civil servants.



- Look at getting more disabled people to become civil servants.

# What do you think?



This part explains what the Disability Unit will do and how it will help the Government with its work in 2023 and 2024.

The Disability Unit works with all the different parts of the Government to improve the lives of disabled people.



Please answer these questions to tell us what you think of our plans.

## Elected office



**Elected office** means working as a councillor or Member of Parliament. To work in elected office, people need to vote for you.



There are not enough disabled people working in elected office.



We would like to look at ways to make sure that disabled people have help to pay for the extra support they need to work in elected office.



We are also thinking of making a website with information and training.



**Question 1a:** Do you agree or disagree with our plans to support disabled people to work in elected office?

Agree a lot

Agree a little

Neither agree nor disagree

Disagree a little

Disagree a lot

Don't know



**Question 1b:** If you want to, please tell us why you think this.

A large, empty rectangular box with a black border, intended for the user to provide an answer to Question 1b.



**Question 1c:** If you know about any training that already exists, please tell us about it here.

A large, empty rectangular box with a black border, intended for the user to provide an answer to Question 1c.

# Accessible playgrounds



**Accessible playgrounds** are playgrounds that disabled children can use.



We would like to make a website with information about accessible playgrounds.



This website will help local councils make more playgrounds accessible.



**Question 2a:** Do you agree or disagree that we should make a website for councils to find information on accessible playgrounds?

Agree a lot

Agree a little

Neither agree nor disagree

Disagree a little

Disagree a lot

Don't know



At the moment, not all playgrounds need to be accessible playgrounds.



We would like to look at making more playgrounds accessible.



**Question 2b:** Do you agree or disagree that we should make as many playgrounds accessible as we can?

Agree a lot

Agree a little

Neither agree nor disagree

Disagree a little

Disagree a lot

Don't know





I think  
this  
because...

**Question 2c:** If you want to, please tell us why you think this.

A large, empty rectangular box with rounded corners and a black border, intended for the student's response to the question.

# Planning for emergencies



**Emergencies** are serious things that can hurt people. They include floods and diseases.



We want to include disabled people more when we plan for emergencies.



We would like to do this by working more with groups of disabled people.



**Question 3a:** Do you agree or disagree that we should talk more to disabled people about emergency planning?

Agree a lot

Agree a little

Neither agree nor disagree

Disagree a little

Disagree a lot

Don't know



**Question 3b:** If you want to, please tell us why you think this.

A large, empty rounded rectangular box with a black border, intended for the user to provide an answer to Question 3b.



**Question 3c:** Are there any groups of disabled people that you think we should listen to?

A large, empty rounded rectangular box with a black border, intended for the user to provide an answer to Question 3c.

# Climate change



When climate change happens, we will need to make changes to how we live. This is called 'climate adaptations'.



We think we should include disabled people more when we think about climate adaptations.



**Question 4a:** Do you agree or disagree that we should spend more time working on climate adaptations?

Agree a lot

Agree a little

Neither agree nor disagree

Disagree a little

Disagree a lot

Don't know



**Question 4b:** Please tell us if there is anything more the Government should do to include disabled people in climate adaptations.

We mainly want to know about things we can do in 2023 to 2024.



We are already thinking about including disabled people in:

- Clean Air Zones (CAZ).
- Ultra Low Emission Zones (ULEZ).



These are ways of making the air cleaner.



**Question 4c:** Please tell us if there are any more climate adaptations that you think we should think about.



# Disability Enabled Badge

**Disability Enabled**

We are thinking of creating a 'Disability Enabled Badge'.



This will be a way for companies and services to show that they have given their staff training about disability.



This will make it easy for disabled people to see which companies and services have had training.



**Question 5a:** Do you agree or disagree that this would make it easier for disabled customers to know which companies or services have trained their staff about disability?

Agree a lot

Agree a little

Neither agree nor disagree

Disagree a little

Disagree a lot

Don't know



**Question 5b:** If you want to, please tell us why you think this.

## Special Olympics



The **Special Olympics** is an event where people with learning disabilities from around the world play sport against each other.



We are thinking about if the Special Olympics could happen in Britain in 2031.

Having the Special Olympics in Britain would:



- Support people to learn more about people with learning disabilities.



- Support more people with learning disabilities to take part in sport.



**Question 6a:** Do you agree or disagree with our idea to have the Special Olympics in Britain?

Agree a lot

Agree a little

Neither agree nor disagree

Disagree a little

Disagree a lot

Don't know



**Question 6b:** If you want to, please tell us why you think this.

A large, empty rounded rectangular box with a black border, intended for the user to provide their answer to Question 6b.



**Question 6c:** Please tell us about any disability sport organisations that you think we should work with.

A large, empty rounded rectangular box with a black border, intended for the user to provide their answer to Question 6c.

# Guide dogs



The law says that companies cannot stop a person with a guide dog from coming into their building.



If a company does stop a person with a guide dog, this is called an 'access refusal'.



We want to do more to stop access refusals.



We will work with guide dog organisations to do this.



This might include making companies pay more money to us if they do it. This is called a fine.



**Question 7a:** Do you agree or disagree with our plan to find out what we can do to stop access refusals?

Agree a lot

Agree a little

Neither agree nor disagree

Disagree a little

Disagree a lot

Don't know



**Question 7b:** Should we make companies pay bigger fines for access refusals?

Agree a lot

Agree a little

Neither agree nor disagree

Disagree a little

Disagree a lot

Don't know





**Question 7c:** If you want to, please tell us why you think this.

A large, empty rounded rectangular box with a black border, intended for the user to provide their answer to Question 7c.

# Assistive technology



**Assistive technology** is items like special computers that can make life easier for disabled people.



We want to do more to help people understand assistive technology and what it can do.



If the Government knows all about new assistive technology, it can support disabled people to use it.



**Question 8a:** Do you agree or disagree that more disabled people would know about and could use assistive technology if the Government knew more about it, and could tell them about it?

Agree a lot	Agree a little	Neither agree nor disagree	Disagree a little	Disagree a lot	Don't know
<input type="checkbox"/>	<input type="checkbox"/>	<input type="checkbox"/>	<input type="checkbox"/>	<input type="checkbox"/>	<input type="checkbox"/>



**Question 8b:** If you want to, please tell us why you think this.

## Chances for disabled children



We want disabled children to:

- Be happier.
- Get more chances in life.



We want to make a team to do this.

Different parts of the Government would work on this.



We would get different services that support disabled children to work together.



The team would think about issues that affect disabled children, like:

- Becoming an adult.
- Getting around.
- Bullying.
- Being safe.
- Finding out what support they need.
- Support for their families.

**Question 9a:** Do you agree or disagree that this team should look at:



**i:** Becoming an adult?

Agree a lot

Agree a little

Neither agree nor disagree

Disagree a little

Disagree a lot

Don't know



**ii:** Getting around?

Agree a lot

Agree a little

Neither agree nor disagree

Disagree a little

Disagree a lot

Don't know



**iii: Bullying, being safe and happy?**

Agree a lot	Agree a little	Neither agree nor disagree	Disagree a little	Disagree a lot	Don't know
<input type="checkbox"/>	<input type="checkbox"/>	<input type="checkbox"/>	<input type="checkbox"/>	<input type="checkbox"/>	<input type="checkbox"/>



**iv: Finding out sooner what support disabled children and their families need?**

Agree a lot	Agree a little	Neither agree nor disagree	Disagree a little	Disagree a lot	Don't know
<input type="checkbox"/>	<input type="checkbox"/>	<input type="checkbox"/>	<input type="checkbox"/>	<input type="checkbox"/>	<input type="checkbox"/>





I think  
this team  
should  
work on...

**Question 9b:** If you want to, please tell us if you think there are any other issues this team should work on.

We mainly want to know about things we can do in 2023 to 2024.

A large, empty rounded rectangular box with a black border, intended for the user to write their response to the question. It is positioned below the question text and occupies the lower right portion of the page's main content area.

# Support for disabled parents



We would like to create a team to give more support to disabled parents.

Different parts of the Government would work together on this team.

They would think about issues that affect disabled parents, like:



- Getting support to be a parent from health and care services.



- **Family Court** and **child protection**.

**Family Court** decides where a child will live after their parents split up.

**Child protection** makes sure children are safe.



They would also think about **domestic abuse** support.

**Domestic abuse** is when you are hurt or treated badly by someone you are close to, like a husband, wife or family member.

**Question 10a:** Do you agree or disagree that this team should look at:



**i:** Getting more support to be a parent from health and care services?

Agree a lot	Agree a little	Neither agree nor disagree	Disagree a little	Disagree a lot	Don't know
<input type="checkbox"/>	<input type="checkbox"/>	<input type="checkbox"/>	<input type="checkbox"/>	<input type="checkbox"/>	<input type="checkbox"/>



### ii: Family Court and child protection?

Agree a lot

Agree a little

Neither agree nor disagree

Disagree a little

Disagree a lot

Don't know



### iii: Domestic abuse support?

Agree a lot

Agree a little

Neither agree nor disagree

Disagree a little

Disagree a lot

Don't know



**Question 10b:** Are there any other issues that you think this team should work on?

We mainly want to know about things we can do in 2023 to 2024.

# Information about disabled people



When we use a project or service to improve the lives of disabled people, we look at information.



This information helps us see if we have made a difference.



But we think it is also important to listen to what disabled people say.

They can tell us more about what really makes a difference in their lives.



**Question 11a:** Do you agree or disagree that we should set up a group of disabled people, to listen to what they say, as well as looking at information?

Agree a lot

Agree a little

Neither agree nor disagree

Disagree a little

Disagree a lot

Don't know



**Question 11b:** If you want to, please tell us why you think this.

# The future



We want to look at what issues disabled people might have in 5, 10 and 20 years' time.



This will help us to:

- Think about what new issues we may need to look at.
- Make plans for the future.



If we do this, we may need to spend less time thinking about what issues disabled people have now.





**Question 12a:** Do you agree or disagree that we should think about issues disabled people might have in the future, as well as things we already know about?

Agree a lot

Agree a little

Neither agree nor disagree

Disagree a little

Disagree a lot

Don't know



**Question 12b:** If you want to, please tell us why you think this.

# All our work




We would like to know what you think of all the Government's work.

This includes the work we talked about on pages 9 to 29.

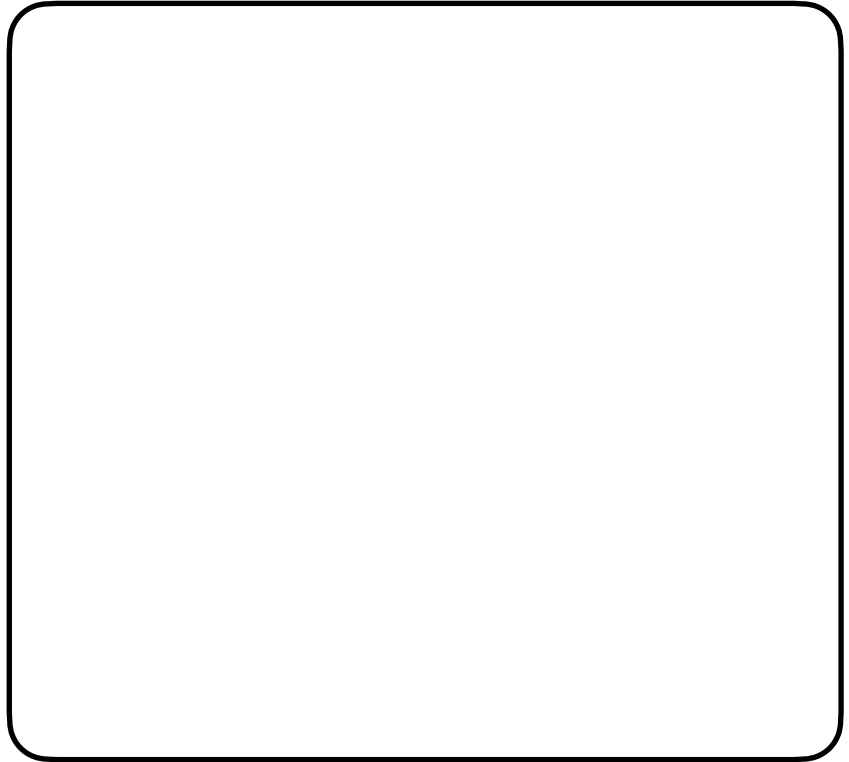


**Question 13:** What do you think of our plans for 2023 to 2024?



I think  
you  
could...

**Question 14:** What different things could the Government do to support disabled people?



# About you



This part asks about you, or the organisation you are answering for.



This will help us understand what different groups think about our plans.



**Question 15:** Are you answering for yourself, or for an organisation?

For myself

For an organisation

## If you are answering for yourself



Please only answer these questions if you are answering for yourself.



### Question 16a: Are you...?

Disabled

Neurodiverse - this means your brain works differently to most people. Like, you may be autistic.

d/Deaf - this means you may have difficulty hearing, or you cannot hear. You may use sign language.

None of these

Other, please say:

Prefer not to say



**Question 16b:** Do you have any health issues or illnesses that affect your life in these ways?

Seeing

Hearing

Moving around

Lifting and carrying things, or using a keyboard

Learning or understanding

Remembering

Mental health

Having enough energy to do things or breathing

Spending time with others

None of these

Prefer not to say

Other (please say)





**Question 17:** Where do you mostly work?

England

Northern Ireland

Scotland

Wales

I do not have a job

Other (please say)



### Question 18: What is your **ethnic group**?

Your **ethnic group** is your race, background or the country that your family came from.



#### **White**

English, Welsh, Scottish, Northern Irish, British

Irish

Gypsy or Irish Traveller

Roma

Any other white background



### **Mixed or more than 1 ethnic group**

- White and black Caribbean
- White and black African
- White and Asian
- Any other mixed or multiple ethnic groups



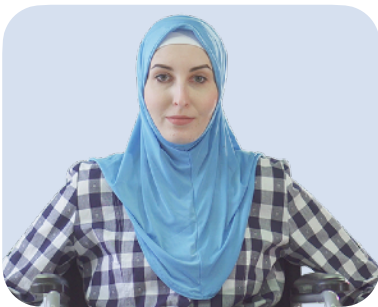
### **Asian or Asian British**

- Bangladeshi
- Chinese
- Indian
- Pakistani
- Any other Asian background



### **Black, black British, Caribbean or African**

- Caribbean
- African
- Any other black, black British, Caribbean or African background



### **Other ethnic groups**

- Arab
- Other ethnic group (please say)

- Prefer not to say

**Question 19: What is your religion?**



No religion

Christian

Buddhist

Hindu

Jewish

Muslim

Sikh

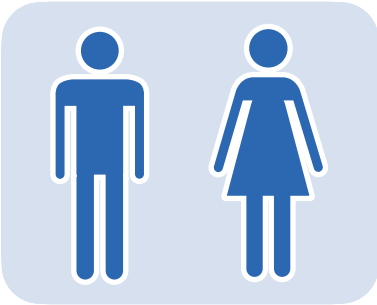
Any other religion (please say)

Prefer not to say



**Question 20:** How old are you?

Prefer not to say

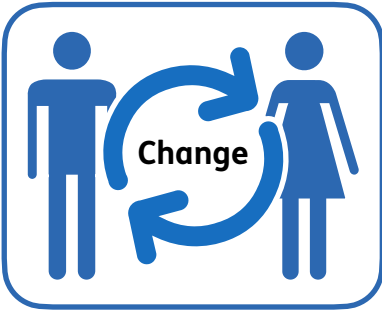


**Question 21:** What is your sex?

Female

Male

Prefer not to say



**Question 22:** Is your **gender** the same as the one you had when you were born?

**Gender** is whether you see yourself as a man, a woman, or something else. Your gender may be different to the one you had when you were born.

Yes

No (please tell us your gender)

Prefer not to say





### Question 23: What is your **sexual orientation**?

Your **sexual orientation** is who you are attracted to, like men, women or both.

- Straight - this means you are attracted to people of the opposite gender
- Gay or lesbian - this means you are attracted to people of the same gender
- Bisexual - this means you are attracted to people of both genders
- Other sexual orientation (please say)
- Prefer not to say



**Question 24:** When you were 14, what was the job of the person who earned the most money in your house?

This may have been your mum, dad or another grown-up who looked after you.

A job like a teacher, nurse, social worker, musician, police officer, lawyer or scientist

A manager, like the manager of an office, business, restaurant, bank or warehouse

Office staff, like an assistant, call centre worker, or a nurse at a nursery

A job like a plumber, printer, gardener or train driver

A job like a post worker, security guard, caretaker, farm worker, lorry driver, cleaner, cook, waiter or waitress

They did not have a job for a long time

They owned a small company, like a shop, cafe or garage.

Prefer not to say

Other (please say)

# If you are answering for an organisation



Please only answer these questions if you are answering for an organisation.



**Question 25:** What type of organisation are you answering for?

An organisation of disabled people

A charity

A social enterprise - this is a company that works to improve life for others

A trade union - this is an organisation that speaks up for workers

A company

An 'umbrella organisation' -  
this is an organisation that is  
made up of a lot of smaller  
organisations

Other (please say)



**Question 26a:** Does your organisation  
speak up for people, or for other  
organisations?

People

Organisations



**Question 26b:** How many members does your organisation have?

1 to 24

25 to 249

250 to 999

More than 1000



**Question 27:** Where does your organisation work?

England

Wales

Scotland

Northern Ireland

Britain - this is England, Wales and Scotland

UK - this is England, Wales, Scotland and Northern Ireland

Around the world

Other (please say)



**Question 28:** What is your job in the organisation?

Manager of the organisation

In charge of a group of organisations

Trade union representative - this means you are someone who speaks up for workers at your organisation



HR Professional - this means you are a member of staff who supports other staff in your organisation

Policy or research professional - this means you look into different ways your organisation, or the country, could be run

Communications and campaigns - this means letting the public know about your organisation's work

Diversity and inclusion professional - this means you make sure your organisation is being fair to everyone

Other (please say)

# Thank you



Thank you for answering our questions.

Please send them back to us by:



- Post:  
Disability Action Plan team  
Disability Unit  
Cabinet Office  
Ground Floor  
10 Victoria Street  
London  
SW1H 0NB



- Email:  
[disabilityactionplan@cabinetoffice.gov.uk](mailto:disabilityactionplan@cabinetoffice.gov.uk)

You can contact us by email or phone us on 0808 175 6420 if you have any questions, or need extra copies.

This Easy Read booklet was produced by [easy-read-online.co.uk](http://easy-read-online.co.uk)  
The booklet includes images licensed from Photosymbols & Shutterstock.