



FIRE SAFETY INFORMATION NOTICE

ISSUED BY: HMPPS FIRE SAFETY TEAM

SUBJECT:

PSI 09/ 2016 Annex A – Searching procedures – Accommodation fabric checks

Checking of Fire Detection Devices for Cells/ Bedrooms

PURPOSE:

To provide prison officers with guidance for the checking of fire detection devices for cells/ bedrooms

INFORMATION:

Fire Warning and Detection

It is HMPPS policy that all prison cells are provided with fire detection devices, either in the cell or outside of the cell, but in the path of the expected smoke flow. The early warning of fire in a cell is essential to safeguard life.

We are required by law to ensure that suitable and sufficient fire detection measures are in place to ensure that fire is discovered at an early stage, to provide warning to those persons effected by that fire and to alert prison staff who form part of the emergency fire response plan.

Annex A of PSI 09-2016 will be updated with the lines below at the next review and will include the requirement to check fire detection devices as part of the routine 'Accommodation Fabric Checks'. After reviewing your current health and safety risk assessments and safe systems of work with your local POA branch committee, this action should be included in this check with immediate effect

Fire Detection Devices

- *Check the device is present (fixed to ceiling or wall), not covered/ obstructed, or damaged.*
- *Where fire detection devices are concealed behind protective enclosures/ ventilation grilles, check that grilles or enclosures are not blocked or obstructed.*
- *Where it is identified that the fire detection device is blocked, obstructed, damaged or not present, the officer carrying out the checks is to inform the facilities management provider at the earliest opportunity in line with local procedures.*

The attached guidance note (FSIN 010(A)) has been produced by the HMPPS Fire Safety Team to assist operational staff undertake such checks.

Picture set 1- Smoke detectors in cells



Picture set 2- Domestic smoke detectors located outside of cells



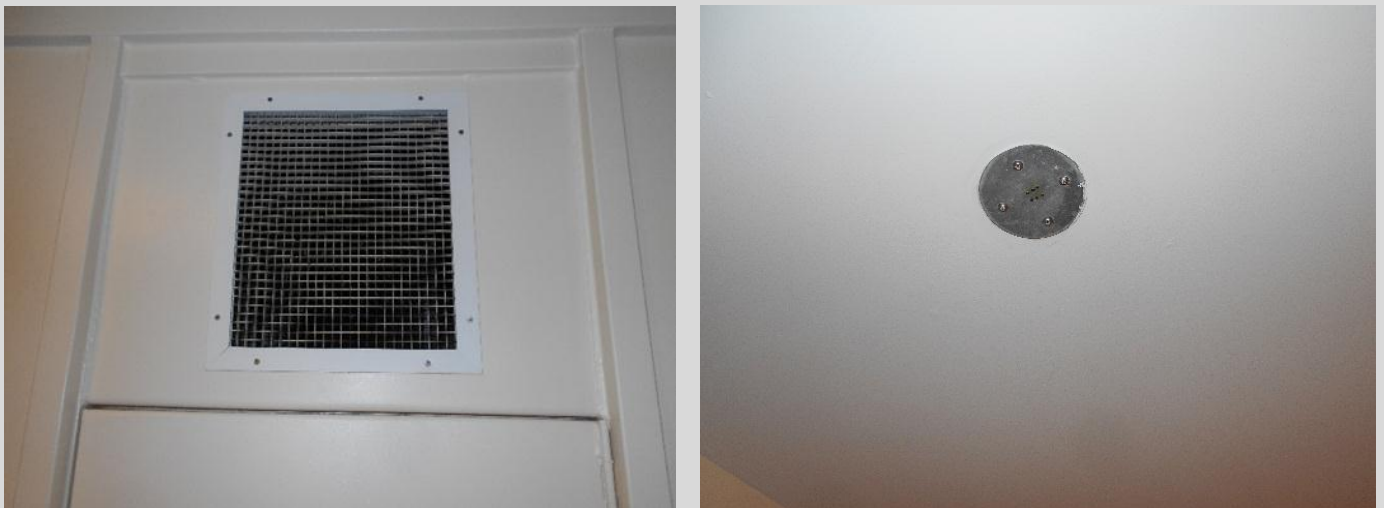
Picture 3- Smoke detection device covered by glove



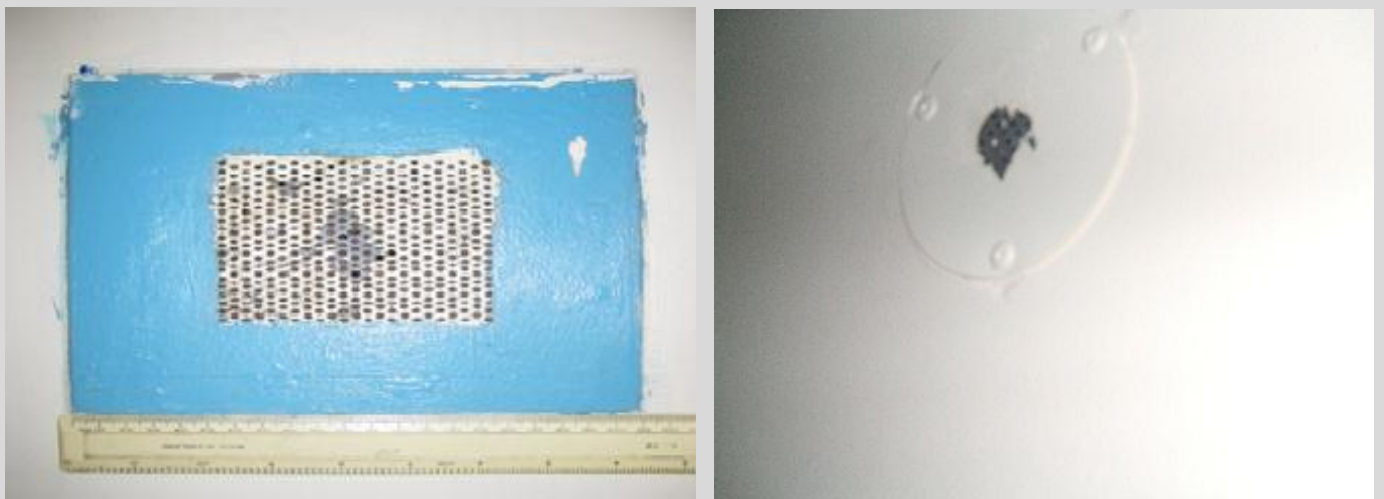
Picture set 4- Smoke detection devices missing from their mounting bases



Pictures set 5- Fire detection devices concealed by protective grilles



Picture set 6- Protective grilles- blocked/ covered-with smoke detector behind - preventing smoke to pass to the sensing chamber of the fire detector



The type of fire detection devices installed in prisons may vary in some way, but if there is any doubt about what is fitted, then the establishments Health and Safety Team should be contacted to provide information, instruction, or toolbox talks.

REFERENCES:

PSI 09/2016 Cell, Area and Vehicle Searching
PSI 11/2011 Incentives and Earned Privilege
PSI 05/2018 Prisoner Discipline Procedures
PSI 11/2015 Fire Safety in Prison Establishments
The Regulatory Reform (Fire Safety) Order 2005

Further guidance: If you require further guidance on this or any fire safety matter then contact the HMPPS Fire Safety Team. NationalFireSafetyTeam@hmps.gsi.gov.uk

HMPPS CORPORATE FIRE SAFETY TEAM:		
National Lead- Fire Safety	Mark Simpson	mark.simpson01@hmps.gsi.gov.uk