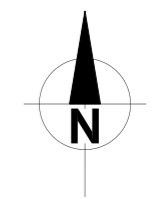
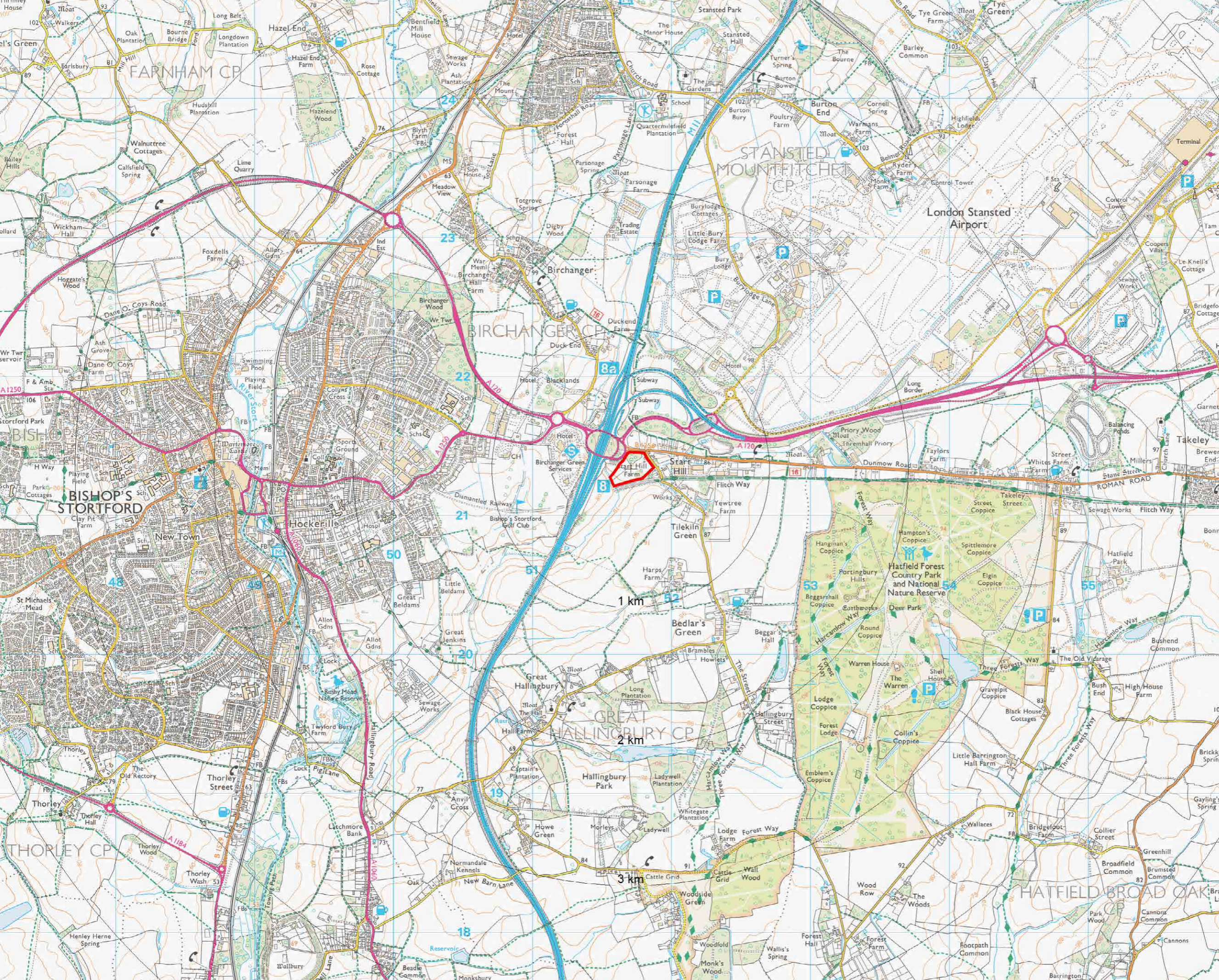


KEY:

 site location

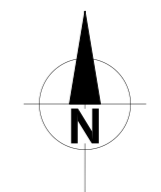


LOCATION MAP

Wren Kitchens
Bedlars Green Road
Tilekiln Green, Stansted
NC18.446-1va01c

FIGURE 1.

- proposed development area
- overall site area
- public footpaths



SITE CONTEXT AERIAL PHOTO

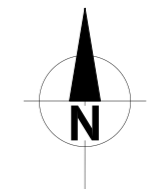
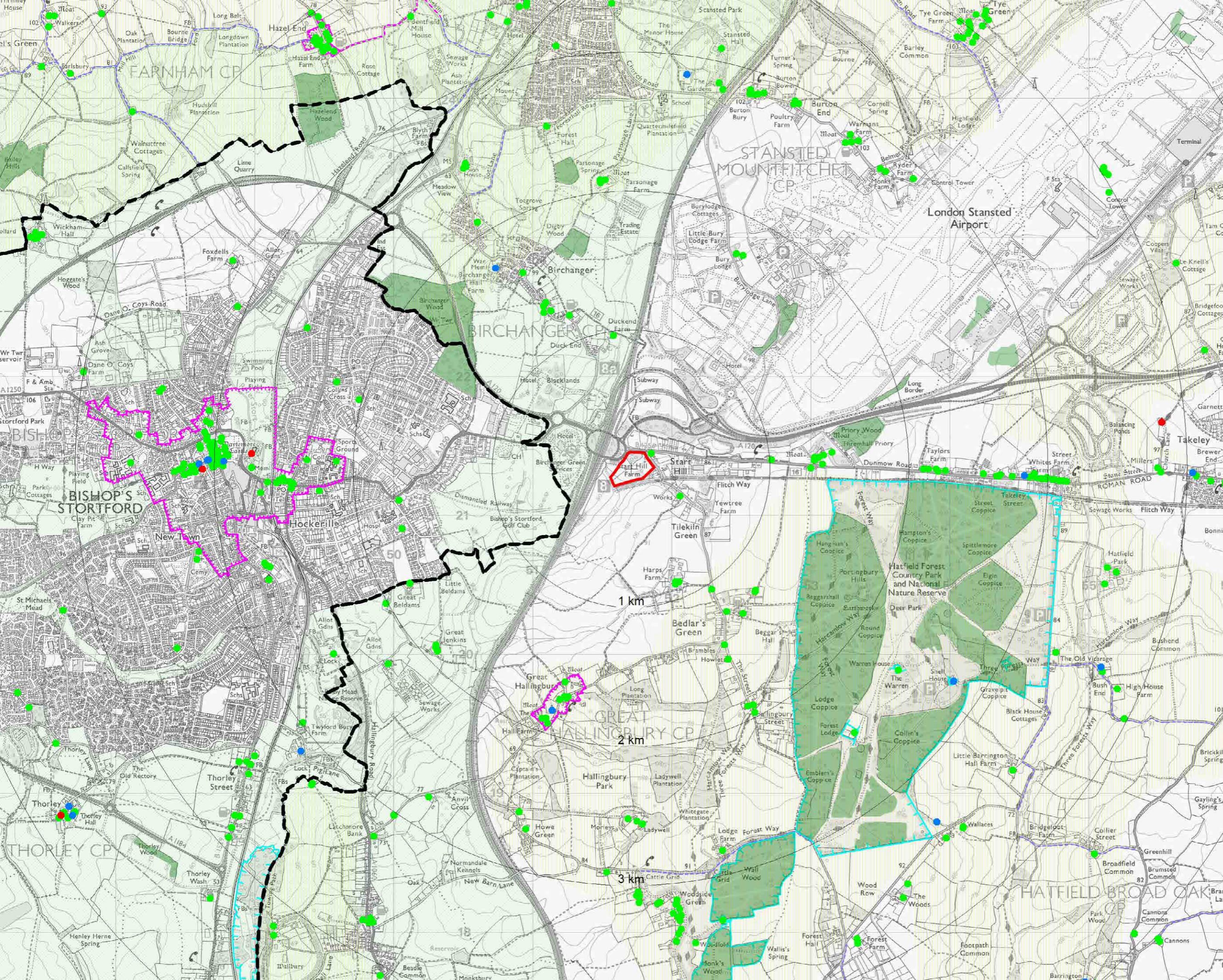
Wren Kitchens
Bedlars Green Road
Tilekiln Green, Stansted

NC18.446-lva01c

FIGURE 2.

KEY:

- site location
- Special Landscape Area (defunct policy)
- Greenbelt
- Scheduled Ancient Monument
- Conservation Area
- Grade I Listed Building
- Grade II* Listed Building
- Grade II Listed Building
- Ancient Woodland
- SSSI
- Grade I Protected Lane
- Grade II Protected Lane
- LPA Boundary

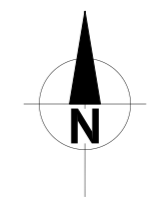
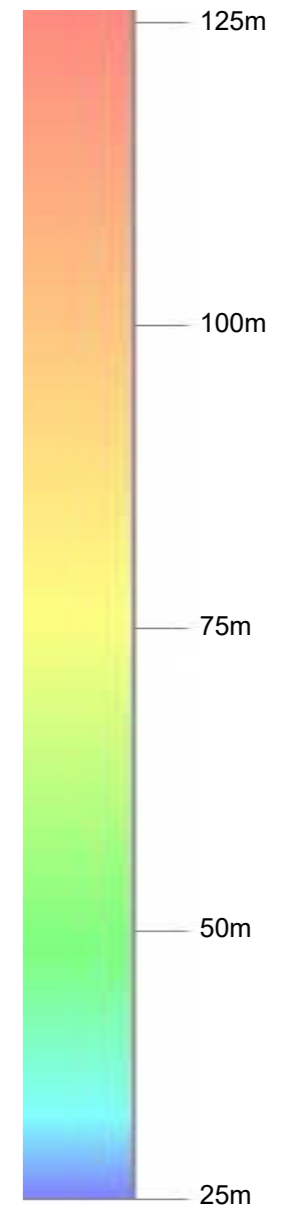


DESIGNATIONS MAP

Wren Kitchens
Bedlars Green Road
Tilekiln Green, Stansted
NC18.446-1va01c

FIGURE 3.

KEY:

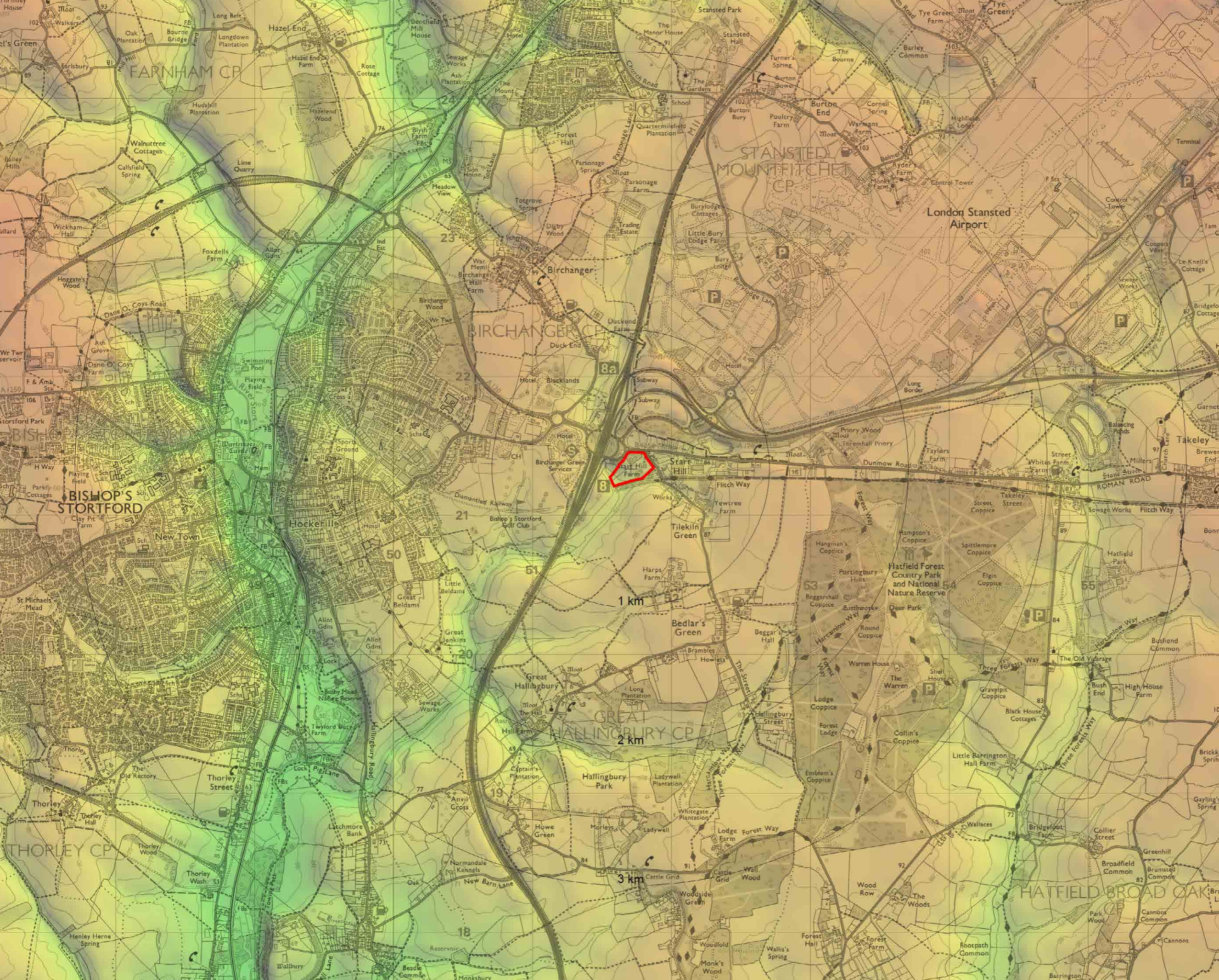


LANDFORM ELEVATION
MAP

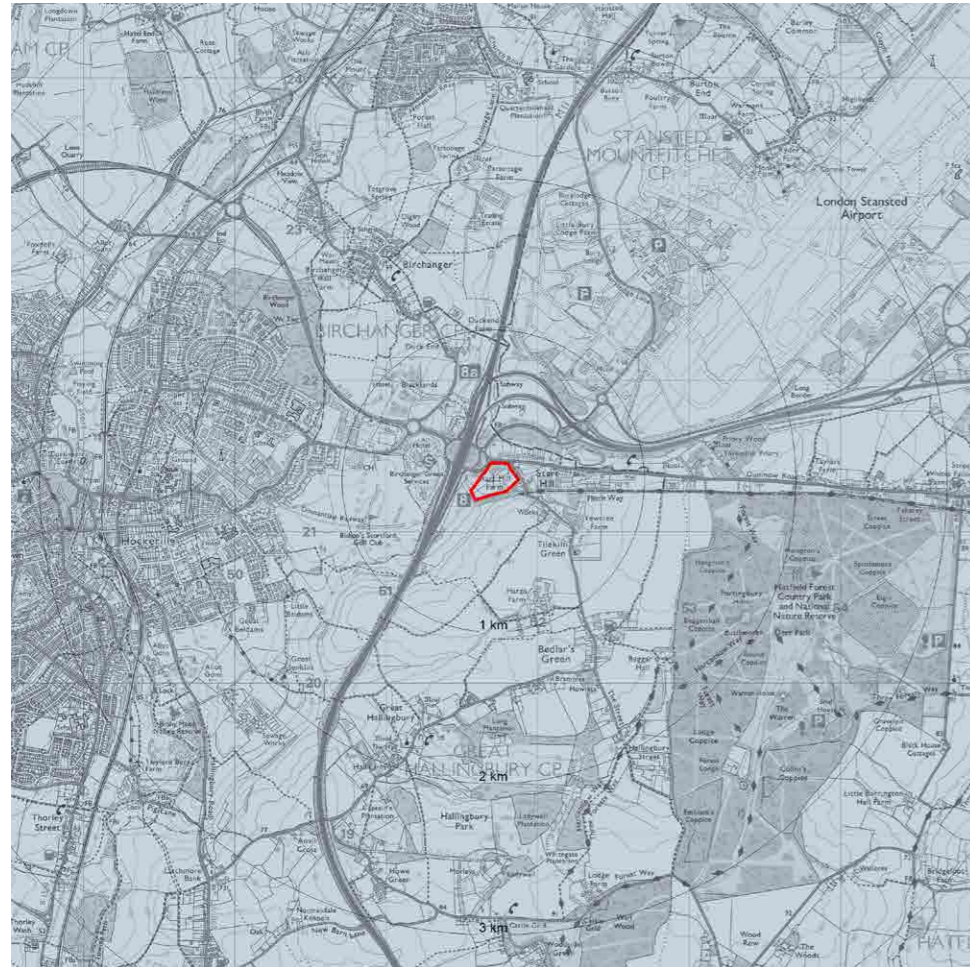
Wren Kitchens
Bedlars Green Road
Tilekiln Green, Stansted

NC18.446-1va01c

FIGURE 4.



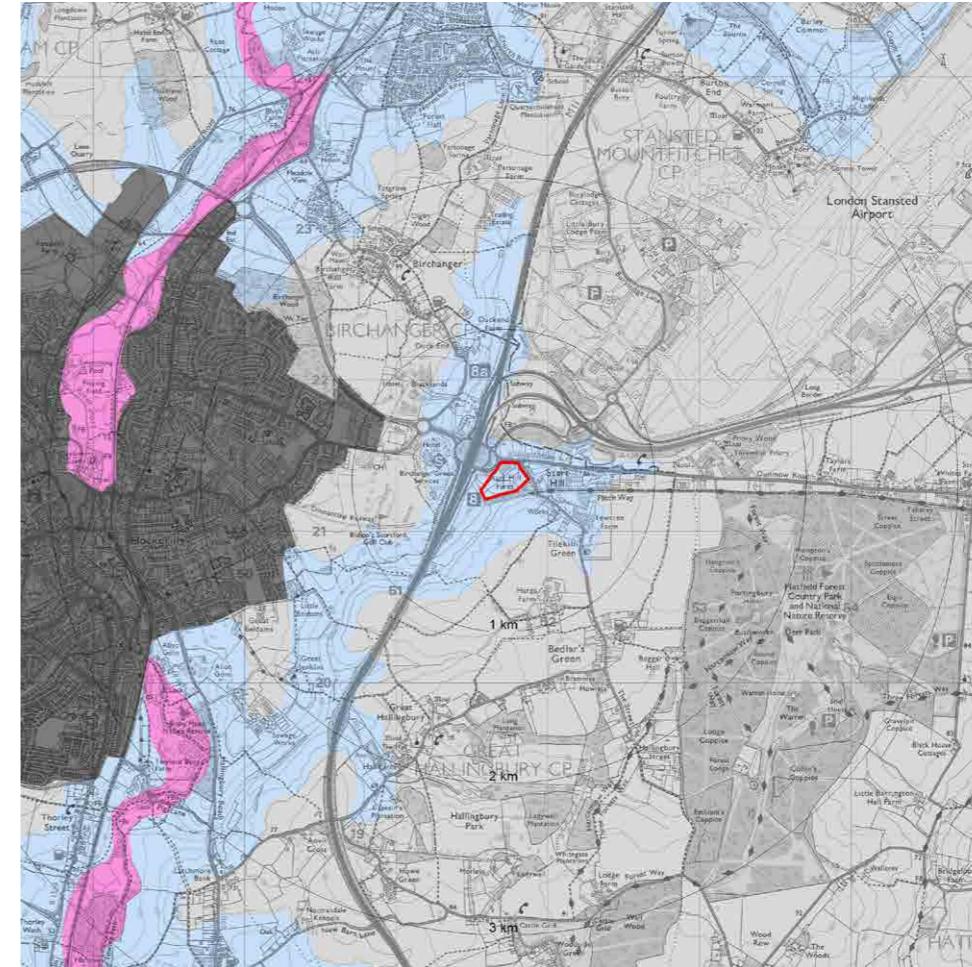
NATIONAL CHARACTER AREAS



KEY:

- 86 South Suffolk & North Essex Clayland

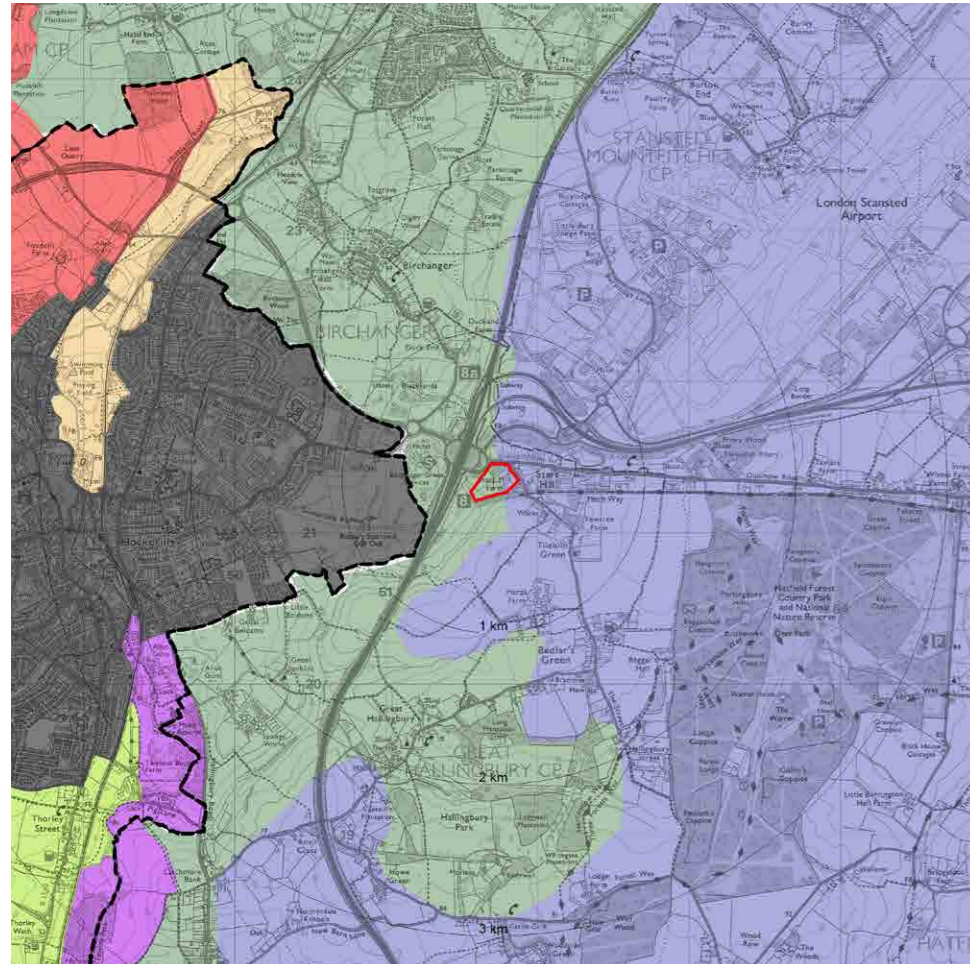
EAST OF ENGLAND LANDSCAPE FRAMEWORK



KEY:

- Valley Meadowlands
- Wooded Plateau Farmlands
- Settled Chalk Valleys
- Urban

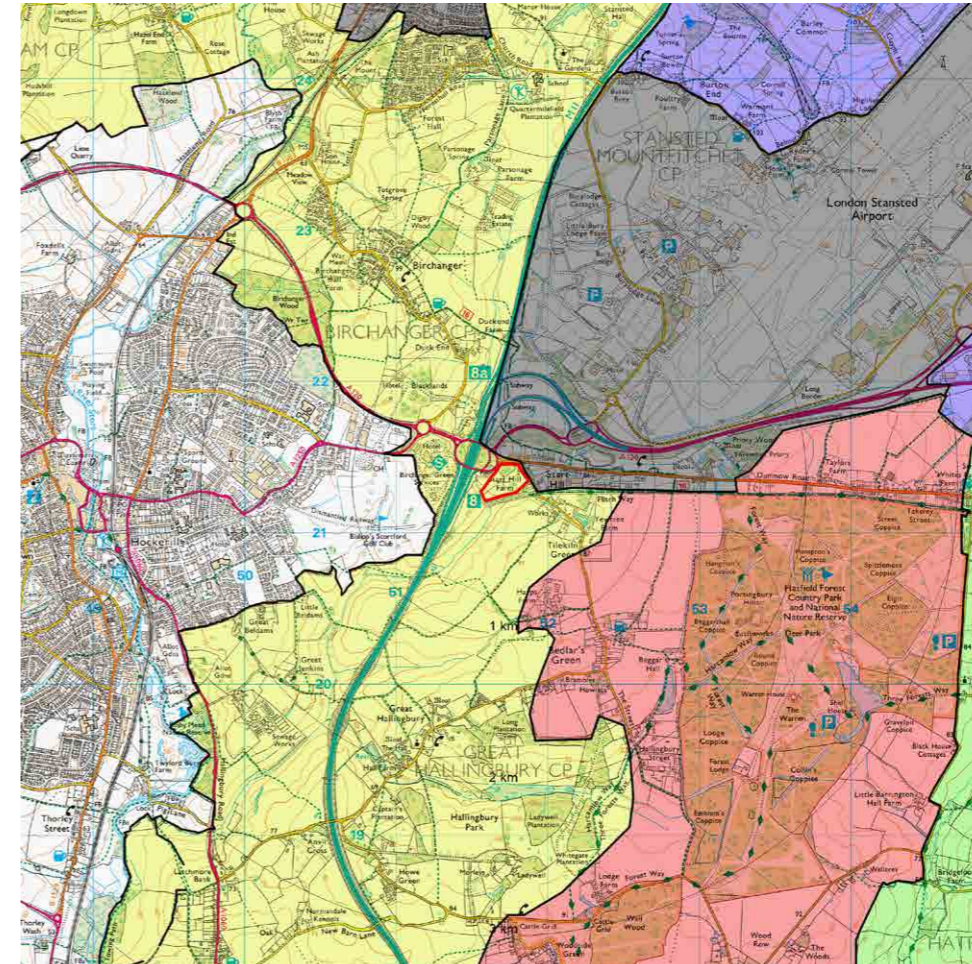
ESSEX & HERTFORDSHIRE LANDSCAPE CHARACTER



KEY:

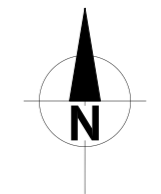
- ESSEX LCAs
- B1 Central Essex Farmland
- C2 Stort Valley
- HERTS LCAs
- Urban
- River Stort
- Thorley Uplands
- Stort Meads
- Bourne Brook Valley

UTTLESFORD LANDSCAPE CHARACTER



KEY:

- London Stansted Airport
- A3 Stort River Valley
- B12 Hatfield Forest Farmland Plateau
- B10 Broxted Farmland Plateau



LANDSCAPE CHARACTER MAPS

Wren Kitchens
Bedlars Green Road
Tilekiln Green, Stansted
NC18.446-lva01c

FIGURE 5.



KEY:

- Zone where more than 3/4 of development may be visible
- Zone where 1/2 to 3/4 of development may be visible
- Zone where 1/4 to 1/2 of development may be visible
- Zone where up to 1/4 of development may be visible

Notes:

This zone of theoretical visibility mapping indicates where the potential development may be visible from.

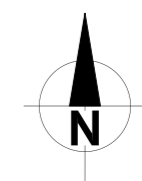
It is an approximation based on broad scale data sets and overall provides an exaggerated (worst case scenario) impression and should only be used as a broad guide to the extent of areas where views may be possible. It does not take account of any localised obstacles not included in the broad scale data sets used, such as smaller groups of trees and hedges.

Landform modelling - OS Panorama contour data derived from 1:50,000 scale mapping.

Multiple point analysis - the development area was plotted as a grid of station points for an assessment of the proportion of the development which may be visible from any given location.

Object height - each station point was set to represent the height of a loaded articulated lorry at 5m above ground level.

Viewer eye level height: 1.65m above ground level

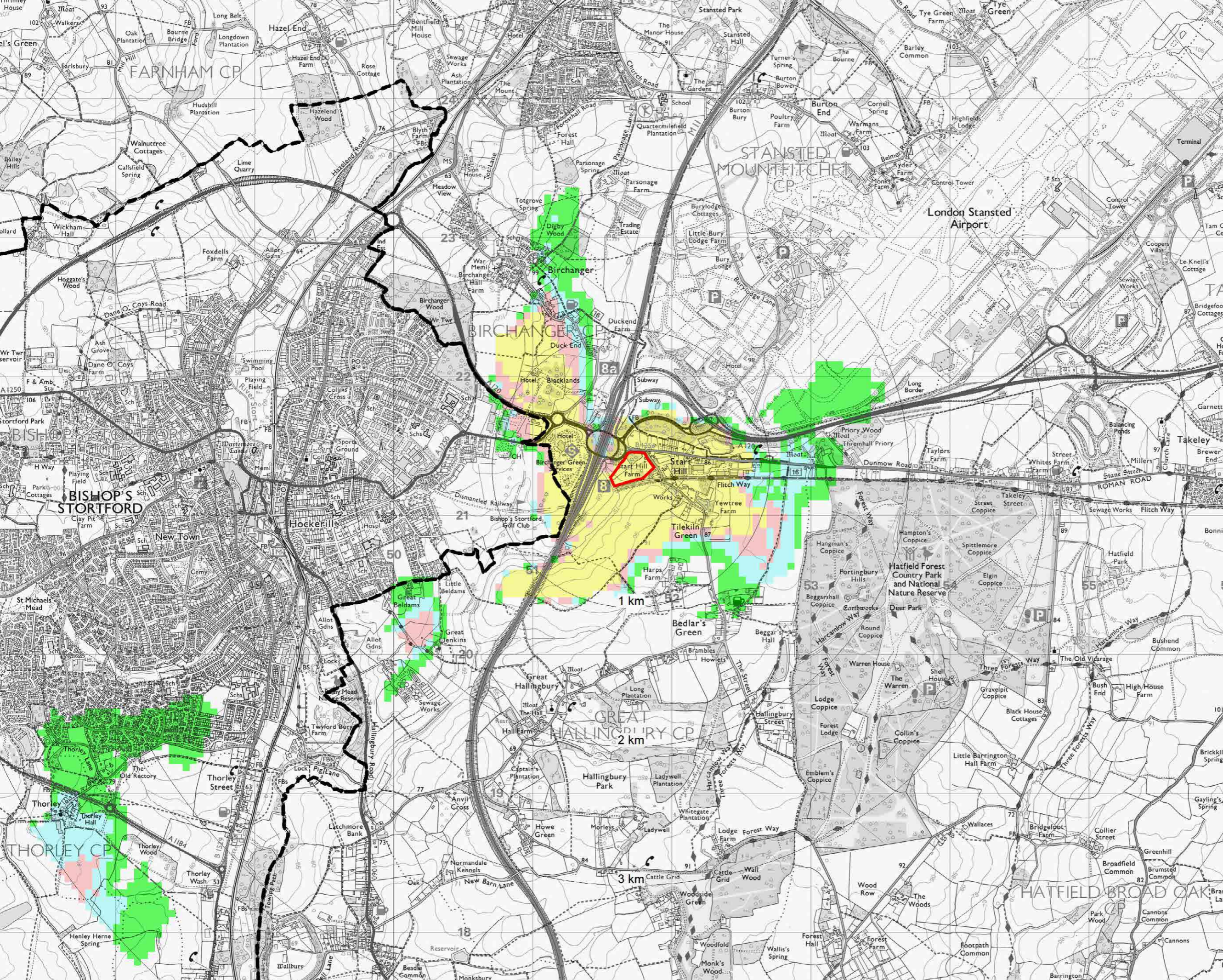



ZONE OF THEORETICAL VISIBILITY MAP

Wren Kitchens
Bedlars Green Road
Tilekiln Green, Stansted

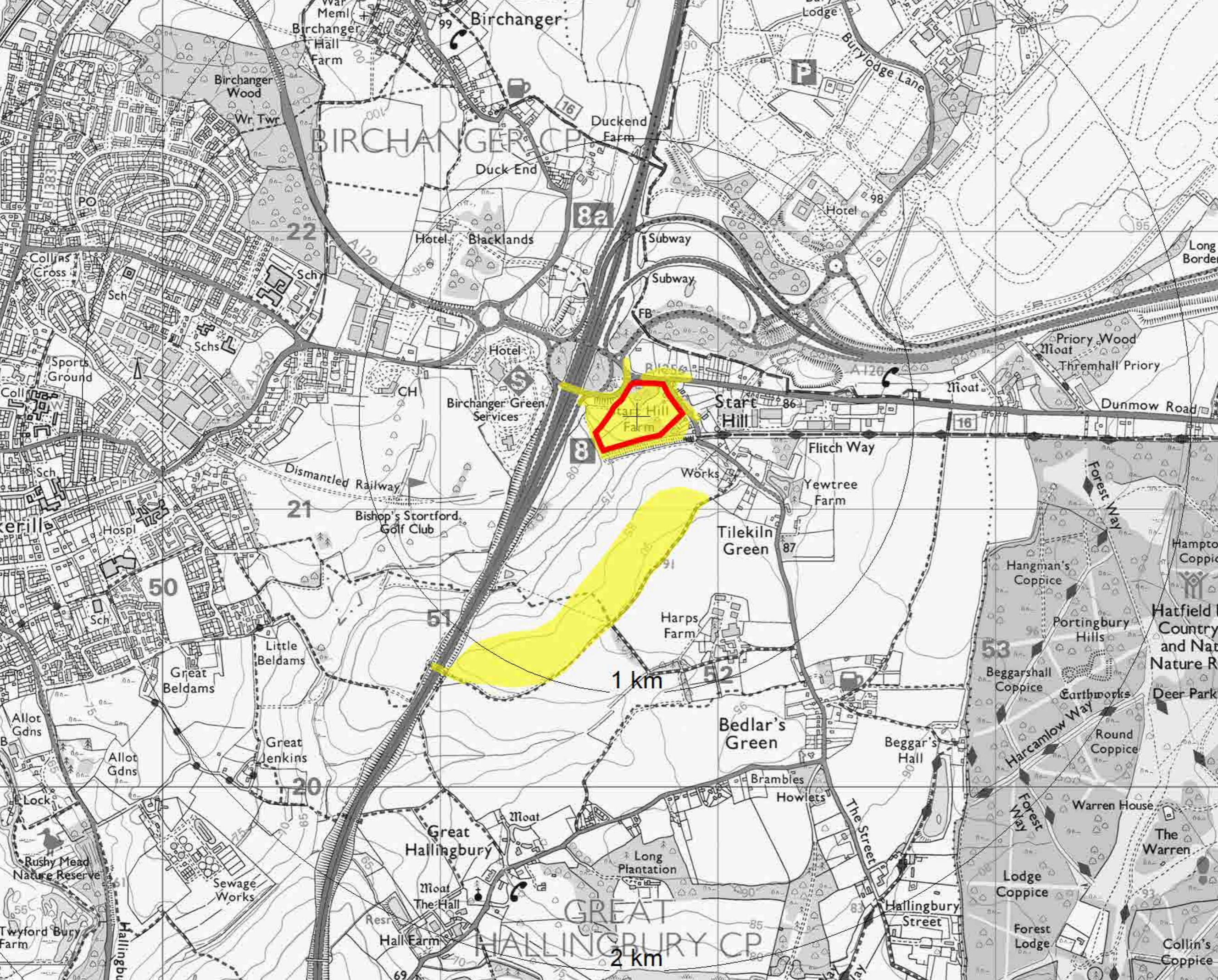
NC18.446-1va01c

FIGURE 6.



KEY:
 Zone where development would likely be visible

Notes:
 This zone of visual influence mapping is a refinement of the ZTV mapping. This has been achieved through observational field survey work. In addition to the computer modelling of potential visibility, this map takes more account of other visual barriers of a finer grain nature that are not included in the computer modelling. This includes hedgerows, tree cover, other means of enclosure, and localised variations in landform. It also makes adjustments from real observation of buildings in the landscape, woodland cover and other infrastructure. Nevertheless, this is still a best effort approximation of potential visibility.



ZONE OF VISUAL INFLUENCE MAP

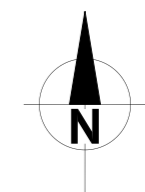
Wren Kitchens
 Bedlars Green Road
 Tilekiln Green, Stansted

NC18.446-1va01c

FIGURE 7.

KEY:

-  overall site area
-  proposed development area
-  public footpaths
-  Viewpoint photo location



VIEWPOINT PHOTO LOCATIONS MAP

Wren Kitchens
Bedlars Green Road
Tilekiln Green, Stansted
NC18.446-lva01c

FIGURE 8.