

**PLANTING SPECIFICATION**

**PRELIMS**

**Quality control**  
All landscape works to be carried out in accordance with the relevant current British Standards (including current revisions of 4428, 3936 & 5837); National Planting Specifications Guidelines; Horticultural Trades Association standards (including 'Handling and establishing landscape plants' part 1, 2 & 3); CPSE 'Plant Handling' Standards & COSH Regulations. All soft landscape works to be carried out by trained and competent operatives under appropriate supervision and only after a suitable pre-commencement site meeting of all relevant parties. Setting out, materials and plant stock supplies to be approved by a competent client representative. There will be no plant substitutions or scheme revisions allowed without written approval of the client or client representative. Workmanship and maintenance operations to be subject to monitoring inspections and approval also by a competent client representative.

**Health and Safety (CDM)**  
No site or project specific production, maintenance or in-use hazards have been identified during the design stages of this project. Should any hazards subsequently be identified they are to be brought to the attention of the client/appropriate client representative.

**SITE PREPARATION**

**Site Clearance**  
Areas for hedge planting to be cleared of all vegetation in a strip 700mm wide. Areas for copse plantation to be generally cleared of any rubbish or waste material but otherwise only 1m circles for each planting location to be cleared of ground vegetation.

**PLANTING**

**Weed control**  
Where there is a delay between ground preparations and planting, planting locations to be cleared of any recent weed growth and any other waste material.

**Plants and plant handling**

All plant material to be of good quality stock, size in accordance with the specification, and in a healthy condition; free from pest, disease and weed growth in accordance with BS3906 and HTA National Plant Specification. British native species to be of British origin, of local seed stock/provenance wherever possible, and from sustainable seed sources. Plants to be handled in accordance with BS4428 and the HTA code for Plant Handling and Establishment of Landscape Plants to ensure that transit, storage, handling on site and planting operations preserve and promote the condition of the stock. Trees and tree handling to be in accordance with BS8545:2014 Trees: from nursery to independence in the landscape - Recommendations.

**Planting generally**

Plants to be evenly spaced throughout allotted planting areas, at densities as specified. Planting mixes to be laid out with species randomly distributed throughout allotted planting areas. Planting to be carried out in accordance to the HTA code stated above, and into planting holes/pits/notches slightly larger than the growing container/root spread, with sides and bottom of pits loosened as necessary to ensure adequate drainage and to allow normal root growth. All bare-root planting to be carried out only during the winter planting season between mid-November and the end of February. No planting to be undertaken when the ground is frozen.

**Copse plantation set out**

Woodland tree species to be set out on a 2.5m x 2.5m staggered grid.

**Hedge set out**

Hedges to be planted in a double staggered row at 450mm centres with rows off-set by 300mm.

**Mulch**

Within copses, mulch 1m circles around each planting location; hedges to be mulched in a 1m wide strip. Contractor to agree mulching method and material to be used with client representative.

**Protection**

All tree canopy plants to be protected with 900mm high deer guards. All woodland shrub layer species to be protected with 600mm high rabbit guards. These to be 170-200mm diameter for shrub species and 80-110mm diameter for trees. All to be installed and secured in accordance with manufacturer's instructions immediately after planting.

**INITIAL MAINTENANCE / RECTIFICATION PERIOD**

**Replacement planting within woodland areas**

Contractor to be responsible for replacement of any failed, falling or missing plants in winter planting season one year after planting where losses are over 30% of total planting. Otherwise, canopy to be allowed to develop through natural regeneration.

**Weeding**

Weed removal, to 1m circle around each woodland plant and 1m strip along width of hedges, to be carried out twice during each growing season.

**Mulch**

Mulch to be reinstated to original specification 1 year following original planting.

**LONG-TERM MAINTENANCE**

**Establishment maintenance - copse planting**

It is recommended that the landowner makes provision for ongoing annual maintenance, repeating the first year's maintenance operations for at least two further years. After this period, if establishment is progressing well, the woodland planting can be monitored, and maintenance operations carried out as and when found necessary.

**Establishment maintenance - hedges**

Hedges to be cut back annually in June and September to encourage bushy growth down to ground level. Trim to tapered A-shape. Height to achieve minimum 2.5m to provide screen to acoustic fence.

**Removal of waste materials**

Rabbit and deer protection guards to be removed at the end of Year 5.

**Future management**

It is also advised that every three years, an appropriately qualified tree/forestry expert should inspect the woodland areas and produce a condition and management report.

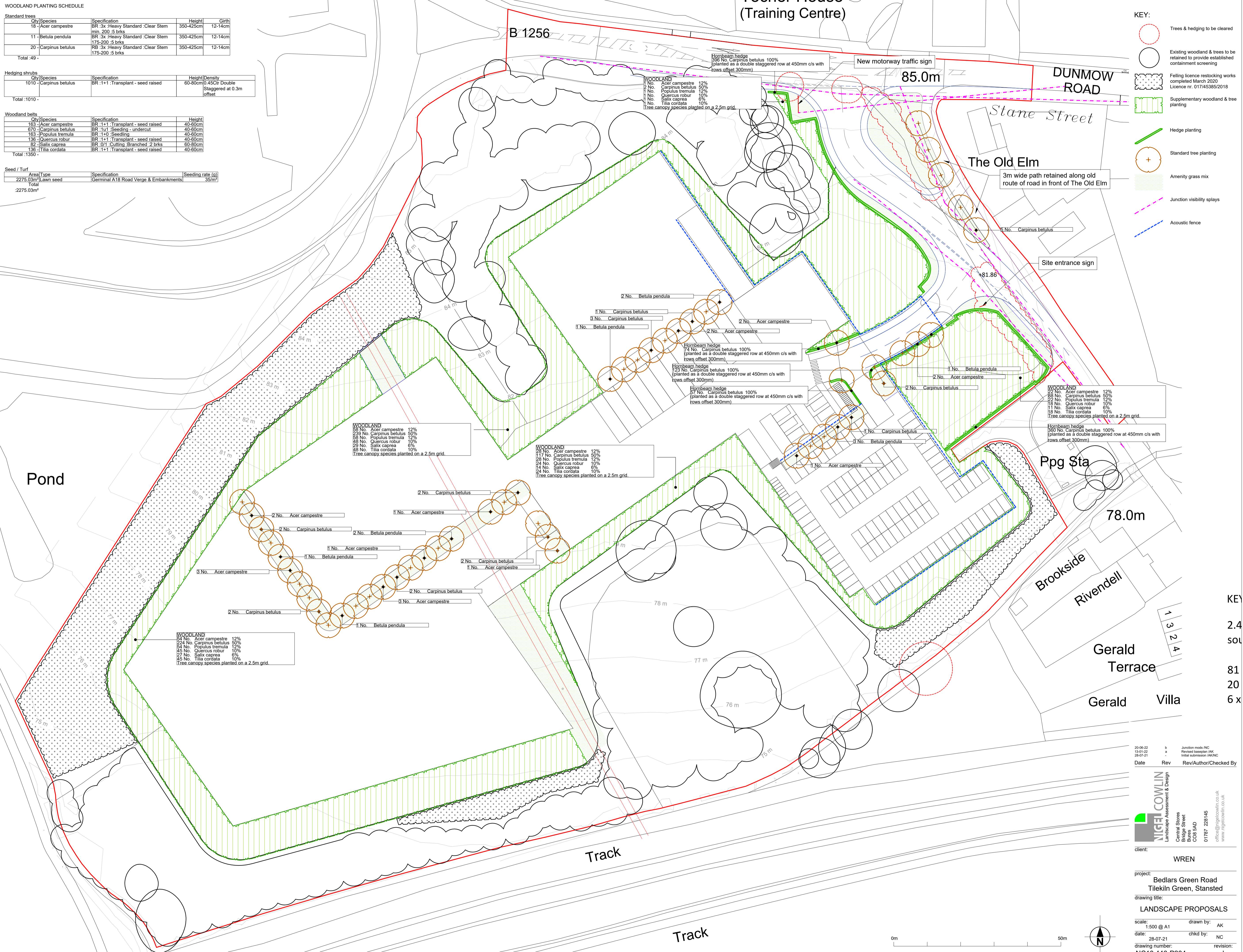
**WOODLAND PLANTING SCHEDULE**

Qty	Species	Specification	Height	Girth
18	Acer campestre	BR 3x Heavy Standard - Clear Stem	350-425cm	12-14cm
11	Betula pendula	BR 3x Heavy Standard - Clear Stem	350-425cm	12-14cm
20	Carpinus betulus	RB 3x Heavy Standard - Clear Stem	350-425cm	12-14cm
Total :49 -				

Qty	Species	Specification	Height	Density
1010	Carpinus betulus	BR 1+1 Transplant - seed raised	60-80cm	0.450r Double Staggered at 0.3m offset
Total :1010 -				

Qty	Species	Specification	Height
163	Acer campestre	BR 1+1 Transplant - seed raised	40-60cm
670	Carpinus betulus	BR 1+1 Seeding - undercut	40-60cm
163	Populus tremula	BR 1+0 Seeding	40-60cm
136	Quercus robur	BR 1+1 Transplant - seed raised	40-60cm
82	Salix caprea	BR 10T Cutting Branched 2 brks	60-80cm
136	Tilia cordata	BR 1+1 Transplant - seed raised	40-60cm
Total :1350 -			

Seed / Turf	Area Type	Specification	Seeding rate (g)
2275.03m <sup>2</sup>	Lawn seed	Germinall A18 Road Verge & Embankments	35m <sup>2</sup>
Total :2275.03m <sup>2</sup>			



**KEY:**

- Red dashed circle: Trees & hedging to be cleared
- Black circle: Existing woodland & trees to be retained to provide established containment screening
- Stippled area: Felling licence restocking works completed March 2020 Licence nr. 017/45385/2018
- Green hatched area: Supplementary woodland & tree planting
- Green line: Hedge planting
- Orange circle with cross: Standard tree planting
- Green stippled area: Amenity grass mix
- Purple dashed line: Junction visibility splays
- Blue dashed line: Acoustic fence

**KEY**

2.4

**SOU**

81

20

6 x

20-06-22	13-01-22	28-07-21	Junction roads INC	Revised baseline/AX	Initial submission/AX/NC
Date	Rev	Rev/Author/Checked By			

**NIGEL COWLIN**  
Landscape Assessment & Design  
Central Stores  
Bridge Street  
CO8 5AD  
01787 226145  
office@nigelcowlin.co.uk  
www.nigelcowlin.co.uk

client: **WREN**

project: **Bedlars Green Road  
Tleiklin Green, Stansted**

drawing title: **LANDSCAPE PROPOSALS**

scale: 1:500 @ A1 drawn by: AK

date: 28-07-21 chkd by: NC

drawing number: **NC18.446-P204** revision: **b**

