

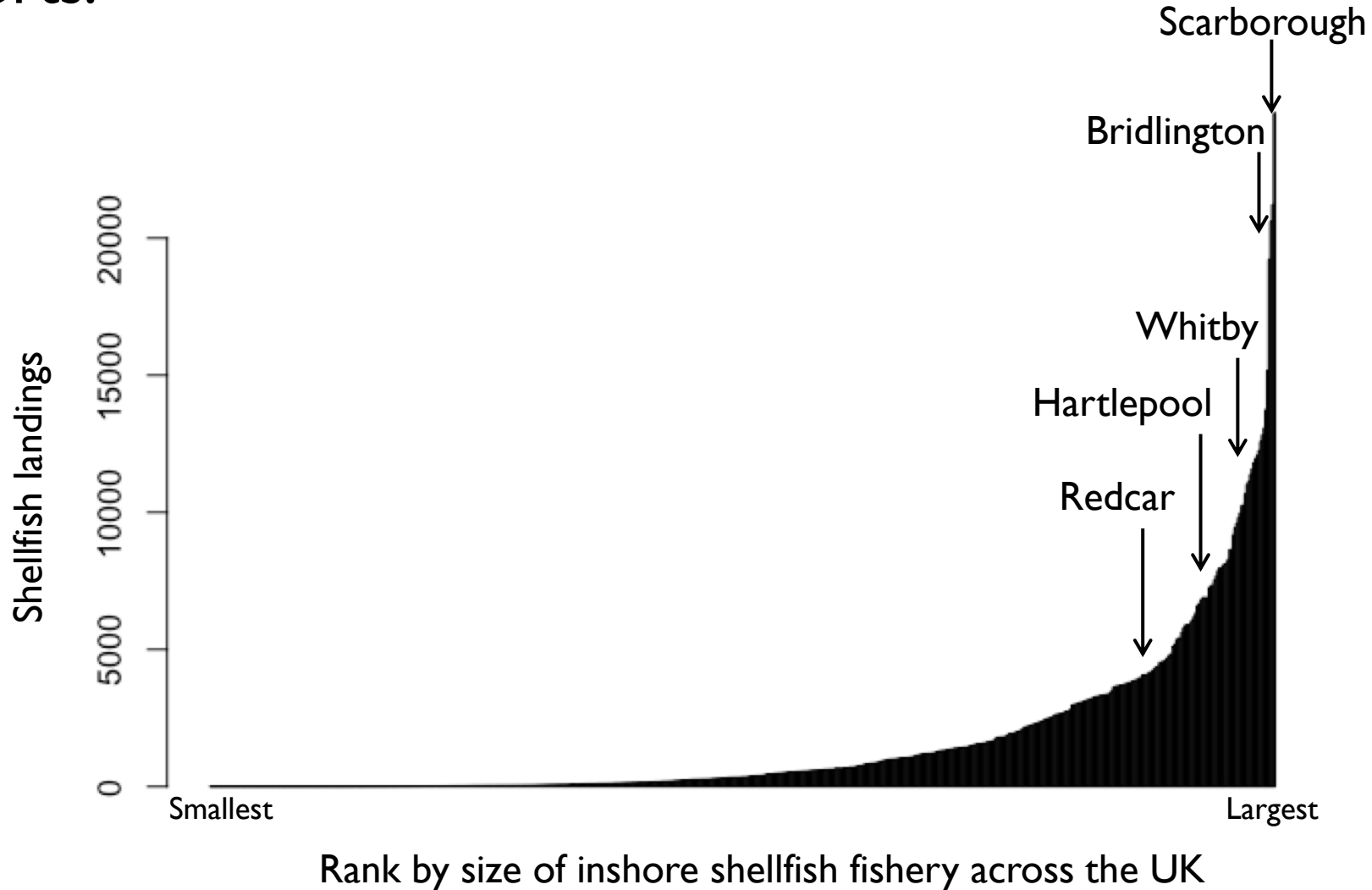
Which region are we looking at?



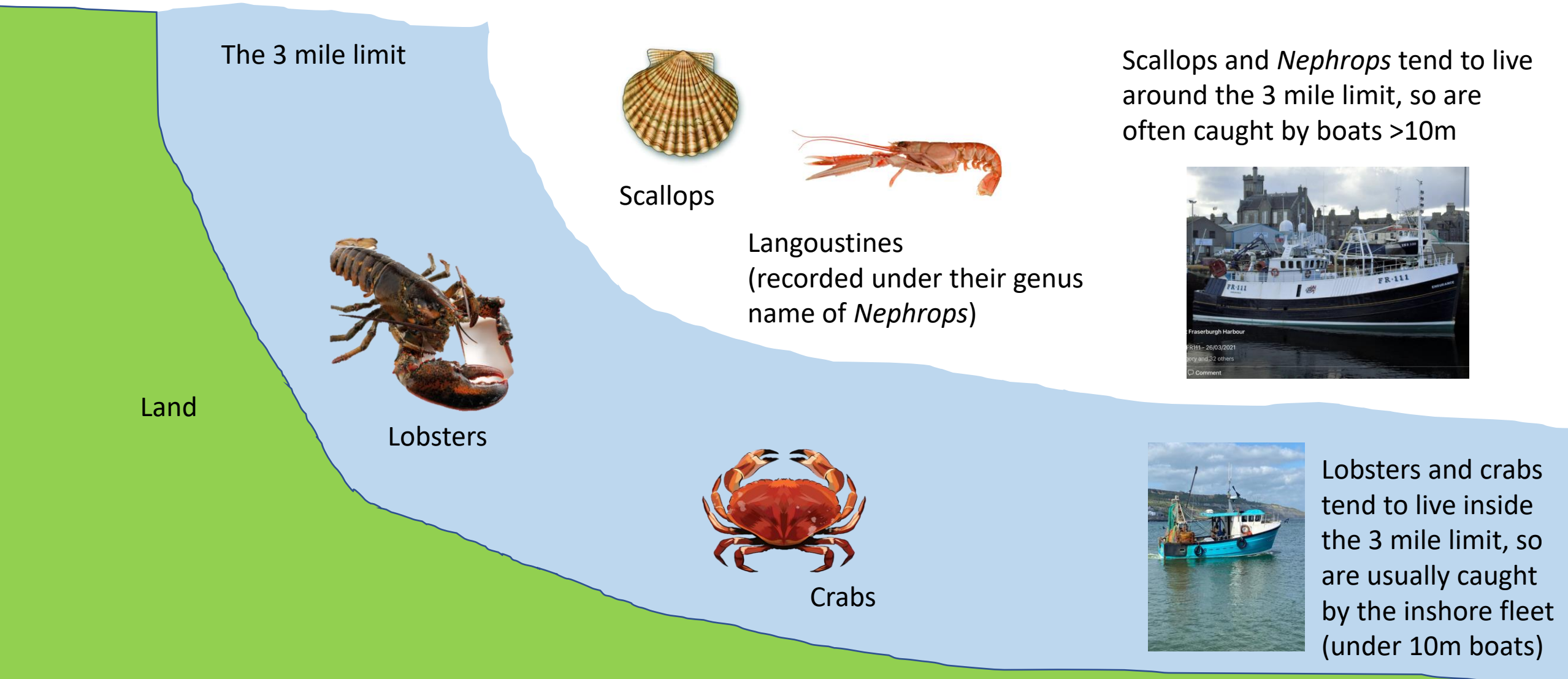
This bit

Why are these particular north east ports important?

Apart from anything else, they're some of the UK's largest inshore shellfish ports.



What shellfish are caught there and what catches them?

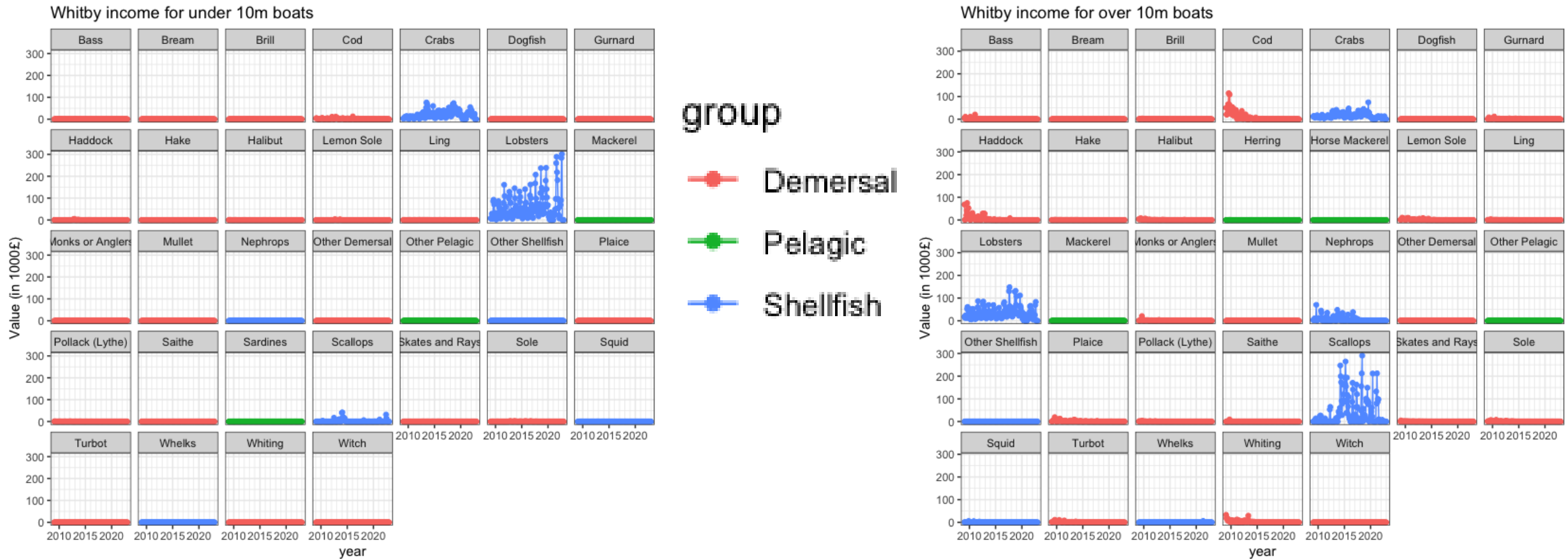


Scallops and *Nephrops* tend to live around the 3 mile limit, so are often caught by boats >10m



Lobsters and crabs tend to live inside the 3 mile limit, so are usually caught by the inshore fleet (under 10m boats)

Ports in the northeast are almost entirely dependent on shellfish catches (the data in blue)



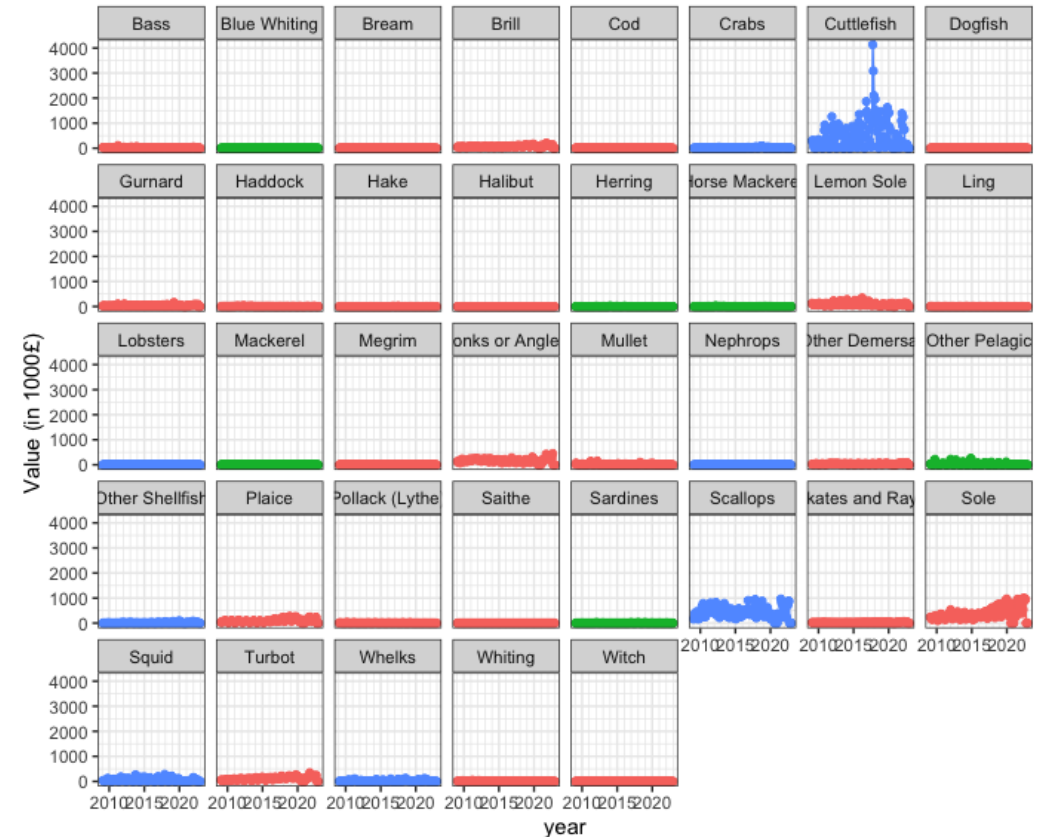
(due to overfishing in the North Sea back in the 20th century)

By contrast, ports elsewhere in the UK often have more diverse landings, here's Brixham (SW) for comparison

Brixham income for under 10m boats

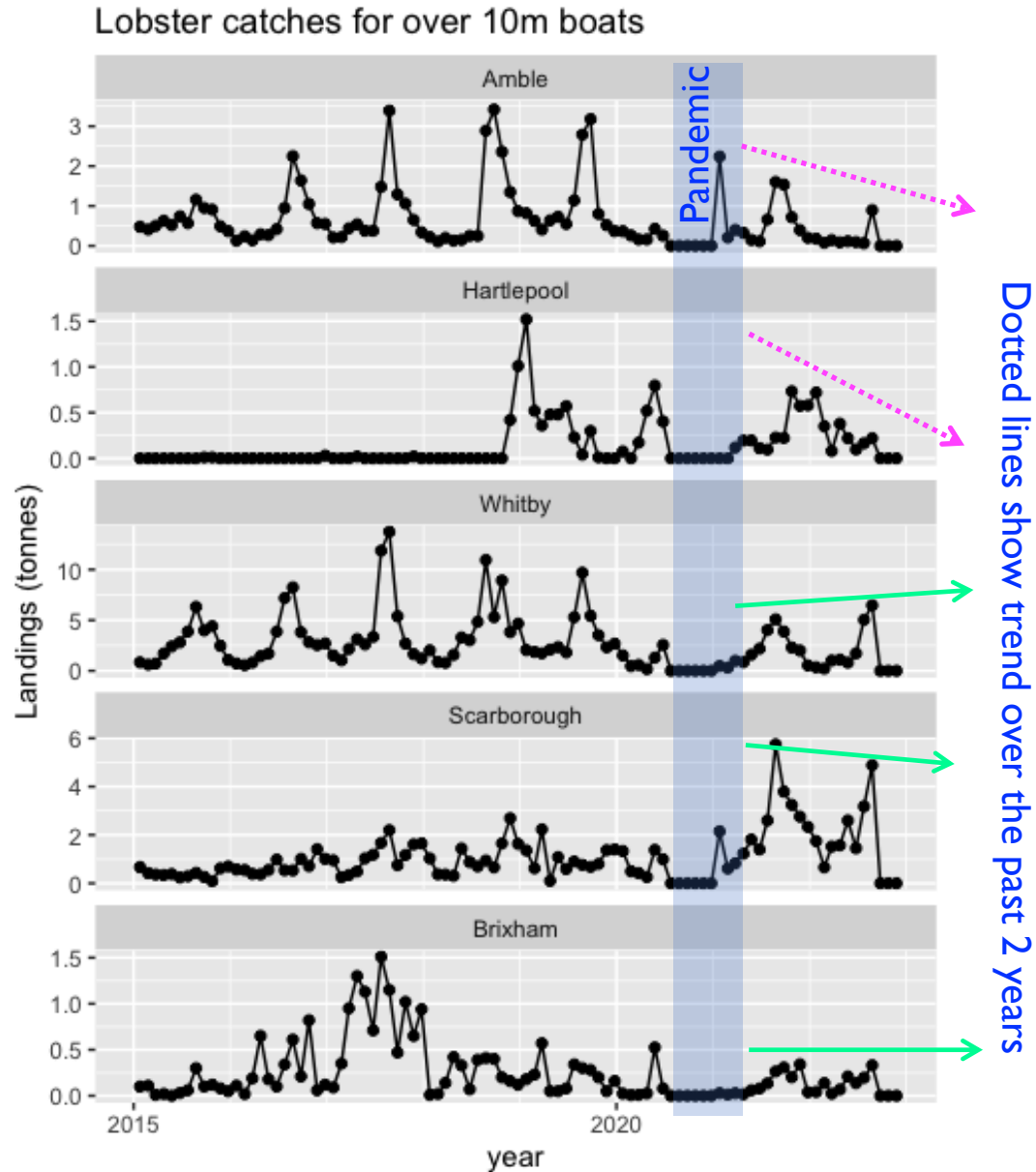


Brixham income for over 10m boats



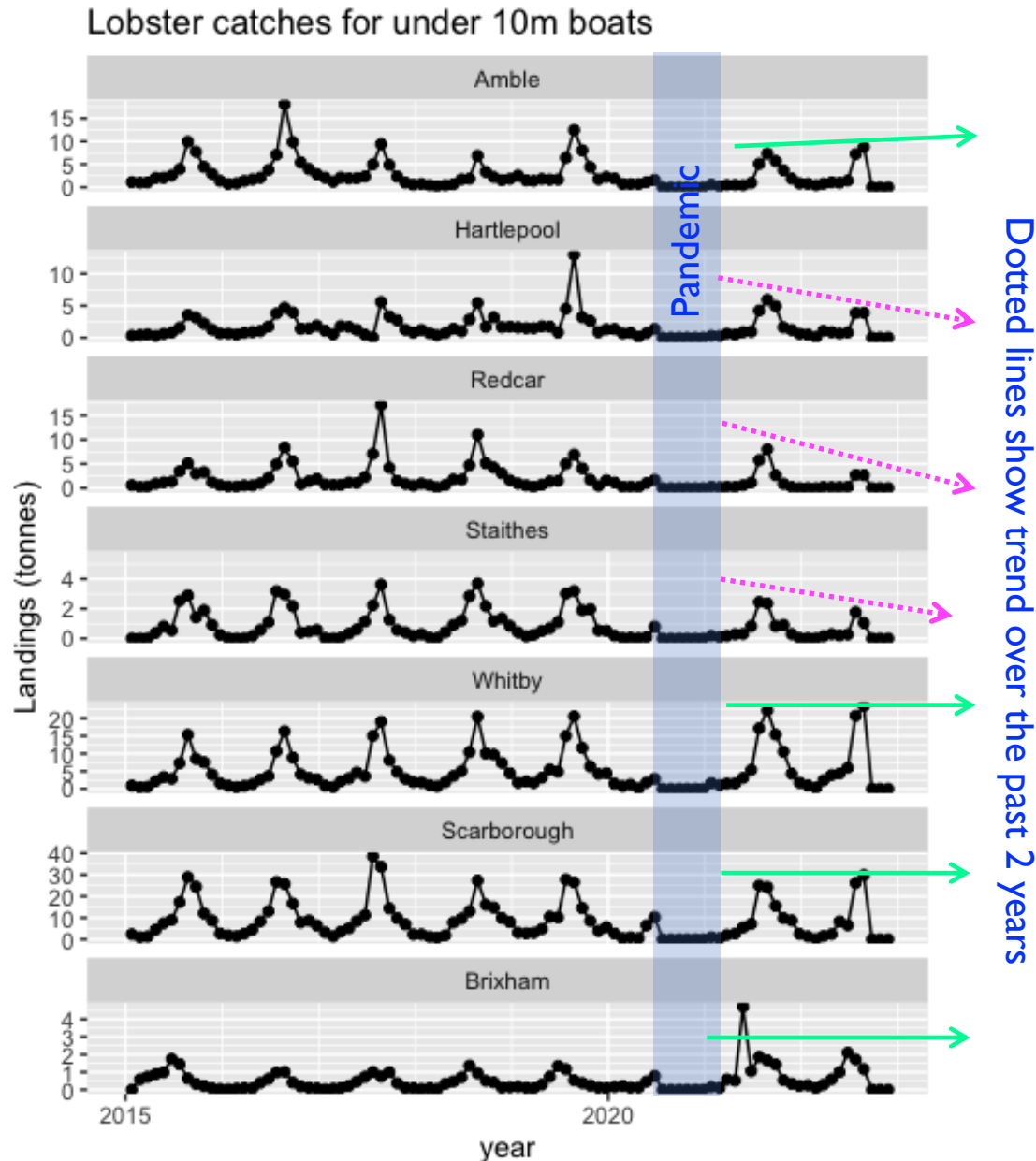
- Brixham has a much more diverse portfolio of landings: demersal and shellfish.
- Brixham depends more on offshore landings (see y axis scale). The northeast ports depend about equally on inshore and offshore landings.

How have offshore landings fared over the past few years?



- To keep the graphs simple, we'll focus on lobsters because they provide the bulk of income (other catches show similar patterns at each port).
- Redcar and Staithes don't operate boats >10m, so no data for them.
- Offshore landings for Amble are a bit low for 2022 but fit with the overall envelope.
- Hartlepool: again, a bit low but hard to see much difference with Amble.
- Whitby, Scarborough and Brixham look much less bothered.
- Let's have a look at the inshore catches...

How about the **inshore** landings for Teesside?



- All three Teesside ports show decreases outside the pre-pandemic envelope.
- The epicentre of decline seems to be somewhere between Redcar and Staithes, which see the largest decreases (cf. plume model).
- In contrast, the ports to the north (Amble) and south (Whitby, Scarborough, Brixham) of Teesside aren't doing too badly: landings are approximately steady over the past 2 years and on a par with pre-pandemic landings.