



**CHARITY COMMISSION**  
FOR ENGLAND AND WALES

---

**Dr Helen Stephenson CBE**  
**Chief Executive**

**Annual Public Meeting**  
**12 October 2022**  
**Cardiff and online**



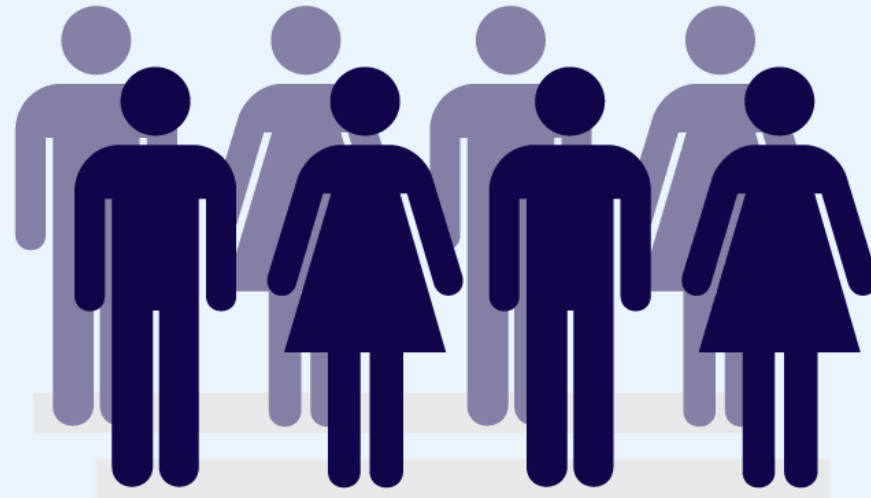
**CHARITY COMMISSION**  
FOR ENGLAND AND WALES

**Peter Erle QC, first Chief Charity Commissioner  
Appointed 1853**





## Total trustees

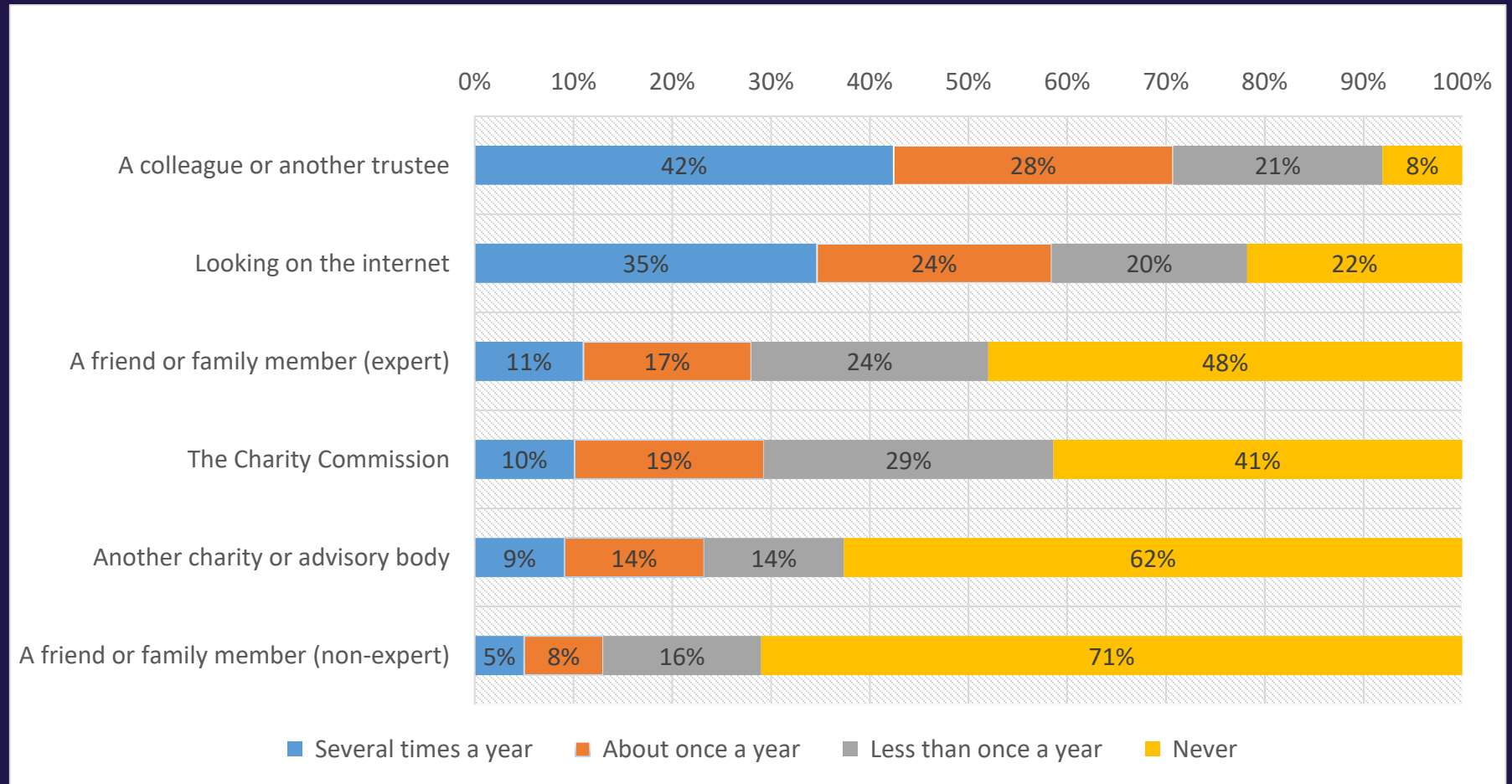


928,688

Trustee positions

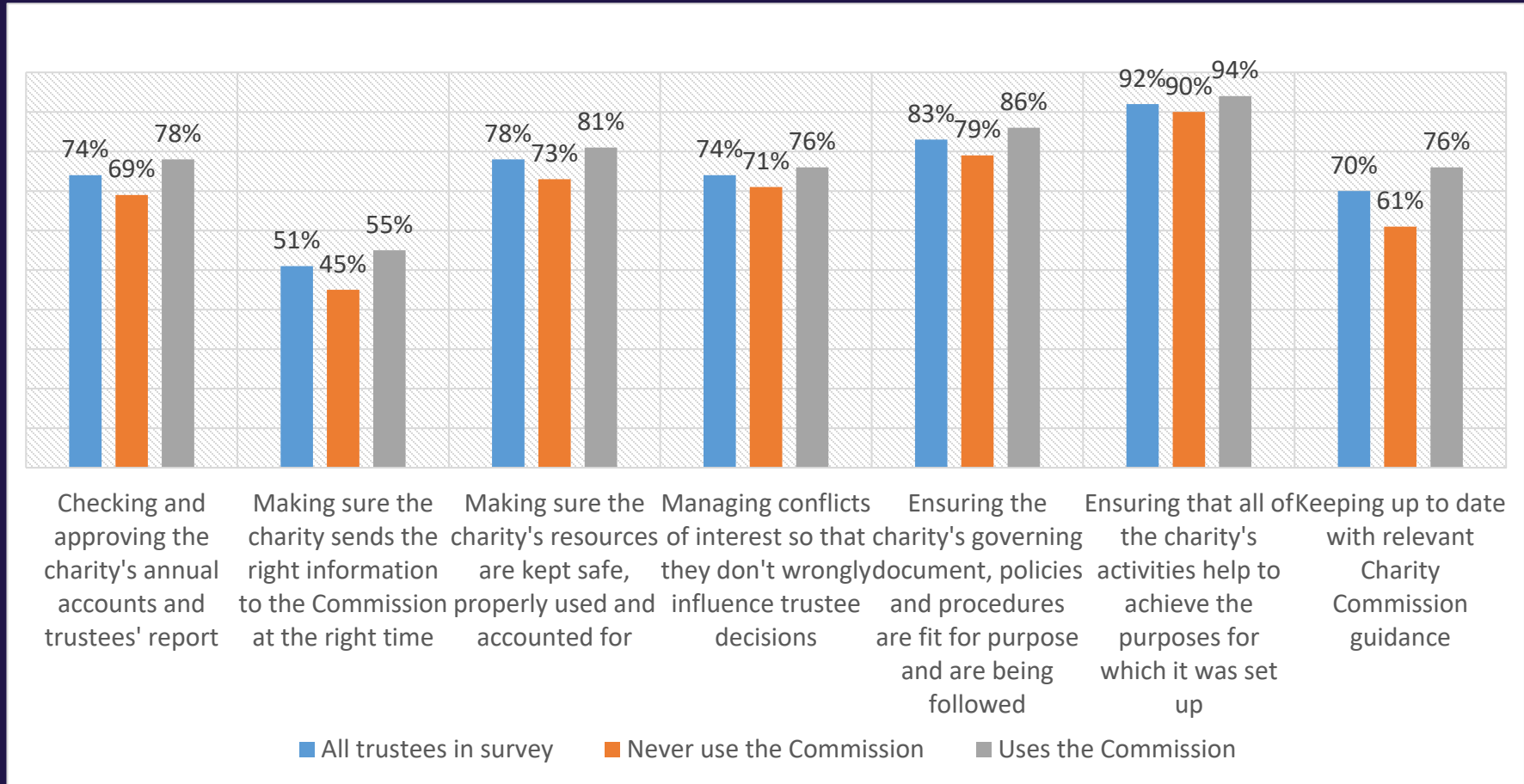


Trustees are  
twice as reliant  
on colleagues or  
other trustees  
and the internet  
as they are on  
CCEW for  
guidance





# Trustees using our guidance are more likely to correctly understand their duties





CHARITY COMMISSION  
FOR ENGLAND AND WALES

---

We need to talk





**CHARITY COMMISSION**  
FOR ENGLAND AND WALES

---



## **My Charity Commission Account**



CHARITY COMMISSION FOR ENGLAND AND WALES **My Charity Commission account** English Cymraeg

Home Messages **10** Account Sign out

Home

## Thomas Wright

### My charities

Charity name	Number	Year end	Reporting status	Permissions level	Action
THE SHOWERING FUND	200017	31 March	Up to date	Full access	<a href="#">Go to charity</a>
LIVING HEALTH AND EDUCATION FOUNDATION	1138227	30 September	14 days late	Trustee access	<a href="#">Go to charity</a>
GODSTONE RELIEF IN NEED CHARITY	200055	31 March	Due in 37 days	Third-party access	<a href="#">Go to charity</a>

If your charity is not listed here, you could [add a missing charity](#).

▶ [What do the permissions levels mean?](#)

CHARITY COMMISSION FOR ENGLAND AND WALES **My Charity Commission account** English Cymraeg

Home Messages **10** Account Sign out

Home > LIVING HEALTH AND EDUCATION FOUNDATION

### LIVING HEALTH AND EDUCATION FOUNDATION

Charity number: 1138227

**x** Charity reporting is overdue by 14 days

**!** Charity reporting is overdue by 14 days

You are the **trustee** at this charity and can use all online services except manage users (unless provided as an additional permission)

### Services

**Annual return**

Submit your charity's annual return, including annual accounts and trustees' annual report.

Last updated: 12 April 2022

**Charity details**

Check and update your charity's details, including information published on the public register of charities.

Last updated: 12 April 2022

**Charity name**

Change your charity's name or working name.

Last updated: 12 April 2022

**Governing document**

You can change your charity's governing document if it's in your charity's best interest to do so.

Last updated: 12 April 2022

**Financial period**

Use this service to change your charity's financial year end.

Last updated: 12 April 2022

**Registration certificate**

You can use this to prove your charity's status, for example when opening a bank account or applying for a grant.





[Home](#) [Messages <sup>10</sup>](#) [Account](#) [Sign out](#)

[Messages](#)

## Messages

<a href="#">New account request from Peter Maynard</a>	<b>1 July 2022</b>
<a href="#">Access request from Henry Knight</a>	<b>8 June 2022</b>
<a href="#">Add new trustee request from Rose Atkins</a>	2 June 2022
<a href="#">Access request from Micala Wilkinson</a>	<b>30 May 2022</b>
<a href="#">Access request from Nicola Chamberlain</a>	<b>17 April 2022</b>
<a href="#">Merge trustee details request from Abhijeet Patel</a>	<b>4 April 2022</b>
<a href="#">New trustee added: Eileen Daniels</a>	1 April 2022
<a href="#">New account request from Mei Kwan Leung</a>	<b>12 March 2022</b>
<a href="#">Tips on getting started as an administrator with your Charity Commission account</a>	<b>28 December 2021</b>



# Ensure the right people have access

CHARITY COMMISSION FOR ENGLAND AND WALES
My Charity Commission account
English [Cymraeg](#)

---

Home
Messages 10 Account Sign out

---

Home > [THE SHOWERING FUND](#) > Manage users

## Manage users

View and add users and change their access to online services for your charity.

Search users

Q

### User list

[▶ What do the permissions levels mean?](#)

Name	Role(s)	Permissions level	Account status	Action
Thomas Wright <span style="background-color: #002060; color: white; padding: 2px 5px; font-weight: bold;">ADMINISTRATOR</span>	Charity contact	Full access	ACTIVE	<a href="#">Details</a>
Jennifer Richardson	Trustee	Trustee access	INVITED	<a href="#">Details</a>
Worthing District Council	Trustee	Trustee access	ACTIVE	<a href="#">Details</a>
Nicola Chamberlain <span style="background-color: #002060; color: white; padding: 2px 5px; font-weight: bold;">ADMINISTRATOR</span>	Trustee	Trustee access	ACTIVE	<a href="#">Details</a>

### Account request detail

The following person has requested for a Charity Commission account so they can access online services on behalf of your charity. You can accept or decline their request.

#### User details

<b>Name</b>	Peter Maynard
<b>Email address</b>	peter_maynard@nothotmail.com
<b>Permissions level</b>	Third-party access

#### Access requested

The user has asked for these permissions:

Service	Current permission	Requested permission
<b>Charity accounts</b>	None	Edit

As this is a **new third-party user**, they will have no access to online services by default and will only receive access that is shown above.

They've also provided comments to support their request:

**Further information** Hi, I'm requesting access to The Showering Fund so I can help them with their financial accounts. I need an account so I can submit them online.

### Approve this request?

Select yes to approve this request and send a link for the user to register their account.

Yes

No

Save and continue
[Cancel](#)



**CHARITY COMMISSION**  
FOR ENGLAND AND WALES

## **Charity contacts: sign up to *My Commission Account***





**CHARITY COMMISSION**  
FOR ENGLAND AND WALES

**Is the right person registered as  
your charity's contact?**





- Becoming a data-driven regulator
- Helping the public make informed choices
- A richer understanding of the sector





## Thank you for taking part

- 460 responses received
- Analysis now underway
- Overall sentiment positive
- Much for us to reflect on





## Total charity income we regulate

**£83.8bn**  
Charity income

**£80.1bn**  
Charity spend





## Commission income







## Contact centre



**74,878**  
Calls answered

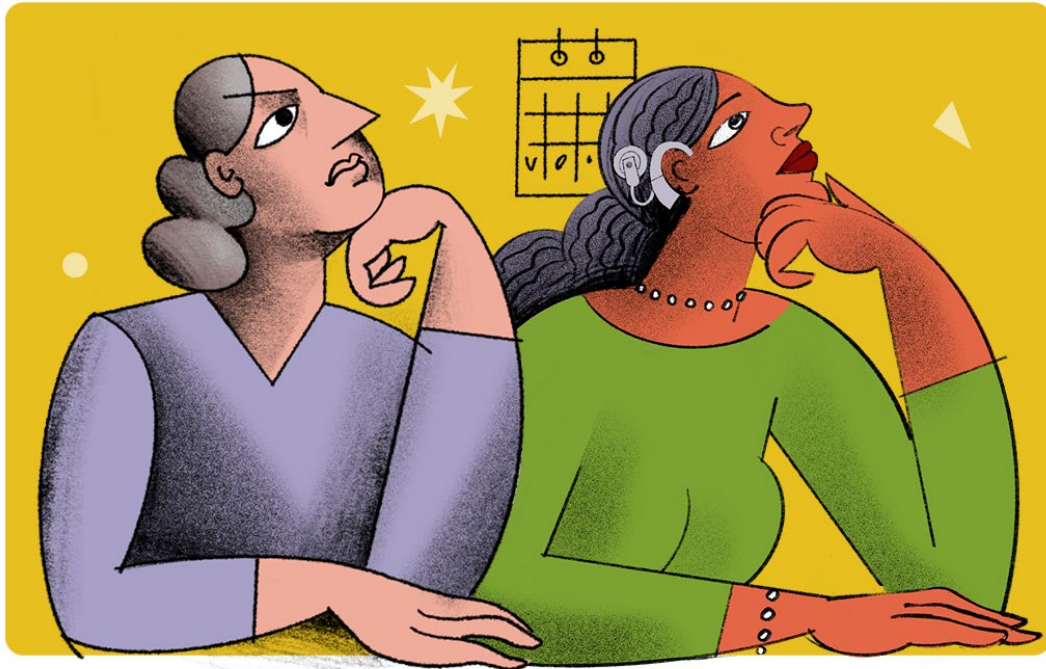


**31,393**  
Individual charities  
supported through the  
contact centre



## CHARITY TRUSTEES

Does every  
decision help  
your charity  
with its mission?



**Be certain in  
uncertain times.**

Refresh your knowledge  
on your responsibilities.  
Read our handy 5-minute guides.



Trustees should all watch this.

That's brilliant! @ChtyCommission 5 minute guides for charity #trustees have been enriched by a series of animated videos! Looking for more resources on #trusteeship? @CommFirstYorks @atr\_duk @TrusteeshipM @TrusteesUnltd @QueerTrustees @TrusteeWeek

These 5 minute reads from @ChtyCommission are really excellent. Share widely!

The Charity Commission has released some helpful guides aimed at supporting trustees. #Charities | #UKCharity | @ChtyCommission

This is excellent advice for trustees from @ChtyCommission

**Charity Commission** @ChtyCommission · Mar 28  
Could your charity be drifting away from what it was set up to do? As a trustee there are steps you can take to help stay on track.  
Read our 5-minute guide on delivering purpose: [gov.uk/guidance/chari...](https://gov.uk/guidance/chari...)

**CHARITY TRUSTEES**



**Could you be drifting into activities that your charity is not set up to do?**

1:02 PM · Apr 4, 2022 · Twitter Web App

1 Retweet 3 Likes



**Does every decision help your charity with its mission?**



**Is your charity reporting the right things at the right time?**



**How is your charity keeping everyone safe from harm?**



**Could you spot a conflict of interest and manage it?**



**Could you be drifting into activities that your charity is not set up to do?**



**Is there more you can do to prevent fraud?**



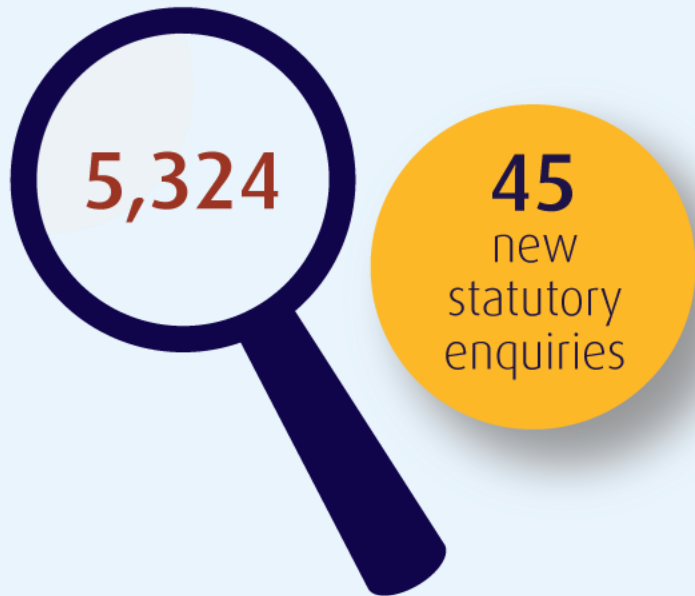
**Be certain  
in uncertain times.**



**Refresh your knowledge  
with our handy 5-minute  
guides.**



## Regulatory action cases



## Regulatory powers used



## Power to disqualify a trustee



14  
times



## Reported serious incidents



3,451



## Frank Wingett Cancer Relief

- Funds raised by community to support those with cancer
- Monies misused
- Commission finds misconduct and mismanagement and disqualifies sole trustee
- Judge orders former trustee ordered to repay £117k
- Funds to be distributed to support cancer patients in / around Wrexham



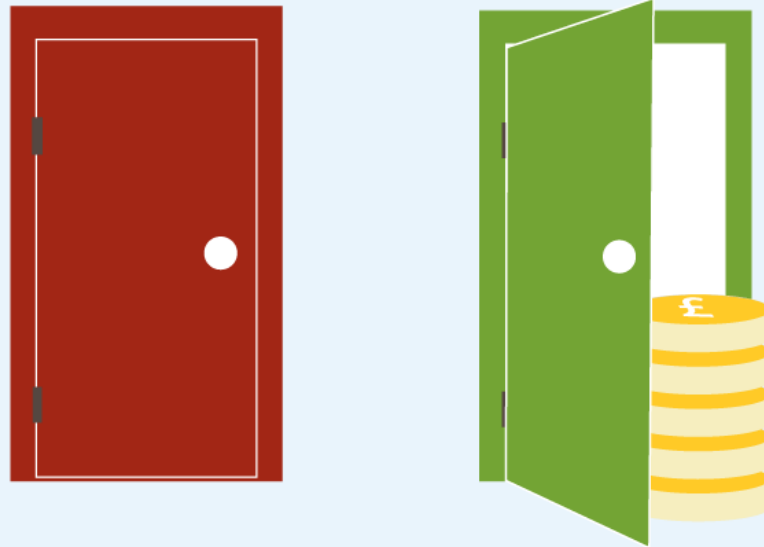
*Credit: PA Images/Simon Wingett*



## Charitable funds redirected

**£25.5m**

from inactive charities to  
community foundations or  
voluntary organisations



**£80m**  
since the  
programme  
started





**£1m**  
charitable funds  
redirected

## Dormant assets scheme in Wales



CHARITY COMMISSION  
FOR ENGLAND AND WALES

# Any questions?

**Online delegates:** Submit your question via *Slido*

**In-person attendees:** raise your hand

