



Department
for Education

DfE Energy Survey – Spring 2022

September 2022

Schools Commercial Team

Contents

List of tables	3
List of figures	4
Introduction	5
Methodology	6
Key findings	7
Data	8
Gas	8
Electricity	13
Additional Information	19
Procurement Policy Note 01/22: contracts with suppliers from Russia and Belarus - GOV.UK (www.gov.uk)	20

List of tables

Table 1: When does your current gas contract expire?	11
Table 2: How much were you quoted when renewing your gas contract?	11
Table 3: Who is your current gas supplier? Top 5 suppliers listed	12
Table 4: When does your current electricity contract expire?	16
Table 5: How much were you quoted when renewing your electricity contract? Fixed/Variable electricity tariffs	16
Table 6: How much were you quoted when renewing your electricity contract? Economy 7 electricity tariffs	17
Table 7: Who is your current electricity supplier? Top 5 suppliers listed	17

List of figures

Figure 1: How much do you currently pay per kilowatt hour for gas? Current Gas £/kWh Price (by percent of responses)	8
Figure 2: Estimate of annual gas consumption per pupil in kilowatt hours – Primary schools.....	9
Figure 3: Estimate of annual gas consumption per pupil in kilowatt hours – Secondary schools.....	10
Figure 4: How much do you currently pay per kilowatt hour for electricity? Current Electricity £/kWh Price (by percent of responses).....	13
Figure 5: Estimate of annual electricity consumption per pupil in kilowatt hours – Primary schools.....	14
Figure 6: Estimate of annual electricity consumption per pupil in kilowatt hours – Secondary schools	15

Introduction

The Department for Education issued a survey to all schools and trusts in May 2022 asking them about their gas and electricity contracts, including requesting information about prices, consumption, contract renewal dates, suppliers, and quoted replacement contract prices. The survey ran throughout May and ended during half term in June.

Schools are currently facing extremely high and volatile energy prices due to multiple and changing market conditions. As schools are autonomous in their contracting decisions, the Department has no visibility on schools' contract information and cannot quantify the true impact of the energy prices on school budgets, nor the scale/risk of Russian supplied gas to the sector.

The survey aimed to:

- understand how exposed schools' budgets are to the current energy price volatility, to assess potential options to support schools.
- assess any potential impacts to schools caused by sanctions placed on Russian suppliers of energy.

Methodology

A survey was sent out to schools in England in May 2022 for schools to submit data on gas and electricity contracts. The survey could be completed on an individual school basis or trusts and local authorities could answer on behalf of multiple schools by providing averages. All questions were voluntary, so respondents were not mandated to provide any information. So, whilst over 1,000 responses were returned, not all had information available for analysis. The data section shows how many responses could be used for each point.

Responses were matched via stated school URN, trust UID, or local authority name to [Get Information about Schools](#) records. Those not matched to a state funded school, trust, or local authority were omitted from analysis.

Certain boundaries were placed on responses to avoid overstating or understating analysis. These were in accordance with market information and similarity to other responses. The boundaries can be found in the caveats in the data section (page 6 onwards).

The survey closed for responses in June 2022.

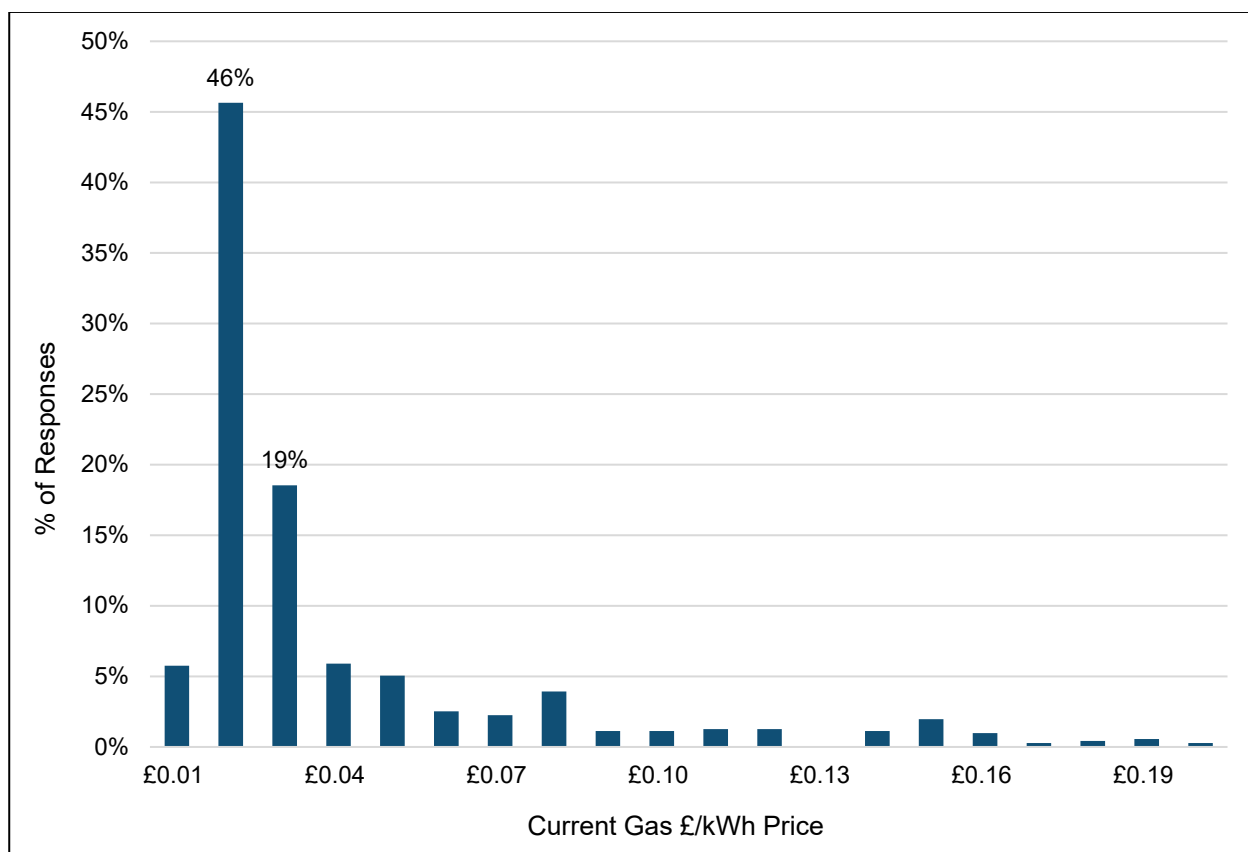
Key findings

- In total over 1,000 responses were submitted from a mixture of individual schools (c. 900), trusts (c. 150), and local authorities (14). This represented under 2,300 schools, less than 10% of the overall estate; the results are therefore not fully representative of the whole sector and inferences should not be drawn from these findings.
- Respondents were not mandated to provide information for each question so not all responses were used in analysis. Therefore, sample sizes for each point are limited and the figures can only be taken to be indicative of the responses given.
- Respondents on average said they currently pay between £0.02 to £0.04 per kilowatt hour (kWh) for gas, but there is a broad overall distribution.
- From schools responding to the survey, on average it is estimated secondary schools consume around 1.25 times more gas per pupil than primary schools annually, but there is variation in responses.
- Respondents on average said they currently pay between £0.14 to £0.20 per kilowatt hour (kWh) for electricity, but there is a broad overall distribution.
- From schools responding to the survey, on average it is estimated secondary schools consume around 1.5 times more electricity per pupil than primary schools annually, but there is variation in responses.
- Common times for contract renewals for both gas and electricity are September/October and March/April.
- Most respondents said they are on fixed term contracts for both gas and electricity.
- There are common generator/distributor suppliers to schools across gas and electricity, including British Gas and TotalEnergies. See Figures 6 and 13 for more detail.
- Very few respondents said they have started looking to renew their contracts and provided price information on quotes received for new contracts (82 responses for gas and 63 for electricity). Due to this limited sample size, the survey alone cannot determine the impact of price increases on schools.

Data

Gas

Figure 1: How much do you currently pay per kilowatt hour for gas? Current Gas £/kWh Price (by percent of responses)



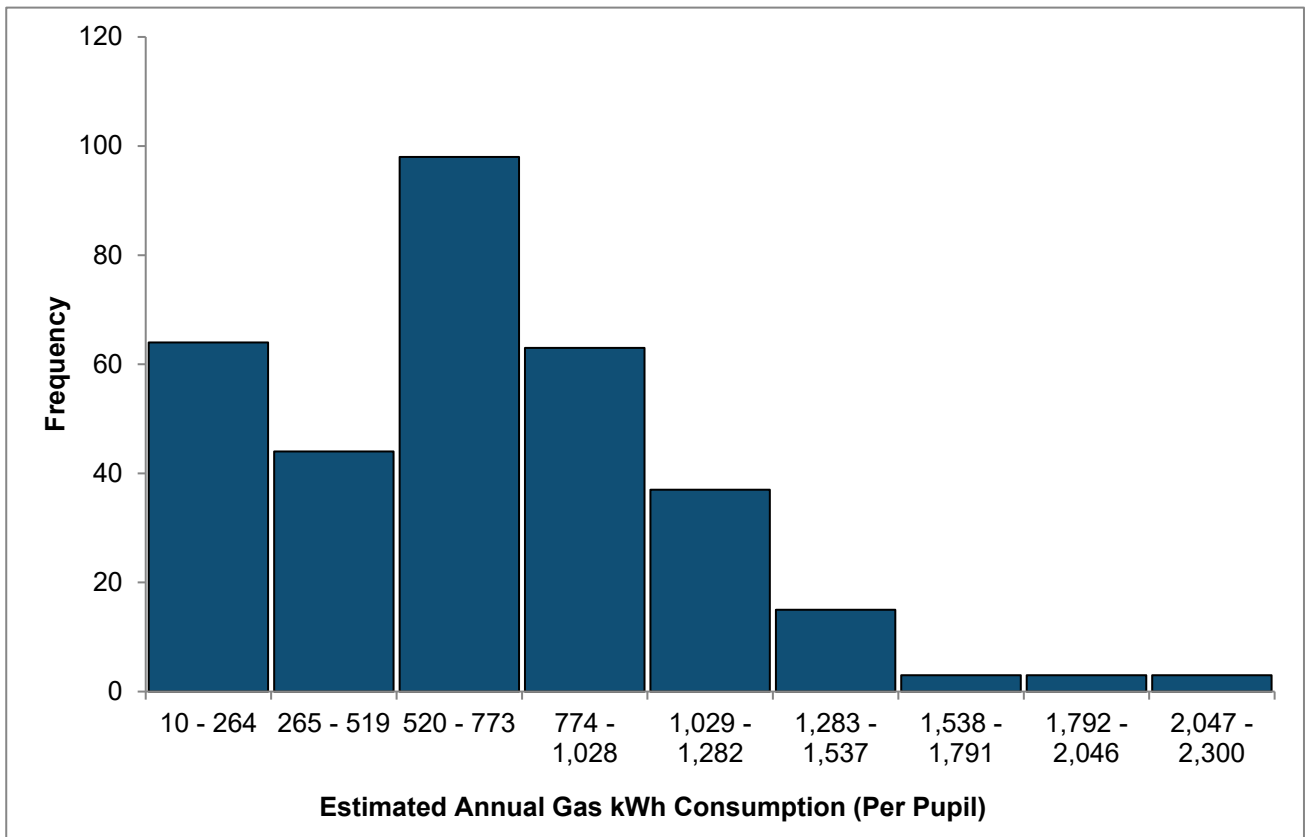
Base: 712 responses matched to a school, trust, or local authority

Source: DfE Energy Survey – Spring 2022

Caveats

- Includes 712 responses matched to a school, trust, or local authority.
- Omits responses stating they currently pay less than £0.01 per kWh or above £0.20 per kWh.
- Trust and local authority responses are the average across all schools they were responding on behalf of.

Figure 2: Estimate of annual gas consumption per pupil in kilowatt hours – Primary schools



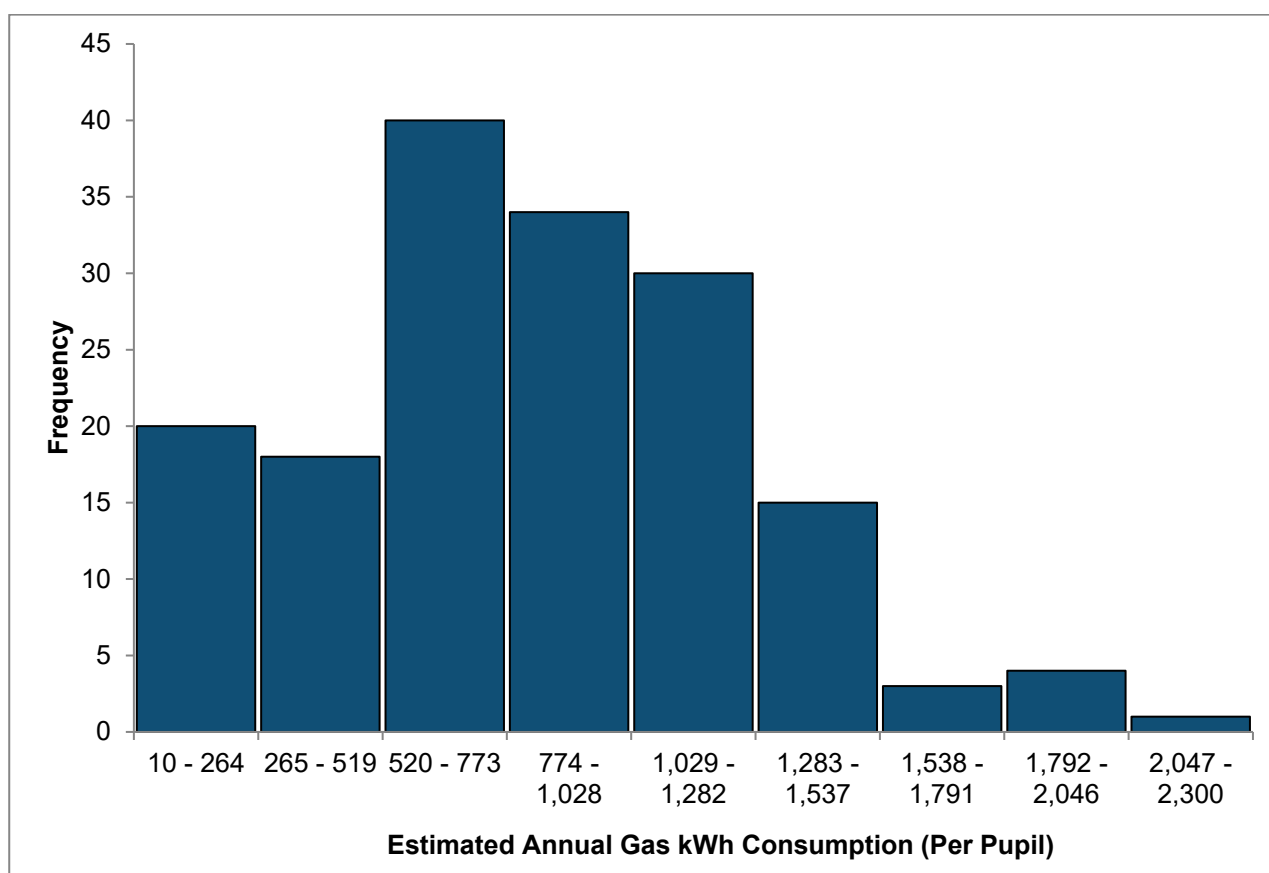
Base: 330 responses matched to a primary school

Source: DfE Energy Survey – Spring 2022

Caveats

- Includes 330 responses matched to a primary school.
- Omits responses stating they consume less than 10,000 kWh annually or more than 750,000 kWh annually, to remove anomalies,
- Pupil headcount was taken from Get Information about Schools (GIAS) records and matched to stated URN. Stated annual consumption was then divided by this headcount to generate a per pupil estimate.
- There may be instances where stated energy consumption was taken from Covid-19 impacted timeframes whereby consumption may have been lower than usual.
- The stated energy consumption timeframe and GIAS pupil records date may also not be perfectly aligned.

Figure 3: Estimate of annual gas consumption per pupil in kilowatt hours – Secondary schools



Base: 165 responses matched to a secondary school

Source: DfE Energy Survey – Spring 2022

Caveats

- Includes 165 responses matched to a secondary school.
- Omits responses stating they consume less than 25,000 kWh annually or more than 1,850,000 kWh annually, to remove anomalies.
- Pupil headcount was taken from GIAS records and matched to stated URN. Stated annual consumption was then divided by this headcount to generate a per pupil estimate.
- There may be instances where stated energy consumption was taken from Covid-19 impacted timeframes whereby consumption may have been lower than usual.
- The stated energy consumption timeframe and GIAS pupil records date may also not be perfectly aligned.

Table 1: When does your current gas contract expire?

	%
% of gas contracts expiring by 31 October 2022	33%
% of gas contracts expiring by 30 April 2023 (cumulative)	60%

Caveats

- Includes 575 responses matched to schools.
- Omits responses with an expiry date of before the survey launch.

Table 2: How much were you quoted when renewing your gas contract?

	Mean average
Average current kilowatt hour price for gas	£0.03 per kWh
Average quoted kilowatt hour price for gas	£0.09 per kWh

Caveats

- Includes 82 responses matched to schools. This sample size is very small and cannot be seen as accurately representative of the energy landscape across the whole school estate.
- Omits responses stating they currently pay less than £0.01 per kWh or above £0.20 per kWh.
- Omits responses stating they were quoted less than £0.01 per kWh or above £0.50 per kWh, to remove anomalies.

Table 3:Who is your current gas supplier? Top 5 suppliers listed

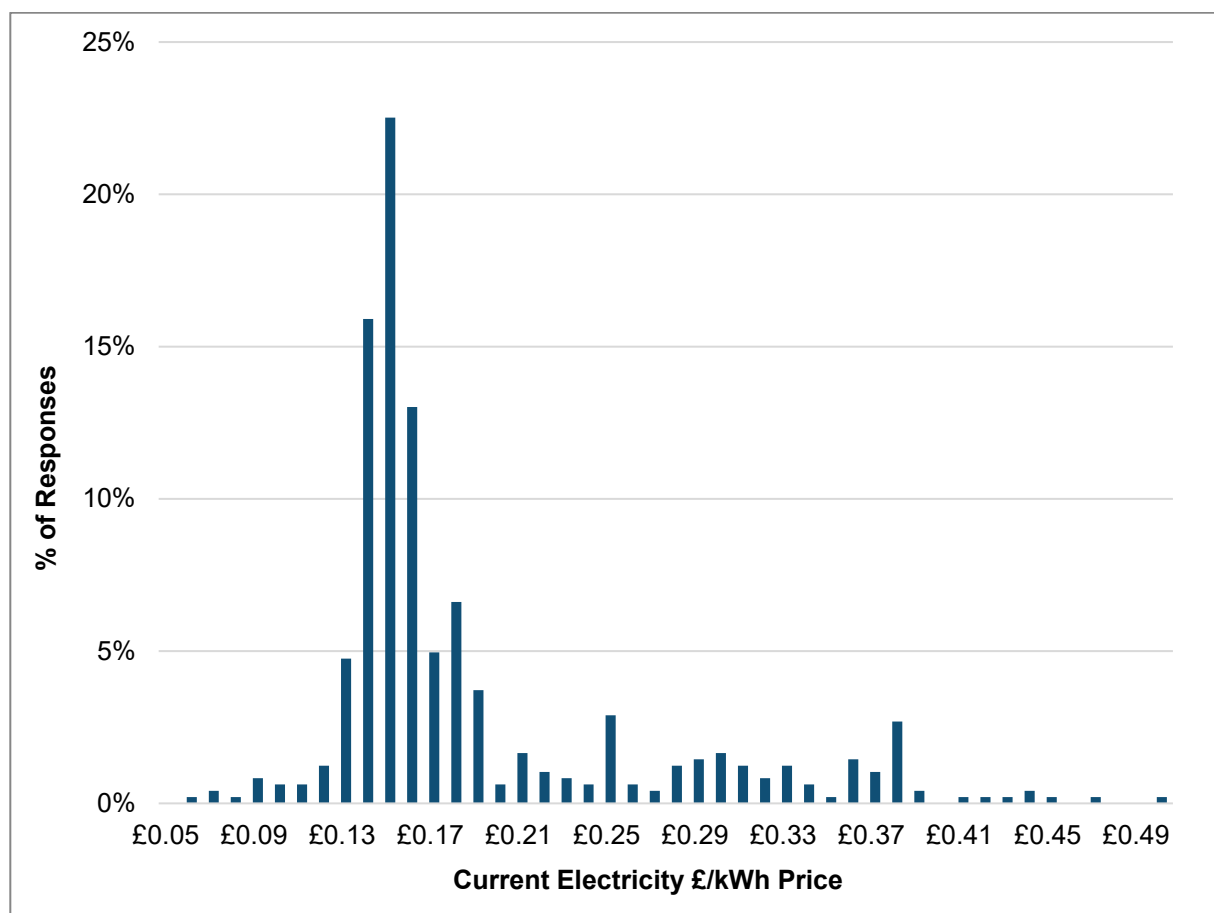
Gas Supplier
Crown Gas and Power
Corona Energy
British Gas
TotalEnergies
Gazprom Energy

Caveats

- Top 5 suppliers are based off 613 overall responses matched to schools.
- Top 5 suppliers are in no particular orders

Electricity

Figure 4: How much do you currently pay per kilowatt hour for electricity? Current Electricity £/kWh Price (by percent of responses)



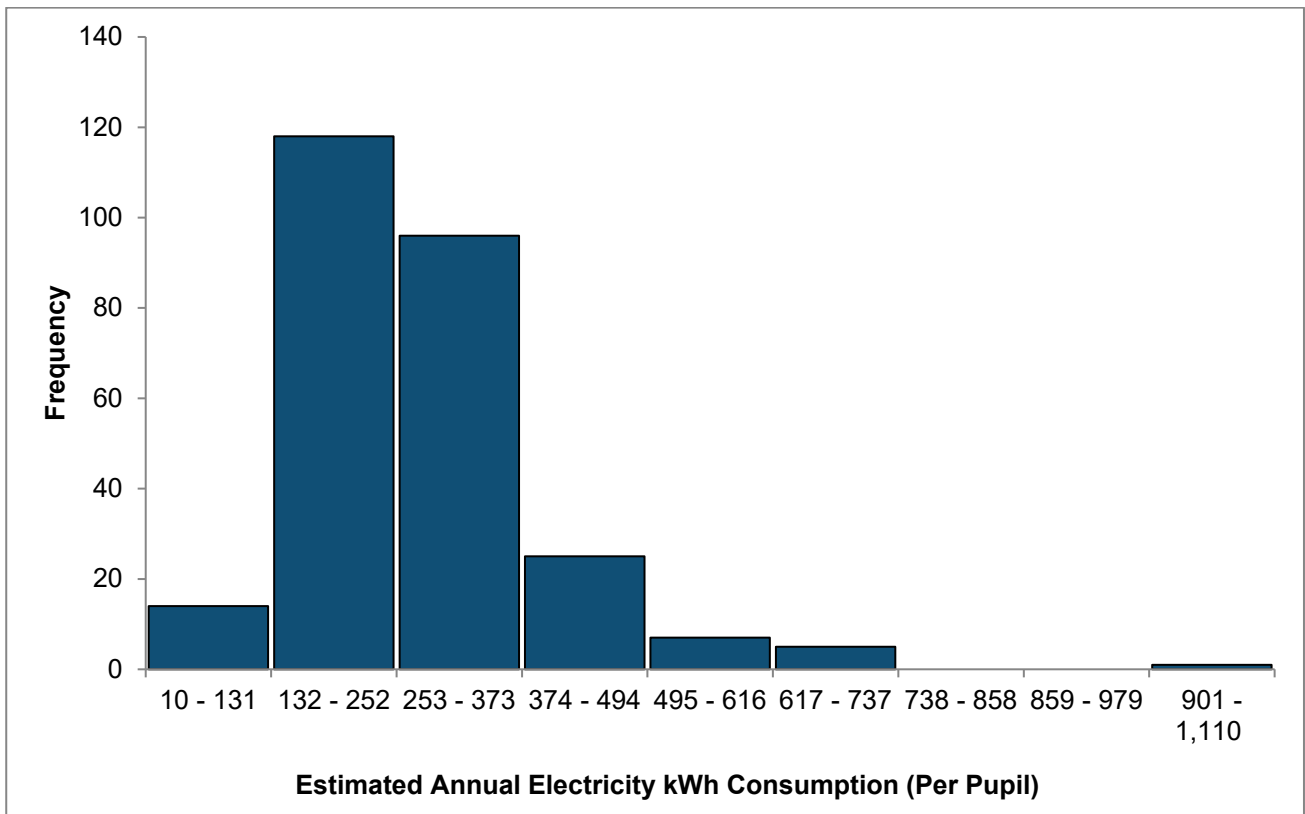
Base: 484 responses matched to a school, trust, or local authority

Source: DfE Energy Survey – Spring 2022

Caveats

- Includes 484 responses matched to a school, trust, or local authority.
- Omits responses stating they currently pay less than £0.05 per kWh or above £0.50 per kWh.
- Trust and local authority responses are the average across all schools they were responding on behalf of.
- Does not include responses from Economy 7 tariffs (where different rates are paid during the day and night).

Figure 5: Estimate of annual electricity consumption per pupil in kilowatt hours – Primary schools



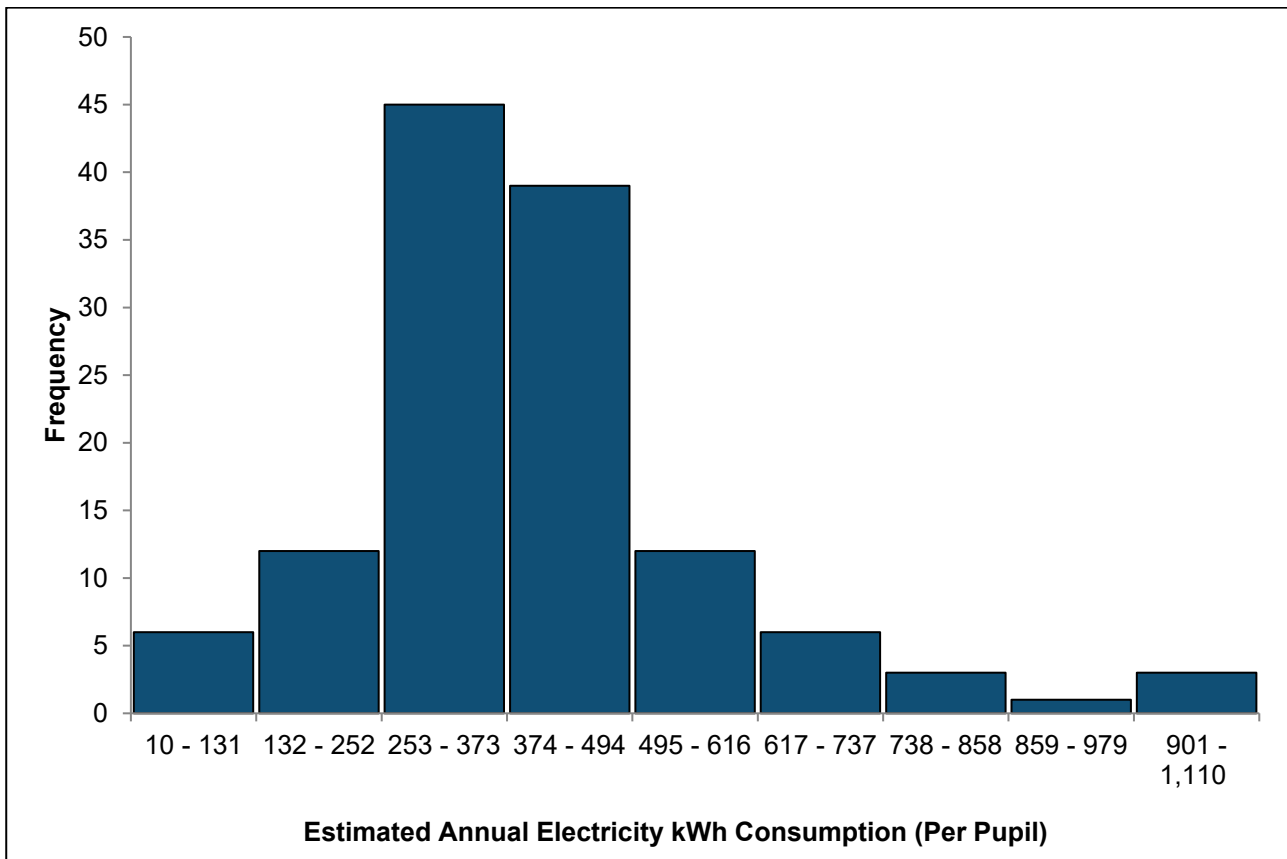
Base: 266 responses matched to a primary school

Source: DfE Energy Survey – Spring 2022

Caveats

- Includes 266 responses matched to a primary school.
- Omits responses stating they consume less than 10,000 kWh annually or more than 285,000 kWh annually, to remove anomalies.
- Pupil headcount was taken from Get Information about Schools (GIAS) records and matched to stated URN. Stated annual consumption was then divided by this headcount to generate a per pupil estimate.
- There may be instances where stated energy consumption was taken from Covid-19 impacted timeframes whereby consumption may have been lower than usual.
- The stated energy consumption timeframe and GIAS pupil records date may also not be perfectly aligned.

Figure 6: Estimate of annual electricity consumption per pupil in kilowatt hours – Secondary schools



Base: 127 responses matched to a secondary school

Source: DfE Energy Survey – Spring 2022

Caveats

- Includes 127 responses matched to a secondary school.
- Omits responses stating they consume less than 20,000 kWh annually or more than 800,000 kWh annually to remove anomalies.
- Pupil headcount was taken from GIAS records and matched to stated URN. Stated annual consumption was then divided by this headcount to generate a per pupil estimate.
- There may be instances where stated energy consumption was taken from Covid-19 impacted timeframes whereby consumption may have been lower than usual. The stated energy consumption timeframe and GIAS pupil records date may also not be perfectly aligned.

Table 4: When does your current electricity contract expire?

	%
% of electricity contracts expiring by 31 October 2022	39%
% of electricity contracts expiring by 30 April 2023 (cumulative)	67%

Caveats

- Includes 451 responses matched to schools.
- Omits responses with an expiry date of before the survey launch.

**Table 5: How much were you quoted when renewing your electricity contract?
Fixed/Variable electricity tariffs**

	Mean average
Average current kilowatt hour price for electricity	£0.16 per kWh
Average quoted kilowatt hour price for electricity	£0.32 per kWh

Caveats

- Includes 40 responses matched to schools. This sample size is very small and cannot be seen as accurately representative of the energy landscape across the whole school estate.
- Omits responses stating they currently pay less than £0.05 per kWh or above £0.50 per kWh.
- Omits responses stating they were quoted less than £0.05 per kWh or above £0.85 per kWh, to remove anomalies.
- Does not include responses from Economy 7 tariffs (where different rates are paid during the day and night). Figure 12 shows responses for these tariffs.

**Table 6: How much were you quoted when renewing your electricity contract?
Economy 7 electricity tariffs**

	Mean average
Average current kilowatt hour price for electricity – day time	£0.17 per kWh
Average quoted kilowatt hour price for electricity – day time	£0.33 per kWh
Average current kilowatt hour price for electricity – night time	£0.12 per kWh
Average quoted kilowatt hour price for electricity – night time	£0.23 per kWh

Caveats

- Includes 23 responses matched to schools. This sample size is very small and cannot be seen as accurately representative of the energy landscape across the whole school estate.
- Omits responses stating they currently pay less than £0.05 per kWh or above £0.50 per kWh during the day or at night.
- Omits responses stating they were quoted less than £0.05 per kWh or above £0.85 per kWh during the day or at night, to remove anomalies.
- Does not include responses from Fixed or Variable tariffs (where a standard rate is paid throughout a full day). Figure 11 shows responses for these tariffs.

Table 7: Who is your current electricity supplier? Top 5 suppliers listed

Electricity Supplier
EDF Energy
British Gas
Npower
SSE

TotalEnergies

Caveats

- Top 5 suppliers are based off 676 overall responses matched to schools.
- Top 5 suppliers are in no particular order.

Additional Information

- As the sample size is limited, the figures can only be taken to be indicative of responses given and may not accurately represent the energy landscape across all schools within the sector. Results should be considered in relation to the limited sample of answers available.
- All schools can access a range of school resource management (SRM) tools to help them get the best value from their resources, to help them save on regular purchases and reduce non-teaching costs.
- Our SRM tools include recommended deals for energy costs and ancillary services relating to energy, which can be accessed [here](#).
- Schools and Trusts can review the DfE buying for schools' guidance:
 - [Buying for schools - Gas - Guidance - GOV.UK](#)
 - [Buying for schools - Electricity - Guidance - GOV.UK](#)
- The Get Help Buying for Schools service ([here](#)) can offer support to schools in switching and entering new contracts.
- We know that every school's circumstances are different, and where schools are in serious financial difficulty, they should contact their local authority or the Education and Skills Funding Agency (ESFA).
- Energy suppliers: on 28th March 2022, Cabinet Office issued a Procurement Policy Note 01/22: contracts with suppliers from Russia and Belarus. Where it is relevant and proportionate to do so, settings should consider applying the approach set out in the Procurement Policy Note:

Procurement Policy Note 01/22: contracts with suppliers from Russia and Belarus - GOV.UK (www.gov.uk)



Department
for Education

© Department for Education 2022

Reference: RR1278

ISBN: 978-1-83870-417-9

For any enquiries regarding this publication, contact us at
www.education.gov.uk/contactus

This document is available for download at www.gov.uk/government/publications