

## S62A/22/0006 Berden Hall Farm, Ginns Road, Berden

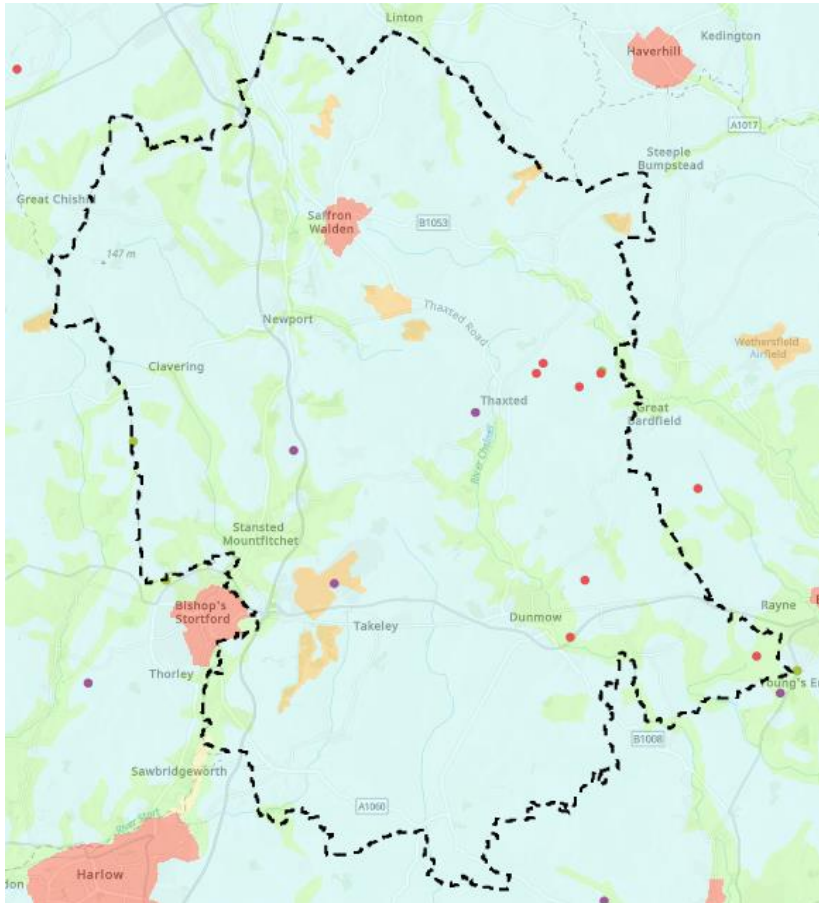
### Addendum to Planning Design and Access Statement

#### Section 8.87 to 8.88 'Other Matters - Agricultural Land Classification'

The plan below shows the Uttlesford District Council boundary overlaid with the Agricultural Land Classification map<sup>1</sup>, the points indicate operational renewable assets, the red dots are solar developments. There are 12 listed renewable operational developments within Uttlesford DC, 7 solar sites, 2 batteries and 3 AD plants. The combined total output of the solar schemes is 88.8MW, 77MW of that solar has been consented and built on Grade 2 land<sup>2</sup>.

Typically, 1MW of solar will occupy 4 acres of land, using this calculation, we can deduce that if this scheme were to be consented there would be up to 355 acres of land within Uttlesford occupied by solar farms, this would account for 0.34% of farmland within the district. This proposal consists of 37% grade 2 and 63% grade 3a/3b which illustrates how the proposal has avoided BMV land as far as reasonably practical given the extensive BMV land across the District as evidenced by the data and plan below:

- Grade 1 - 0
- Grade 2 – 515.73028082 km<sup>2</sup> (80.4%)
- Grade 3 - 109.54553782 km<sup>2</sup> (17%)
- Grade 4 – 0.1195121 km<sup>2</sup> (0.01%)
- Non-Agricultural – 12.72772724 km<sup>2</sup> (1.9%)
- Urban – 3.1288002 (0.48%)



<sup>1</sup> <https://www.data.gov.uk/dataset/952421ec-da63-4569-817d-4d6399df40a1/provisional-agricultural-land-classification-alc>

