

Eyesight test

I'll point to a number plate.

Please tell me the number plate number.
Or you can write it down if you prefer.

'Tell me' question

Tell me how you'd check that the brakes are working before starting a journey.

'Tell me' question

Tell me where you'd find the information for the recommended tyre pressures for this car. Also tell me how you should check the tyre pressures.

'Tell me' question

Tell me how to adjust your head restraint correctly, so it provides the best protection if you crash.

'Tell me' question

Tell me how you'd check that the tyres have enough tread depth and that their general condition is safe to use on the road.

‘Tell me’ question

**Tell me how you’d check that the headlights and tail-lights are working.
(No need to get out of the car)**

'Tell me' question

Tell me how you'd know if there was a problem with your anti-lock braking system.

'Tell me' question

Tell me how you'd check the direction indicators are working. (No need to get out of the car)

'Tell me' question

Tell me how you'd check the brake lights are working on this car.

'Tell me' question

Tell me how you'd check the power assisted steering's working before starting a journey.

‘Tell me’ question

Tell me how you’d switch on the rear fog light(s). Also explain when you’d use it/them. (No need to get out of the car)

'Tell me' question

Tell me how you switch your headlight from dipped to main beam. Also explain how you'd know the main beam is on.

'Tell me' question

Open the bonnet and tell me how you'd check that the engine has enough oil.

Please do not touch the engine.

'Tell me' question

Open the bonnet and tell me how you'd check that the engine has enough engine coolant.

Please do not touch the engine.

‘Tell me’ question

Open the bonnet and tell me how you’d check that you have a safe level of hydraulic brake fluid.

Please do not touch the engine.

Emergency Stops



You will not be expected to do an emergency stop unless you have stopped normally beforehand.

Your Driving Examiner will give you more instructions once the car is stationary.

Preparing for your driving test

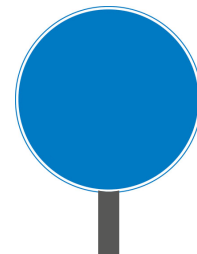
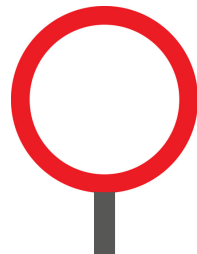
- **I'll use these hand gestures to give directions for moving off, pulling up, turning left and right**
- **I will not give you spoken or written instructions when you're driving**
- **Where it's safe and legal, I'll ask you to pull up on the left with this hand gesture. Then I can give you your next instructions**
- **I'll ask you to pull up regularly. Please do not worry about this**
- **If you don't understand an instruction, raise your left hand and I will repeat it. If you still don't understand, please pull up on the left so I can explain**

Starting your driving test

- **The test will include independent driving, various roads and traffic conditions**
- **I'll ask you to complete 1 manoeuvre. And I may ask you to do an emergency stop. If we include an emergency stop, I'll ask you to pull up on the left first. Then I'll explain what to do. I will not ask you to do an emergency stop without warning or explanation. You'll have practised all these manoeuvres with your instructor/accompanying driver.**
- **During the drive, continue ahead, unless traffic signs direct you otherwise, When I want you to turn left or right, I'll direct you in plenty of time**
- **Move off when you're ready, please**

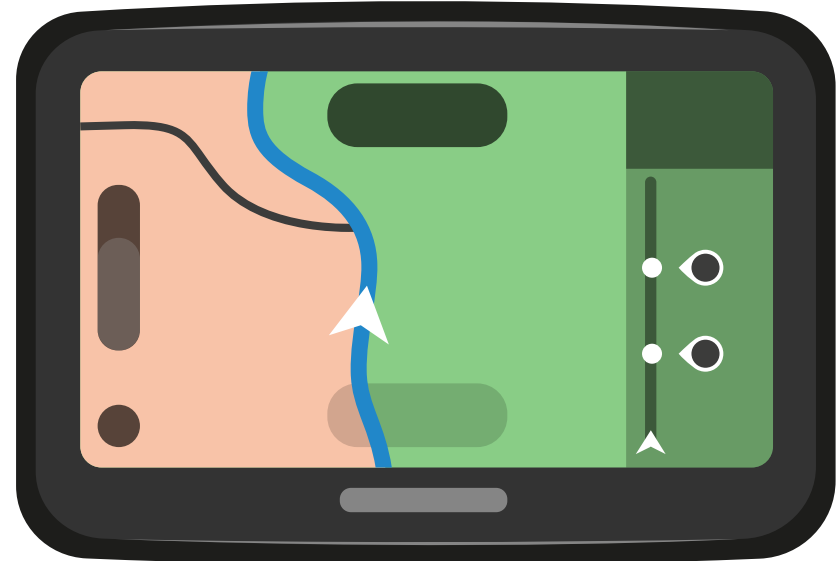
Independent driving (signs)

- **Soon I'd like you to drive for a while independently. I'd like you to follow a destination on road traffic signs**
- **I will not give you spoken or written instructions when you're driving**
- **If I need to change the destination during the independent driving section, I will ask you to pull up on the left. Once you have stopped I will give you the new destination to follow**
- **Continue to follow the traffic signs until I tell you not to**
- **I'll explain where you should drive to. The first place is
If at any time you do not understand, please raise your left hand**



Independent driving (sat nav)

- **Soon I'd like you to drive for a while independently. I'd like you to follow directions from the sat nav**
- **Continue to follow the sat nav until I tell you not to**
- **If at any time you do not understand, please raise your left hand**

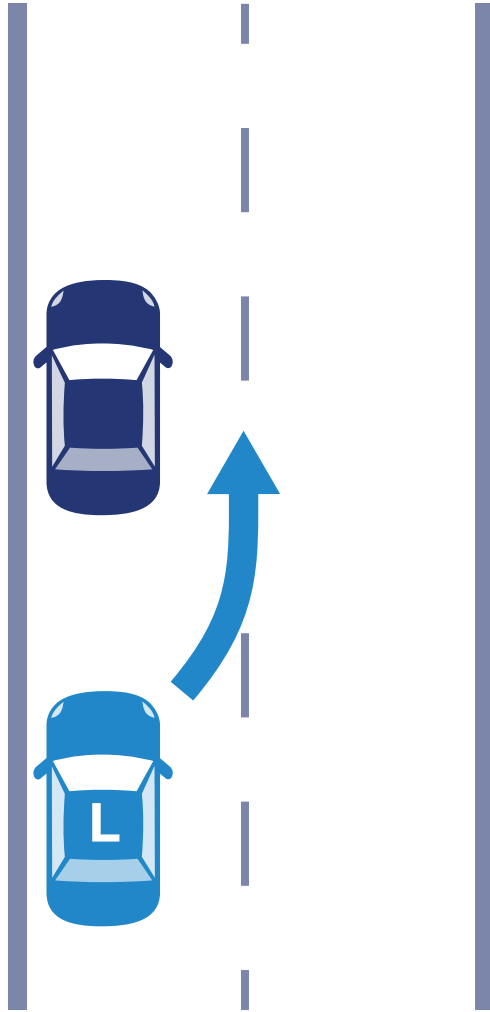


Independent driving complete

That's the end of the independent driving. I'll now direct you using our agreed hand gestures

Drive on when you're ready

Angle start



- **Pull up on the left just before you get to the next parked car please**
- **Leave enough room to move away. About a car's length.**
- **Do you have any questions?**



**Thank you, drive on
when you're ready**

'Show me' question

When it's safe to do so, can you show me how you wash and clean the rear windscreen?

'Show me' question

When it's safe to do so, can you show me how you wash and clean the front windscreen?

'Show me' question

When it's safe to do so, can you show me how you'd switch on your dipped headlights?

'Show me' question

When it's safe to do so, can you show me how you would set the rear demister?

'Show me' question

When it's safe to do so, can you show me how you would use the horn?

'Show me' question

When it's safe to do so, can you show me how you'd demist the front windscreen?

'Show me' question

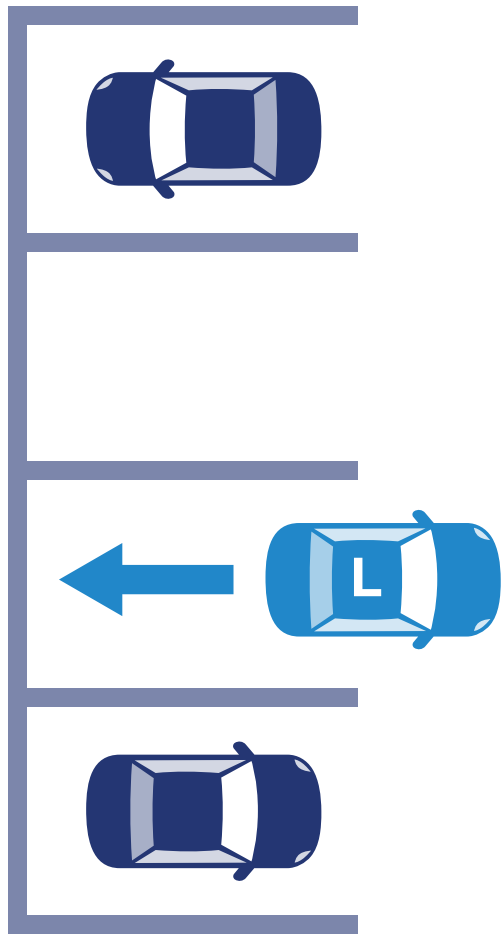
When it's safe to do so can you show me how you'd open and close the side window?



**Thank you, drive on when
you're ready**

**Remember what I've just asked
you to show me. When it's safe,
please do that in your own time**

Reverse bay park (start of test)

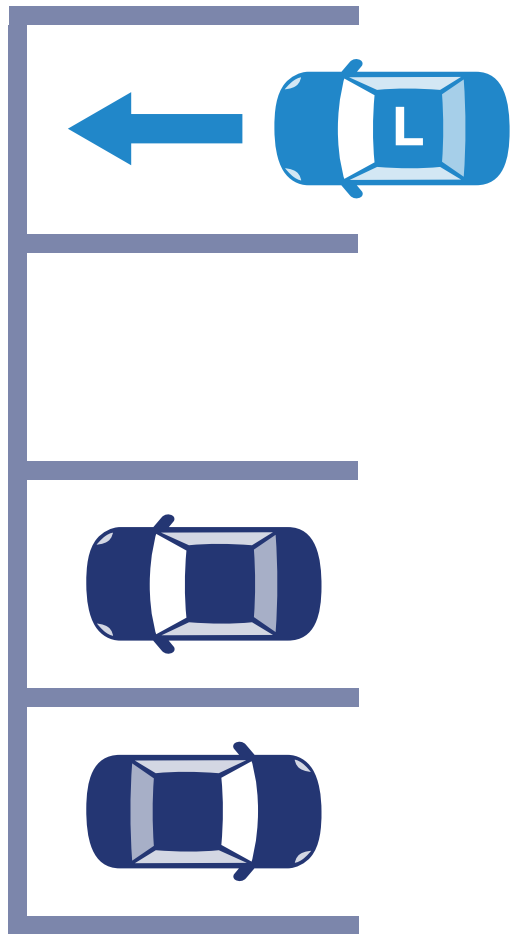


- I'd like you to pull forward, either to the left or the right, so that your wheels are straight
- Reverse into a convenient bay
- Finish within that bay
- Do you have any questions?



**Thank you, drive on
when you're ready**

Forward park into a bay



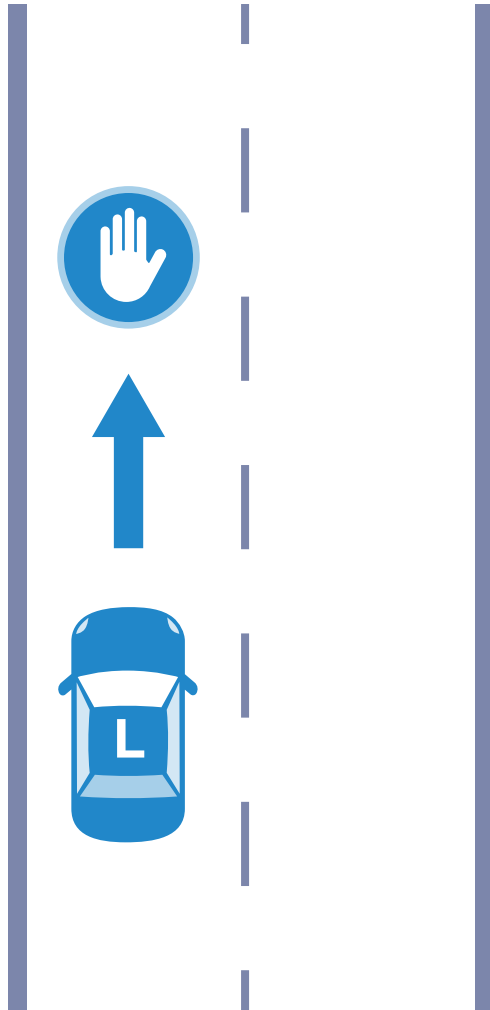
- **Drive forward into a convenient bay, either to the left or right**
- **Finish within that bay**
- **Do you have any questions?**



Thank you

**Please reverse out of
the bay and drive on
when you're ready**

Emergency stop



- **Soon I'll ask you to do an emergency stop**
- **When I give this gesture (demonstrate) I'd like you to stop as quickly and safely as possible**
- **Before I give the gesture I'll look round to make sure it's safe, but please wait for my signal before stopping**
- **Do you understand the instructions?**

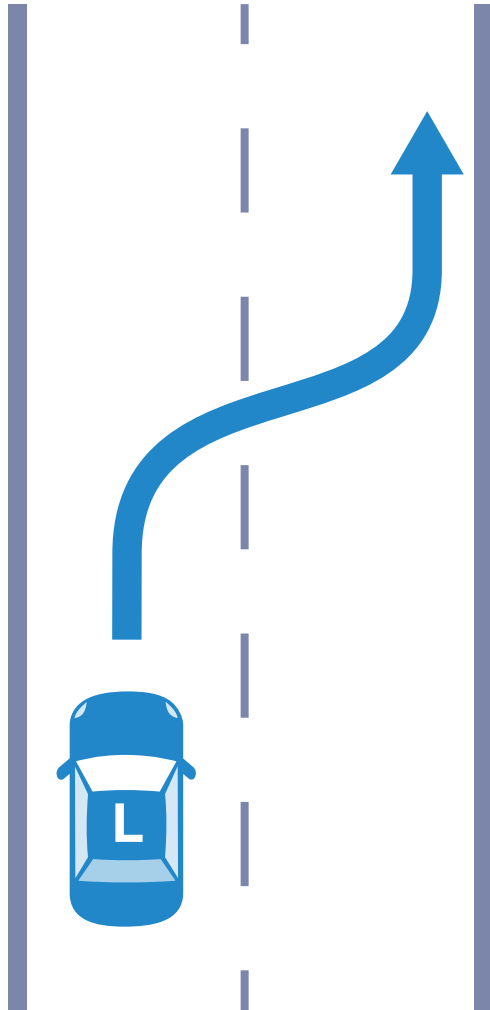


Thank you.

**I will not ask you to do
that again.**

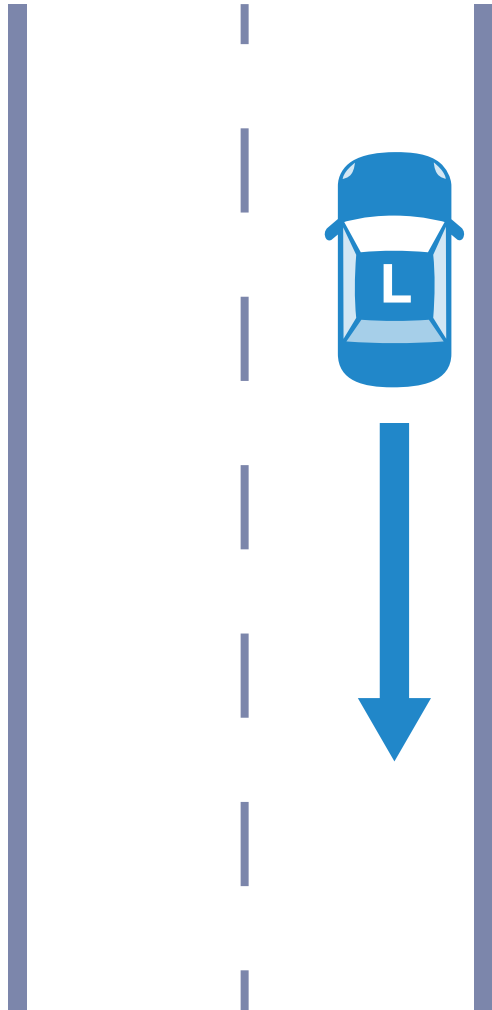
Drive on when you're ready.

Right reverse (pull up)



- **Soon I'd like you to pull up on the right when it's safe to do so**
- **This is the gesture I'll give to start the exercise (demonstrate)**
- **Do you have any questions?**

Right reverse (reverse)

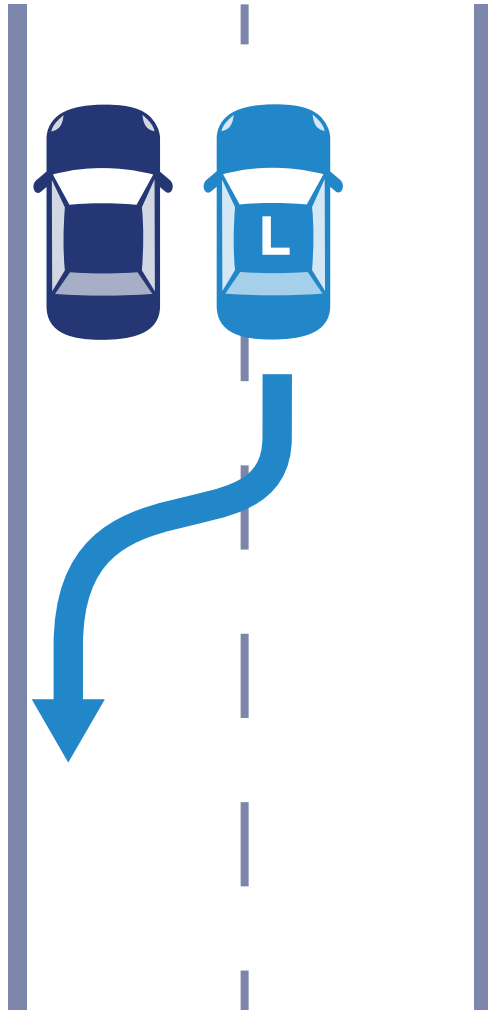


- **I'd like you to reverse back for about 2 car lengths**
- **Please keep reasonably close to the kerb**
- **Do you have any questions?**



**Thank you, drive on
when you're ready**

Reverse park on road

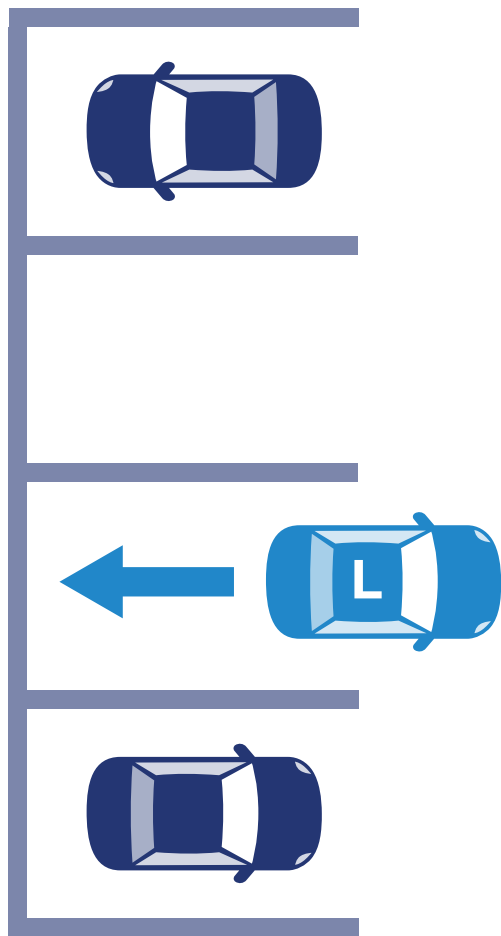


- **I'd like you to drive forward and stop alongside the car ahead**
- **Then reverse in and park reasonably close to, and parallel with, the kerb**
- **Try to complete the exercise within about 2 car lengths**
- **Do you have any questions?**



**Thank you, drive on
when you're ready**

Reverse bay park (end of test)



- I'd like you to reverse park in the car park
- Drive forward into the car park
- Reverse into a convenient parking bay
- Finish within that bay
- Do you have any questions?



**Thank you, that is the end of
the test.**

**Stop the engine and make
yourself comfortable.**

**Please give me a few moments
to write my report.**

Examiner took action

- **I've asked you to pull up to tell you that I took action**
- **I'll explain in detail at the end of the test why I took action**
- **Please take a moment to calm yourself**



**Thank you, drive on
when you're ready**



**Thank you, that is the end of
the test.**

**Stop the engine and make
yourself comfortable.**

**Please give me a few moments
to write my report.**

That's the end of the test. I'm pleased to tell you that you've

Passed

I'll explain your test faults. Then you can continue to improve your driving now you have a full licence.

- May I see your driving licence again please? Please confirm that this is your address
- Would you like DVLA to send your full licence to you automatically? I'll need to keep your old licence
- Please read and sign the health declaration
- Here's your pass certificate. You should receive your new licence within about 20 working days. If you have any problems, there are contact details on the back
- We'll email your test summary to you soon

Congratulations

That's the end of the test. I'm sorry, but you have

Not passed

To help you I'll explain why. Would you like your instructor to join us?