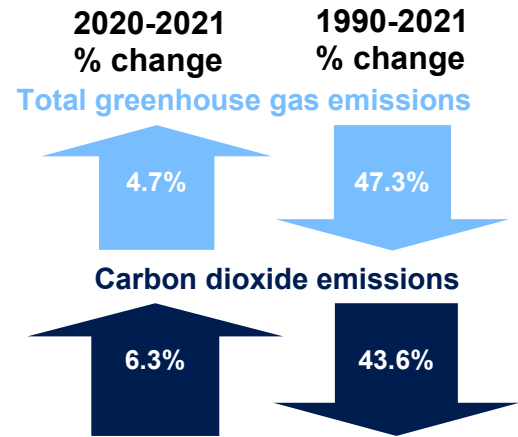
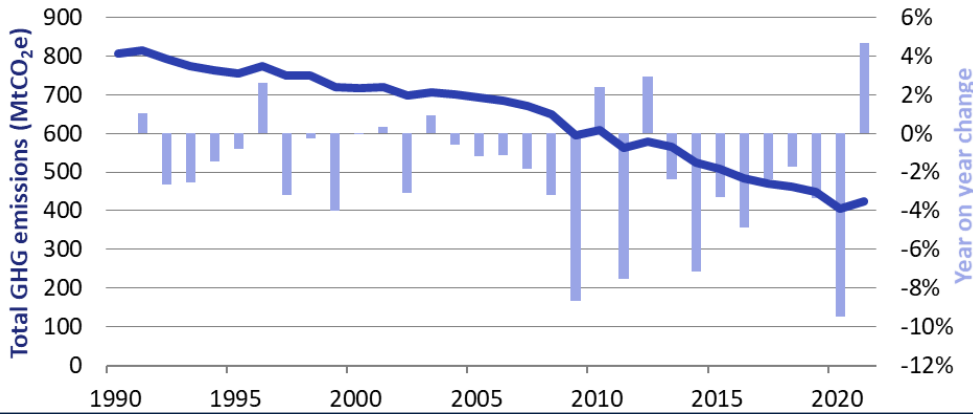
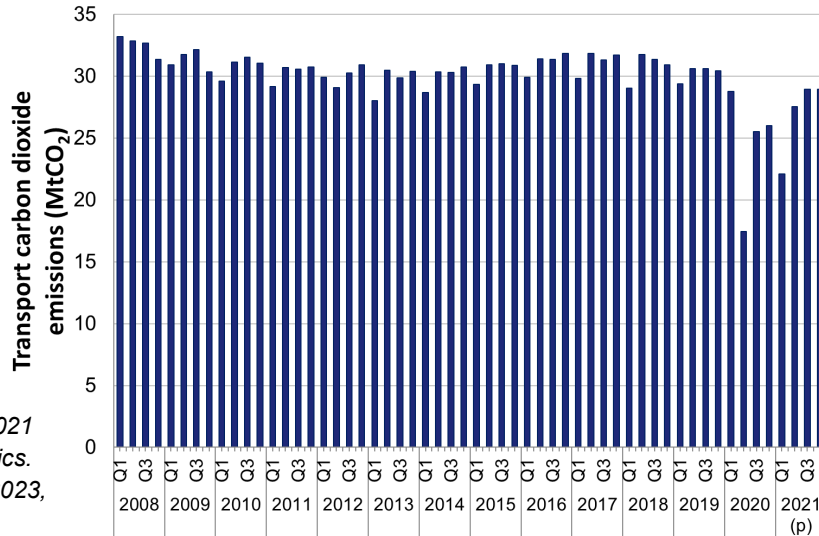


In 2021, total UK territorial greenhouse gas emissions were 424.5 million tonnes carbon dioxide equivalent (MtCO<sub>2</sub>e), 4.7% higher than 2020, yet 5.2% lower than 2019, reflecting the impacts of the COVID-19 restrictions on emissions.



The increase in carbon dioxide emissions was driven by all sectors, with transport emissions increasing the most in 2021

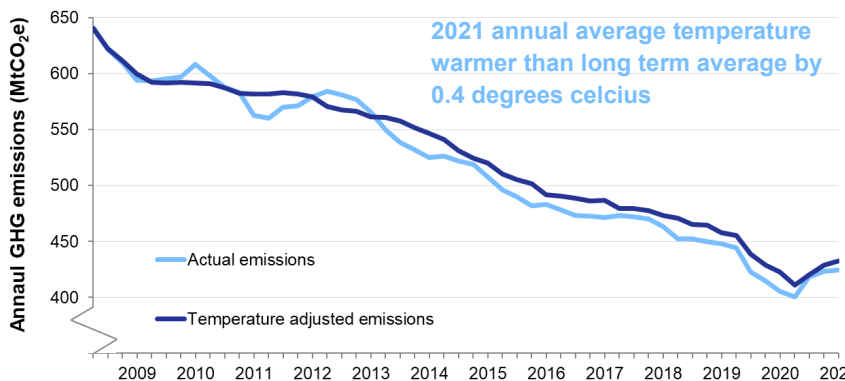
Sector	2020-2021 % change	1990-2021 % change
Energy supply (including power sector)	3.3%	66.9%
Business	5.9%	41.5%
Transport	10.0%	14.2%
Residential	5.8%	12.9%
Public	6.3%	40.5%



For the sectors not included here, provisional CO<sub>2</sub> estimates for 2021 cannot be made as they cannot be derived from the energy statistics. Final 2021 estimates for all sectors will be published in February 2023, which will include total emissions by sector.

## Adjusting emissions for external temperature does not change the long term trend

Temperature adjusted emissions estimates remove the estimated effect of external temperatures. Emissions are calculated for each quarter, with the preceding four quarters summed to create a rolling annual total.



The largest driver of the long term fall in UK emissions has been the decrease of emissions from power stations, due to the shift in fuel use within power stations away from using coal for electricity generation towards gas and renewables

