



Omicron daily overview: 28 December 2021

Summary

UK total case numbers

	Confirmed Omicron cases	Change from previous report	SGTF cases*	Change from previous report
England	159,204	+16,133	355,714	+38,458
Northern Ireland	10,458	+1,136	N/A	N/A
Scotland	6,154	-	32,669	-
Wales	1,385	-	2,553	-
Cumulative total	177,201	+17,269	390,936	+38,458

Data up to 6pm 27 December 2021 for England

Data up to 4pm 27 December 2021 for Northern Ireland

Data up to 5pm 23 December 2021 for Scotland

Data up to 5pm 23 December 2021 for Wales

Notes to table

* SGTF cases in the above table excludes persons ruled out as other variants.

Scotland is no longer separating VOC Omicron cases in daily reporting and will update weekly.

No update received from Wales due to Christmas and Bank Holiday working arrangements.

Northern Ireland figures are provisional and may be subject to change.

Hospitalisations and deaths

	Hospitalisations (Confirmed and SGTF*)	Change from previous report	Deaths	Change from previous report
England	668	+261	49	+10

Data provided 27 December 2021 for dates up to 26 December 2021

Notes to table

*SGTF cases in the above table exclude cases confirmed with other variants

Data set and definitions as described in Appendix 2. The data is lagged and requires hospital staff to submit emergency care data sets to NHS Digital for analysis and linkage with testing data.

Proportion of hospitalised cases with confirmed or probable (SGTF+) Omicron who are unvaccinated, by region

Region	% Confirmed Omicron unvaccinated hospitalised	% SGTF* unvaccinated hospitalised	% Total unvaccinated Omicron hospitalised
East Midlands	27.5%	0.0%	24.6%
East of England	13.8%	20.0%	14.7%
London	41.7%	37.5%	41.2%
North East	5.6%	20.0%	8.7%
North West	17.7%	20.0%	18.2%
South East	22.2%	22.2%	22.2%
South West	14.0%	0.0%	13.0%
West Midlands	25.0%	0.0%	18.5%
Yorkshire and Humber	42.9%	16.7%	30.8%
England	27%	20%	26%

(n=656) 12 cases excluded due to unknown vaccination status.

Data provided 27 December 2021 for dates up to 26 December 2021

Notes to table

*SGTF cases in the above table exclude cases confirmed with other variants

Data set and definitions as described in Appendix 2. The data is lagged and requires hospital staff to submit emergency care data sets to NHS Digital for analysis and linkage with testing data.

The % total unvaccinated Omicron hospitalised cases is calculated against the total combined number of confirmed and SGTF cases with known vaccination status that have been hospitalised.

From the above table, 41.2% of hospitalised cases in London were unvaccinated. London is currently the largest and most robust data set of the regions and reflects the importance of vaccine uptake.

Breakdown of England daily cases by region

Region	Confirmed Omicron cases	Change from previous report	SGTF cases*	Change from previous report
East Midlands	14,099	+597	30,014	+1,283
East of England	9,487	+458	37,424	+4,094
London	39,537	+3,401	73,480	+7,713
North East	6,254	+681	11,098	+1,587
North West	18,529	+1,593	63,881	+8,742
South East	36,110	+4,329	35,203	+3,665
South West	15,714	+1,838	14,077	+1,464
West Midlands	10,719	+912	28,594	+3,186
Yorkshire and Humber	8,281	+2,194	36,701	+4,754
Unknown	474	+130	25,242	+1,970
Total	159,204	+16,133	355,714	+38,485

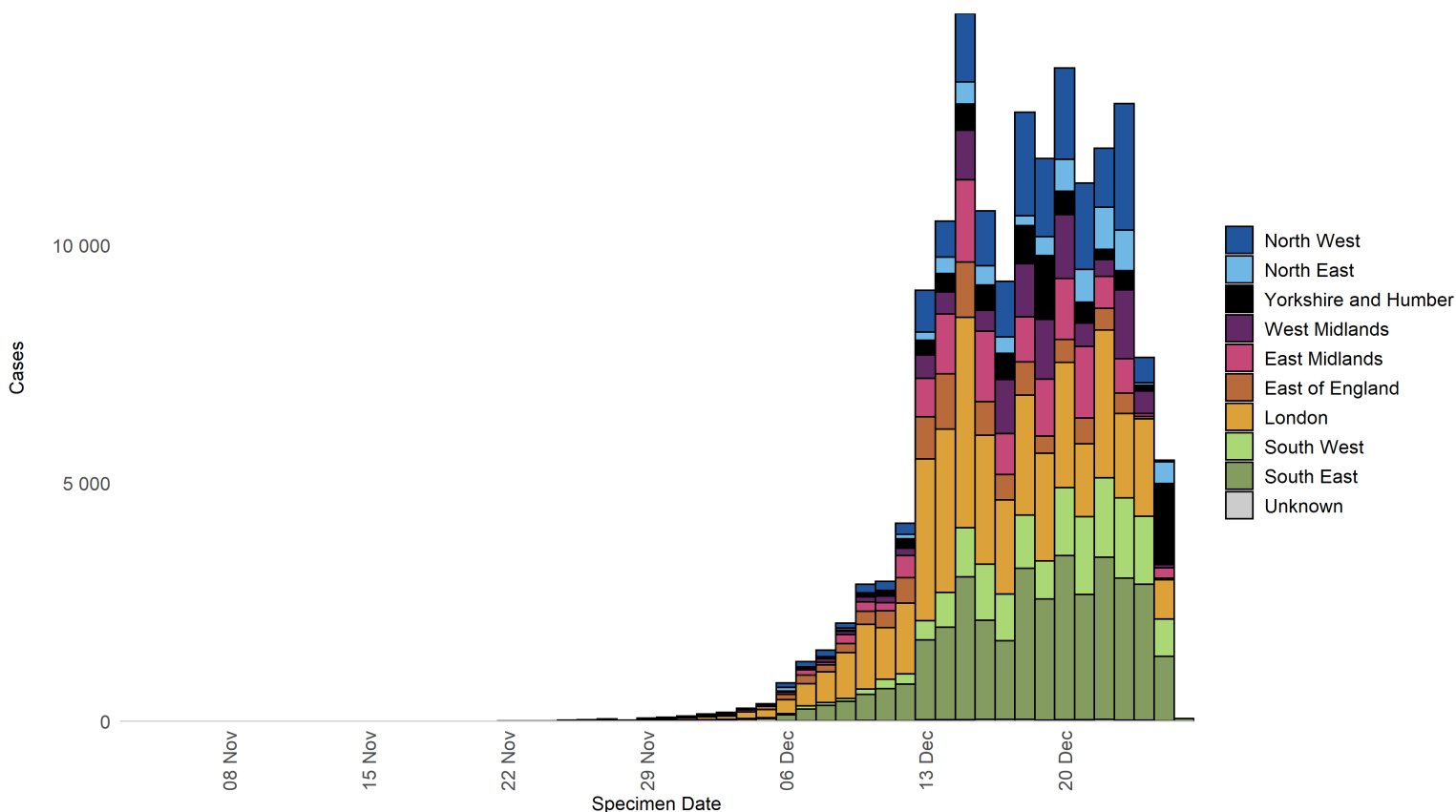
Data up to 6pm 27 December 2021

Notes to table

*SGTF cases in the above table exclude cases confirmed with other variants

Epidemiology curve of confirmed Omicron cases by region

Data as of 27 December 2021



Samples with S-gene target failure (SGTF)

Number and proportion of SARS-CoV-2 cases with SGTF by region, among those with specimen dates on 25 and 26 December 2021.

Region	Total COVID Cases with known S-gene status**	SGTF cases	SGTF %
East Midlands	514	470	91.4
East of England	776	720	93.9
London	216	210	97.2
North East	1,571	1,414	90.0
North West	1,865	1,748	93.7
South East	303	268	88.4
South West	48	46	95.8
West Midlands	193	171	88.6
Yorkshire and Humber	3,334	3,053	91.6
England	8,844	8,132	91.9

SGSS data as of 6pm 27 December 2021.

Notes to tables

** Known S-gene status based on those tested by TaqPath laboratories (Alderley Park, Milton Keynes, Glasgow, and Newcastle Lighthouse Laboratories).

Figure 1. COVID-19 cases with detectable S-gene/SGTF and percentage with SGTF among those tested in TaqPath Labs by day, by region

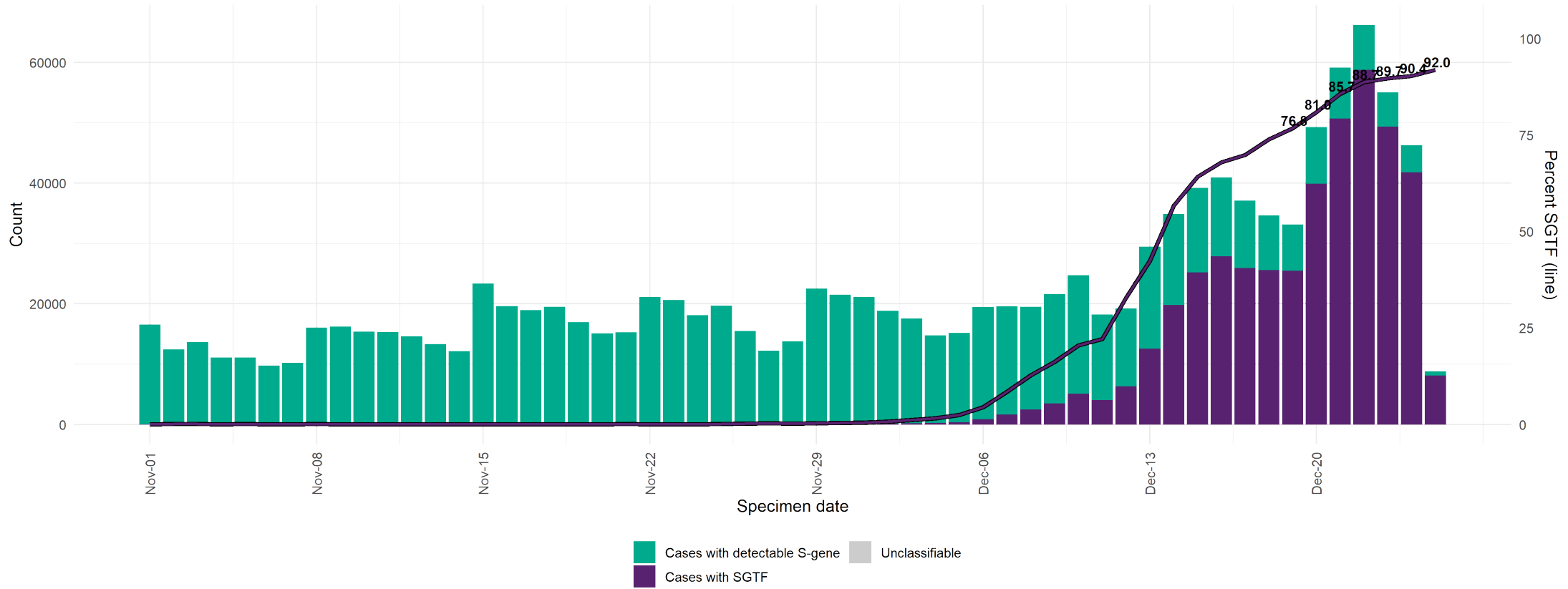
(95% confidence intervals indicated by grey shading).

Data updated 6pm 27 December 2021.



A detectable S gene is a proxy for Delta since April 2021. SGTF was a surveillance proxy for VOC-20DEC-01 however has largely consisted of Delta since August 2021. Local trends in these data may be affected by decisions to direct the processing of samples via a TaqPath laboratory. Only tests carried out with the TaqPath PCR assay and with confirmed SGTF or S gene results included, from Newcastle, Alderley Park, Milton Keynes and Glasgow Lighthouse Labs. SGTF refers to non-detectable S gene and ≤ 30 CT values for N and ORF1ab genes. Detectable S-gene refers to ≤ 30 CT values for S, N, and ORF1ab genes. Produced by Outbreak Surveillance Team, UKHSA.

Figure 2. Number of COVID-19 cases with S-gene positive/SGTF by day, among those tested in TaqPath labs
 (95% confidence intervals indicated by grey shading).
 Data updated 6pm 27 December 2021.



A detectable S gene is a proxy for Delta since April 2021. SGTF was a surveillance proxy for VOC-20DEC-01 however has largely consisted of Delta since August 2021. Local trends in these data may be affected by decisions to direct the processing of samples via a TaqPath laboratory. Only tests carried out with the TaqPath PCR assay and with confirmed SGTF or S gene results included, from Newcastle, Alderley Park, Milton Keynes and Glasgow Lighthouse Labs. SGTF refers to non-detectable S gene and ≤ 30 CT values for N and ORF1ab genes. Detectable S-gene refers to ≤ 30 CT values for S, N, and ORF1ab genes. Produced by Outbreak Surveillance Team, UKHSA.

Appendix 1

Counts are based on case definitions agreed on 13 December 2021
(Implemented on data 6pm 14 December 2021):

- **confirmed case:** Omicron (B.1.1.529) by sequencing or genotyping (i) 417N and 681R failure; ii) 69-70 deletion plus 417N; iii) 69-70 deletion plus 501Y; iv) Q493R, vi) other relevant genotyping results)
- **probable case:** COVID-19 PCR positive and i) SGTF^^ or ii) 69-70 deletion with specimen dates from 1 December**
- **possible case:** COVID-19 PCR positive and SGTF^^ with specimen dates from November 1 up to and including November 30*

^^S-gene target failure (SGTF): A positive SARS-CoV-2 PCR test carried out on the TaqPath assay with undetectable S-gene and CT values ≤ 30 for both N and Orf1ab gene targets. Currently reported into SGSS by Milton Keynes, Alderley Park, Glasgow, and Newcastle lighthouse laboratories.

*Excludes those confirmed as non-Omicron variant.

Appendix 2

Definitions of hospitalisation

Cases with presentation to a type 1 A&E and are admitted or transferred at the end of their emergency care stay, who have a positive SARS-CoV-2 test either:

- within 14 days prior to admission
- within 1 day post admission

Data source: NHS England provides this data from the NHS Digital Emergency Care Data Set (ECDS). This data is subject to delays.