

Dynamic CO-CIN report to SAGE and NERVTAG

Executive summary

Includes patients admitted on or after 01 May 2021

There are 50431 patients included in CO-CIN. Of these, 5542 patient(s) have died and 7973 required ICU. 37775 have been discharged home.

Admission

Figure 1

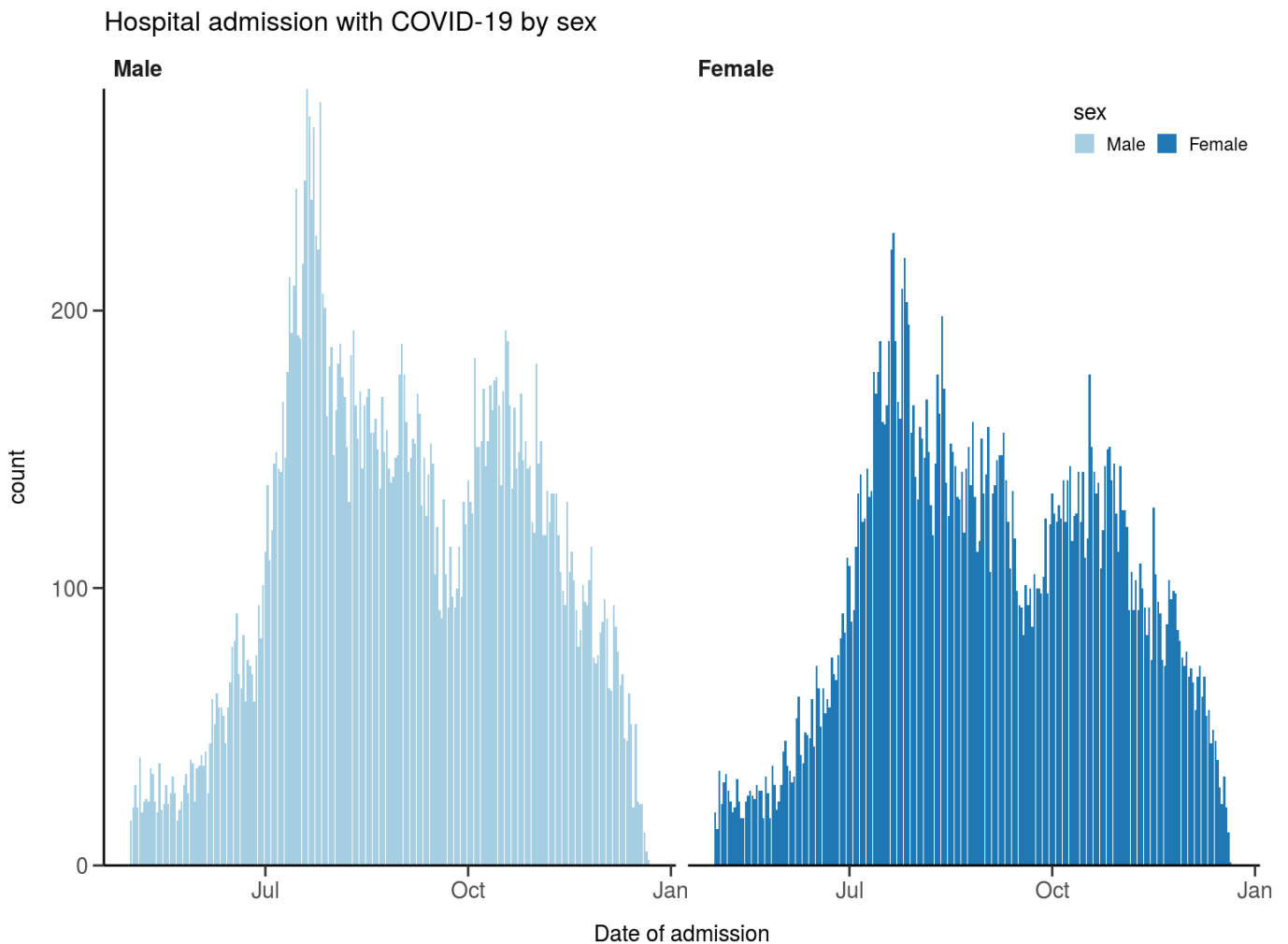
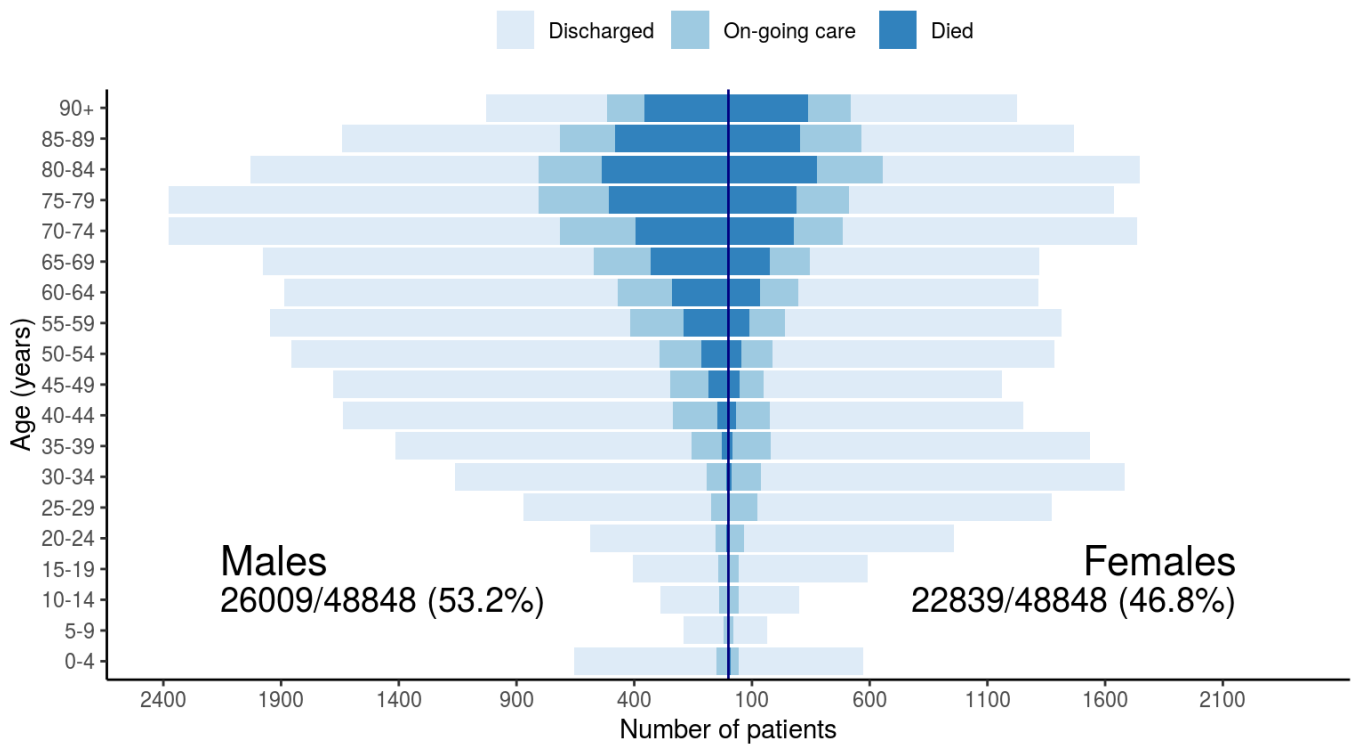


Figure 2

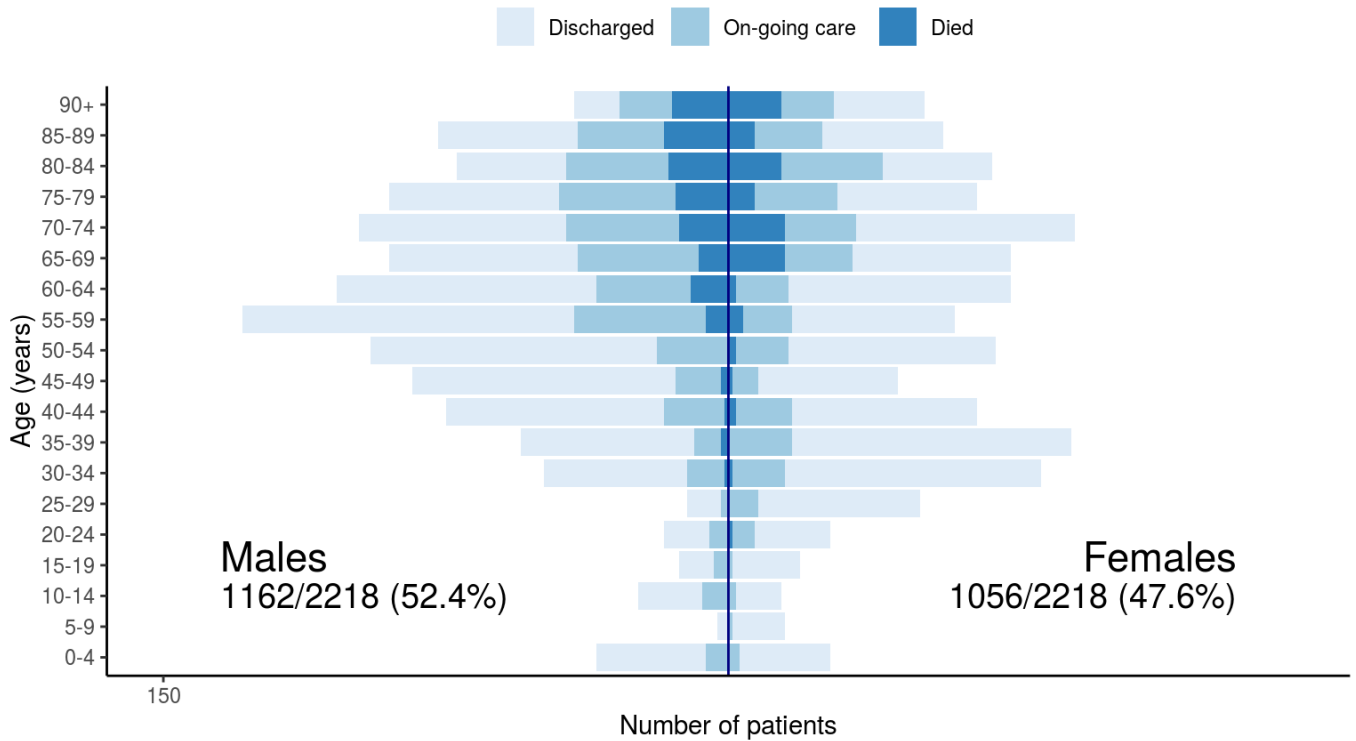
Patients with outcome stratified by age, and sex

All



Patients with outcome stratified by age, and sex

Admitted ≥ 14 days and ≤ 28 days ago

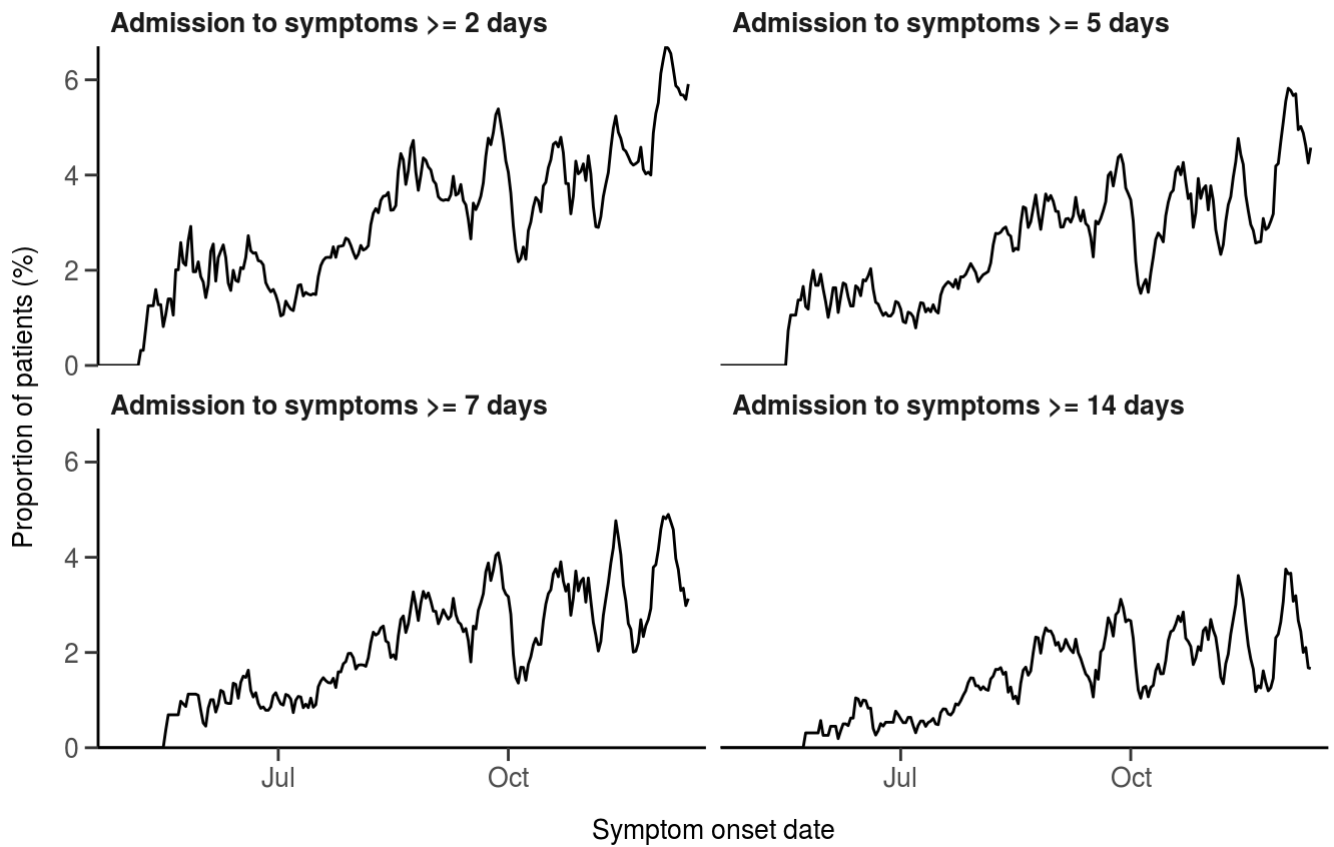


Nosocomial

Figure 3

Proportion with symptom onset occurring after hospital admission

7-day rolling percentage. n = 39769



Patient flow

Figure 4A - All patients

N = 49269

Patient status by day
Cumulative for discharge/death

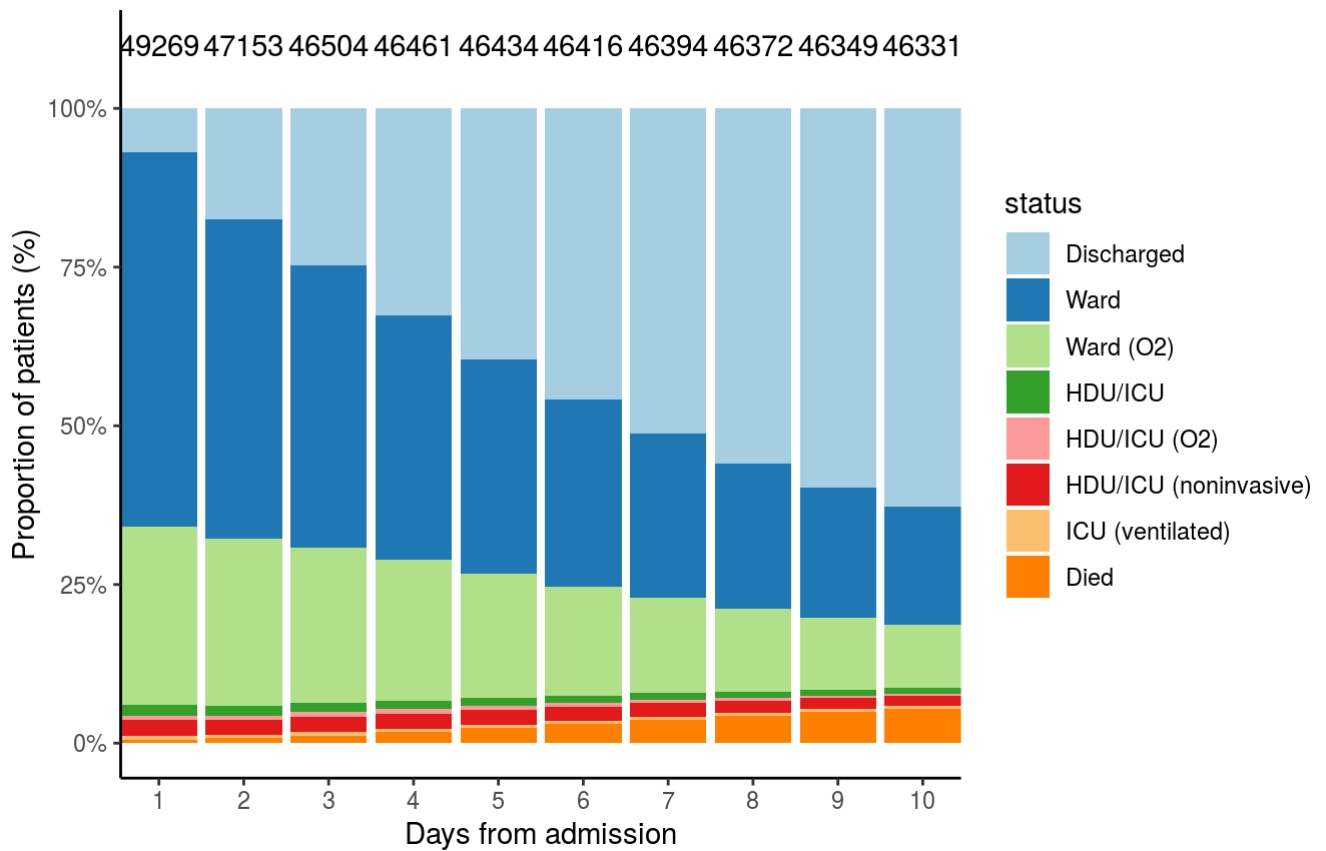
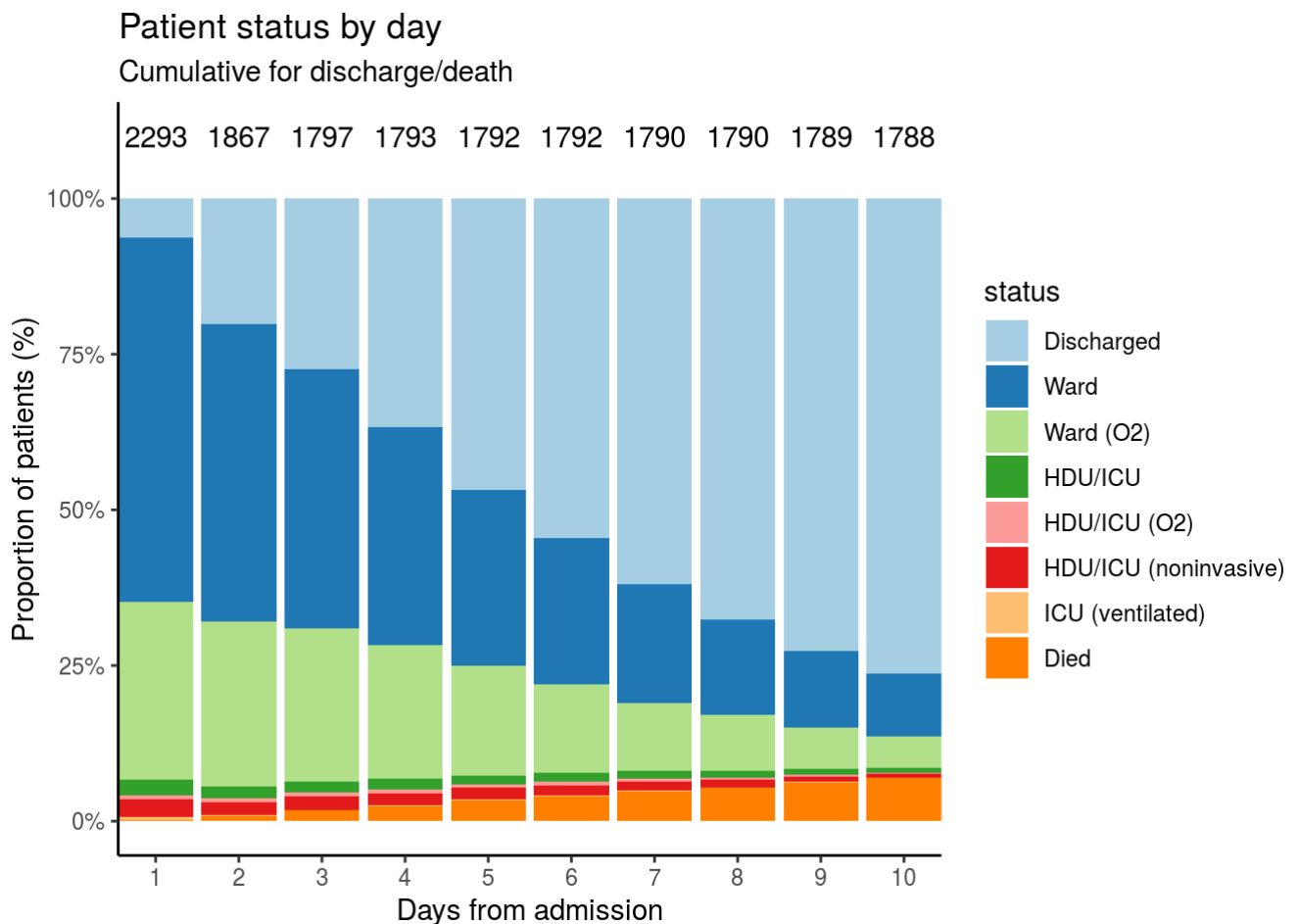


Figure 4B - Patients admitted ≥ 14 days and ≤ 28 days ago

N = 2293



Oxygen requirement

Figure 5A - All patients

N = 47316

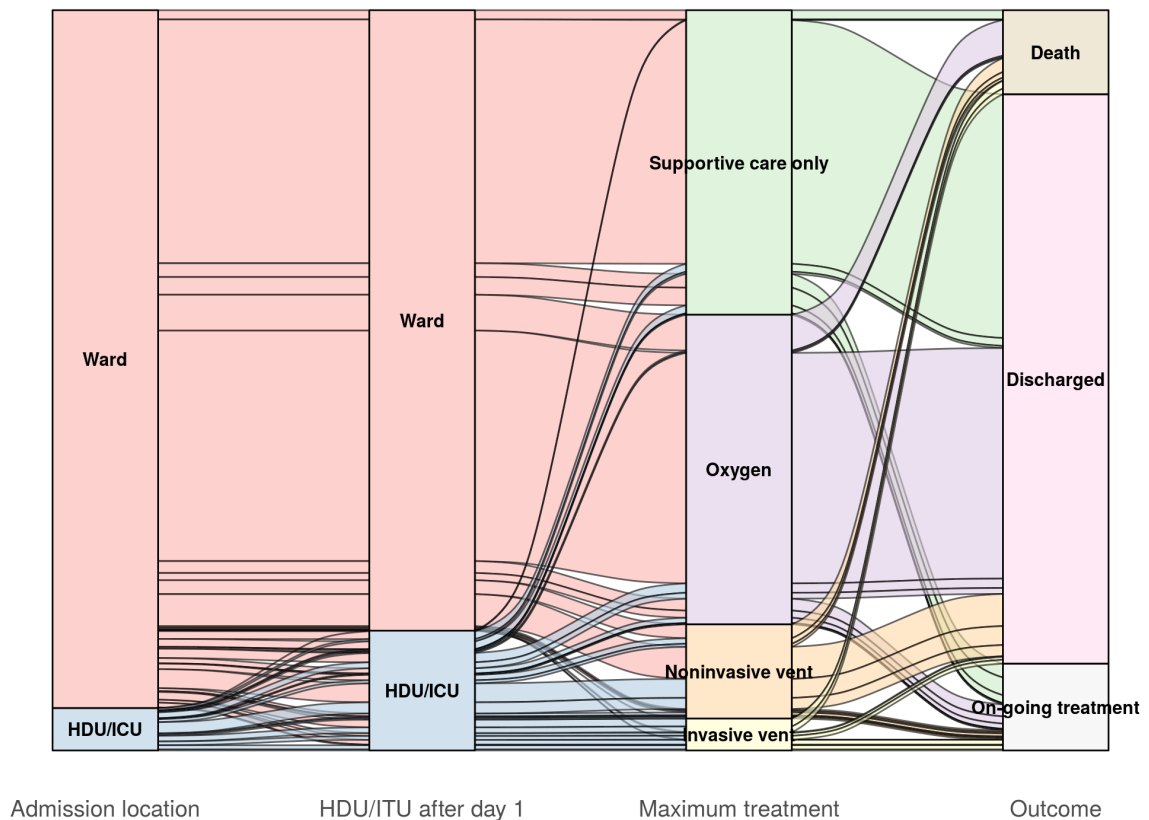


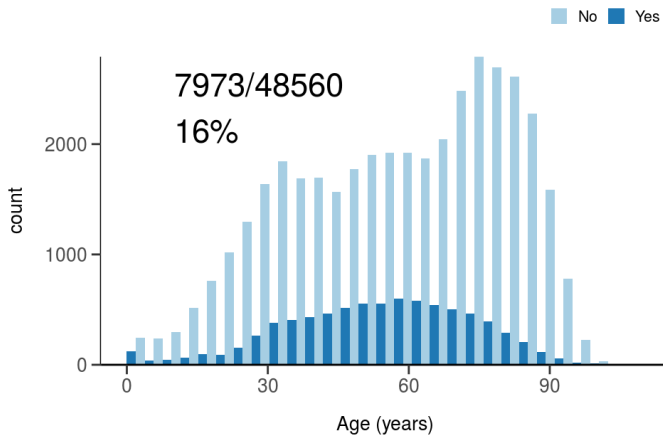
Figure 5B - Patients admitted ≥ 14 days and ≤ 28 days ago

N = 2248

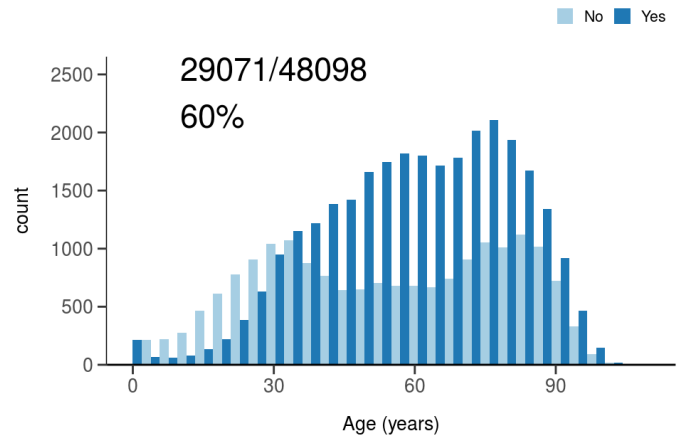
Treatment

Figure 6

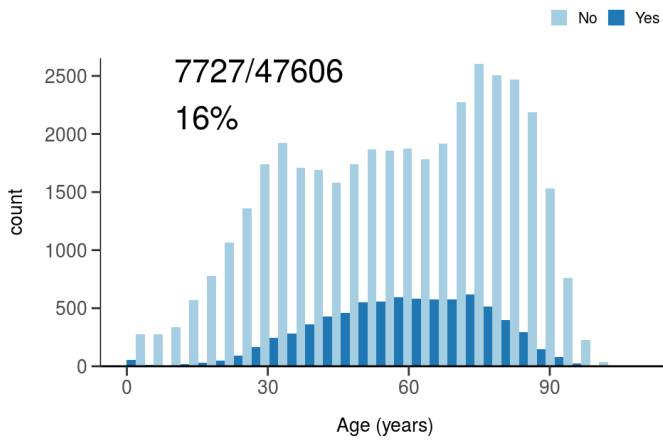
ICU/HDU admission
Figure 10A



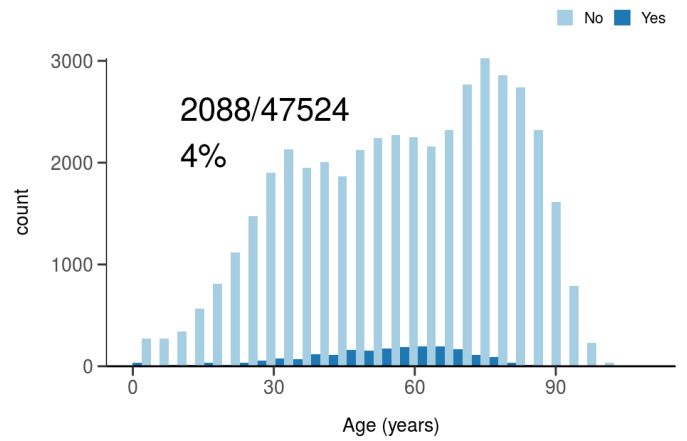
High flow oxygen
Figure 10B



Noninvasive ventilation
Figure 10C



Invasive ventilation
Figure 10D



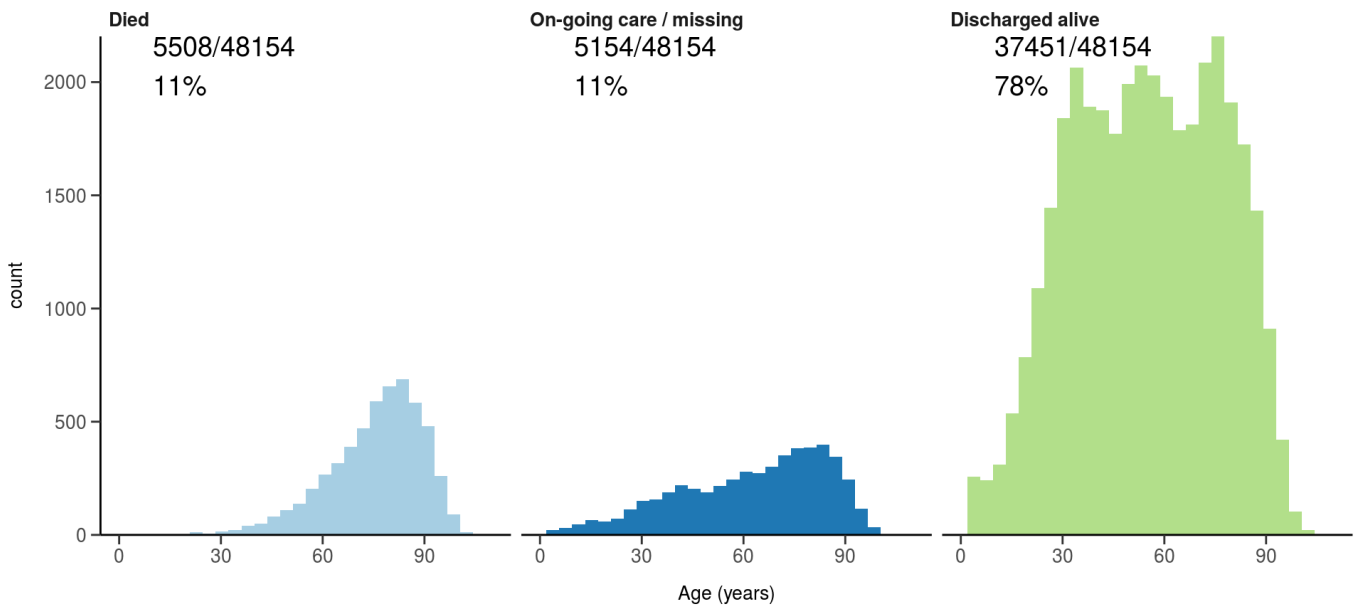
Status in patients admitted ≥ 14 days from today

Figure 7

Where outcome is not reported, on-going care is assumed.

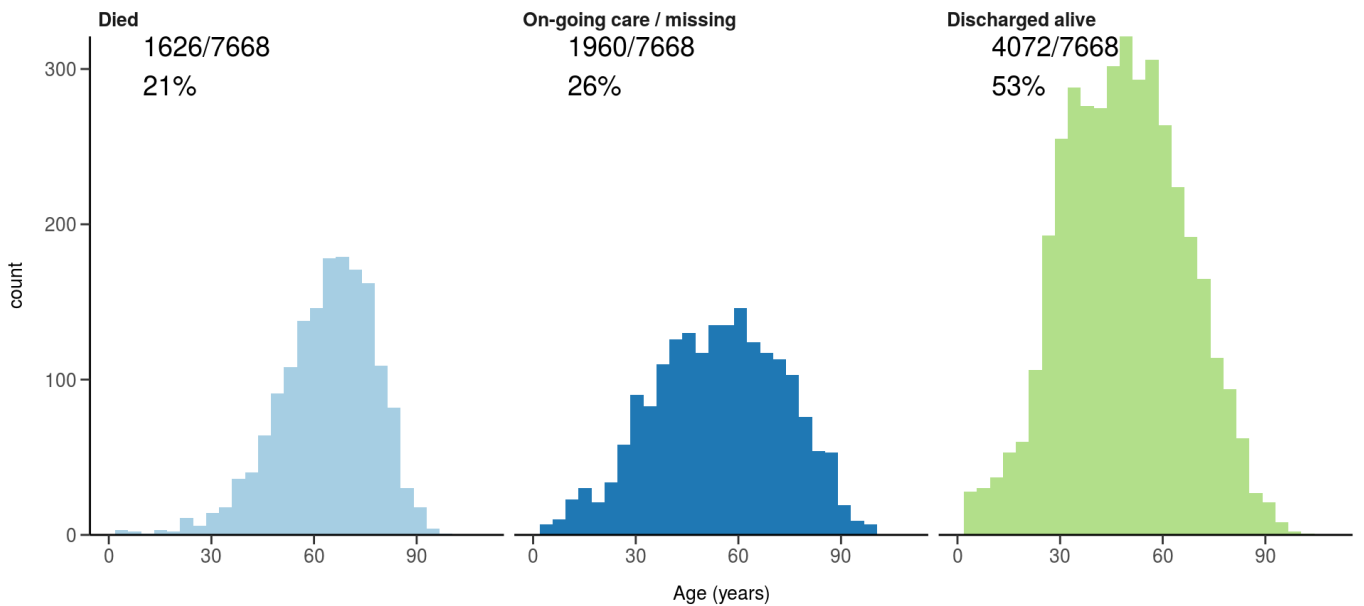
All: status in patients admitted ≥ 14 days ago

Figure 11A



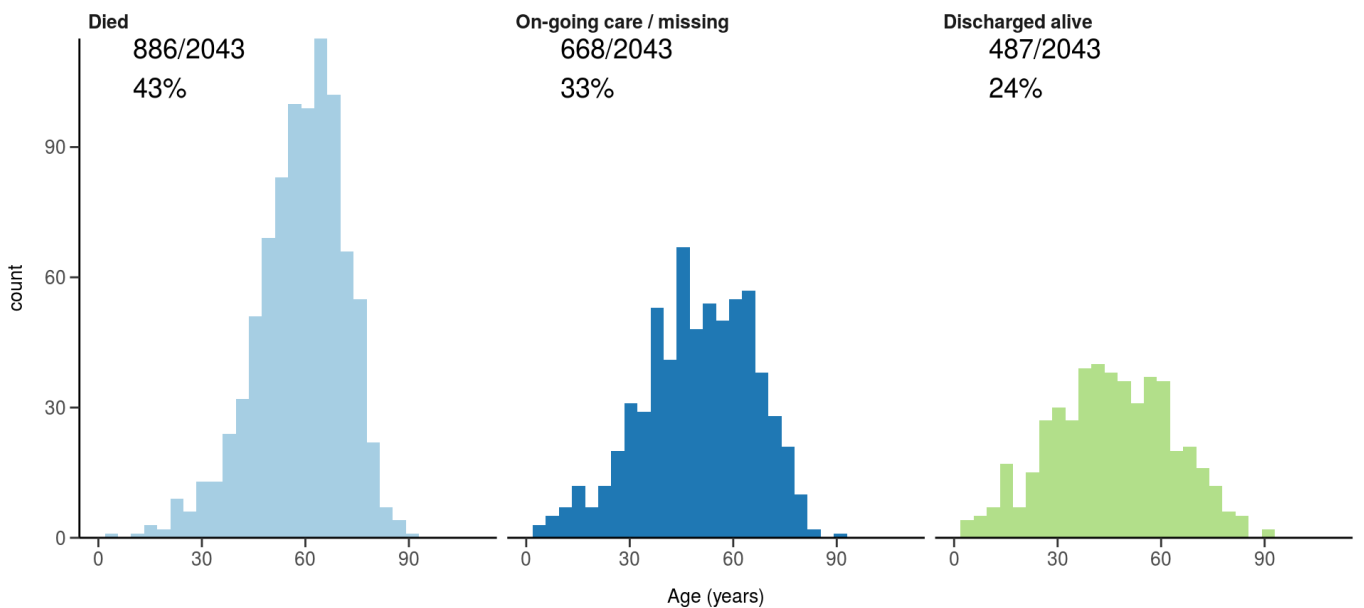
ICU/HDU admissions: status in patients admitted ≥ 14 days ago

Figure 11B



Invasive ventilation: status in patients admitted ≥ 14 days ago

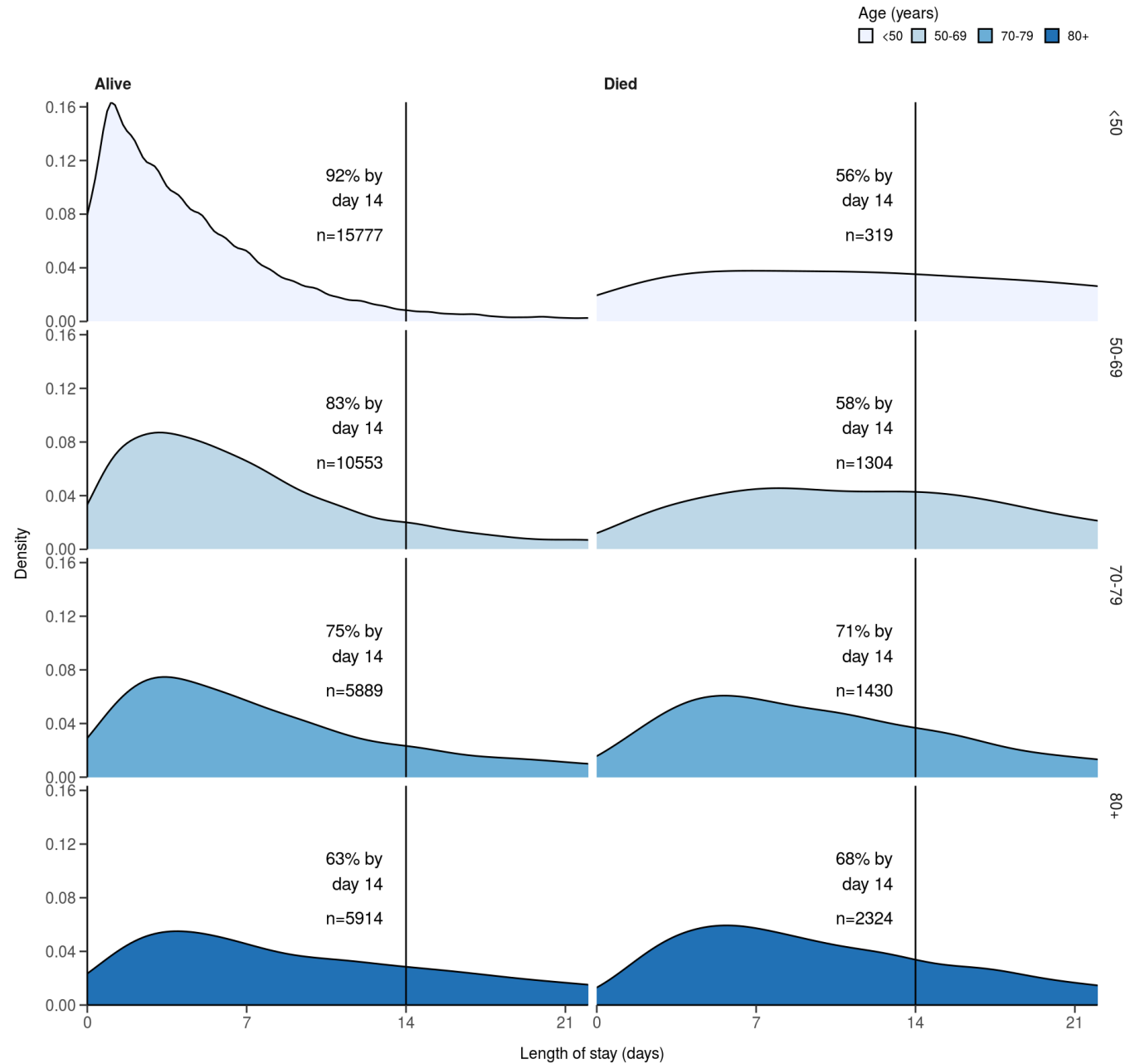
Figure 11c



Length of stay stratified by age

####Figure 8

Length of stay stratified by age and mortality
Proportion who reach outcome by day 14 shown



Data

Table for figure 2A

age.factor	sex	status	n
0-4	Male	Discharged	602
0-4	Male	On-going care	47
0-4	Male	Died	5
0-4	Female	Discharged	529

age.factor	sex	status	n
0-4	Female	On-going care	35
0-4	Female	Died	9
5-9	Male	Discharged	172
5-9	Male	On-going care	20
5-9	Female	Discharged	143
5-9	Female	On-going care	18
5-9	Female	Died	2
10-14	Male	Discharged	248
10-14	Male	On-going care	40
10-14	Female	Discharged	254
10-14	Female	On-going care	42
10-14	Female	Died	3
10-14	NA	Discharged	1
15-19	Male	Discharged	364
15-19	Male	On-going care	42
15-19	Male	Died	1
15-19	Female	Discharged	548
15-19	Female	On-going care	40
15-19	Female	Died	3
15-19	Not specified	On-going care	1
20-24	Male	Discharged	531
20-24	Male	On-going care	47
20-24	Male	Died	8
20-24	Female	Discharged	890
20-24	Female	On-going care	62
20-24	Female	Died	4
20-24	Not specified	On-going care	1
20-24	Not specified	Died	1
25-29	Male	Discharged	796
25-29	Male	On-going care	69
25-29	Male	Died	5
25-29	Female	Discharged	1252

age.factor	sex	status	n
25-29	Female	On-going care	115
25-29	Female	Died	7
25-29	Not specified	Discharged	2
25-29	NA	Discharged	1
30-34	Male	Discharged	1069
30-34	Male	On-going care	83
30-34	Male	Died	11
30-34	Female	Discharged	1545
30-34	Female	On-going care	124
30-34	Female	Died	15
30-34	Not specified	Discharged	3
30-34	NA	Died	1
35-39	Male	Discharged	1258
35-39	Male	On-going care	128
35-39	Male	Died	28
35-39	Female	Discharged	1357
35-39	Female	On-going care	162
35-39	Female	Died	18
35-39	Not specified	Discharged	2
35-39	NA	Discharged	2
40-44	Male	Discharged	1399
40-44	Male	On-going care	190
40-44	Male	Died	47
40-44	Female	Discharged	1077
40-44	Female	On-going care	143
40-44	Female	Died	31
40-44	Not specified	Discharged	5
40-44	NA	Discharged	2
40-44	NA	On-going care	1
45-49	Male	Discharged	1431
45-49	Male	On-going care	166
45-49	Male	Died	83

age.factor	sex	status	n
45-49	Female	Discharged	1011
45-49	Female	On-going care	101
45-49	Female	Died	48
45-49	Not specified	Discharged	1
45-49	Not specified	On-going care	1
45-49	NA	Discharged	1
50-54	Male	Discharged	1564
50-54	Male	On-going care	177
50-54	Male	Died	114
50-54	Female	Discharged	1196
50-54	Female	On-going care	134
50-54	Female	Died	55
50-54	Not specified	Discharged	1
50-54	NA	Discharged	2
55-59	Male	Discharged	1529
55-59	Male	On-going care	228
55-59	Male	Died	191
55-59	Female	Discharged	1176
55-59	Female	On-going care	150
55-59	Female	Died	90
55-59	Not specified	On-going care	1
55-59	Not specified	Died	1
55-59	NA	Discharged	3
60-64	Male	Discharged	1415
60-64	Male	On-going care	230
60-64	Male	Died	241
60-64	Female	Discharged	1021
60-64	Female	On-going care	160
60-64	Female	Died	135
60-64	Not specified	Discharged	1
60-64	Not specified	On-going care	3
60-64	NA	Died	1

age.factor	sex	status	n
65-69	Male	Discharged	1404
65-69	Male	On-going care	243
65-69	Male	Died	330
65-69	Female	Discharged	973
65-69	Female	On-going care	170
65-69	Female	Died	177
65-69	Not specified	Discharged	1
65-69	Not specified	On-going care	2
70-74	Male	Discharged	1661
70-74	Male	On-going care	321
70-74	Male	Died	395
70-74	Female	Discharged	1248
70-74	Female	On-going care	208
70-74	Female	Died	278
70-74	Not specified	Discharged	1
70-74	NA	Discharged	2
70-74	NA	On-going care	1
70-74	NA	Died	1
75-79	Male	Discharged	1570
75-79	Male	On-going care	300
75-79	Male	Died	507
75-79	Female	Discharged	1125
75-79	Female	On-going care	225
75-79	Female	Died	288
75-79	Not specified	Discharged	1
75-79	Not specified	On-going care	1
75-79	Not specified	Died	2
75-79	NA	Discharged	3
80-84	Male	Discharged	1224
80-84	Male	On-going care	268
80-84	Male	Died	537
80-84	Female	Discharged	1094

age.factor	sex	status	n
80-84	Female	On-going care	277
80-84	Female	Died	377
80-84	Not specified	Discharged	2
80-84	Not specified	On-going care	1
80-84	Not specified	Died	1
80-84	NA	Died	1
85-89	Male	Discharged	925
85-89	Male	On-going care	235
85-89	Male	Died	482
85-89	Female	Discharged	903
85-89	Female	On-going care	258
85-89	Female	Died	306
85-89	Not specified	Discharged	1
85-89	Not specified	Died	2
85-89	NA	Discharged	1
90+	Male	Discharged	511
90+	Male	On-going care	161
90+	Male	Died	356
90+	Female	Discharged	709
90+	Female	On-going care	180
90+	Female	Died	338
90+	Not specified	Discharged	1
90+	Not specified	Died	1
90+	NA	On-going care	1

Table for figure 2B

age.factor	sex	status	n
0-4	Male	Discharged	29
0-4	Male	On-going care	6
0-4	Female	Discharged	24
0-4	Female	On-going care	3
5-9	Male	Discharged	3

age.factor	sex	status	n
5-9	Female	Discharged	14
5-9	Female	On-going care	1
10-14	Male	Discharged	17
10-14	Male	On-going care	7
10-14	Female	Discharged	12
10-14	Female	On-going care	2
10-14	NA	Discharged	1
15-19	Male	Discharged	9
15-19	Male	On-going care	4
15-19	Female	Discharged	18
15-19	Female	On-going care	1
20-24	Male	Discharged	12
20-24	Male	On-going care	5
20-24	Female	Discharged	20
20-24	Female	On-going care	6
20-24	Female	Died	1
25-29	Male	Discharged	9
25-29	Male	On-going care	2
25-29	Female	Discharged	43
25-29	Female	On-going care	8
30-34	Male	Discharged	38
30-34	Male	On-going care	10
30-34	Male	Died	1
30-34	Female	Discharged	68
30-34	Female	On-going care	14
30-34	Female	Died	1
35-39	Male	Discharged	46
35-39	Male	On-going care	7
35-39	Male	Died	2
35-39	Female	Discharged	74
35-39	Female	On-going care	17
40-44	Male	Discharged	58

age.factor	sex	status	n
40-44	Male	On-going care	16
40-44	Male	Died	1
40-44	Female	Discharged	49
40-44	Female	On-going care	15
40-44	Female	Died	2
40-44	Not specified	Discharged	1
45-49	Male	Discharged	70
45-49	Male	On-going care	12
45-49	Male	Died	2
45-49	Female	Discharged	37
45-49	Female	On-going care	7
45-49	Female	Died	1
45-49	NA	Discharged	1
50-54	Male	Discharged	76
50-54	Male	On-going care	19
50-54	Female	Discharged	55
50-54	Female	On-going care	14
50-54	Female	Died	2
55-59	Male	Discharged	88
55-59	Male	On-going care	35
55-59	Male	Died	6
55-59	Female	Discharged	43
55-59	Female	On-going care	13
55-59	Female	Died	4
55-59	Not specified	On-going care	1
55-59	NA	Discharged	1
60-64	Male	Discharged	69
60-64	Male	On-going care	25
60-64	Male	Died	10
60-64	Female	Discharged	59
60-64	Female	On-going care	14
60-64	Female	Died	2

age.factor	sex	status	n
60-64	Not specified	Discharged	1
60-64	Not specified	On-going care	1
65-69	Male	Discharged	50
65-69	Male	On-going care	32
65-69	Male	Died	8
65-69	Female	Discharged	42
65-69	Female	On-going care	18
65-69	Female	Died	15
65-69	Not specified	On-going care	1
70-74	Male	Discharged	55
70-74	Male	On-going care	30
70-74	Male	Died	13
70-74	Female	Discharged	58
70-74	Female	On-going care	19
70-74	Female	Died	15
70-74	NA	Died	1
75-79	Male	Discharged	45
75-79	Male	On-going care	31
75-79	Male	Died	14
75-79	Female	Discharged	37
75-79	Female	On-going care	22
75-79	Female	Died	7
75-79	Not specified	On-going care	1
80-84	Male	Discharged	29
80-84	Male	On-going care	27
80-84	Male	Died	16
80-84	Female	Discharged	29
80-84	Female	On-going care	27
80-84	Female	Died	14
85-89	Male	Discharged	37
85-89	Male	On-going care	23
85-89	Male	Died	17

age.factor	sex	status	n
85-89	Female	Discharged	32
85-89	Female	On-going care	18
85-89	Female	Died	7
90+	Male	Discharged	12
90+	Male	On-going care	14
90+	Male	Died	15
90+	Female	Discharged	24
90+	Female	On-going care	14
90+	Female	Died	14

Table for figure 4A

day	status	n
-2	Discharged	1
-1	Discharged	1
1	Discharged	3439
1	Ward	29034
1	Ward (O2)	13801
1	HDU/ICU	880
1	HDU/ICU (O2)	322
1	HDU/ICU (noninvasive)	1228
1	ICU (ventilated)	341
1	Died	224
2	Discharged	8253
2	Ward	23724
2	Ward (O2)	12399
2	HDU/ICU	727
2	HDU/ICU (O2)	299
2	HDU/ICU (noninvasive)	1112
2	ICU (ventilated)	263
2	Died	376
3	Discharged	11498
3	Ward	20655

day	status	n
3	Ward (O2)	11402
3	HDU/ICU	683
3	HDU/ICU (O2)	320
3	HDU/ICU (noninvasive)	1136
3	ICU (ventilated)	263
3	Died	547
4	Discharged	15145
4	Ward	17866
4	Ward (O2)	10323
4	HDU/ICU	640
4	HDU/ICU (O2)	306
4	HDU/ICU (noninvasive)	1112
4	ICU (ventilated)	251
4	Died	818
5	Discharged	18374
5	Ward	15625
5	Ward (O2)	9116
5	HDU/ICU	604
5	HDU/ICU (O2)	289
5	HDU/ICU (noninvasive)	1078
5	ICU (ventilated)	246
5	Died	1102
6	Discharged	21255
6	Ward	13721
6	Ward (O2)	7948
6	HDU/ICU	558
6	HDU/ICU (O2)	272
6	HDU/ICU (noninvasive)	1037
6	ICU (ventilated)	234
6	Died	1391
7	Discharged	23746
7	Ward	12035

day	status	n
7	Ward (O2)	6938
7	HDU/ICU	513
7	HDU/ICU (O2)	246
7	HDU/ICU (noninvasive)	980
7	ICU (ventilated)	223
7	Died	1713
8	Discharged	25918
8	Ward	10657
8	Ward (O2)	6014
8	HDU/ICU	458
8	HDU/ICU (O2)	216
8	HDU/ICU (noninvasive)	894
8	ICU (ventilated)	220
8	Died	1995
9	Discharged	27668
9	Ward	9544
9	Ward (O2)	5240
9	HDU/ICU	417
9	HDU/ICU (O2)	190
9	HDU/ICU (noninvasive)	812
9	ICU (ventilated)	211
9	Died	2267
10	Discharged	29081
10	Ward	8632
10	Ward (O2)	4597
10	HDU/ICU	386
10	HDU/ICU (O2)	168
10	HDU/ICU (noninvasive)	740
10	ICU (ventilated)	205
10	Died	2522

Table for figure 4B

day	status	n
-2	Discharged	1
-1	Discharged	1
1	Discharged	145
1	Ward	1342
1	Ward (O2)	652
1	HDU/ICU	59
1	HDU/ICU (O2)	15
1	HDU/ICU (noninvasive)	64
1	ICU (ventilated)	13
1	Died	3
2	Discharged	376
2	Ward	892
2	Ward (O2)	496
2	HDU/ICU	34
2	HDU/ICU (O2)	11
2	HDU/ICU (noninvasive)	39
2	ICU (ventilated)	3
2	Died	16
3	Discharged	493
3	Ward	749
3	Ward (O2)	440
3	HDU/ICU	32
3	HDU/ICU (O2)	12
3	HDU/ICU (noninvasive)	38
3	ICU (ventilated)	2
3	Died	31
4	Discharged	658
4	Ward	628
4	Ward (O2)	385
4	HDU/ICU	31
4	HDU/ICU (O2)	10
4	HDU/ICU (noninvasive)	36

day	status	n
4	ICU (ventilated)	2
4	Died	43
5	Discharged	840
5	Ward	504
5	Ward (O2)	316
5	HDU/ICU	27
5	HDU/ICU (O2)	9
5	HDU/ICU (noninvasive)	34
5	ICU (ventilated)	2
5	Died	60
6	Discharged	977
6	Ward	420
6	Ward (O2)	256
6	HDU/ICU	26
6	HDU/ICU (O2)	9
6	HDU/ICU (noninvasive)	31
6	ICU (ventilated)	2
6	Died	71
7	Discharged	1108
7	Ward	342
7	Ward (O2)	195
7	HDU/ICU	22
7	HDU/ICU (O2)	8
7	HDU/ICU (noninvasive)	27
7	ICU (ventilated)	2
7	Died	86
8	Discharged	1210
8	Ward	274
8	Ward (O2)	161
8	HDU/ICU	20
8	HDU/ICU (O2)	6
8	HDU/ICU (noninvasive)	21

day	status	n
8	ICU (ventilated)	2
8	Died	96
9	Discharged	1299
9	Ward	222
9	Ward (O2)	118
9	HDU/ICU	17
9	HDU/ICU (O2)	5
9	HDU/ICU (noninvasive)	15
9	ICU (ventilated)	1
9	Died	112
10	Discharged	1365
10	Ward	179
10	Ward (O2)	90
10	HDU/ICU	15
10	HDU/ICU (O2)	4
10	HDU/ICU (noninvasive)	10
10	ICU (ventilated)	1
10	Died	124