

Dynamic CO-CIN report to SAGE and NERVTAG

Executive summary

Includes patients admitted on or after 01 December 2021

There are 1758 patients included in CO-CIN. Of these, 81 patient(s) have died and 376 required ICU. 749 have been discharged home.

Admission

Figure 1

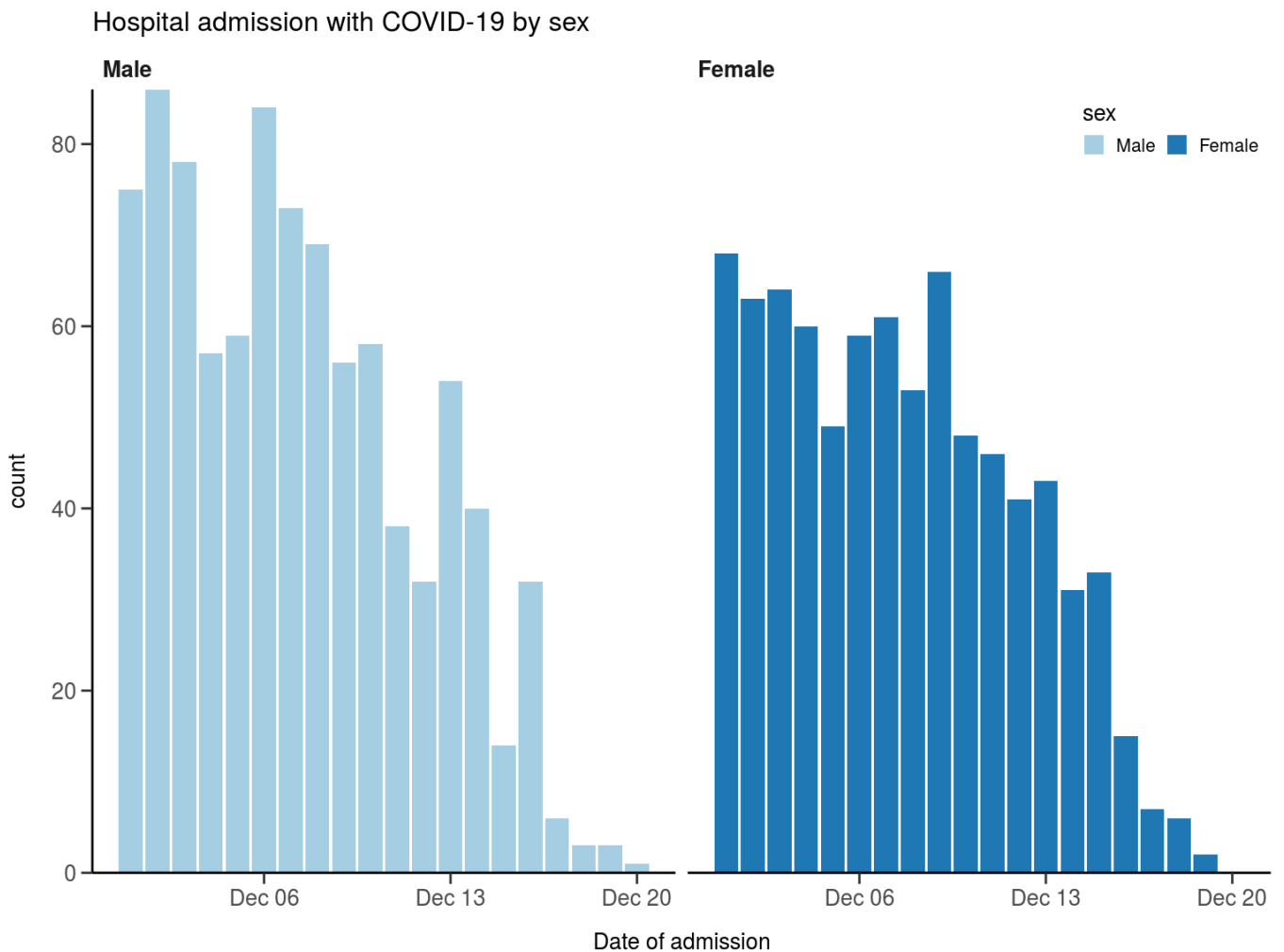
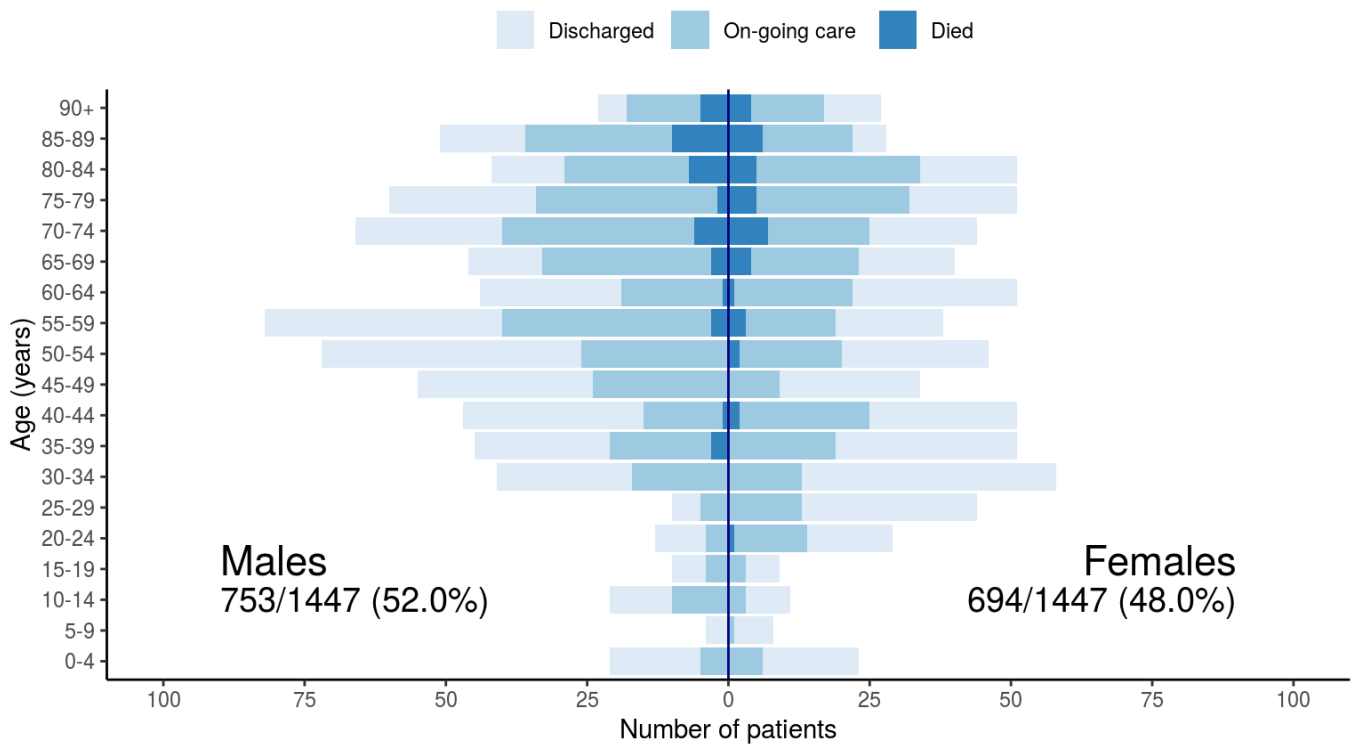


Figure 2

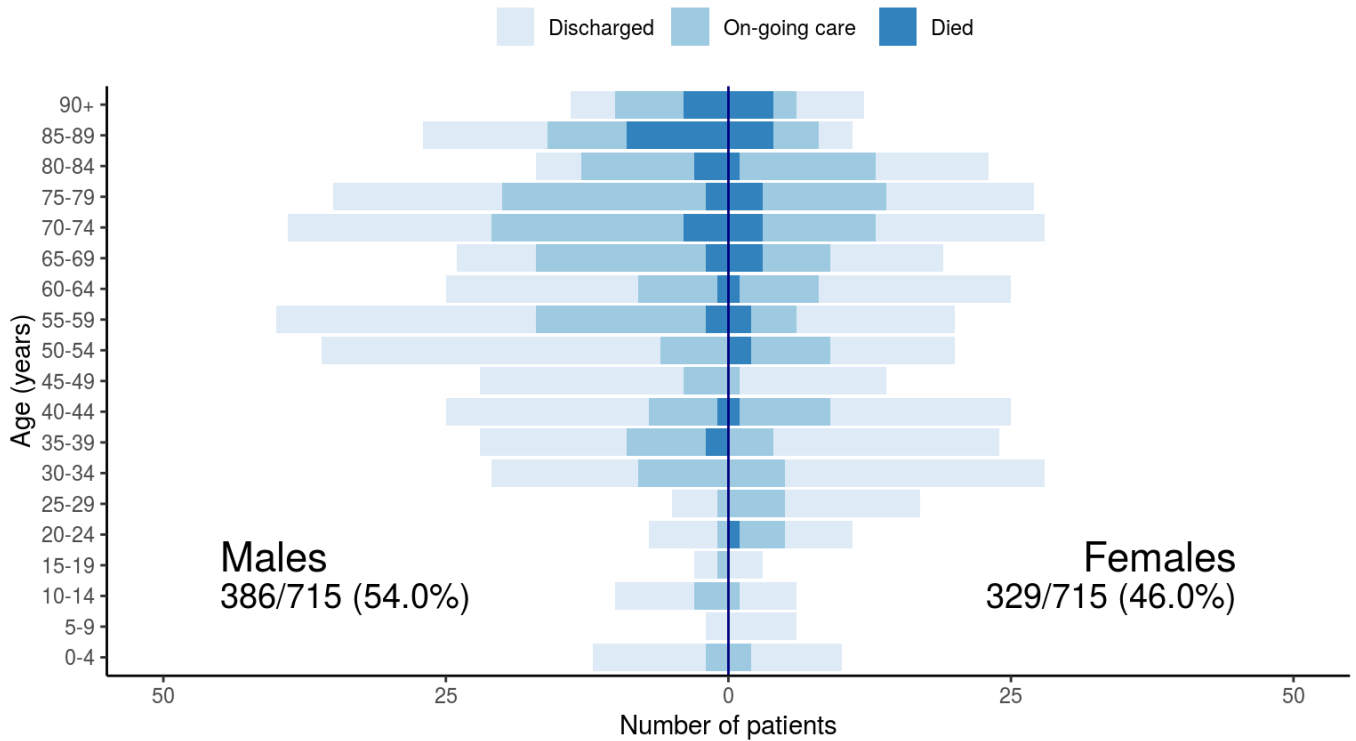
Patients with outcome stratified by age, and sex

All



Patients with outcome stratified by age, and sex

Admitted ≥ 14 days and ≤ 28 days ago

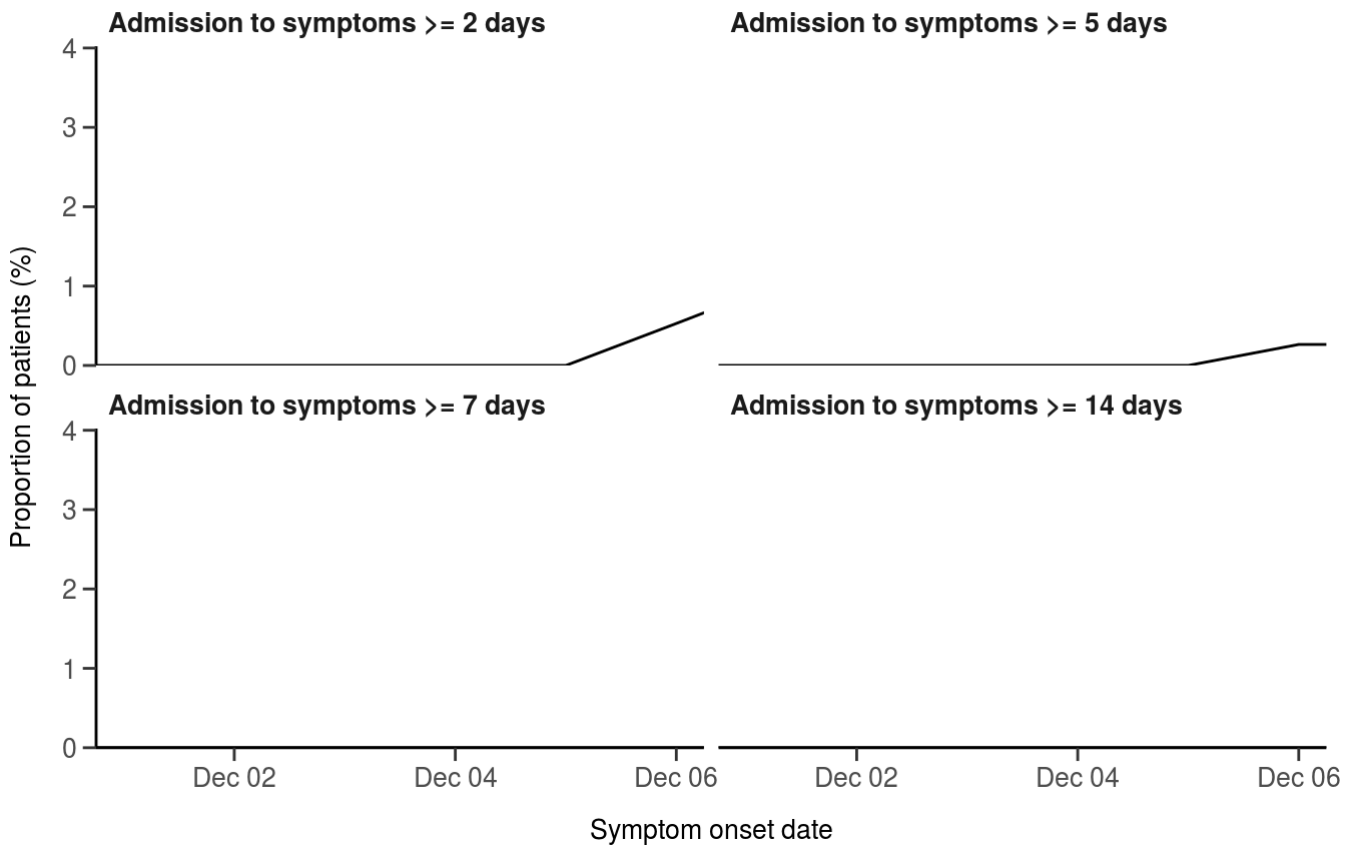


Nosocomial

Figure 3

Proportion with symptom onset occurring after hospital admission

7-day rolling percentage. n = 1228



Patient flow

Figure 4A - All patients

N = 1541

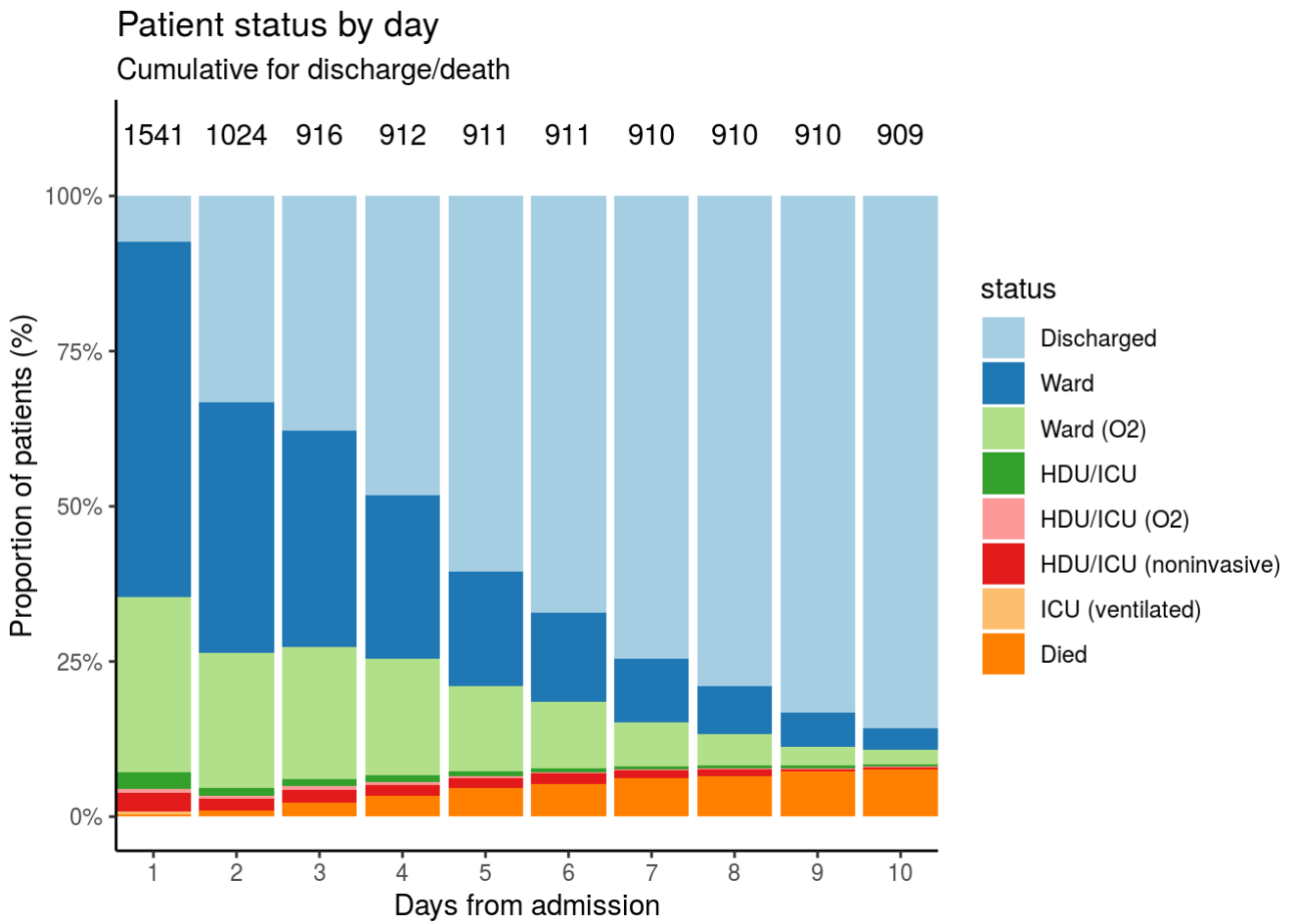
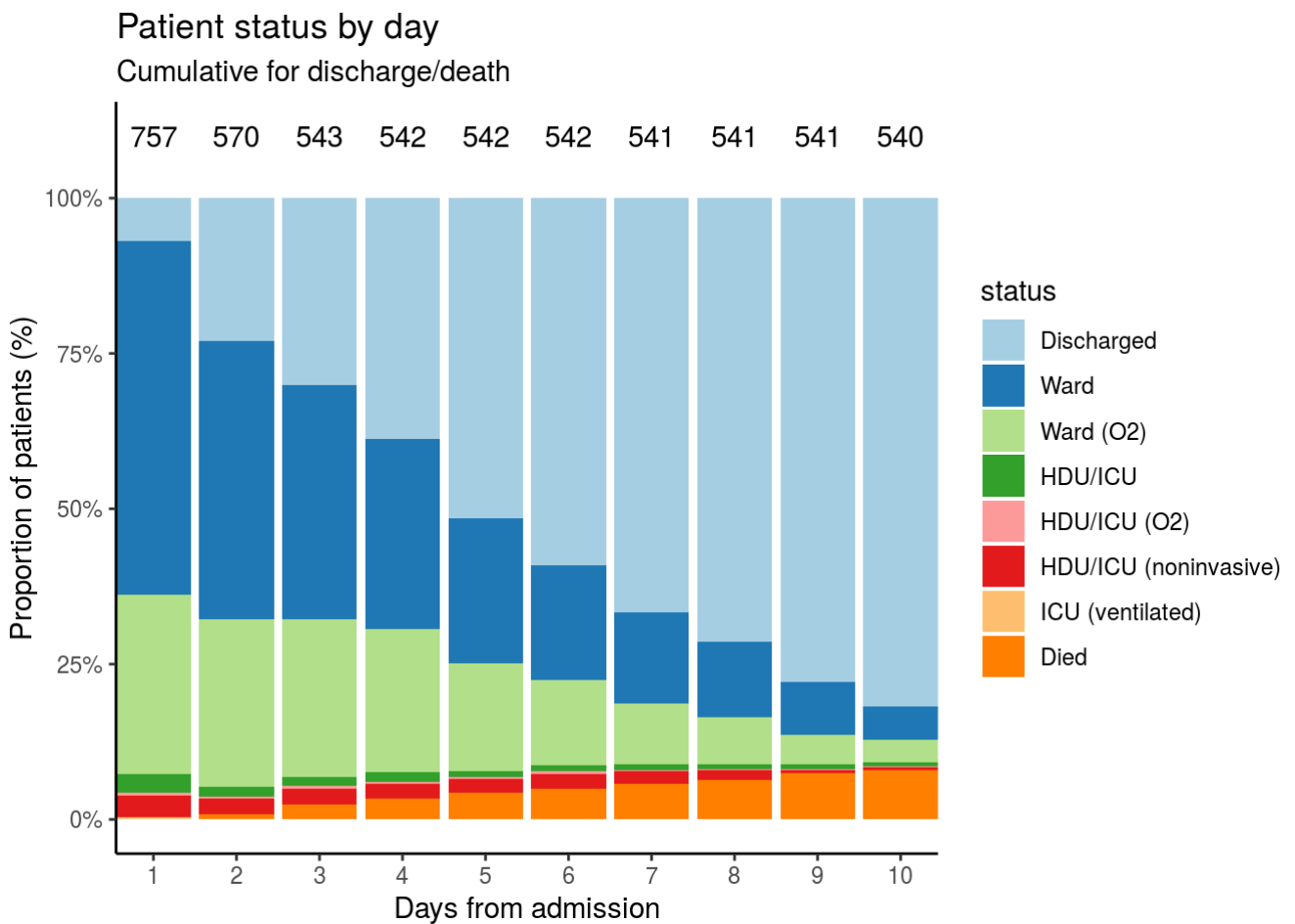


Figure 4B - Patients admitted ≥ 14 days and ≤ 28 days ago

N = 757



Oxygen requirement

Figure 5A - All patients

N = 1496

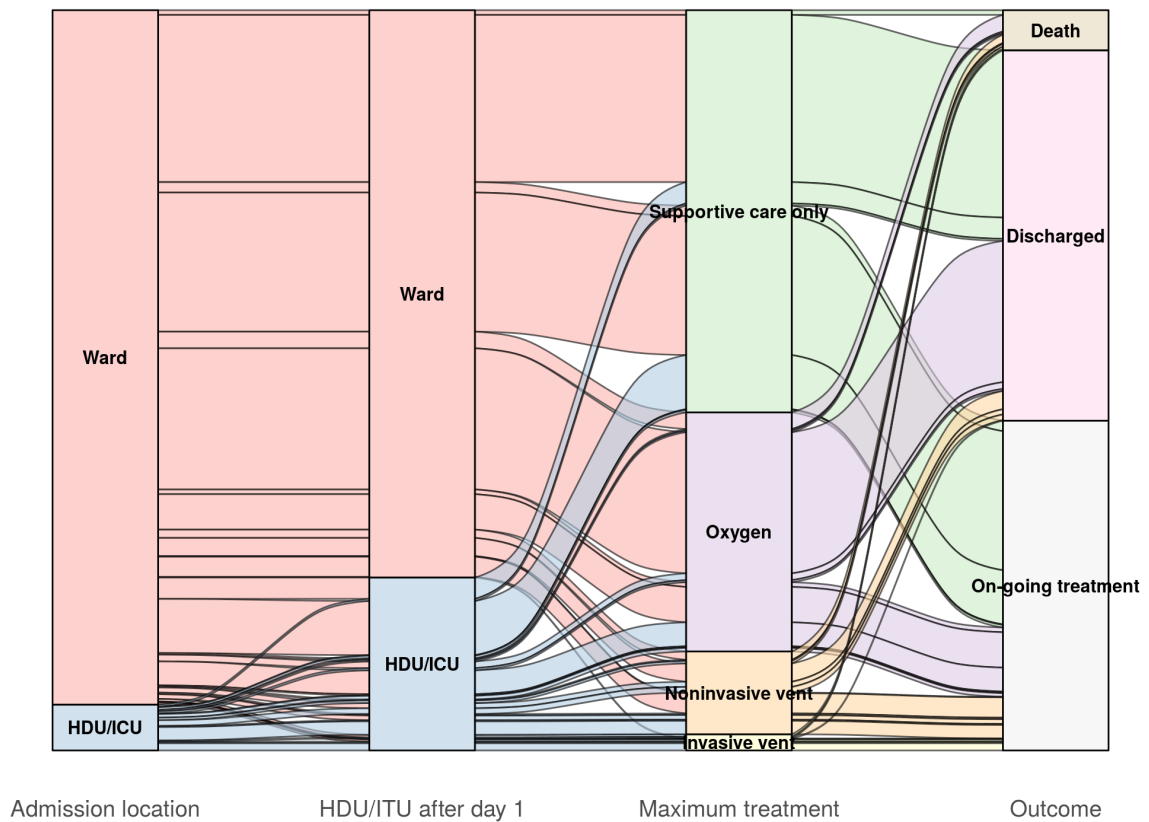


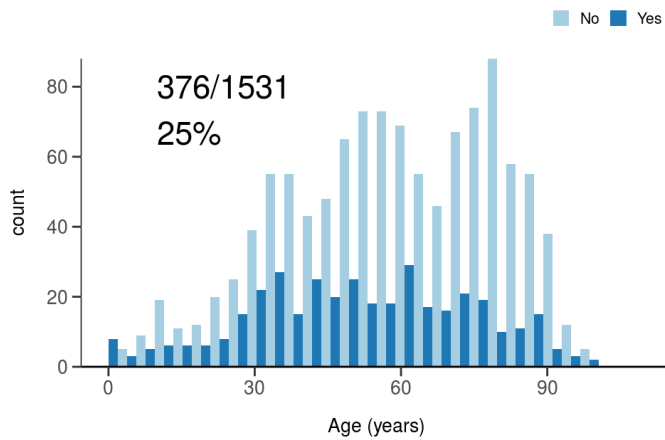
Figure 5B - Patients admitted ≥ 14 days and ≤ 28 days ago

N = 744

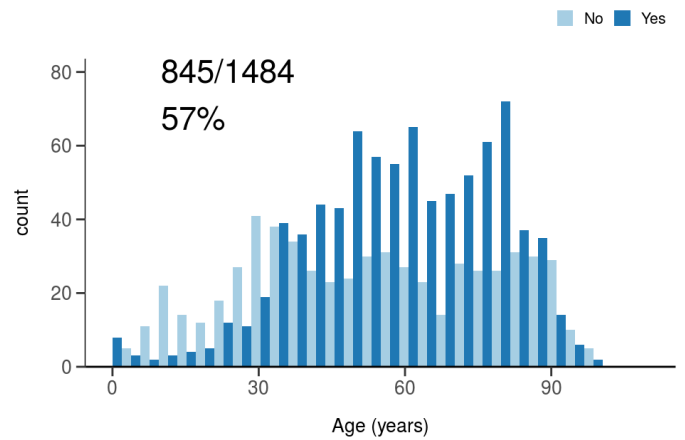
Treatment

Figure 6

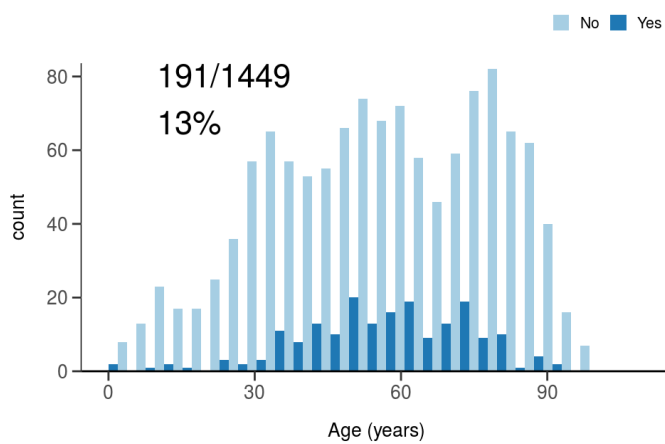
ICU/HDU admission
Figure 10A



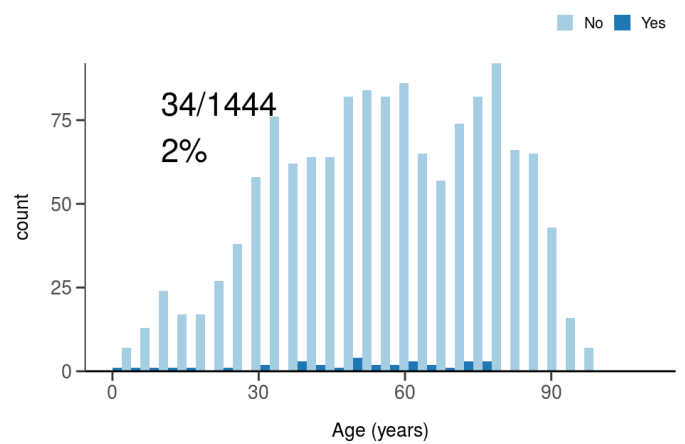
High flow oxygen
Figure 10B



Noninvasive ventilation
Figure 10C



Invasive ventilation
Figure 10D



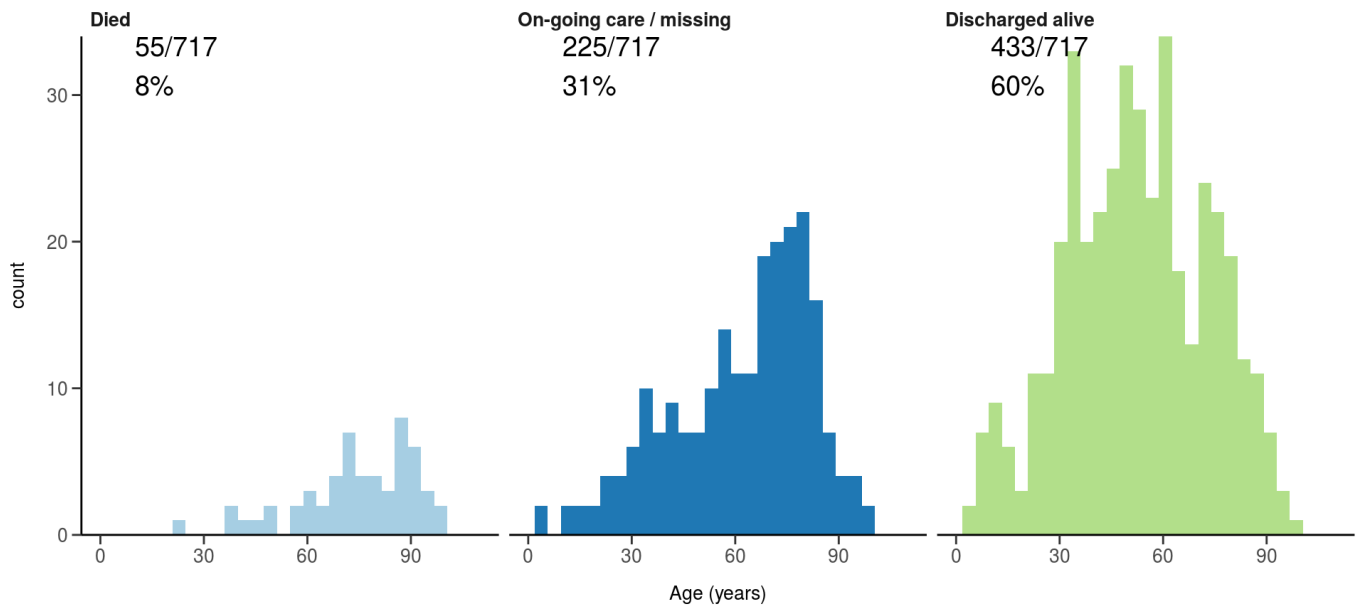
Status in patients admitted ≥ 14 days from today

Figure 7

Where outcome is not reported, on-going care is assumed.

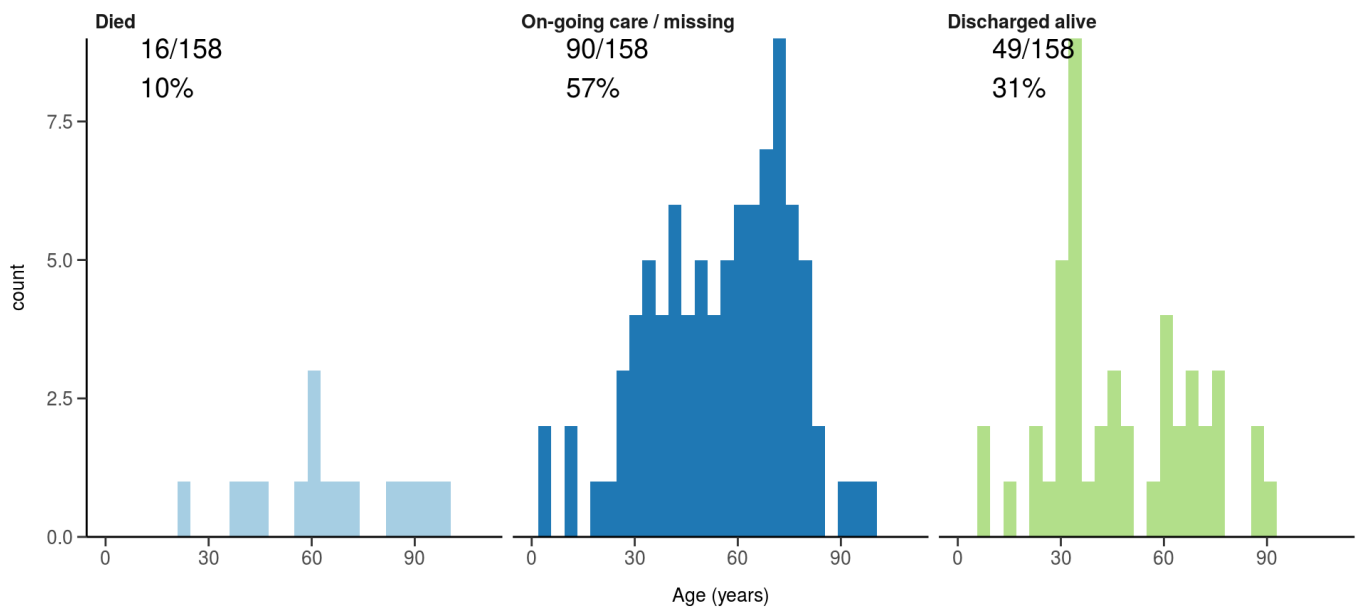
All: status in patients admitted ≥ 14 days ago

Figure 11A



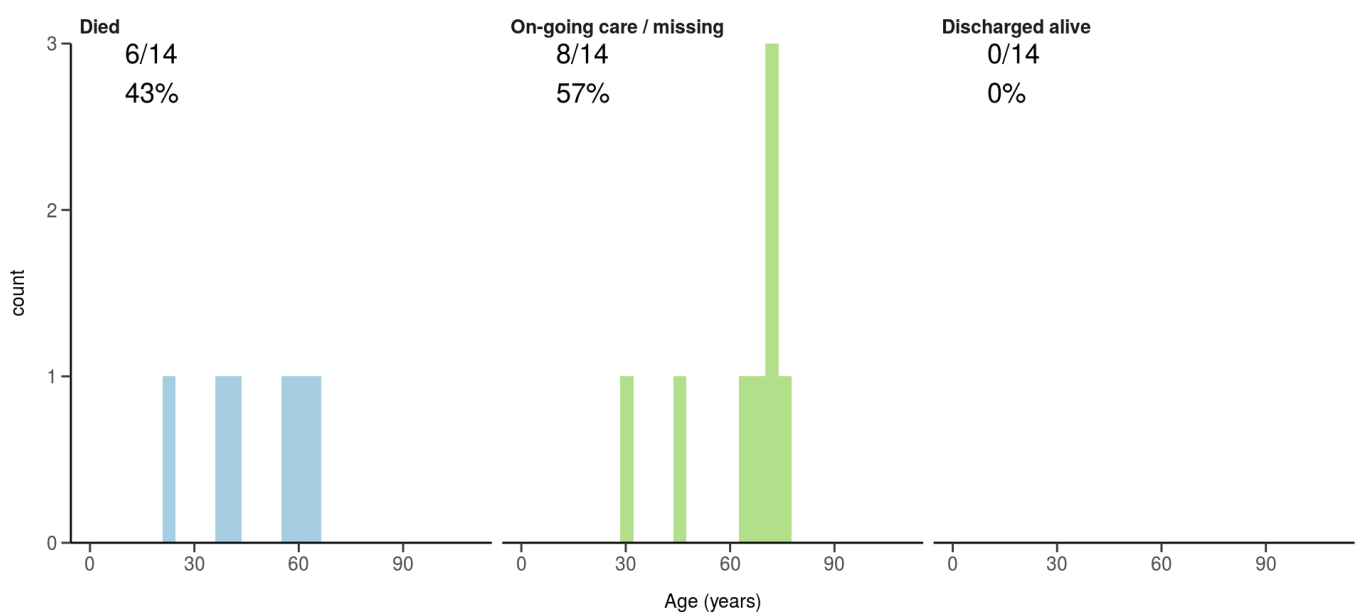
ICU/HDU admissions: status in patients admitted ≥ 14 days ago

Figure 11B



Invasive ventilation: status in patients admitted ≥ 14 days ago

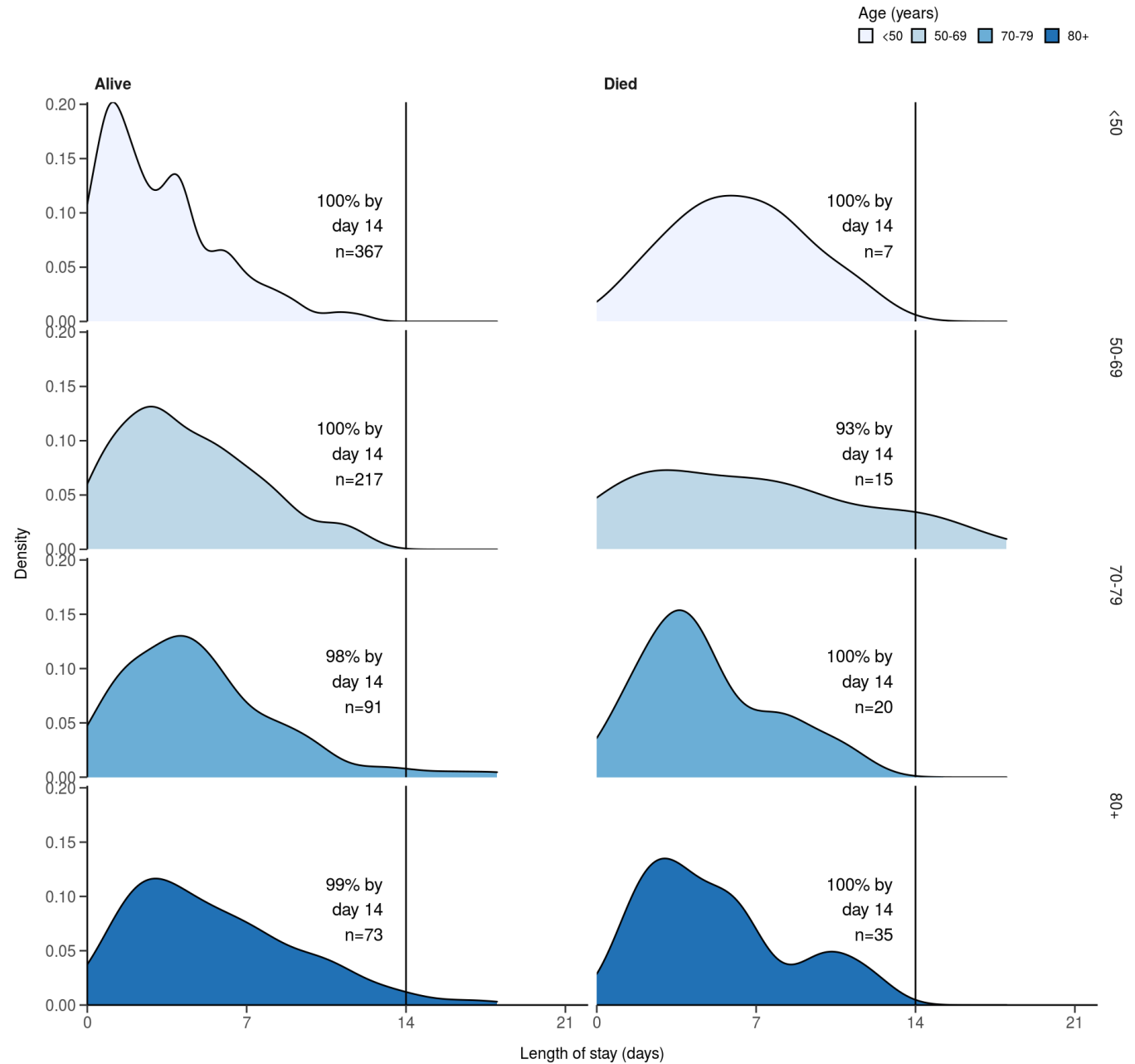
Figure 11c



Length of stay stratified by age

####Figure 8

Length of stay stratified by age and mortality
 Proportion who reach outcome by day 14 shown



Data

Table for figure 2A

age.factor	sex	status	n
0-4	Male	Discharged	16
0-4	Male	On-going care	5
0-4	Female	Discharged	17
0-4	Female	On-going care	6

age.factor	sex	status	n
5-9	Male	Discharged	4
5-9	Female	Discharged	7
5-9	Female	On-going care	1
10-14	Male	Discharged	11
10-14	Male	On-going care	10
10-14	Female	Discharged	8
10-14	Female	On-going care	3
10-14	NA	Discharged	1
15-19	Male	Discharged	6
15-19	Male	On-going care	4
15-19	Female	Discharged	6
15-19	Female	On-going care	3
20-24	Male	Discharged	9
20-24	Male	On-going care	4
20-24	Female	Discharged	15
20-24	Female	On-going care	13
20-24	Female	Died	1
25-29	Male	Discharged	5
25-29	Male	On-going care	5
25-29	Female	Discharged	31
25-29	Female	On-going care	13
30-34	Male	Discharged	24
30-34	Male	On-going care	17
30-34	Female	Discharged	45
30-34	Female	On-going care	13
35-39	Male	Discharged	24
35-39	Male	On-going care	18
35-39	Male	Died	3
35-39	Female	Discharged	32
35-39	Female	On-going care	19
40-44	Male	Discharged	32
40-44	Male	On-going care	14

age.factor	sex	status	n
40-44	Male	Died	1
40-44	Female	Discharged	26
40-44	Female	On-going care	23
40-44	Female	Died	2
45-49	Male	Discharged	31
45-49	Male	On-going care	24
45-49	Female	Discharged	25
45-49	Female	On-going care	9
50-54	Male	Discharged	46
50-54	Male	On-going care	26
50-54	Female	Discharged	26
50-54	Female	On-going care	18
50-54	Female	Died	2
55-59	Male	Discharged	42
55-59	Male	On-going care	37
55-59	Male	Died	3
55-59	Female	Discharged	19
55-59	Female	On-going care	16
55-59	Female	Died	3
55-59	Not specified	On-going care	1
60-64	Male	Discharged	25
60-64	Male	On-going care	18
60-64	Male	Died	1
60-64	Female	Discharged	29
60-64	Female	On-going care	21
60-64	Female	Died	1
65-69	Male	Discharged	13
65-69	Male	On-going care	30
65-69	Male	Died	3
65-69	Female	Discharged	17
65-69	Female	On-going care	19
65-69	Female	Died	4

age.factor	sex	status	n
70-74	Male	Discharged	26
70-74	Male	On-going care	34
70-74	Male	Died	6
70-74	Female	Discharged	19
70-74	Female	On-going care	18
70-74	Female	Died	7
70-74	NA	On-going care	1
75-79	Male	Discharged	26
75-79	Male	On-going care	32
75-79	Male	Died	2
75-79	Female	Discharged	19
75-79	Female	On-going care	27
75-79	Female	Died	5
75-79	Not specified	On-going care	1
80-84	Male	Discharged	13
80-84	Male	On-going care	22
80-84	Male	Died	7
80-84	Female	Discharged	17
80-84	Female	On-going care	29
80-84	Female	Died	5
85-89	Male	Discharged	15
85-89	Male	On-going care	26
85-89	Male	Died	10
85-89	Female	Discharged	6
85-89	Female	On-going care	16
85-89	Female	Died	6
90+	Male	Discharged	5
90+	Male	On-going care	13
90+	Male	Died	5
90+	Female	Discharged	10
90+	Female	On-going care	13
90+	Female	Died	4

Table for figure 2B

age.factor	sex	status	n
0-4	Male	Discharged	10
0-4	Male	On-going care	2
0-4	Female	Discharged	8
0-4	Female	On-going care	2
5-9	Male	Discharged	2
5-9	Female	Discharged	6
10-14	Male	Discharged	7
10-14	Male	On-going care	3
10-14	Female	Discharged	5
10-14	Female	On-going care	1
15-19	Male	Discharged	2
15-19	Male	On-going care	1
15-19	Female	Discharged	3
20-24	Male	Discharged	6
20-24	Male	On-going care	1
20-24	Female	Discharged	6
20-24	Female	On-going care	4
20-24	Female	Died	1
25-29	Male	Discharged	4
25-29	Male	On-going care	1
25-29	Female	Discharged	12
25-29	Female	On-going care	5
30-34	Male	Discharged	13
30-34	Male	On-going care	8
30-34	Female	Discharged	23
30-34	Female	On-going care	5
35-39	Male	Discharged	13
35-39	Male	On-going care	7
35-39	Male	Died	2
35-39	Female	Discharged	20
35-39	Female	On-going care	4

age.factor	sex	status	n
40-44	Male	Discharged	18
40-44	Male	On-going care	6
40-44	Male	Died	1
40-44	Female	Discharged	16
40-44	Female	On-going care	8
40-44	Female	Died	1
45-49	Male	Discharged	18
45-49	Male	On-going care	4
45-49	Female	Discharged	13
45-49	Female	On-going care	1
50-54	Male	Discharged	30
50-54	Male	On-going care	6
50-54	Female	Discharged	11
50-54	Female	On-going care	7
50-54	Female	Died	2
55-59	Male	Discharged	23
55-59	Male	On-going care	15
55-59	Male	Died	2
55-59	Female	Discharged	14
55-59	Female	On-going care	4
55-59	Female	Died	2
55-59	Not specified	On-going care	1
60-64	Male	Discharged	17
60-64	Male	On-going care	7
60-64	Male	Died	1
60-64	Female	Discharged	17
60-64	Female	On-going care	7
60-64	Female	Died	1
65-69	Male	Discharged	7
65-69	Male	On-going care	15
65-69	Male	Died	2
65-69	Female	Discharged	10

age.factor	sex	status	n
65-69	Female	On-going care	6
65-69	Female	Died	3
70-74	Male	Discharged	18
70-74	Male	On-going care	17
70-74	Male	Died	4
70-74	Female	Discharged	15
70-74	Female	On-going care	10
70-74	Female	Died	3
75-79	Male	Discharged	15
75-79	Male	On-going care	18
75-79	Male	Died	2
75-79	Female	Discharged	13
75-79	Female	On-going care	11
75-79	Female	Died	3
75-79	Not specified	On-going care	1
80-84	Male	Discharged	4
80-84	Male	On-going care	10
80-84	Male	Died	3
80-84	Female	Discharged	10
80-84	Female	On-going care	12
80-84	Female	Died	1
85-89	Male	Discharged	11
85-89	Male	On-going care	7
85-89	Male	Died	9
85-89	Female	Discharged	3
85-89	Female	On-going care	4
85-89	Female	Died	4
90+	Male	Discharged	4
90+	Male	On-going care	6
90+	Male	Died	4
90+	Female	Discharged	6
90+	Female	On-going care	2

age.factor	sex	status	n
90+	Female	Died	4

Table for figure 4A

day	status	n
-1	Discharged	1
1	Discharged	114
1	Ward	883
1	Ward (O2)	435
1	HDU/ICU	41
1	HDU/ICU (O2)	8
1	HDU/ICU (noninvasive)	47
1	ICU (ventilated)	8
1	Died	5
2	Discharged	340
2	Ward	414
2	Ward (O2)	223
2	HDU/ICU	13
2	HDU/ICU (O2)	4
2	HDU/ICU (noninvasive)	19
2	Died	11
3	Discharged	347
3	Ward	318
3	Ward (O2)	196
3	HDU/ICU	10
3	HDU/ICU (O2)	5
3	HDU/ICU (noninvasive)	19
3	Died	21
4	Discharged	440
4	Ward	240
4	Ward (O2)	171
4	HDU/ICU	10
4	HDU/ICU (O2)	4

day	status	n
4	HDU/ICU (noninvasive)	16
4	Died	31
5	Discharged	552
5	Ward	168
5	Ward (O2)	125
5	HDU/ICU	7
5	HDU/ICU (O2)	2
5	HDU/ICU (noninvasive)	15
5	Died	42
6	Discharged	612
6	Ward	130
6	Ward (O2)	98
6	HDU/ICU	6
6	HDU/ICU (O2)	2
6	HDU/ICU (noninvasive)	15
6	Died	48
7	Discharged	678
7	Ward	94
7	Ward (O2)	64
7	HDU/ICU	5
7	HDU/ICU (O2)	1
7	HDU/ICU (noninvasive)	12
7	Died	56
8	Discharged	718
8	Ward	71
8	Ward (O2)	46
8	HDU/ICU	4
8	HDU/ICU (O2)	1
8	HDU/ICU (noninvasive)	10
8	Died	60
9	Discharged	758
9	Ward	49

day	status	n
9	Ward (O2)	28
9	HDU/ICU	4
9	HDU/ICU (O2)	1
9	HDU/ICU (noninvasive)	4
9	Died	66
10	Discharged	779
10	Ward	32
10	Ward (O2)	21
10	HDU/ICU	4
10	HDU/ICU (O2)	1
10	HDU/ICU (noninvasive)	3
10	Died	69

Table for figure 4B

day	status	n
-1	Discharged	1
1	Discharged	52
1	Ward	431
1	Ward (O2)	219
1	HDU/ICU	22
1	HDU/ICU (O2)	4
1	HDU/ICU (noninvasive)	26
1	ICU (ventilated)	3
2	Discharged	131
2	Ward	255
2	Ward (O2)	154
2	HDU/ICU	9
2	HDU/ICU (O2)	2
2	HDU/ICU (noninvasive)	14
2	Died	5
3	Discharged	163
3	Ward	205

day	status	n
3	Ward (O2)	138
3	HDU/ICU	8
3	HDU/ICU (O2)	2
3	HDU/ICU (noninvasive)	14
3	Died	13
4	Discharged	210
4	Ward	166
4	Ward (O2)	125
4	HDU/ICU	8
4	HDU/ICU (O2)	2
4	HDU/ICU (noninvasive)	13
4	Died	18
5	Discharged	279
5	Ward	127
5	Ward (O2)	94
5	HDU/ICU	5
5	HDU/ICU (O2)	2
5	HDU/ICU (noninvasive)	12
5	Died	23
6	Discharged	320
6	Ward	100
6	Ward (O2)	75
6	HDU/ICU	5
6	HDU/ICU (O2)	2
6	HDU/ICU (noninvasive)	13
6	Died	27
7	Discharged	361
7	Ward	79
7	Ward (O2)	53
7	HDU/ICU	5
7	HDU/ICU (O2)	1
7	HDU/ICU (noninvasive)	11

day	status	n
7	Died	31
8	Discharged	386
8	Ward	66
8	Ward (O2)	41
8	HDU/ICU	4
8	HDU/ICU (O2)	1
8	HDU/ICU (noninvasive)	9
8	Died	34
9	Discharged	421
9	Ward	46
9	Ward (O2)	26
9	HDU/ICU	4
9	HDU/ICU (O2)	1
9	HDU/ICU (noninvasive)	3
9	Died	40
10	Discharged	442
10	Ward	29
10	Ward (O2)	19
10	HDU/ICU	4
10	HDU/ICU (O2)	1
10	HDU/ICU (noninvasive)	2
10	Died	43