



Ministry  
of Justice



Legal Aid  
Agency



Published 16 December 2021

# Legal Aid Statistics quarterly, England and Wales

## July to September 2021

### 1. Main points

**When compared to the post-covid-19 July to September 2020 period representation orders granted in magistrates' court decreased by 16% while Crown Court decreased by 22%.**



When compared to the pre-covid-19 period we also see a 22% decrease and a 15% decrease respectively.

**In the magistrates' court the volume of completed work increased by 22% and associated expenditure increased by 30% when compared to the same post-covid-19 period last year.**



When compared to the pre-covid-19 period from July to September 2019 both workload and expenditure increased by 1%.

**Overall Crown Court expenditure increased this quarter; up by 95% compared with the same period of the previous year.**



When compared to pre-covid-19 period July to September 2019 we see a 17% decrease in expenditure

**Mediation Information and Assessment Meeting volumes were 11% lower than in the same quarter of 2020.**



Mediation starts were also 2% lower while mediation outcomes increased by 8%.

**Applications for civil representation supported by evidence of domestic violence or child abuse decreased by 8%.**



The volume of these granted also decreased by 3% compared to the same period of 2020.

**989 applications for Exceptional Case Funding were received in the last quarter.**



This is a 18% increase from the same quarter last year.

This edition comprises the first release of official statistics for the three-month period from July to September 2021 and the latest statement of all figures for previous periods.

For more detailed commentary, and statistics on providers of legal aid, Central Funds and legal aid in the higher courts, please refer to the [annual publication](#).

For technical detail, please refer to the [User guide](#) to legal aid statistics.

- 
- For other feedback related to the content of this publication, please let us know at [statistics@justice.gov.uk](mailto:statistics@justice.gov.uk)

---

## 2. Statistician's Comment

This publication shows that completed workload and the associated expenditure has increased year on year and has also increased more over the recent quarters, due to recovery from covid-19, across both the criminal legal aid and civil legal aid schemes. Some areas have seen large increases and this is mainly due to comparisons against unusually low volumes of workload in the early stages of the pandemic and in some instances within the report comparisons are also given against pre-covid-19 volumes, in order to provide a comparison against pre-covid-19 levels of activity.

Criminal legal aid expenditure increased compared to the same quarter last year in schemes that support the court system, including the magistrates' and Crown Court. The incoming workload for representation at the courts had returned to levels seen in the period pre-covid-19 but in the most recent period we've seen falls in both courts. Complex trial cases ongoing at the Crown Court are not completing at the same rate as pre-covid-19. There are large increases in expenditure this quarter when comparing to the post-covid-19 quarter from last year, however when compared to pre-covid-19 and two years previously, expenditure has still not fully recovered.

Civil legal aid volumes and expenditure show a mixed picture compared to the same quarter last year. Overall, family law and mediation expenditure has returned to pre-pandemic levels. In July to September 2021, non-family law expenditure remains 12% lower than the same quarter in the pre-covid-19 period. This is driven by the slow recovery of housing work following the impact of covid-19. Overall civil legal aid workload still remains below pre-pandemic levels, by around 11%.

It was expected that criminal and civil legal aid volumes would return to, and even temporarily exceed, historic trend levels and more recent falls could be due to this return to normal levels or impact from further lockdowns.

### 3. Things you need to know

These symbols are used throughout this release to navigate to other documents of interest:



**Data visualisation:**  
Click for tool allowing user-defined charts and tables.



**User Guide:**  
Click for document giving definitions and explanations.



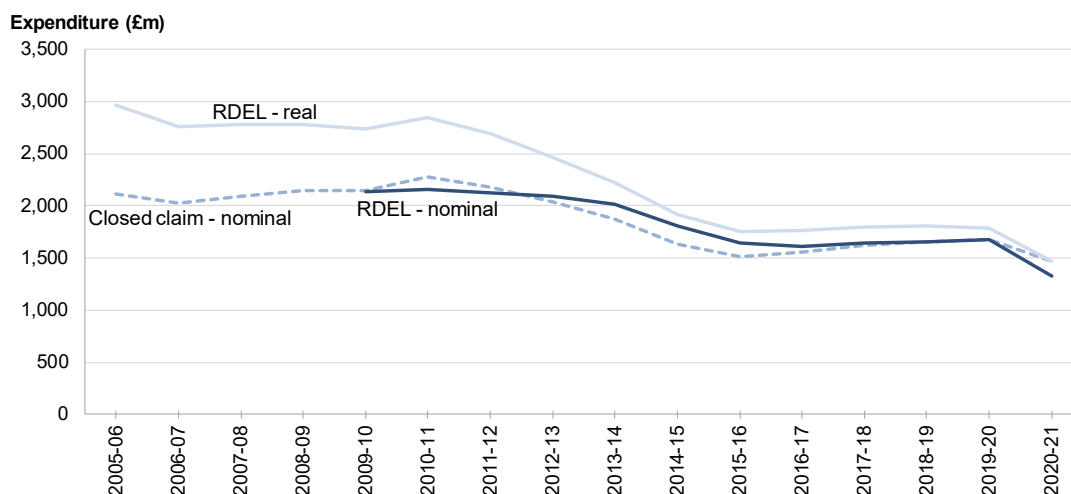
**Tables:**  
Click for access to tables of figures.

To understand trends in legal aid as a whole, it is best to begin by looking at annual expenditure figures and then look at trends in both workload and expenditure for each category of legal aid. Summarising workload activity across the whole legal aid system meaningfully within a single number is difficult because of the diversity of services included and different stages in delivery. For example, legal aid work can be measured at the point when an order for legal aid is granted, or after all the legal aid work is completed and the provider has been paid. Expenditure on legal aid is measured differently for different purposes. The three most often-used measures, shown in Figure 1, are:

- **Closed claim expenditure is the measure used for expenditure figures throughout these legal aid statistics.** It represents the total value of payments made to legal aid providers in relation to pieces of work that are completed in the period. This basis is comparable to volumes of completed work to which it relates, and to the same fine level of detail. This does not include income received or expenditure in relation to debt write-offs.
- Resource Departmental Expenditure Limits - **RDEL nominal** is the main budgeting measure used by government to control current spending, both to set budgets for future years and report on how much has been spent. It represents the value of work carried out in the period better than the closed-case measure but cannot be broken down to such a fine level of detail. This measure does incorporate income and expenditure in relation to debt. 'Nominal' here means not adjusted for inflation. **RDEL real** is the RDEL measure adjusted for inflation to make the value of spending in previous years directly comparable with the specified year.

These measures show a large reduction in legal aid expenditure from around 2010-11, mostly due to changes to the scope of civil legal aid introduced by the Legal Aid, Sentencing and Punishment of Offenders (LASPO) Act from 2013-14, reductions in criminal legal aid workloads and reductions in the fees payable to legal aid providers.

**Figure 1: Overall annual legal aid expenditure, by closed-claim and RDEL nominal and real terms measures (£m), 2005-06 to 2020-21 (see interactive breakdown [here](#))**



## 4. Criminal legal aid



Tables 1.1 and 4.1

**Overall Crown Court expenditure increased this quarter; up by 95% in July to September 2021 compared with the same period of the previous year.**

When compared against the pre-covid-19 period from July to September 2019 they have fallen by 17% so while the Crown Court is showing recovery signs overall workload and expenditure is still below previous levels and this is mainly within the long running and more complex trials.

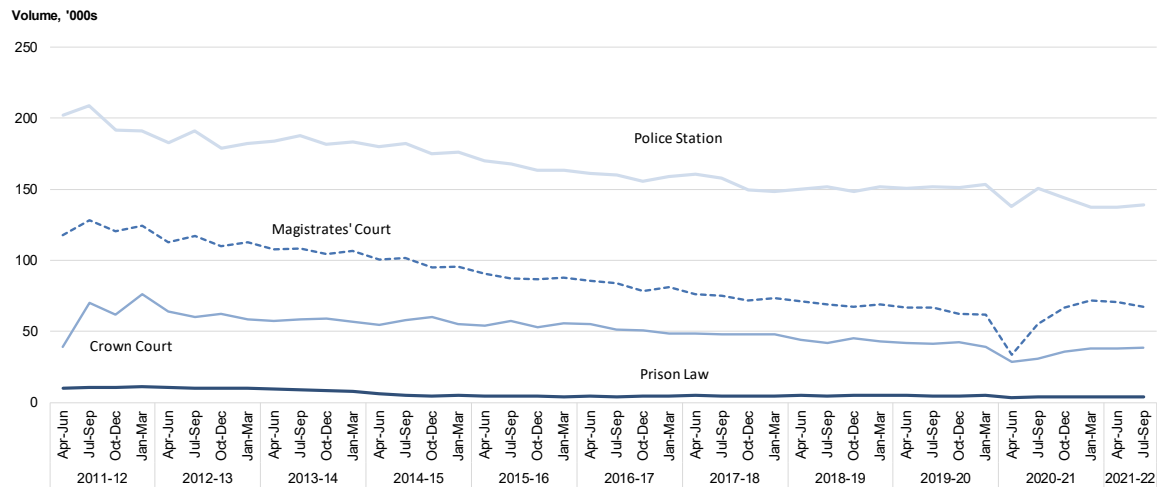
Criminal legal aid is categorised into Crime Lower and Crime Higher. Crime Lower includes police station advice, magistrates' court and prison law. Crime Higher covers the Crown Court and Higher Courts.

**Figure 2: Crime overview, closed case volumes and expenditure for July to September 2021, and comparison with July to September 2020**

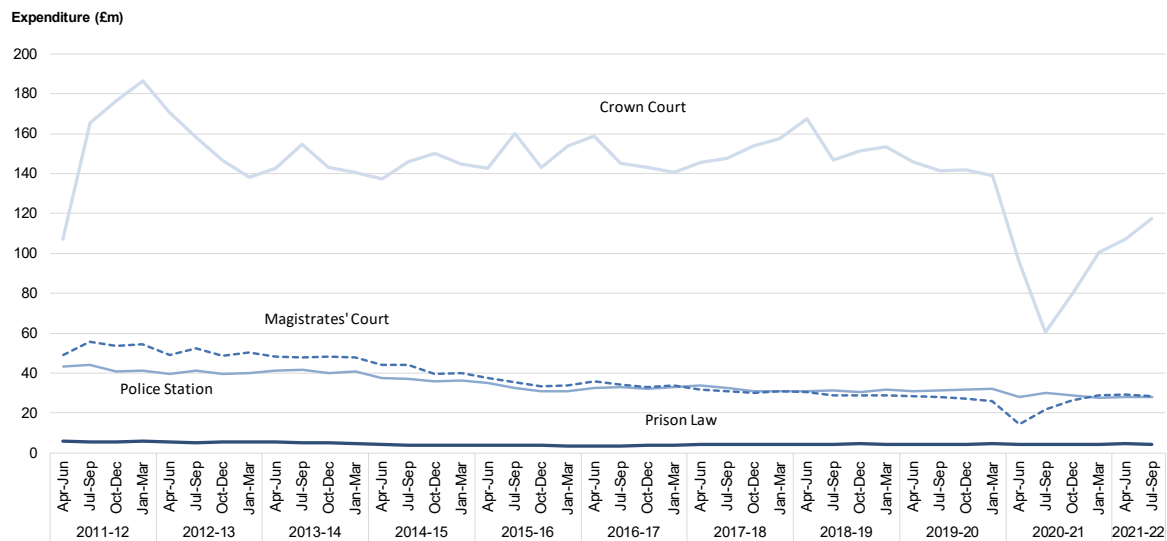
	Category	Workload	Expenditure	
<b>Crime</b>  <b>Workload</b> 249,108(3%↗)  <b>Expenditure</b> £178.3m(53%↗)	Police Station Advice	139,170(8%↘)	£28.1m(7%↘)	
	Magistrates' courts	67,126(22%↗)	£28.2m(30%↗)	
	Crime Lower 210,314(0%↗) £60.9m(8%↗)	Advice & assistance on appeals	208(5%↘)	£322.8k(4%↘)
	Prison Law	3,803(5%↘)	£4.3m(3%↗)	
	Civil work associated with crime	7(74%↘)	£5.5k(60%↘)	
	Crown Court 38,794(26%↗) £117.3m(95%↗)	Solicitor fee scheme	19,975(28%↗)	£70.9m(109%↗)
	Advocate fee scheme	18,818(24%↗)	£46.3m(101%↗)	
	High Cost crime cases	1(0%↔)	£129.1k(96%↘)	

Although Crown Court work comprises a relatively small portion of criminal legal aid in terms of volume, it accounts for around two-thirds of all criminal legal aid expenditure. Conversely, advice relating to the police station makes up the largest portion of workload, but a much smaller proportion of expenditure.

**Figure 3a: Workload in criminal legal aid, April to June 2011 to July to September 2021 (see interactive breakdown of [crime lower](#) and [crown court](#))**



**Figure 3b: Expenditure in criminal legal aid, April to June 2011 to July to September 2021 (see interactive breakdown of [crime lower](#) and [crown court](#))**



Note: Advice and assistance on appeals and civil work associated with crime are excluded from these figures.

**Police station advice**   *Tables 2.1 and 2.2*

This category made up two thirds of the Crime Lower workload between July and September 2021 but less than half of the expenditure. The workload in this period has decreased by 8% compared to the previous year, with expenditure decreasing by 7% (£2.1m). The decrease in police station advice

workload since 2013-14 is also seen in arrest statistics for England and Wales <sup>1</sup>, which has had a similar decline historically.

The majority of the police station advice workload (88% in July and September 2021) consists of suspects receiving legal help with a solicitor in attendance at the police station, with the rest mainly consisting of legal advice over the telephone.

## Applications and grants for representation in the criminal courts



Tables  
3.1 and 3.2

While figures should be interpreted with caution as they may be revised in subsequent quarters as cases move into the Crown court, the number of orders granted for legally-aided representation in the **magistrates' court** decreased by 16% this quarter when compared to the same quarter of the previous year. This is attributed to the lockdown which happened in last year's quarter. In comparison with July to September 2019, the number of orders granted reduced by 22%. This continues the downward trend of the last 3 years, which has been largely driven by Summary Only cases. The proportion of these applications that are granted remains stable at around 95%.

Orders granted for legally-aided representation in the Crown Court also decreased to a larger degree, by 22% this quarter compared to last year, this follows the recent trends in overall Crown Court receipts<sup>2</sup> although when compared to the figure from two years previously there has also been a 15% fall due to the large reduction in the first quarter of the pandemic year. Within the legal aid figure, orders relating to either-way offences decreased by 26%, while those relating to indictable offences decreased by 18%. The proportion of Crown Court applications granted remains at almost 100%.

## Magistrates' court completed work



Tables  
2.1 and 2.2

Legally-aided representation in the magistrates' court comprised almost one-third of the workload and just under half of expenditure in Crime Lower between July and September 2021. The volume of completed work in the magistrates' court increased by 22% this quarter when compared to the same period of the previous year. Expenditure also increased by 30% (£6.6m). This is attributed to the first lockdown and the large falls seen in the comparison quarter last year.

The workload and expenditure increased by 1% and increased by 1% respectively from the pre-covid-19 quarter in July to September 2019. This increase is driven by the accelerated Criminal legal aid reforms since October 2020 which cover payment for work on sending cases to the Crown Court. This new category shown in the tables accompanying this bulletin had 8,802 claims costing around £2m completed this quarter.

---

<sup>1</sup> [www.gov.uk/government/collections/police-powers-and-procedures-england-and-wales](http://www.gov.uk/government/collections/police-powers-and-procedures-england-and-wales)

<sup>2</sup> [www.gov.uk/government/collections/criminal-court-statistics](http://www.gov.uk/government/collections/criminal-court-statistics), Table C1

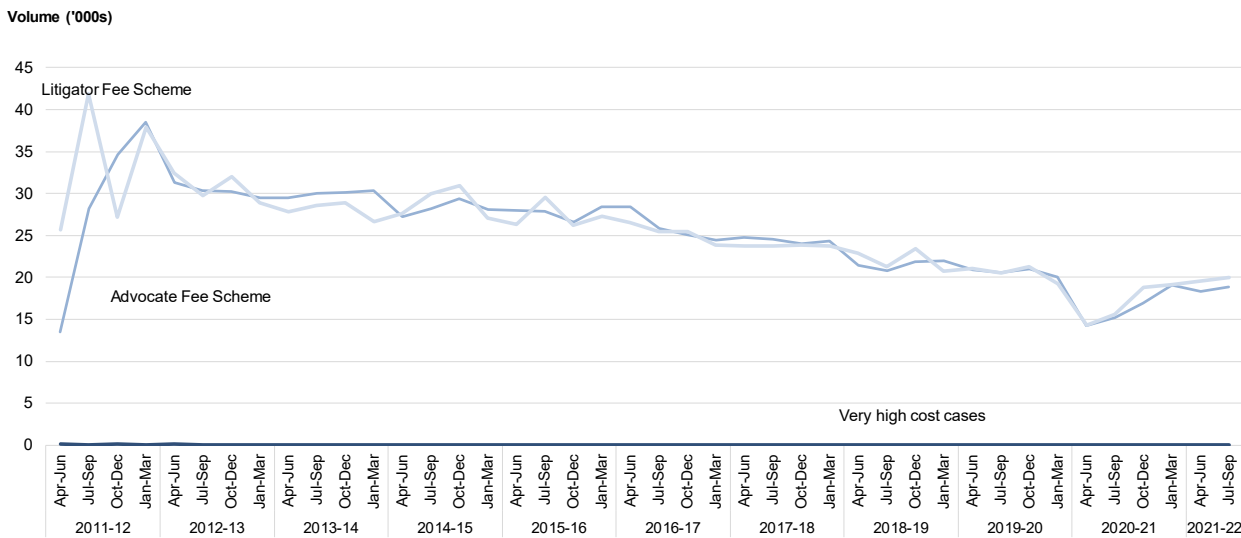


## Crown Court completed work

Completed work volumes within the **litigator (solicitor) fee scheme** increased by 28% in July to September 2021 compared to the same period of the previous year, driven mainly by a 202% increase in trial claims. This recovery in workload is from extra resource within the HMCTS estate and completion of shorter less complex jury trials from the outstanding backlogs. When compared to the pre-covid-19 quarter in 2019 the current workload decreased by 3% with an 18% decrease in trial claims.

In the **advocate fee scheme**, completed claims increased by 24% compared to the same period last year. When compared to the pre-covid-19 quarter in 2019 the current workload decreased by 8%.

**Figure 4a: Workload in the Crown Court, April to June 2011 to July to September 2021 (see interactive breakdown [here](#))**

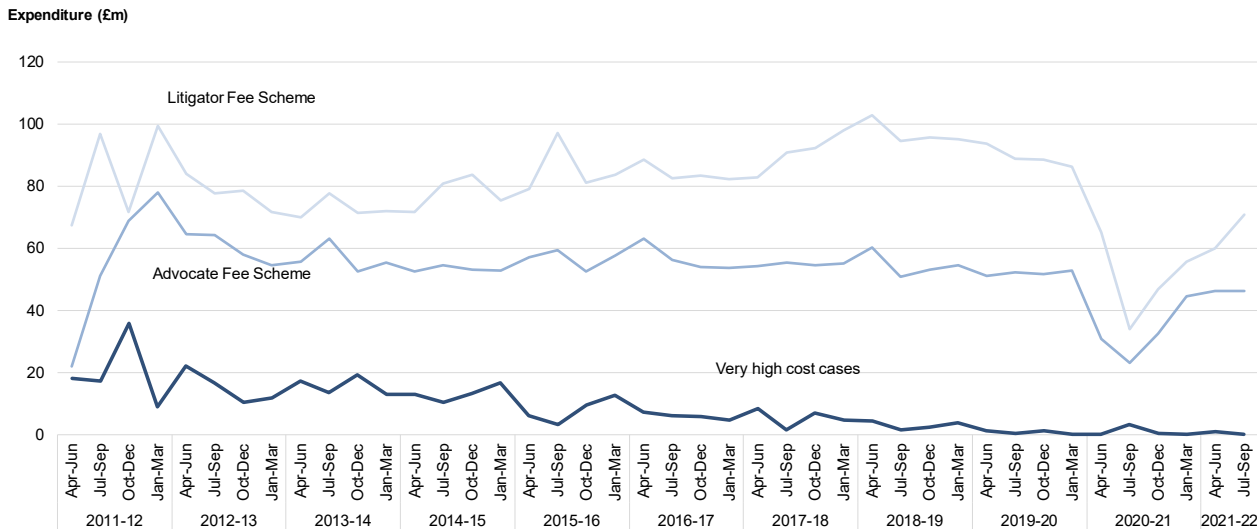


In the litigator fee scheme, expenditure increased by 109% in July to September 2021 compared to the same period of the previous year (although a 20% decrease against the pre-covid-19 period). In the advocate fee scheme, the value of payments increased by 101% compared to the same period of the previous year. This increase though should be seen in the context of a 12% decrease against the pre-covid-19 period from 2019. Figures for expenditure on work completed in the Crown Court should be interpreted with caution as they may be revised in subsequent quarters as claims are assessed further on appeal and further payments added to the value of some completed claims.

The **Very High-Cost Case (VHCC)** scheme covers those Crown Court cases which, if the case were to proceed to trial, would likely last more than 60 days. These cases can span several years and, while they may involve small numbers of defendants, the associated expenditure is high in comparison.

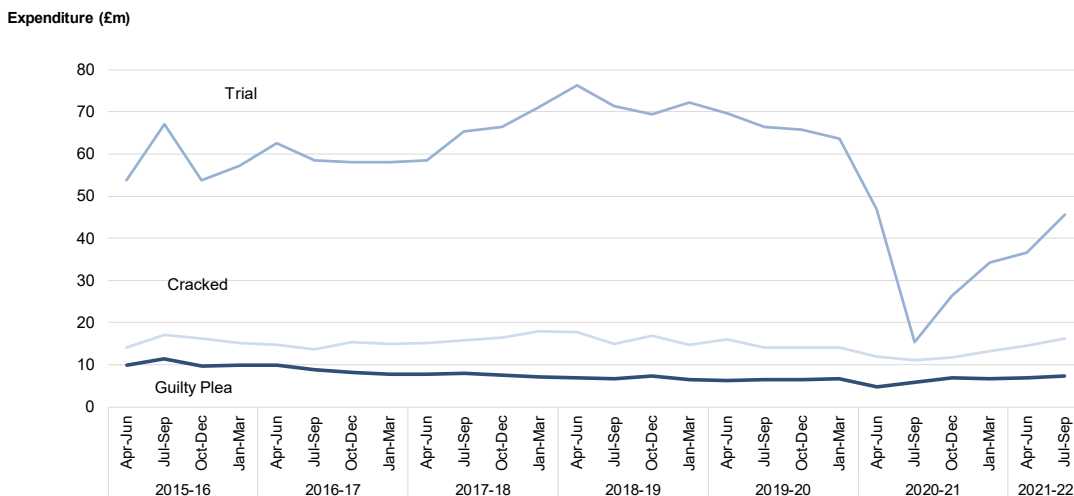
There was one defendant represented in the VHCC contracts that concluded in the July to September 2021 quarter. Expenditure on this work over the duration of the contracts (i.e. on the closed-case basis) was £129.1k. While workload comprises a tiny proportion of legal aid in the Crown Court overall, the VHCC scheme represents less than 1% of the cost, although down from over 15% ten years ago.

**Figure 4b: Expenditure in the Crown Court, April to June 2011 to July to September 2021 (see interactive breakdown [here](#))**



The large falls in completed expenditure are a consequence of the large fall in the number of jury trials completing in the Crown Court, as all expenditure across the case will be in the final main bill. Figure 4c below, looking at the litigator fee scheme in isolation but equally applicable to both schemes, shows the impact of falling trials on expenditure. Trial completed expenditure has been more adversely affected than guilty pleas and cracked trials, where a defendant changes their plea before the trial, with litigator fee expenditure much lower. Previously it was more than £60m and it is still only around two-thirds of this. A lack of available resources has led to fewer jury trials with a subsequent increase in trials awaiting completion.

**Figure 4c: Litigator Fee Scheme Crown Court expenditure by claim type, April to June 2015 to July to September 2021 (see interactive breakdown [here](#))**



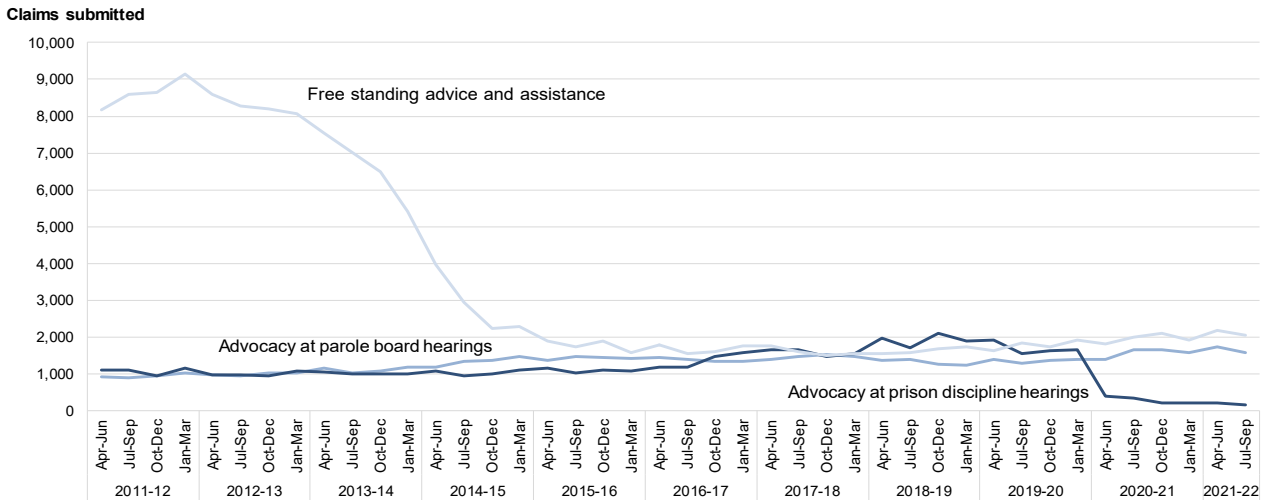




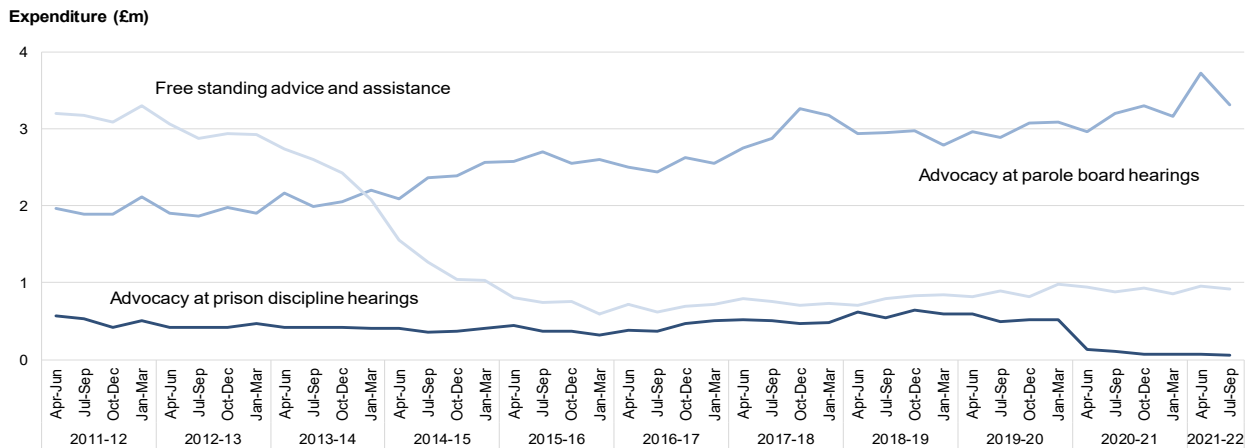
**Prison Law**

Workload this quarter decreased by 5% compared with the same period in the previous year, driven by advocacy assistance at parole board hearings which decreased by 4% compared to last year and has decreased by 9% since last quarter (see figure 5a). Advocacy at parole board hearings currently make up just over two-fifths of prison law workload, but a much larger proportion of costs (77%), so expenditure on prison law overall increased by 3% over this period. Although the prison law workload decreased compared to last year, it decreased even more by 19% when compared to July to September 2019. This is not reflected in the expenditure which has remained level over the 2-year period. Since April to June 2020, the workload and expenditure for advocacy assistance at prison discipline hearings has remained low. Year-to-year comparisons show that workload decreased by 54% and expenditure decreased by 42% this quarter compared to last year. This continues the downward trend of this prison law category.

**Figure 5a: Prison Law completed workload, April to June 2011 to July to September 2021 (see interactive breakdown [here](#))**



**Figure 5b: Prison Law completed expenditure, April to June 2011 to July to September 2021 (see interactive breakdown [here](#))**



\*New categories not shown: 'advocacy assistance at sentence reviews' and 'advocacy assistance at Parole Board reconsideration hearings'

## 5. Civil legal aid



Tables 1.2  
and 8.1

Overall, legally aided family law and mediation expenditure mirrored figures seen pre-pandemic. In July to September 2021, non-family law expenditure remained 12% lower than the same period of 2019. This is driven by the slow recovery of legally aided immigration and housing work following the impact of covid-19. Overall, civil legal aid workload remained 11% below pre-pandemic figures.

Civil legal aid can be categorized by area of law into family and non-family. The category of family legal aid covers all work on both private and public family law and includes work associated with the Children Act, domestic abuse, financial provision and family mediation. Non-family legal aid encompasses all work related to immigration, mental health, housing and other non-family law.

**Figure 6: Civil overview, closed case volumes and expenditure for July to September 2021, and comparison with July to September 2020**

		Category	Workload	Expenditure
Civil  Workload 59,915(11% ↗)  Expenditure £184.5m(4% ↗)	Family 26,850(9% ↗) £149.7m(5% ↗)	Family Public	17,070(4% ↗)	£120.7m(2% ↗)
		Family Private	9,780(19% ↗)	£29m(19% ↗)
		Mediation and MIAMs*	5,034(4% ↘)	£1.5m(1% ↘)
	Non-Family 28,031(16% ↗) £33.2m(0%)	Immigration	9,872(27% ↗)	£9.2m(17% ↗)
		Mental Health	8,542(3% ↘)	£9.7m(5% ↘)
		Housing	6,422(32% ↗)	£4.5m(30% ↘)
		Other Non-Family	3,195(17% ↗)	£9.7m(12% ↗)

\*Not included in the Family total

Although workload for family and non-family law cases are similar, non-family law comprises a relatively small proportion of the overall civil legal aid expenditure. Public family legal aid makes up two thirds of family legal aid work and 81% of expenditure.

## Legal help and controlled legal representation

Tables  
5.1 - 5.3, 7.1 - 7.2



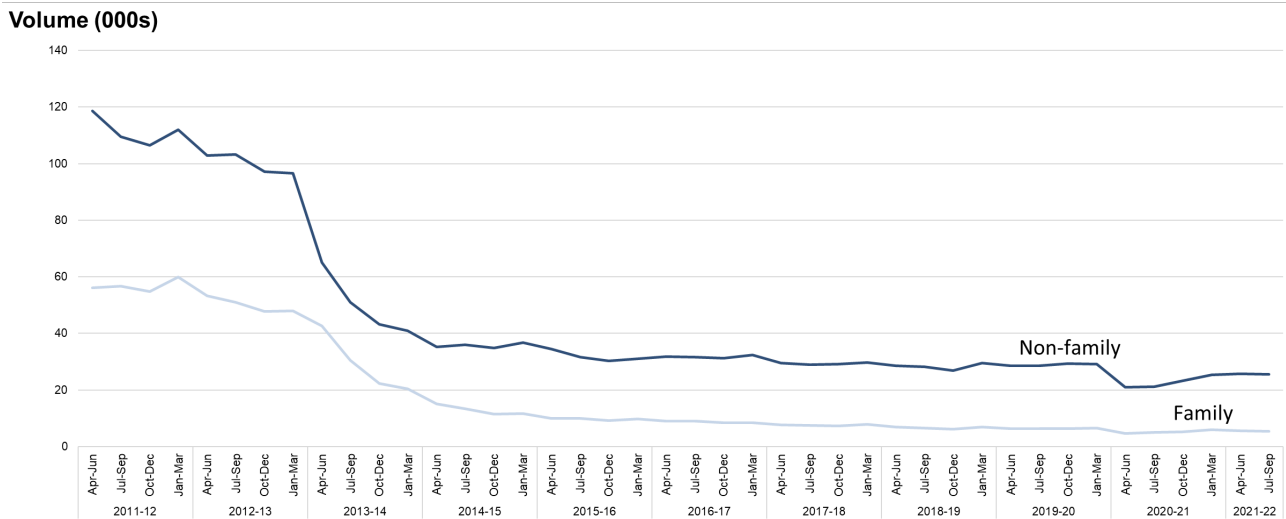
In the latest quarter, there was a 7% increase in legal help new matter starts compared to the same period of 2020. The volume of completed claims increased by 18% and expenditure also increased by 6% over the same period (figure 7).

Overall, the recovery of legal help starts, completed claims and expenditure has been slow following the initial impact of the covid-19 pandemic. Although positive, legal help workload and expenditure has not returned to levels seen pre pandemic. In July to September 2021, new matter starts remained

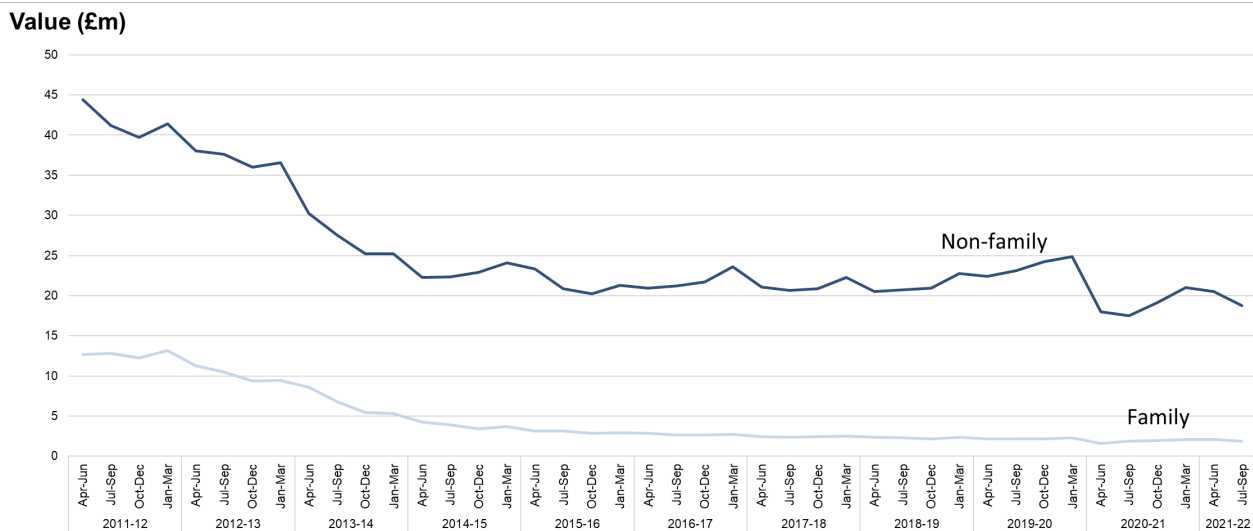
lower (13%) than the same period of 2019. The volume of completed claims has fallen by 11% and expenditure has also decreased by 18% over the same period.

The implementation of the LASPO Act in April 2013 resulted in large reductions in legal help workload, with the decline in the overall trend being further exacerbated by the effects of covid-19, workload now sits at less than one-quarter of pre-LASPO levels.

**Figure 7a: Completed workload in legal help and controlled legal representation, April to June 2011 to July to September 2021 (see interactive breakdown [here](#))**



**Figure 7b: Completed workload expenditure in legal help and controlled legal representation, April to June 2011 to July to September 2021 (see interactive breakdown [here](#))**



### Family legal help

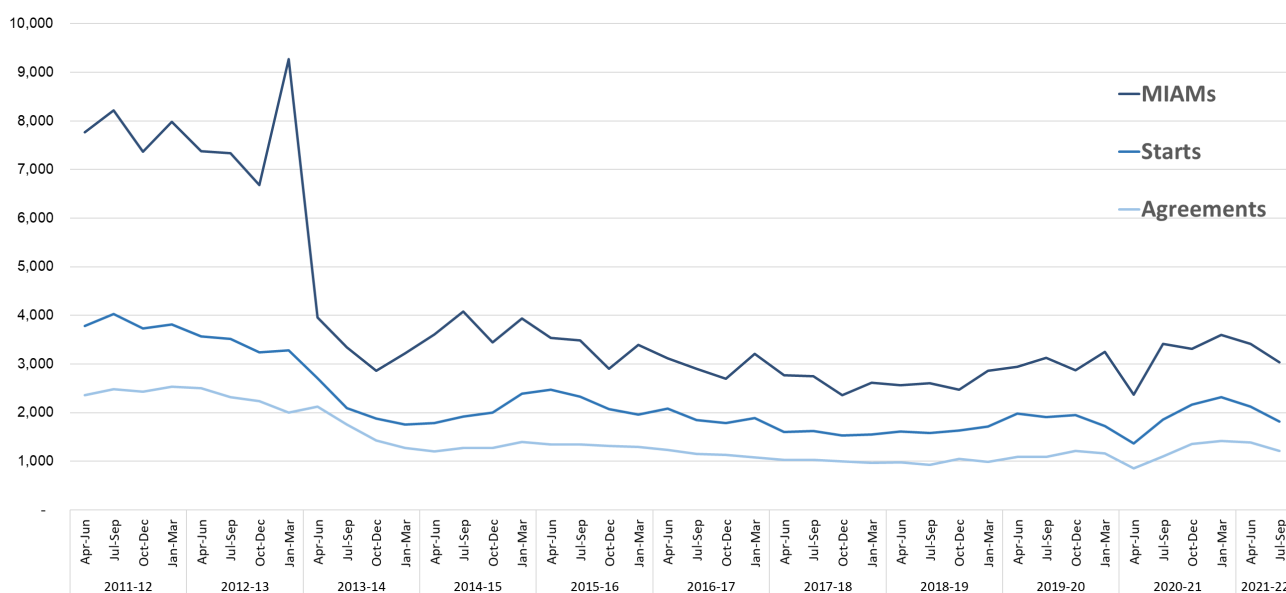
In July to September 2021, family legal help starts decreased by 12% compared to the same quarter last year. Completed claims increased by 7% and expenditure remained unchanged. While recent quarters show a gradual increase in family legal help completed claims and expenditure, numbers are

significantly lower than those pre pandemic. Compared to the respective quarter of 2019, family legal help starts were down 26%, completed claims were down 16% and expenditure has fallen by 13%. There was a steep decline in family legal help immediately following the implementation of LASPO Act in April 2013, with a more gradual decline over the last 5 years.

Family mediation involves an independent and impartial professionally accredited mediator discussing problems with a divorcing or separating couple. A Mediation Information and Assessment Meeting (MIAMs) is an initial meeting between one or both parties and a mediator to see if family mediation could be used to reach agreement without using the courts. MIAMs decreased by 11% in the last quarter compared to the previous year and currently stand at around a third of pre-LASPO levels. Family mediation starts decreased by 2% although total mediation outcomes increased by 8%, of which 61% were successful agreements, and are now sitting at over half of pre-LASPO levels.

MAIMS, family mediation starts, and outcomes decreased significantly following the covid-19 restrictions in March 2020. Since, volumes and expenditure rapidly increased to levels temporarily exceeding 2019 figures. However, in the current quarter, MAIMS have dropped and are down 18% compared to the same period of 2019. Mediation starts have fallen to below 5% of pre pandemic levels. While, mediation outcomes continue to exceed pre-pandemic figures (up 8%).

**Figure 8: Legally Aided family mediation assessments, starts and agreements, April to June 2011 to July to September 2021 (see interactive breakdown of MIAMs and starts/agreements)**



### Non-family legal help and controlled legal representation

Controlled legal representation relates to representation at tribunal but unlike civil representation, the decision on whether to grant legal aid is delegated to providers.

Legal help and controlled legal representation make up over 95% of both immigration and mental health legal aid cases.

The LASPO Act 2013 made changes to the scope of legal aid for immigration law, but some areas remained in scope. Workload that remains in the immigration category consists largely of asylum-related work. Having fallen by over 45% in April to June 2020, new matter starts in legal help immigration cases increased by 24% in July to September 2021 compared to the same quarter of the previous year. Completed claims in immigration increased by 28% in the last quarter compared to the previous year and expenditure increased by 22%. In the current quarter, the number of immigration matters started exceeds pre pandemic levels by 7%. The volume of claims completed, and

expenditure is still slowly recovering, however is yet to return to pre pandemic levels (down 13% and 24% respectively).

Within mental health, most funding is spent on providing assistance to sectioned clients appealing the terms of their detention before a mental health tribunal. Mental health new matter starts decreased by 5% when comparing the latest quarter to the previous year. Completed claims decreased by 2% and expenditure decreased by 5% over the same period.

Over 80% of legal aid housing work is made up of legal help. The volume of legally aided housing work halved between July to September 2012 and July to September 2013. The trend then fluctuated for around 18 months but since 2014 it has been falling. Housing legal aid work has been particularly affected by covid-19 with starts and completed claims nearly halving again between January to March 2020 and April to June 2020. In July to September 2021, there was a 36% increase in legal help housing work started compared to the same quarter the previous year. There were also increases in completed claims (61%) and increases in expenditure (2%). Although recent quarters have displayed a gradual recovery following the impact of covid-19, housing legal aid starts, completed claims and expenditure remain considerably lower than the same period of 2019 (by 27%, 5% and 20% respectively).

## Civil representation

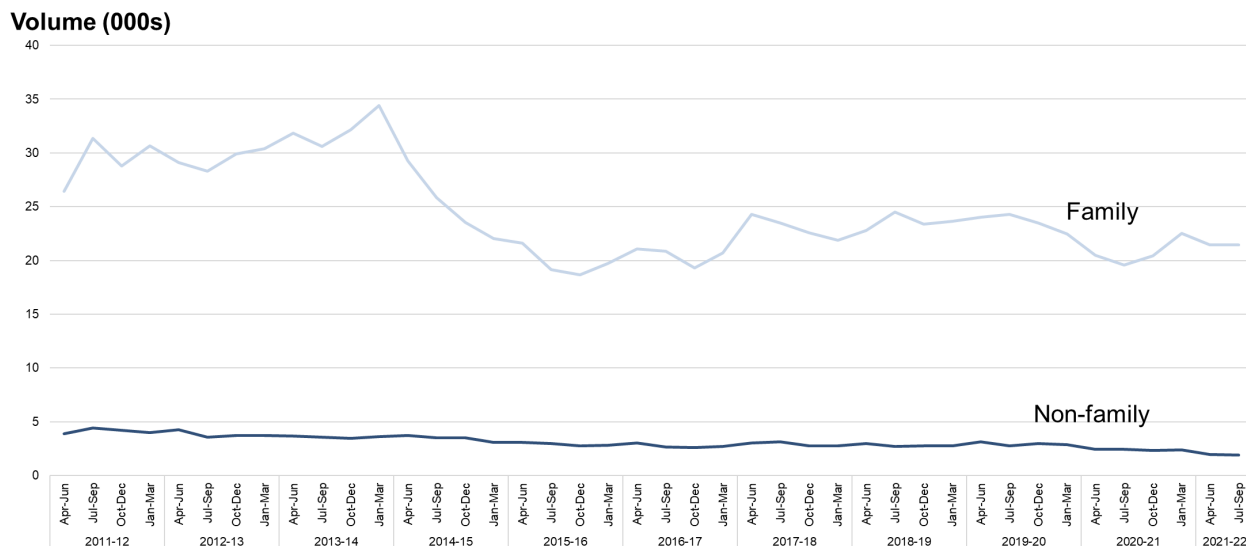
Tables  
6.1 - 6.10



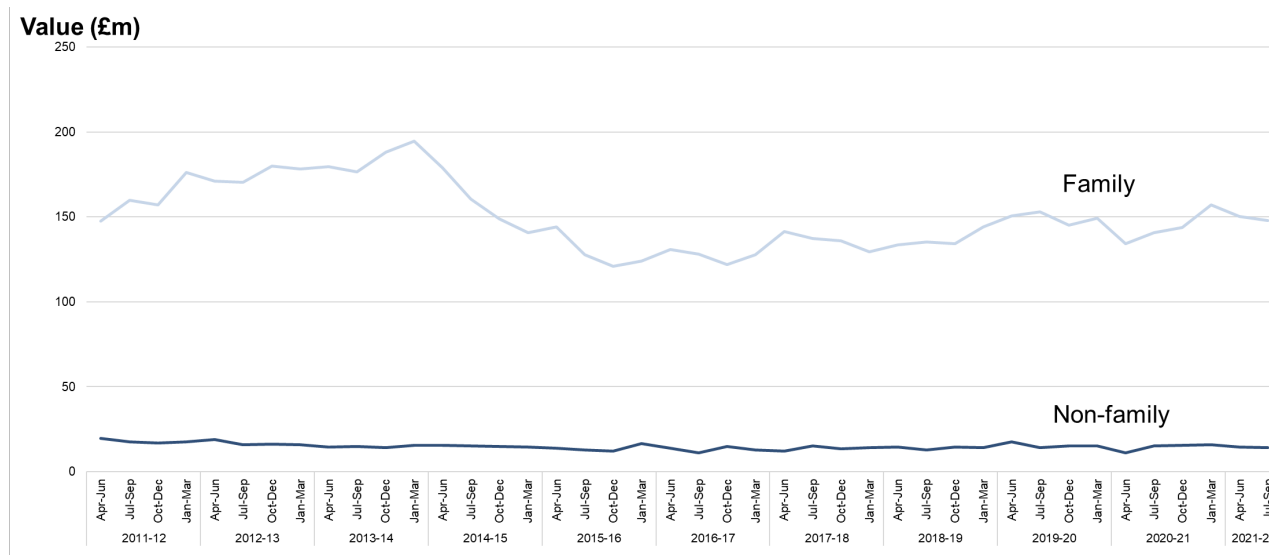
The number of civil representation certificates granted in the last quarter decreased by 9% compared to the same period of the previous year. The number of certificates completed however, increased by 6%, and the associated expenditure also increased by 4% over the same period.

Compared to the same period of 2019 (pre-covid-19) certificates granted in the last quarter remain slightly lower (9%) than pre-pandemic levels. The number of certificates completed has fallen by 14% and the associated expenditure is down by only 3%.

**Figure 9a: Completed workload in civil representation, April to June 2011 to July to September 2021 (see interactive breakdown [here](#))**



**Figure 9b: Completed workload expenditure in civil representation, April to June 2011 to July to September 2021 (see interactive breakdown of costs met by LAA and costs met by opponent)**



### Non-Family Civil Representation

Non-family certificates completed made up 10% of the total civil representation workload and 9% of the expenditure. There were only a small number of immigration and mental health cases in civil representation as most work in these areas consists of controlled legal representation.

The majority of certificates completed in this category are for housing work. There has been a gradual decline in housing certificates completed and expenditure since 2014. In the latest period, housing certificates completed decreased by 38% and expenditure is down 40% compared to the same period of the previous year. However, housing civil representation certificates granted during the latest quarter have more than doubled compared to July to September 2020 (up 115%).

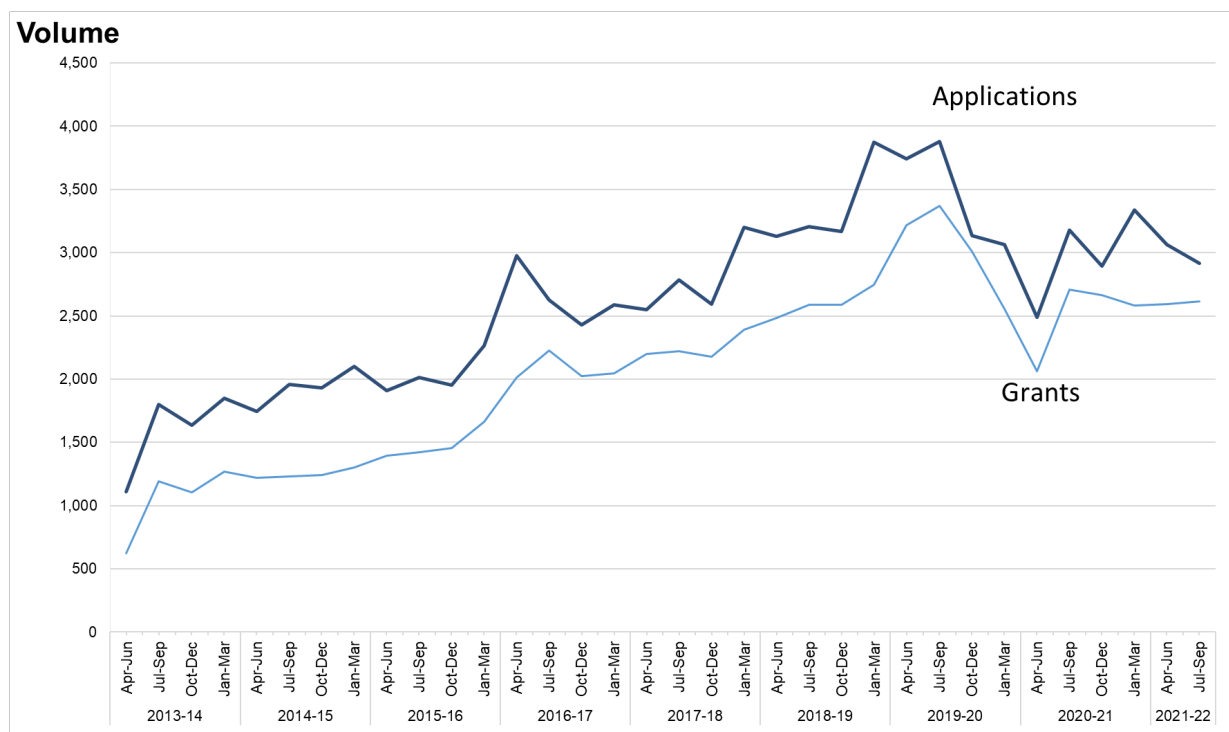
### Family civil representation

In July to September 2021, certificates granted for family civil representation work decreased by 12% compared to the respective quarter of the previous year. Certificates completed increased by 10% and the associated expenditure has also increased by 5% over the same period.

Compared to the same quarter of 2019, certificates granted is down 7%, certificates completed has fallen 12% and closed case expenditure has fallen 3% below pre-pandemic levels. The volume and expenditure for closed case domestic violence civil representation increased following the initial impacts of covid-19 and continues to exceed pre-covid-19 levels (35% and 30% higher respectively – compared to July to September 2019).

While civil representation for public family law remains available, the LASPO Act removed legal aid for most private family law including issues such as contact or divorce. However, private family legal aid remains available for such cases where there is a risk of domestic violence or child abuse. In July to September 2021, applications for civil representation supported by evidence of domestic violence or child abuse decreased by 8% compared to the same period of the previous year. The number of these granted decreased by 3% over the same period. The proportion of applications granted remained steady at around 70% from the inception of this type of application until the end of 2015, before increasing to around 80%. The provisional figure for the latest quarter is 84%.

**Figure 10: Applications received and total certificates granted via the domestic violence and child abuse gateway, April to June 2013 to July to September 2021 (see interactive breakdown of applications received and certificates granted)**



### Judicial reviews

Of all civil representation applications granted, around 3,000 a year relate to judicial review; 582 in the last quarter. The number granted in July to September 2021 decreased by 16% compared with the same quarter in 2020. Over half of judicial reviews were for public law and a fifth were for immigration cases. Judicial review data is available in the detailed csv accompanying this bulletin.

### Exceptional Case Funding (ECF)



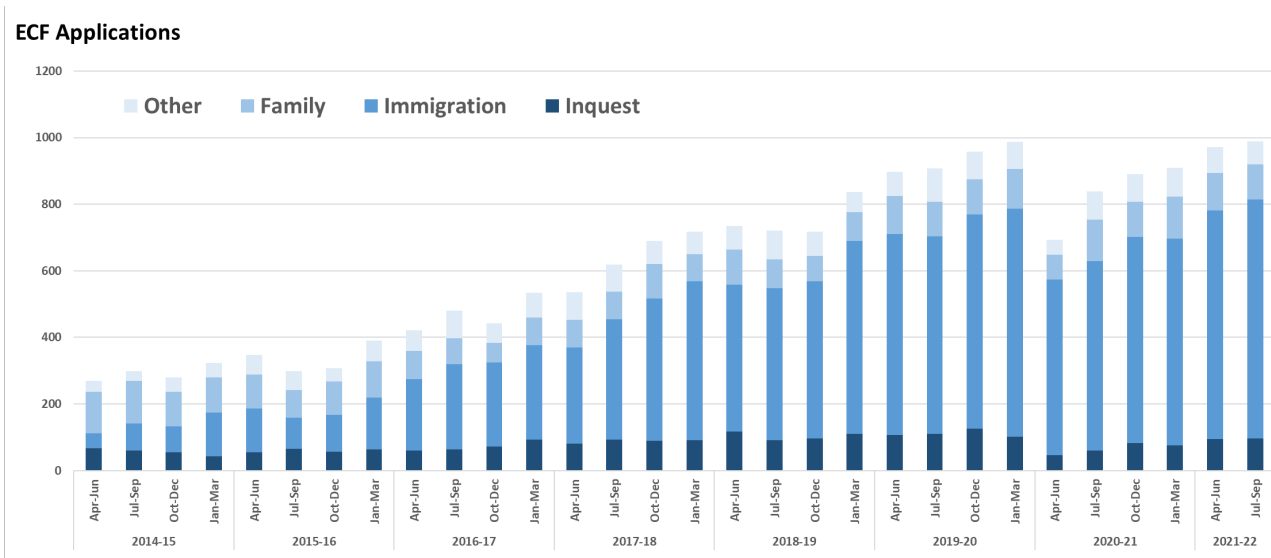
Tables  
8.1 and 8.2

The Exceptional Case Funding (ECF) scheme was introduced as part of LASPO. An ECF application for civil legal services is made where a case falls outside the scope of civil legal aid but the client or conducting solicitor believes failure to provide funding would be a breach of the Human Rights Act 1998

There were 989 applications for ECF received from July to September 2021. This is a 18% increase from the same quarter last year and 9% higher than the same period of 2019 (pre-covid-19). 947 (96%) of applications received in the latest quarter were new applications.

Of the 989 ECF applications received between July and September 2021, 92% (914) had been determined by the LAA as of 01 December 2021. 77% (707) of these were granted, 11% (102) were refused and 9% (84) rejected (see figure 11).

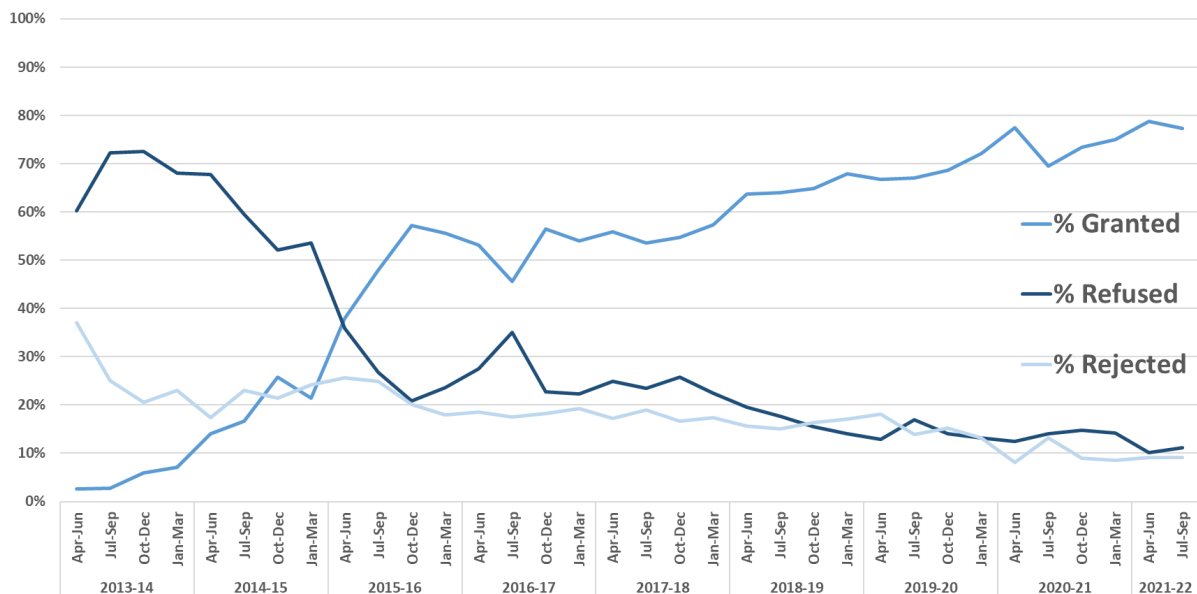
**Figure 11: Volume of ECF applications received, July to September 2018 to July to September 2021 (see interactive breakdown [here](#))**



Among the ECF applications received between July and September 2021, immigration (73%), inquest (10%), and family (11%) remained the most requested categories of law. The increase in ECF applications over the last four years is driven by an increase in immigration applications.

**Figure 12: Proportion of ECF determinations by outcome, April to June 2015 to July to September 2021 (see interactive breakdown [here](#))**

**Proportion of determined ECF applications**





## 6. Further information

---

This publication presents quarterly data trends. For figures published annually, including those on providers of legal aid, appealing legal aid decisions, Central Funds, butterfly charts and legal aid in the higher courts, please refer to our [annual publication](#).

---

### Accompanying files



- **Tables:** A set of tables, which give further detail and full time-series for each area.
- **More detailed data** and **Civil detail data:** Detailed files to enable independent analysis, provided in .ods (OpenDocument Spreadsheet) format.

### Web tools



- **'Data visualisation tool'** A web-based tool allowing the user to view and customize charts and tables based on the published statistics.

### Help and Documentation



- **User Guide to legal aid statistics:** This provides comprehensive information about data sources and quality as well as key legislative changes.
- **Index of data in Legal aid statistics:** An index to the more detailed data published in the .ods files, lists of available data from Legal Aid systems and guidance on how to work with the more detailed data using pivot tables.
- **Quality Statement:** This provides detail on how legal aid statistics meet user needs

### National Statistics status



National Statistics status means that official statistics meet the highest standards of trustworthiness, quality and public value. All official statistics should comply with all aspects of the Code of Practice for Official Statistics.

They are awarded National Statistics status following an assessment by the Authority's regulatory arm. The Authority considers whether the statistics meet the highest standards of Code compliance, including the value they add to public decisions and debate.

It is the Ministry of Justice's responsibility to maintain compliance with the standards expected for National Statistics. If we become concerned about whether these statistics are still meeting the appropriate standards, we will discuss any concerns with the Authority promptly. National Statistics status can be removed at any point when the highest standards are not maintained, and reinstated when standards are restored.

## Contact

Press enquiries should be directed to the Ministry of Justice press office:

Tel: 020 3334 3536

Email: [newsdesk@justice.gsi.gov.uk](mailto:newsdesk@justice.gsi.gov.uk)

Other enquiries about these statistics should be directed to the Data and Evidence as a Service (DES)

– Courts and people division of the Ministry of Justice:

Carly Gray,

Ministry of Justice

Email: [statistics@justice.gov.uk](mailto:statistics@justice.gov.uk)

Tel: +447784 275495

© Crown copyright Produced by the Ministry of Justice

Alternative formats are available on request from [statistics.enquiries@justice.gsi.gov.uk](mailto:statistics.enquiries@justice.gsi.gov.uk)