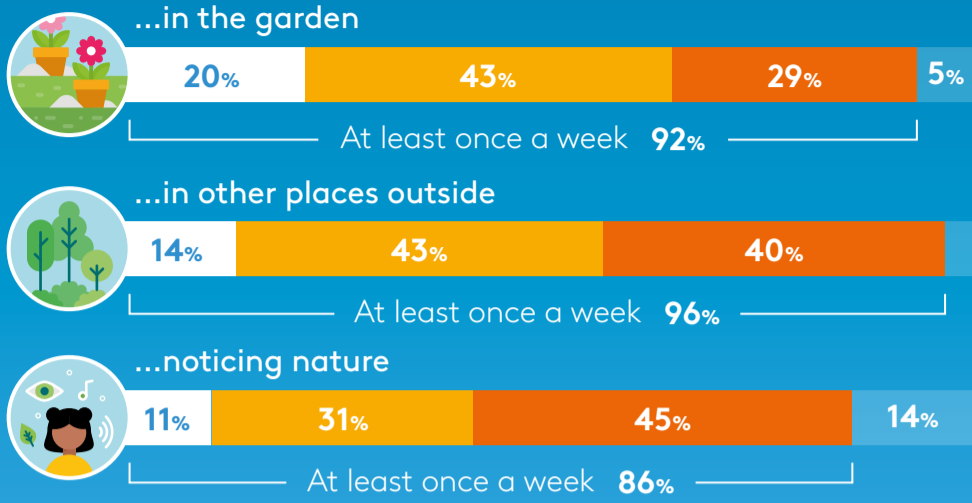


## TIME SPENT IN GREEN AND NATURAL PLACES IN THE PAST WEEK



- Everyday
- Most days
- Once or twice
- Never



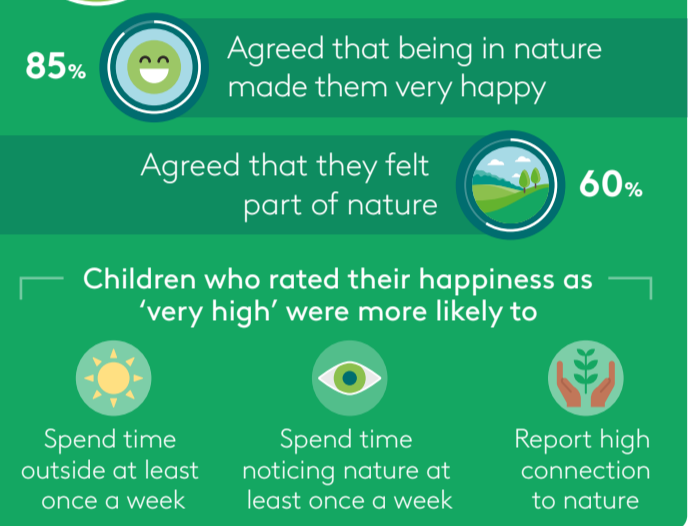
### IN THE PAST WEEK, CHILDREN HAD MOST OFTEN VISITED...



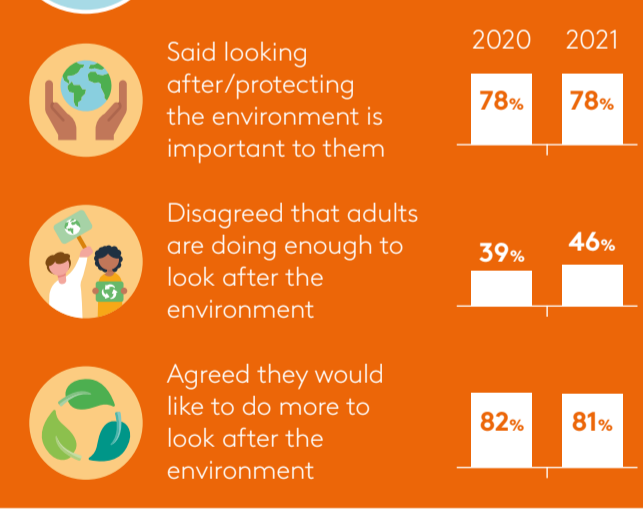
### MOST LIKED ABOUT SPENDING TIME OUTSIDE...



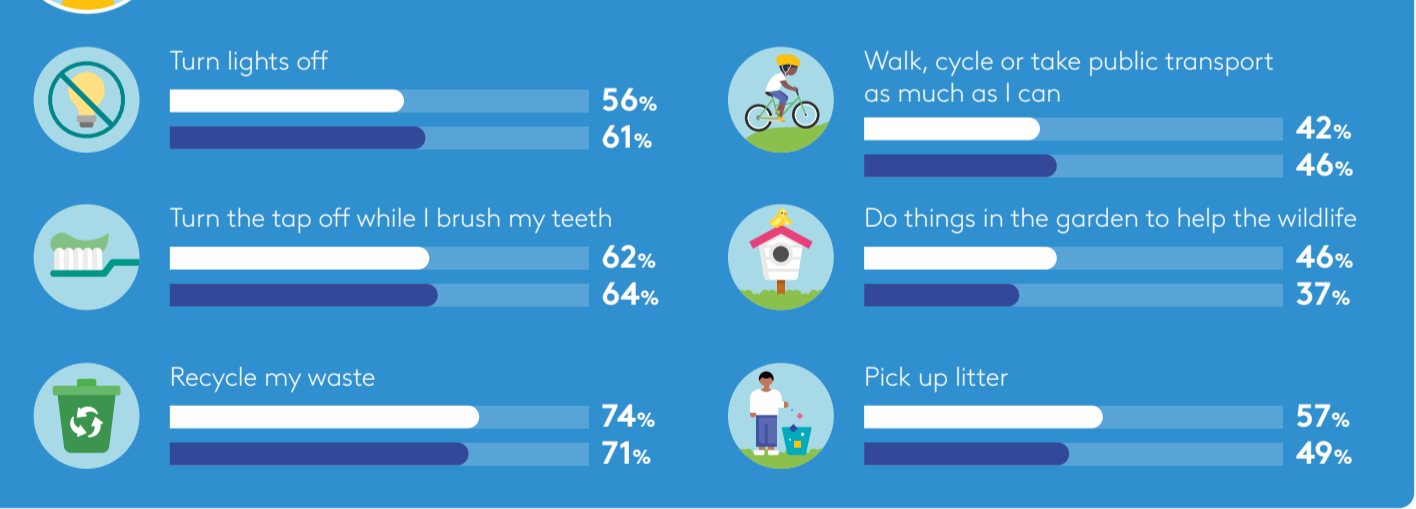
### NATURE, CONNECTION AND WELL-BEING



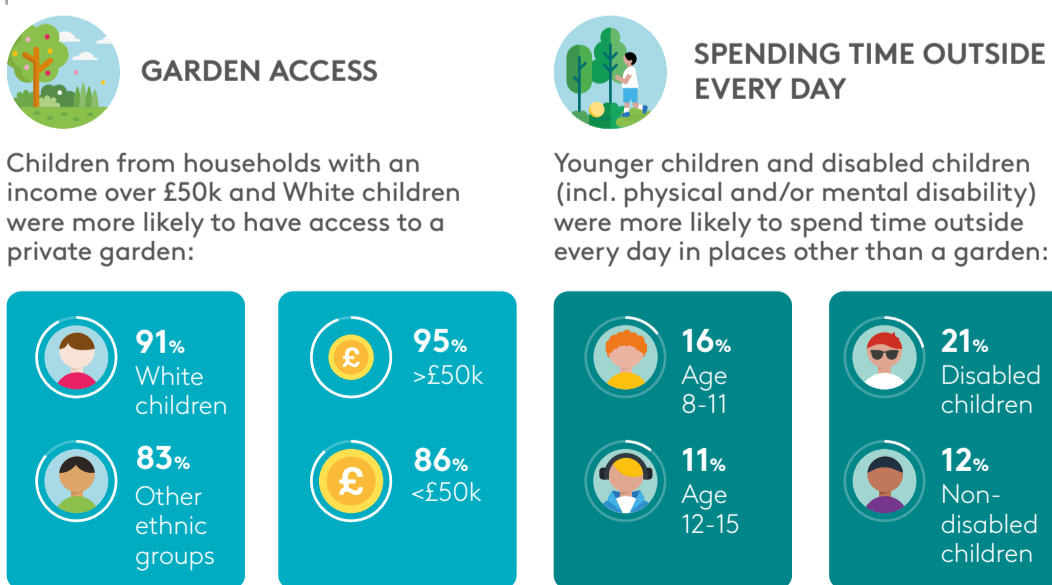
### ENVIRONMENTAL CONCERNS COMPARISON WITH 2020



### TAKING ACTION – WHAT CHILDREN SAY THEY DO TO LOOK AFTER THE ENVIRONMENT

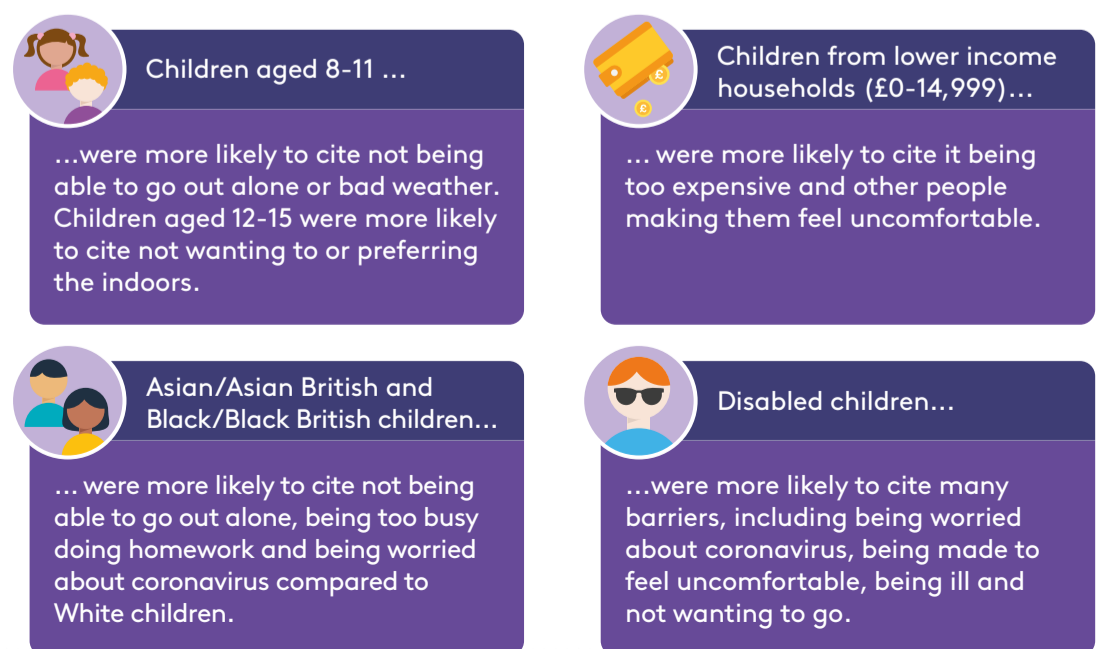


### GROUP DIFFERENCES IN ENGAGEMENT WITH NATURE



### BARRIERS

#### REASONS GIVEN FOR NOT SPENDING MORE TIME OUTSIDE



\*A representative sample of 2,048 children aged 8-15 years old between 10th – 31st August 2021