

The UK's points-based immigration system: **Application guidance**



The UK's points-based immigration system: Applying to work or study in the UK

Before you apply to work or study in the UK under the points-based immigration system, you should check if you're eligible for the **EU Settlement Scheme**.

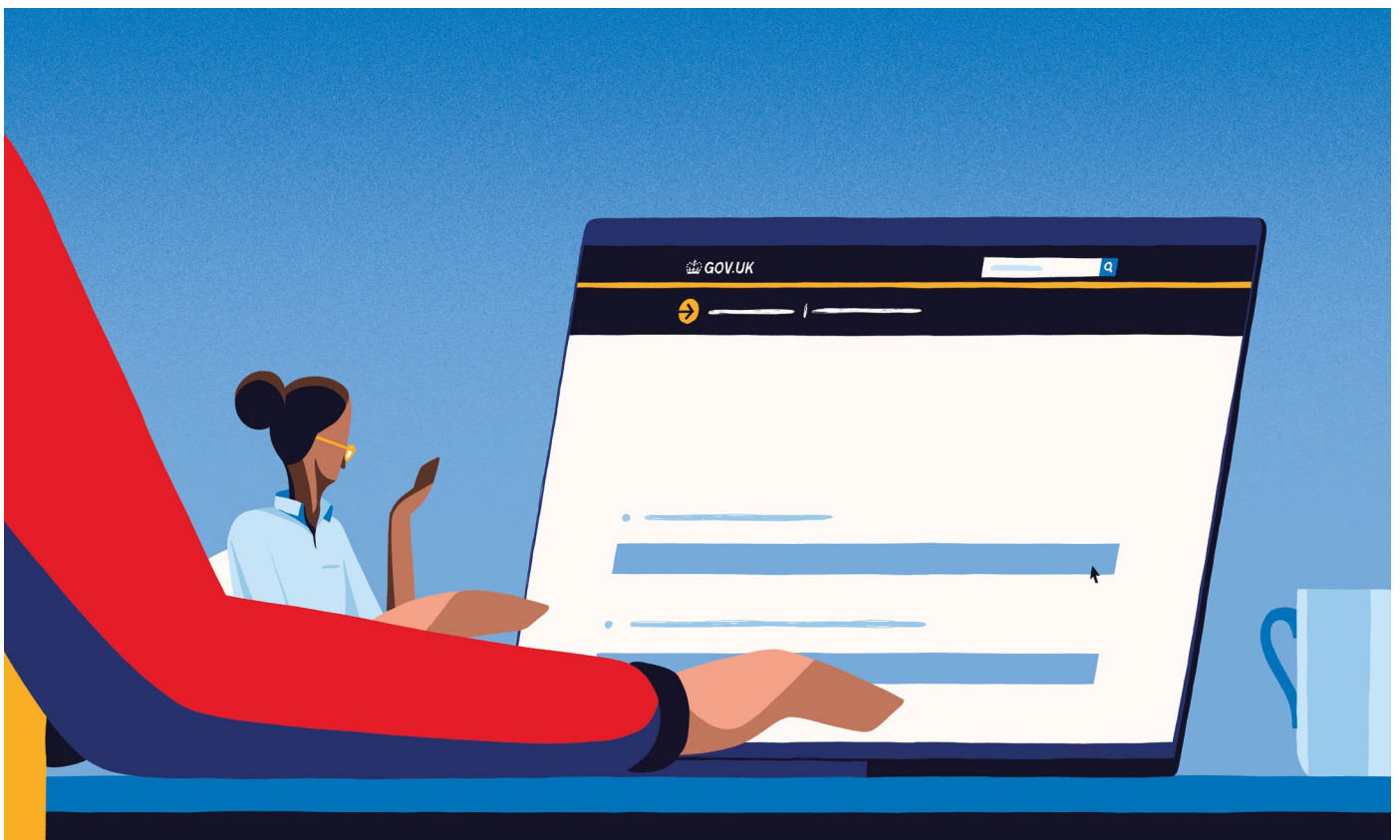
If you are an EU, EEA or Swiss citizen planning to come to the UK to work or study, you may need to apply through the UK's points-based immigration system. This guide covers some of the key things you need to know about the application process.



Start your application on GOV.UK

You will start your application for a visa to work or study in the UK online at GOV.UK. As part of your application, you will need to complete identity verification. There are two ways you can do this. Most people will be able to complete identity verification through the UK Immigration: ID Check app. This will enable a smoother journey and will allow you to have a fully online experience. If you are unable to use the UK Immigration: ID Check app, you will need to attend a Visa Application Centre.

The processing times for applications vary depending on the visa you are applying for and the service available. You must apply and receive confirmation that you have been successful before you travel to the UK.



Identity verification – UK Immigration: ID Check app

To complete ID verification using the app, you must have a biometric passport and a compatible smartphone. The app is free and compatible with iPhone 7 or newer models, and Android phones that have Near Field Communication (NFC). Your phone will have NFC if it can be used to make contactless payments. If you do not own a compatible phone, you can use the app from a family or friend's mobile phone. No information is stored on the phone or app after you close it.

You can download this before you start your application. Search 'UK Immigration: ID Check' in your app store. The app will not work until you have started an application on GOV.UK.

If you start your application on GOV.UK using a compatible smartphone, you will be instructed to open the app, or download it, when it comes to the ID verification stage of your application.

If you start your application using a laptop or desktop computer, you will need to switch to a mobile phone to complete the ID verification stage via the app. You will be able to do this via a QR code or you can request a connection code. You will be instructed how and when to do this during the application process.

During the application process you will create a UK Visas and Immigration (UKVI) account which you will use when accessing your application, or once you receive a decision, to access your immigration status information.

Full guidance for the UK Immigration: ID Check app can be found on GOV.UK



Demonstrating your immigration status

If you use the UK Immigration: ID Check app you will receive written notification of your immigration status, normally via email, if your application is successful. Make sure you check your junk emails for your written notification of your immigration status. As you will have a UKVI account, you will have access to the **View and Prove Service** which allows you to view the details of your immigration status (eVisa), along with other services.

Signing into the View and Prove service allows you to:

- View your eVisa and check what rights you have in the UK, for example the right to work
- Prove your status to others, such as employers, landlords, or education providers, by generating a 'share code' which gives them time limited access to relevant data
- Update some of your personal details, for example your passport number or email address.

Identity verification – Visa Application Centre

If you do not have a biometric passport or access to a compatible smartphone, or if ID verification through the app is not yet available for the route you are applying through, you will need to attend a Visa Application Centre. You should still start your application on GOV.UK – if you are directed to attend a Visa Application Centre you will be given further information about this process and what documents you will need to provide upon your visit. You can find your nearest Visa Application Centre on GOV.UK.

Demonstrating your immigration status

If you successfully apply through a Visa Application Centre to stay in the UK for longer than 6 months, you will receive a **vignette** in your passport to travel to the UK, and then a **biometric residence permit (BRP)** once you arrive in the UK. You will still be able to use some online services to evidence your **right to work** and **right to rent** rather than having to rely on your physical documents.

A guide about viewing and proving your immigration status (eVisa) is available on GOV.UK

Travelling to the UK

When making your journey to the UK, you will need to travel with the same document you made your application with. For example, if you use your biometric passport to apply, you will need to travel using this.

When crossing the UK border, information will be checked digitally on arrival, and those with a UKVI account will not routinely need to prove their status. To prevent unnecessary delays at the border, it is important to ensure the document you travel on is registered to your account, which you can do by updating your details if you intend to travel on a different document (for example a new passport). Further information on [viewing and proving your immigration status](#) is available on GOV.UK

Tops tips for using the UK Immigration: ID Check app

- Start your application on GOV.UK before using the app. You will be told when you need to connect to the app
- If you are applying using a compatible smartphone, you will be directed to download the app, or if you have downloaded it already, the app will open
- If you are applying on a computer or laptop, you will need to download and open the app and use the smartphone's camera to scan a QR code
- Make sure you have a steady internet connection, via 3G, 4G or WIFI
- Make sure you remove any cases from your passport and your phone
- You will need to take a picture of the photo page of your passport. You can hold your passport like a book – this makes it easier to take the image and help avoid glare. It's important that you get the strip of numbers and letters at the bottom of the page in to your picture
- To scan the chip in your passport, don't hover your device over your passport – place it directly on top
- The chip is located in different places in different documents. You might need to move your device around slowly until you receive the 'accessing chip' message. This might take you a couple of goes.

You can find further information and [apply for UK work and study visas online at GOV.UK](#)

If you are experiencing problems with the application process, you can find relevant contact details on GOV.UK.
